

Anti-Integrin subunit beta 4 Recombinant Rabbit Monoclonal Antibody



Catalog #: 2150

Aliases

ITGB4; Integrin Subunit Beta 4; CD104; Integrin Beta-4; CD104 Antigen; GP150; Integrin, Beta 4; JEB5A; JEB5B

Background

Gene Name: ITGB4

NCBI Gene Entry: [3691](#)

UniProt Entry: [P16144](#)

Application Information

Molecular Weight: Predicted, 202 kDa; observed, 210 kDa

Clonality: Rabbit monoclonal antibody

Clone ID: 23GB6240

Species Reactivity: Human

Applications Tested: Western blotting (WB), immunocytochemistry (IC)

Immunogen

A synthesized peptide derived from human Integrin beta 4

Isotype

Rabbit IgG

Storage Buffer

Supplied in PBS (pH 7.4) containing 50% glycerol, and 0.02% sodium azide.

Storage

Store at -20 °C for one year.

Recommended Dilutions

Western Blotting (WB): 1:1,000-1:5,000

Immunocytochemistry (IC): 1:100-1:1,000

Note: This product is for research use only.

Validation Data

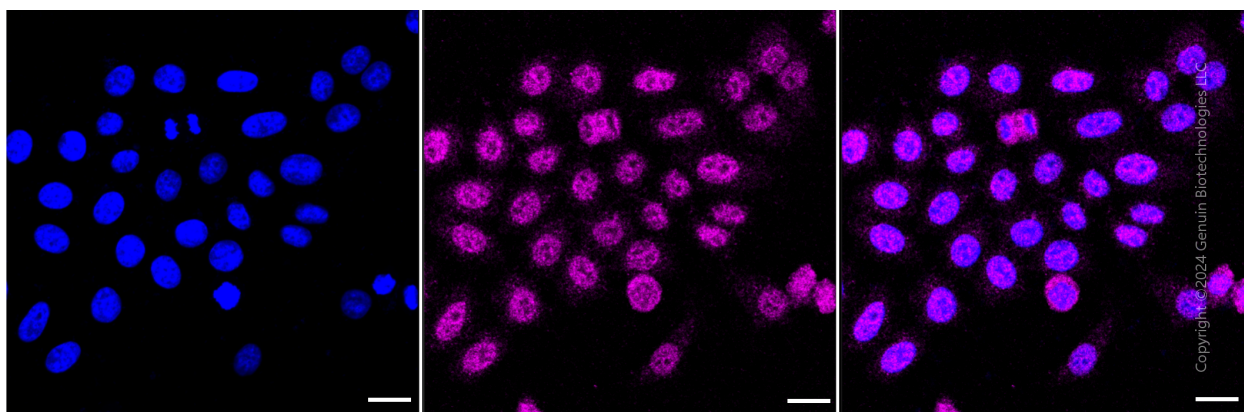
SUPPORT

SUPPORT@GENUINBIOTECH.COM
TEL: +1-540-855-7041

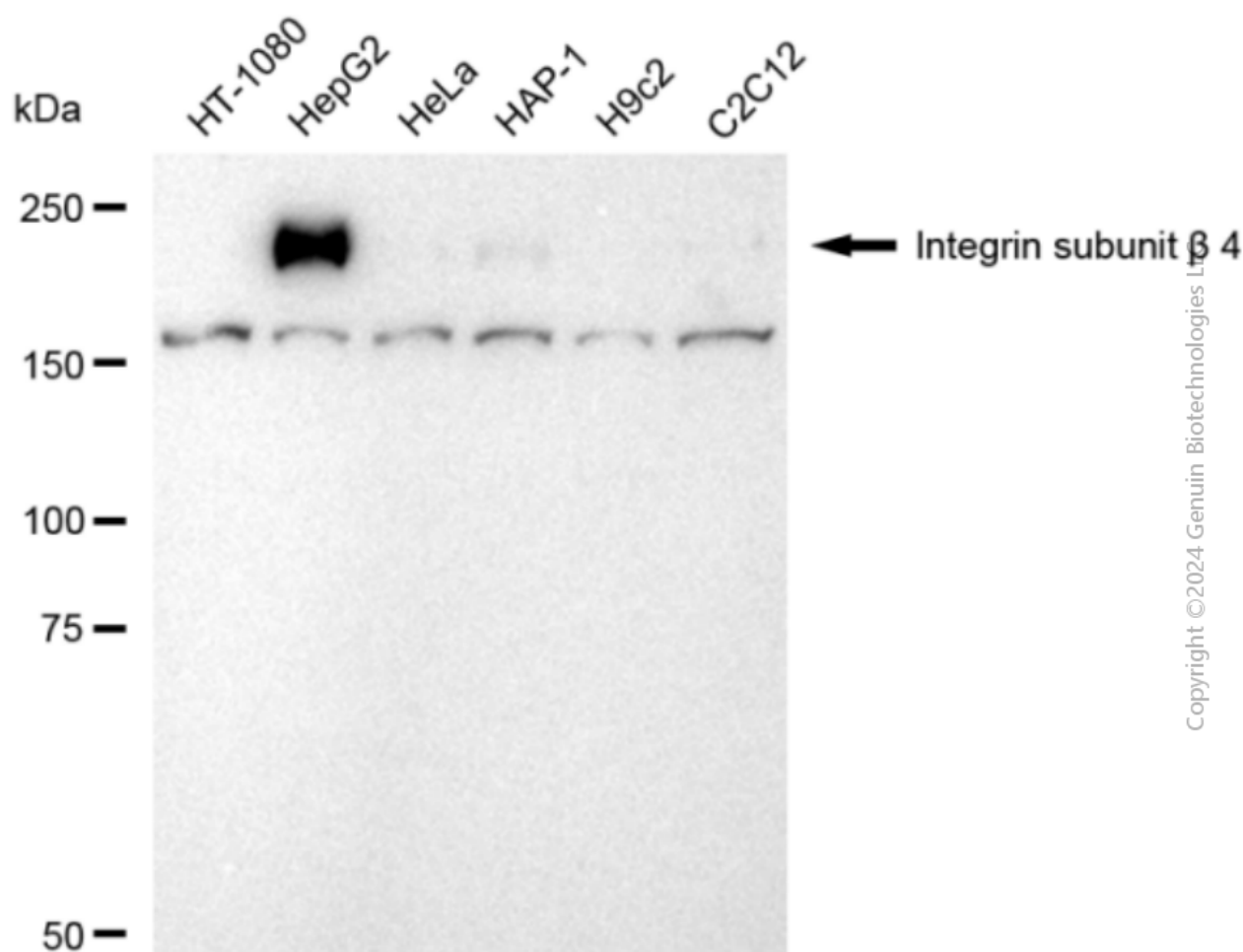
ORDERS

SALES@GENUINBIOTECH.COM
FAX: +1-540-855-7041

WWW.GENUINBIOTECH.COM



Immunocytochemical staining of HepG2 cells with anti-Integrin subunit beta 4 antibody (Cat#2150, 1:1,000). Nuclei were stained blue with DAPI; Integrin subunit beta 4 was stained magenta with Alexa Fluor® 647. Images were taken using Leica stellaris 5. Protein abundance based on laser Intensity and smart gain: Medium. Scale bar: 20 μ m.



Western blotting analysis using anti-Integrin subunit beta 4 antibody (Cat#2150). Total cell lysates (30 μ g) from various cell lines were loaded and separated by SDS-PAGE. The blot was incubated

Anti-Integrin subunit beta 4 Recombinant Rabbit Monoclonal Antibody

PAGE 3

with anti-Integrin subunit beta 4 antibody (Cat#2150, 1:5,000) and HRP-conjugated goat anti-rabbit secondary antibody (Cat#201, 1:20,000) respectively. Image was developed using FeQ™ ECL Substrate Kit (Cat#226).

SUPPORT

SUPPORT@GENUINBIOTECH.COM
TEL: +1-540-855-7041

ORDERS

SALES@GENUINBIOTECH.COM
FAX: +1-540-855-7041

WWW.GENUINBIOTECH.COM