

# Anti-G protein-coupled receptor kinase 3 Recombinant Rabbit Monoclonal Antibody



**Catalog #: 2162**

## Aliases

GRK3; G Protein-Coupled Receptor Kinase 3; BARK2; ADRBK2; Adrenergic, Beta, Receptor Kinase 2; Beta-Adrenergic Receptor Kinase 2; EC 2.7.11.15; Beta-ARK-2; G-Protein-Coupled Receptor Kinase; EC 2.7.11

## Background

Gene Name: GRK3

NCBI Gene Entry: [157](#)

UniProt Entry: [P35626](#)

## Application Information

Molecular Weight: Predicted, 80 kDa; observed, 80 kDa

Clonality: Rabbit monoclonal antibody

Clone ID: 23GB6300

Species Reactivity: Human, mouse, rat

Applications Tested: Western blotting (WB), flow cytometry (FCM), immunocytochemistry (IC)

## Immunogen

A synthesized peptide derived from human GRK3

## Isotype

Rabbit IgG

## Storage Buffer

Supplied in PBS (pH 7.4) containing 50% glycerol, and 0.02% sodium azide.

## Storage

Store at -20 °C for one year.

## Recommended Dilutions

Western Blotting (WB): 1:1,000-1:5,000

Flow Cytometry (FCM): 1:2,000

Immunocytochemistry (IC): 1:100-1:1,000

**Note:** This product is for research use only.

---

### SUPPORT

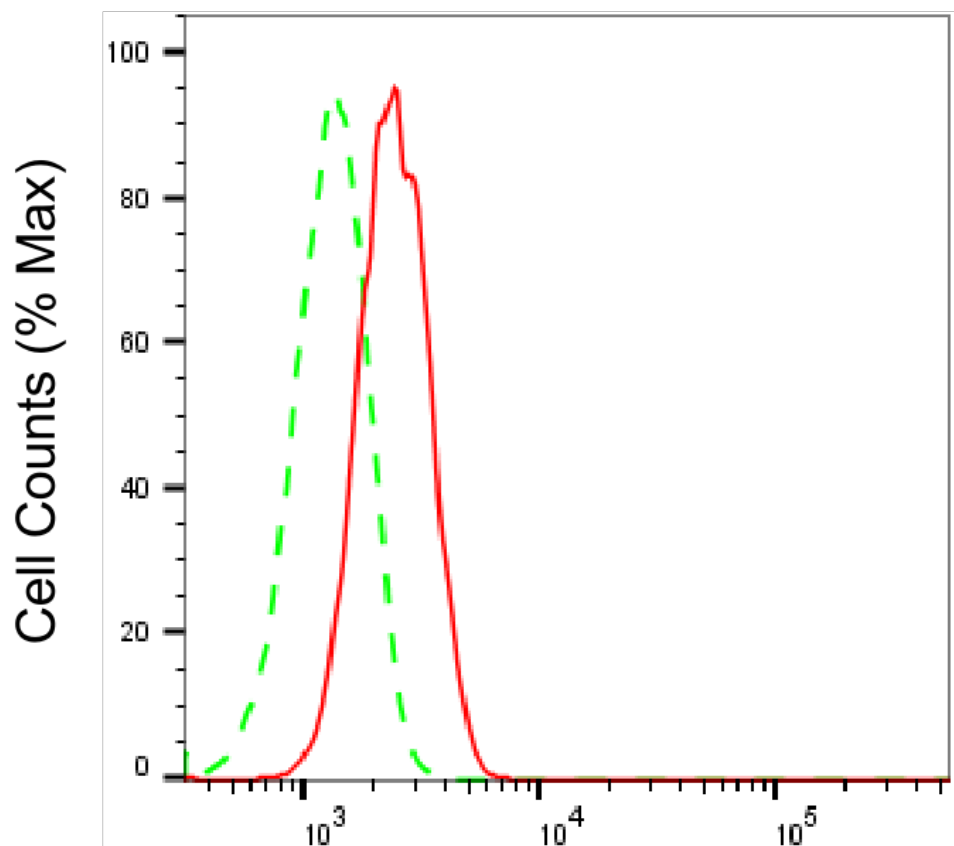
SUPPORT@GENUINBIOTECH.COM  
TEL: +1-540-855-7041

### ORDERS

SALES@GENUINBIOTECH.COM  
FAX: +1-540-855-7041

[WWW.GENUINBIOTECH.COM](http://WWW.GENUINBIOTECH.COM)

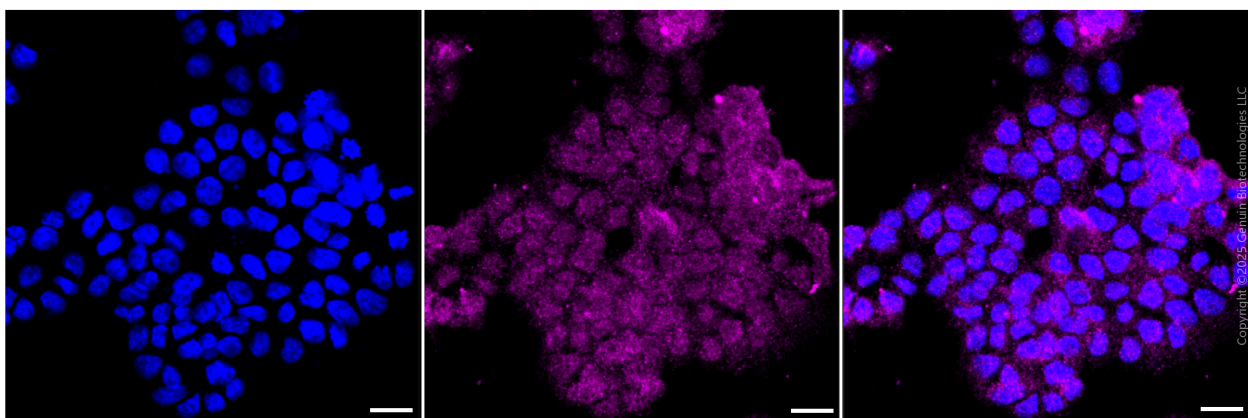
**Validation Data**



Copyright ©2025 Genuin Biotechnologies LLC

**G protein-coupled receptor kinase 3-Alexa Fluor® 647**

Flow cytometric analysis of G protein-coupled receptor kinase 3 expression in HAP-1 cells using anti-G protein-coupled receptor kinase 3 antibody (Cat#2162, 1:2,000). Green, isotype control; red, G protein-coupled receptor kinase 3.



Copyright ©2025 Genuin Biotechnologies LLC

Immunocytochemical staining of HAP1 cells with anti-G protein-coupled receptor kinase 3 antibody (Cat #2162, 1:1,000) . Nuclei were stained blue with DAPI; G protein-coupled receptor kinase 3 was stained magenta with Alexa Fluor® 647. Images were taken using Leica stellaris 5.

**SUPPORT**

SUPPORT@GENUINBIOTECH.COM  
TEL: +1-540-855-7041

**ORDERS**

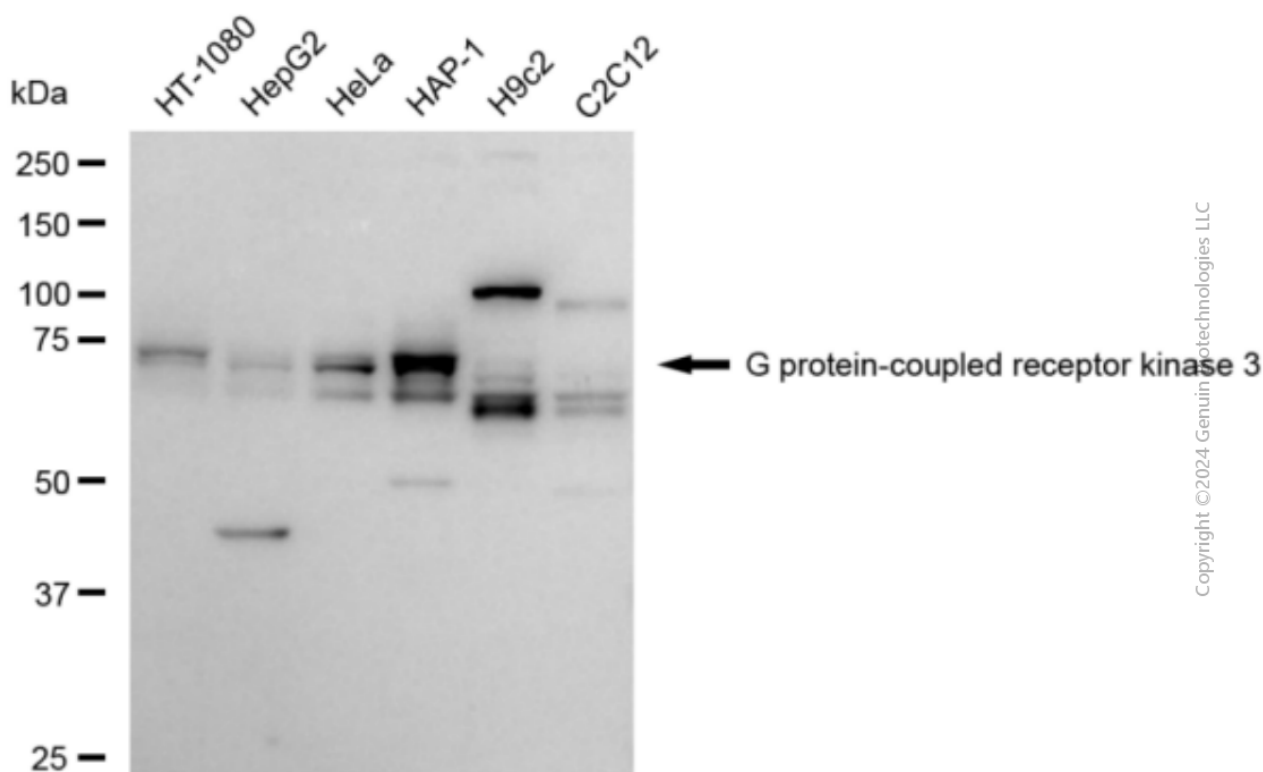
SALES@GENUINBIOTECH.COM  
FAX: +1-540-855-7041

**WWW.GENUINBIOTECH.COM**

## Anti-G protein-coupled receptor kinase 3 Recombinant Rabbit Monoclonal Antibody

PAGE 3

Protein abundance based on laser Intensity and smart gain: Medium. Scale bar, 20  $\mu$ m.



Western blotting analysis using anti-G protein-coupled receptor kinase 3 antibody (Cat#2162). Total cell lysates (30  $\mu$ g) from various cell lines were loaded and separated by SDS-PAGE. The blot was incubated with anti-G protein-coupled receptor kinase 3 antibody (Cat#2162, 1:5,000) and HRP-conjugated goat anti-rabbit secondary antibody (Cat#201, 1:20,000) respectively. Image was developed using FeQ™ ECL Substrate Kit (Cat#226).

### SUPPORT

SUPPORT@GENUINBIOTECH.COM  
TEL: +1-540-855-7041

### ORDERS

SALES@GENUINBIOTECH.COM  
FAX: +1-540-855-7041

WWW.GENUINBIOTECH.COM