

# Anti-GTF2E1 Recombinant Rabbit Monoclonal Antibody



**Catalog #: 2164**

## Aliases

GTF2E1; General Transcription Factor IIE Subunit 1; TFIIE-A; FE; General Transcription Factor IIE, Polypeptide 1, Alpha 56kDa; Transcription Initiation Factor IIE Subunit Alpha; General Transcription Factor IIE 56 KDa Subunit; TFIIE Alpha Subunit; TFIIE-Alpha; TF2E1; General Transcription Factor IIE, Polypeptide 1 (Alpha Subunit, 56kD)

## Background

Gene Name: GTF2E1

NCBI Gene Entry: [2960](#)

UniProt Entry: [P29083](#)

## Application Information

Molecular Weight: Predicted, 49 kDa; observed, 60 kDa

Clonality: Rabbit monoclonal antibody

Clone ID: 23GB6310

Species Reactivity: Human, mouse, rat

Applications Tested: Western blotting (WB), flow cytometry (FCM), immunocytochemistry (IC)

## Immunogen

A synthesized peptide derived from human TFIIE alpha

## Isotype

Rabbit IgG

## Storage Buffer

Supplied in PBS (pH 7.4) containing 50% glycerol, and 0.02% sodium azide.

## Storage

Store at -20 °C for one year.

## Recommended Dilutions

Western Blotting (WB): 1:1,000-1:5,000

Flow Cytometry (FCM): 1:2,000

Immunocytochemistry (IC): 1:100-1:1,000

---

### SUPPORT

SUPPORT@GENUINBIOTECH.COM  
TEL: +1-540-855-7041

### ORDERS

SALES@GENUINBIOTECH.COM  
FAX: +1-540-855-7041

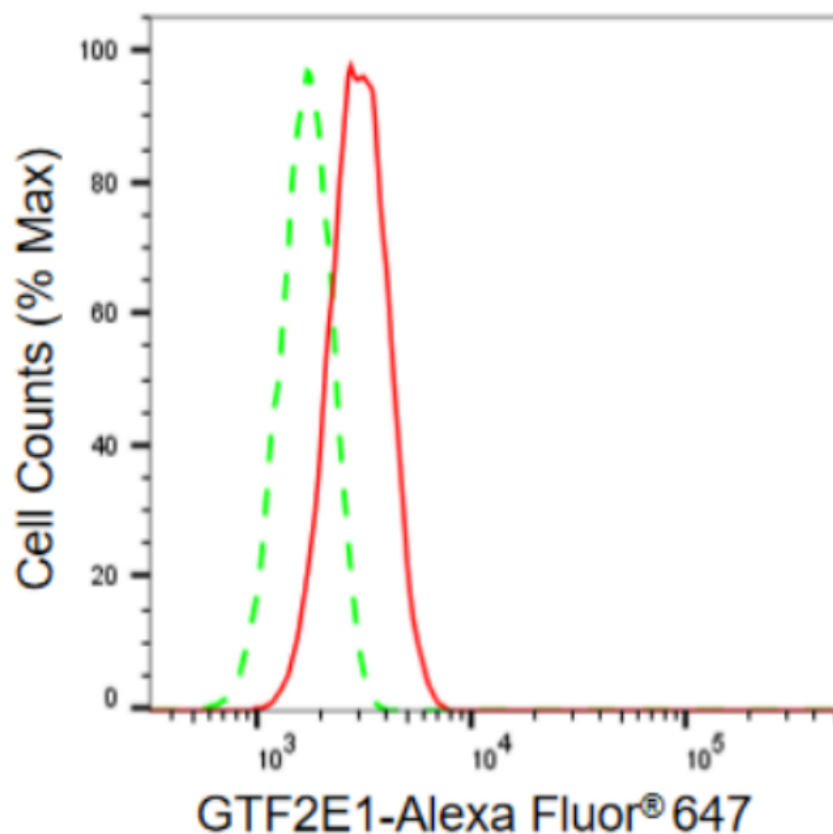
[WWW.GENUINBIOTECH.COM](http://WWW.GENUINBIOTECH.COM)

# Anti-GTF2E1 Recombinant Rabbit Monoclonal Antibody

PAGE 2

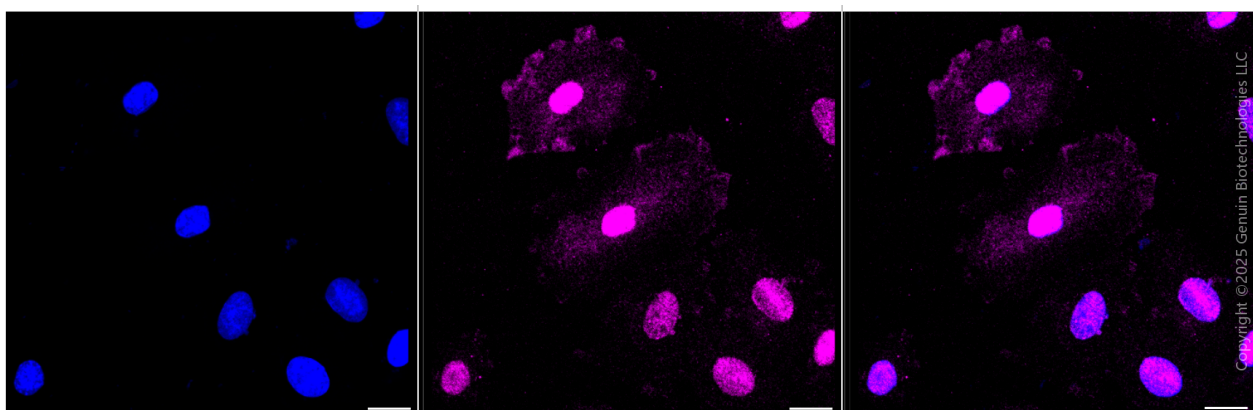
**Note:** This product is for research use only.

## Validation Data



Copyright ©2024 Genuin Biotechnologies LLC

Flow cytometric analysis of GTF2E1 expression in H9c2 cells using GTF2E1 antibody (Cat#2164, 1:2,000). Green, isotype control; red, GTF2E1.



Copyright ©2025 Genuin Biotechnologies LLC

Immunocytochemical staining of H9C2 cells with anti-GTF2E1 antibody (Cat#2164, 1:1,000). Nuclei were stained blue with DAPI; GTF2E1 was stained magenta with Alexa Fluor® 647. Images were taken using Leica stellaris 5. Protein abundance based on laser Intensity and smart

### SUPPORT

SUPPORT@GENUINBIOTECH.COM  
TEL: +1-540-855-7041

### ORDERS

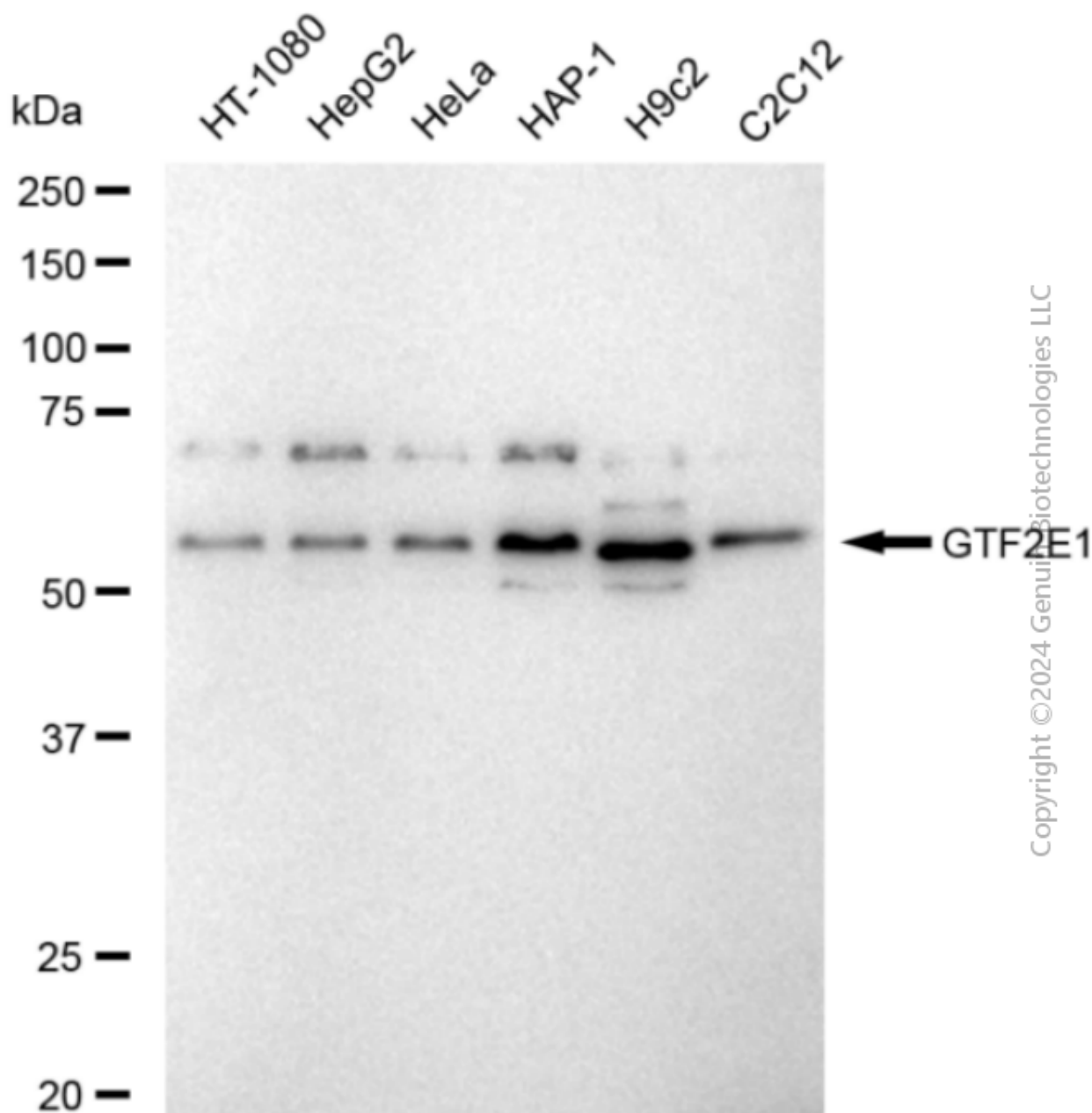
SALES@GENUINBIOTECH.COM  
FAX: +1-540-855-7041

[WWW.GENUINBIOTECH.COM](http://WWW.GENUINBIOTECH.COM)

## Anti-GTF2E1 Recombinant Rabbit Monoclonal Antibody

PAGE 3

gain: Medium. Scale bar, 20  $\mu$ m.



Copyright © 2024 Genuin Biotechnologies LLC

Western blotting analysis using anti-GTF2E1 antibody (Cat#2164). Total cell lysates (30  $\mu$ g) from various cell lines were loaded and separated by SDS-PAGE. The blot was incubated with anti-GTF2E1 antibody (Cat#2164, 1:5,000) and HRP-conjugated goat anti-rabbit secondary antibody (Cat#201, 1:20,000) respectively. Image was developed using FeQ™ ECL Substrate Kit (Cat#226).

### SUPPORT

SUPPORT@GENUINBIOTECH.COM  
TEL: +1-540-855-7041

### ORDERS

SALES@GENUINBIOTECH.COM  
FAX: +1-540-855-7041

[WWW.GENUINBIOTECH.COM](http://WWW.GENUINBIOTECH.COM)