

Anti-Histone H4 (mono methyl K20) Recombinant Rabbit Monoclonal Antibody



Catalog #: 2166

Aliases

H4C3; H4 Clustered Histone 3; H4/G; DJ221C16.1; HIST1H4C; H4FG; Histone Cluster 1 H4 Family Member C; H4 Histone Family, Member G; Histone Cluster 1, H4c; Histone 1, H4c; Histone H4; H4-16; TEBIVANED1; TEVANED1; HIST1H4A; HIST1H4B; HIST1H4D; HIST1H4E; HIST1H4F; HIST1H4H; HIST1H4I; HIST1H4J; HIST1H4K; HIST1H4L; HIST2H4A; HIST2H4B; HIST2H4; HIST4H4; H4C11; H4C12; H4C13; H4C14; H4C15; H4C16; H4C1; H4C2; H4C4; H4C5; H4C6; H4C8; H4C9; H4/A; H4FA; H4/I; H4FI; H4/B; H4FB; H4/J; H4FJ; H4/C; H4FC; H4/H; H4FH; H4/M; H4FM; H4/E; H4FE; H4/D; H4FD; H4/K; H4FK; H4/N; H4F2; H4FN; H4/O; H4FO

Background

Gene Name: H4C3

NCBI Gene Entry: [8364](#)

UniProt Entry: [P62805](#)

Application Information

Molecular Weight: Predicted, 11 kDa; observed, 11 kDa

Clonality: Rabbit monoclonal antibody

Clone ID: 23GB6320

Species Reactivity: Human, mouse, rat

Applications Tested: Western blotting (WB), flow cytometry (FCM), immunocytochemistry (IC)

Immunogen

A synthesized peptide derived from human Histone H4 (mono methyl K20)

Isotype

Rabbit IgG

Storage Buffer

Supplied in PBS (pH 7.4) containing 50% glycerol, and 0.02% sodium azide.

Storage

Store at -20 °C for one year.

Recommended Dilutions

Western Blotting (WB): 1:1,000-1:5,000

SUPPORT

SUPPORT@GENUINBIOTECH.COM
TEL: +1-540-855-7041

ORDERS

SALES@GENUINBIOTECH.COM
FAX: +1-540-855-7041

WWW.GENUINBIOTECH.COM

Anti-Histone H4 (mono methyl K20) Recombinant Rabbit Monoclonal Antibody

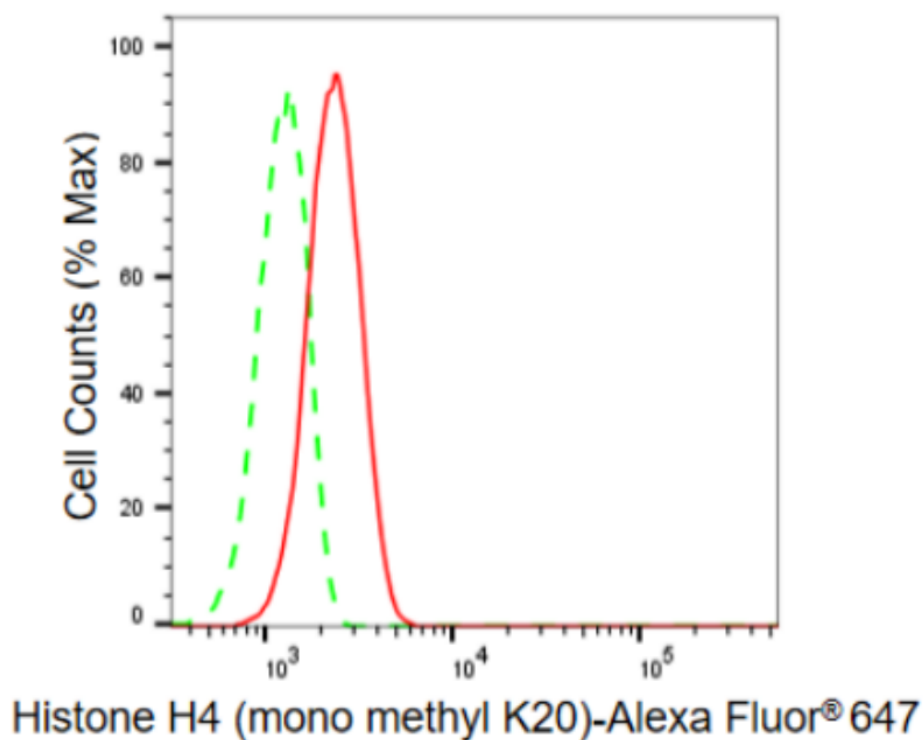
PAGE 2

Flow Cytometry (FCM): 1:2,000

Immunocytochemistry (IC): 1:100-1:1,000

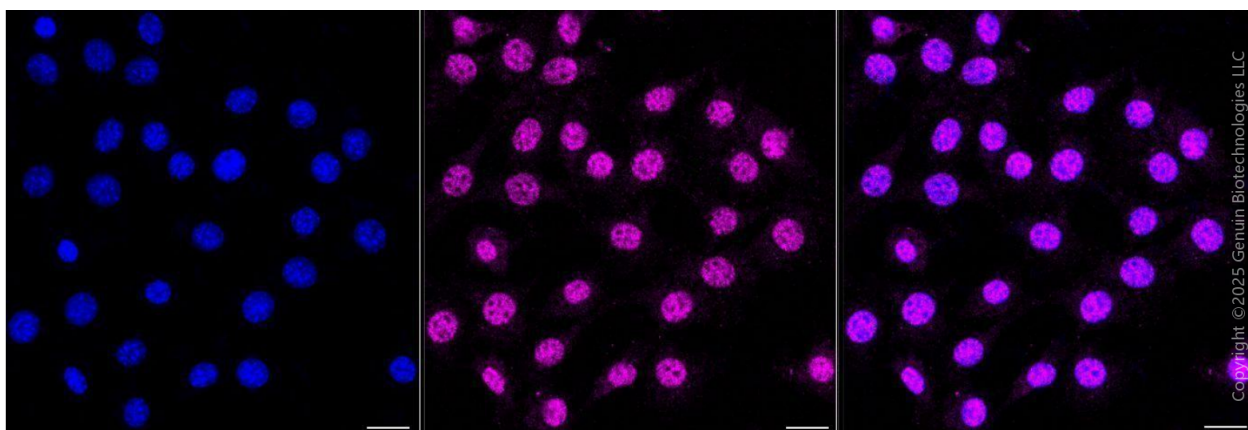
Note: This product is for research use only.

Validation Data



Copyright ©2024 Genuin Biotechnologies LLC

Flow cytometric analysis of Histone H4 (mono methyl K20) expression in C2C12 cells using Histone H4 (mono methyl K20) antibody (Cat#2166, 1:2,000). Green, isotype control; red, Histone H4 (mono methyl K20).



SUPPORT

SUPPORT@GENUINBIOTECH.COM
TEL: +1-540-855-7041

ORDERS

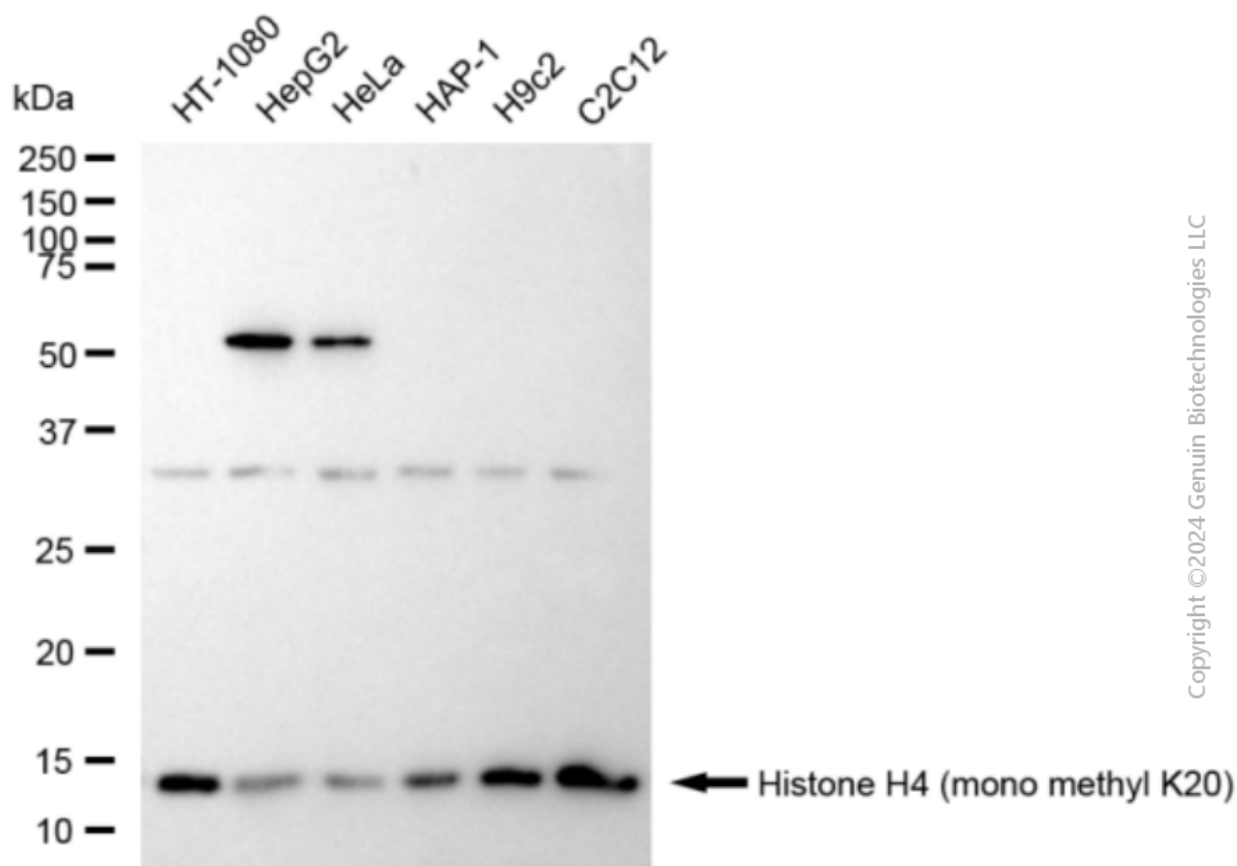
SALES@GENUINBIOTECH.COM
FAX: +1-540-855-7041

WWW.GENUINBIOTECH.COM

Anti-Histone H4 (mono methyl K20) Recombinant Rabbit Monoclonal Antibody

PAGE 3

Immunocytochemical staining of C2C12 cells with anti-Histone H4 (mono methyl K20) antibody (Cat#2166, 1:1,000). Nuclei were stained blue with DAPI; Histone H4 (mono methyl K20) was stained magenta with Alexa Fluor® 647. Images were taken using Leica stellaris 5. Protein abundance based on laser Intensity and smart gain: Medium. Scale bar, 20 μ m.



Western blotting analysis using anti-Histone H4 (mono methyl K20) antibody (Cat#2166). Total cell lysates (5 μ g) from various cell lines were loaded and separated by SDS-PAGE. The blot was incubated with anti-Histone H4 (mono methyl K20) antibody (Cat#2166, 1:5,000) and HRP-conjugated goat anti-rabbit secondary antibody (Cat#201, 1:20,000) respectively. Image was developed using FeQ™ ECL Substrate Kit (Cat#226).

SUPPORT

SUPPORT@GENUINBIOTECH.COM
TEL: +1-540-855-7041

ORDERS

SALES@GENUINBIOTECH.COM
FAX: +1-540-855-7041

WWW.GENUINBIOTECH.COM