

Anti-INA Recombinant Rabbit Monoclonal Antibody



Catalog #: 2167

Aliases

INA; Internexin Neuronal Intermediate Filament Protein Alpha; NF-66; NEF5; 66 KDa Neurofilament Protein; Alpha-Internexin; Alpha-Inx; Internexin Neuronal Intermediate Filament Protein, Alpha; Neurofilament-66, Tax-Binding Protein; Neurofilament 5 (66kD); Neurofilament-66; Neurofilament 5; TXBP-1; NF66

Background

Gene Name: INA

NCBI Gene Entry: [9118](#)

UniProt Entry: [Q16352](#)

Application Information

Molecular Weight: Predicted, 55 kDa; observed, 60 kDa

Clonality: Rabbit monoclonal antibody

Clone ID: 23GB6325

Species Reactivity: Human, mouse, rat

Applications Tested: Western blotting (WB), immunocytochemistry (IC)

Immunogen

A synthesized peptide derived from human alpha Internexin

Isotype

Rabbit IgG

Storage Buffer

Supplied in PBS (pH 7.4) containing 50% glycerol, and 0.02% sodium azide.

Storage

Store at -20 °C for one year.

Recommended Dilutions

Western Blotting (WB): 1:1,000-1:5,000

Immunocytochemistry (IC): 1:100-1:1,000

Note: This product is for research use only.

SUPPORT

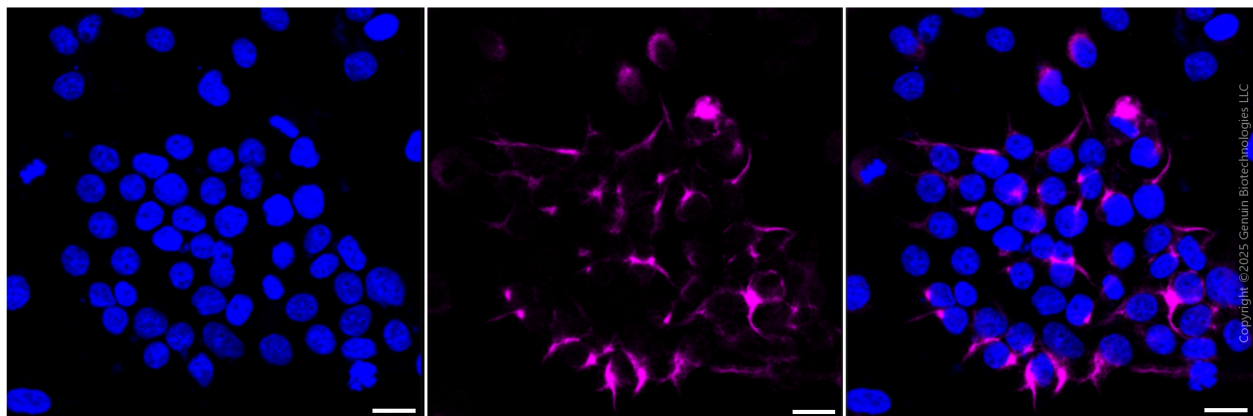
SUPPORT@GENUINBIOTECH.COM
TEL: +1-540-855-7041

ORDERS

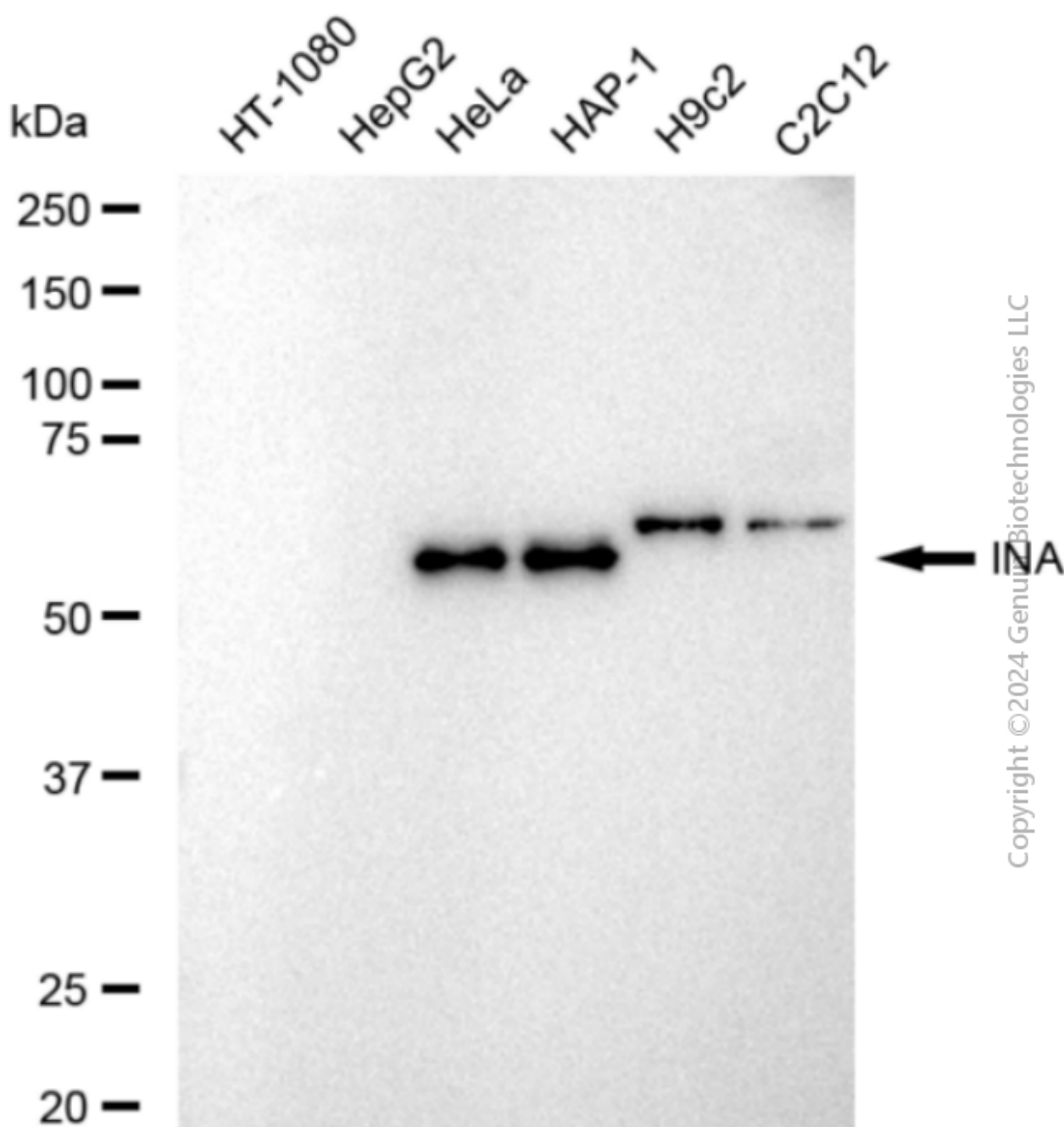
SALES@GENUINBIOTECH.COM
FAX: +1-540-855-7041

WWW.GENUINBIOTECH.COM

Validation Data



Immunocytochemical staining of HeLa cells with anti-INA antibody (Cat#2167, 1:1,000) . Nuclei were stained blue with DAPI; INA was stained magenta with Alexa Fluor® 647. Images were taken using Leica stellaris 5. Protein abundance based on laser Intensity and smart gain: High. Scale bar, 20 μ m.



Western blotting analysis using anti-INA antibody (Cat#2167). Total cell lysates (30 μ g) from various cell lines were loaded and separated by SDS-PAGE. The blot was incubated with anti-INA antibody (Cat#2167, 1:5,000) and HRP-conjugated goat anti-rabbit secondary antibody (Cat#201, 1:20,000) respectively. Image was developed using FeQ™ ECL Substrate Kit (Cat#226).