

# Anti-Histone H2B (acetyl K16) Recombinant Rabbit Monoclonal Antibody



**Catalog #: 2170**

## Aliases

H2BC21; H2B Clustered Histone 21; H2B-GL105; HIST2H2BE; H2B/Q; H2B.1; H2BFQ; H2BE; Histone Cluster 2 H2B Family Member E; H2B Histone Family, Member Q; Histone Cluster 2, H2be; Histone H2B Type 2-E; Histone H2B-GL105; Histone 2, H2be; Histone H2B.Q; H2B; H2B-Clustered Histone 21; H2BGL105; GL105; H2BQ

## Background

Gene Name: H2BC21

NCBI Gene Entry: [8349](#)

UniProt Entry: [Q16778](#)

## Application Information

Molecular Weight: Predicted, 14 kDa; observed, 17 kDa

Clonality: Rabbit monoclonal antibody

Clone ID: 23GB6340

Species Reactivity: Human, mouse

Applications Tested: Western blotting (WB), flow cytometry (FCM), immunocytochemistry (IC)

## Immunogen

A synthesized peptide derived from human Histone H2B (acetyl K16)

## Isotype

Rabbit IgG

## Storage Buffer

Supplied in PBS (pH 7.4) containing 50% glycerol, and 0.02% sodium azide.

## Storage

Store at -20 °C for one year.

## Recommended Dilutions

Western Blotting (WB): 1:1,000-1:5,000

Flow Cytometry (FCM): 1:2,000

Immunocytochemistry (IC): 1:100-1:1,000

---

### SUPPORT

SUPPORT@GENUINBIOTECH.COM  
TEL: +1-540-855-7041

### ORDERS

SALES@GENUINBIOTECH.COM  
FAX: +1-540-855-7041

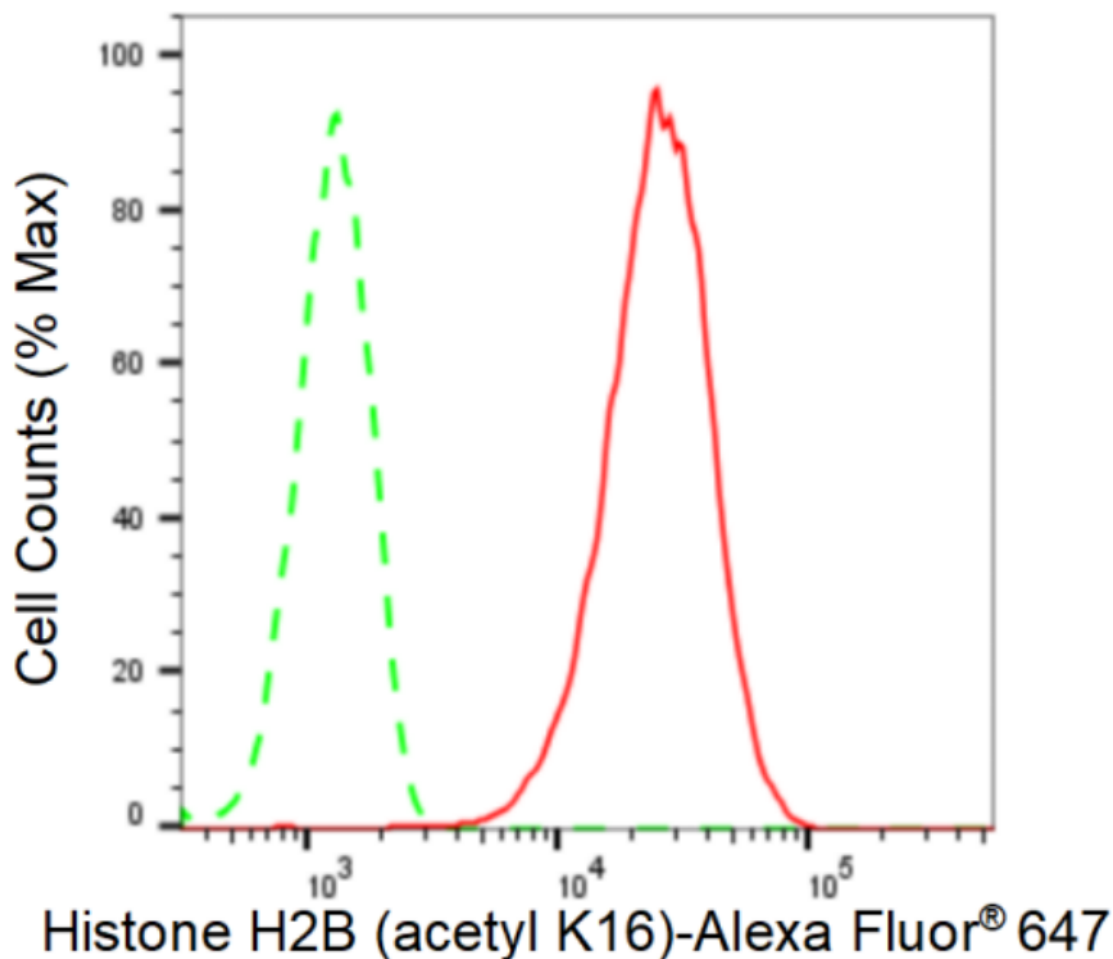
[WWW.GENUINBIOTECH.COM](http://WWW.GENUINBIOTECH.COM)

# Anti-Histone H2B (acetyl K16) Recombinant Rabbit Monoclonal Antibody

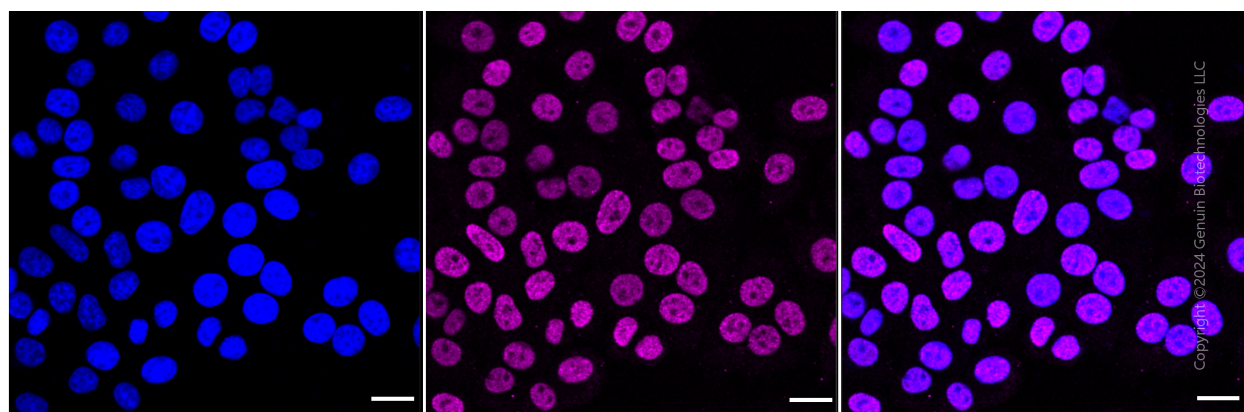
PAGE 2

**Note:** This product is for research use only.

## Validation Data



Flow cytometric analysis of Histone H2B (acetyl K16) expression in HepG2 cells using anti-Histone H2B (acetyl K16) antibody (Cat#2170, 1:2,000). Green, isotype control; red, Histone H2B (acetyl K16).



### SUPPORT

SUPPORT@GENUINBIOTECH.COM  
TEL: +1-540-855-7041

### ORDERS

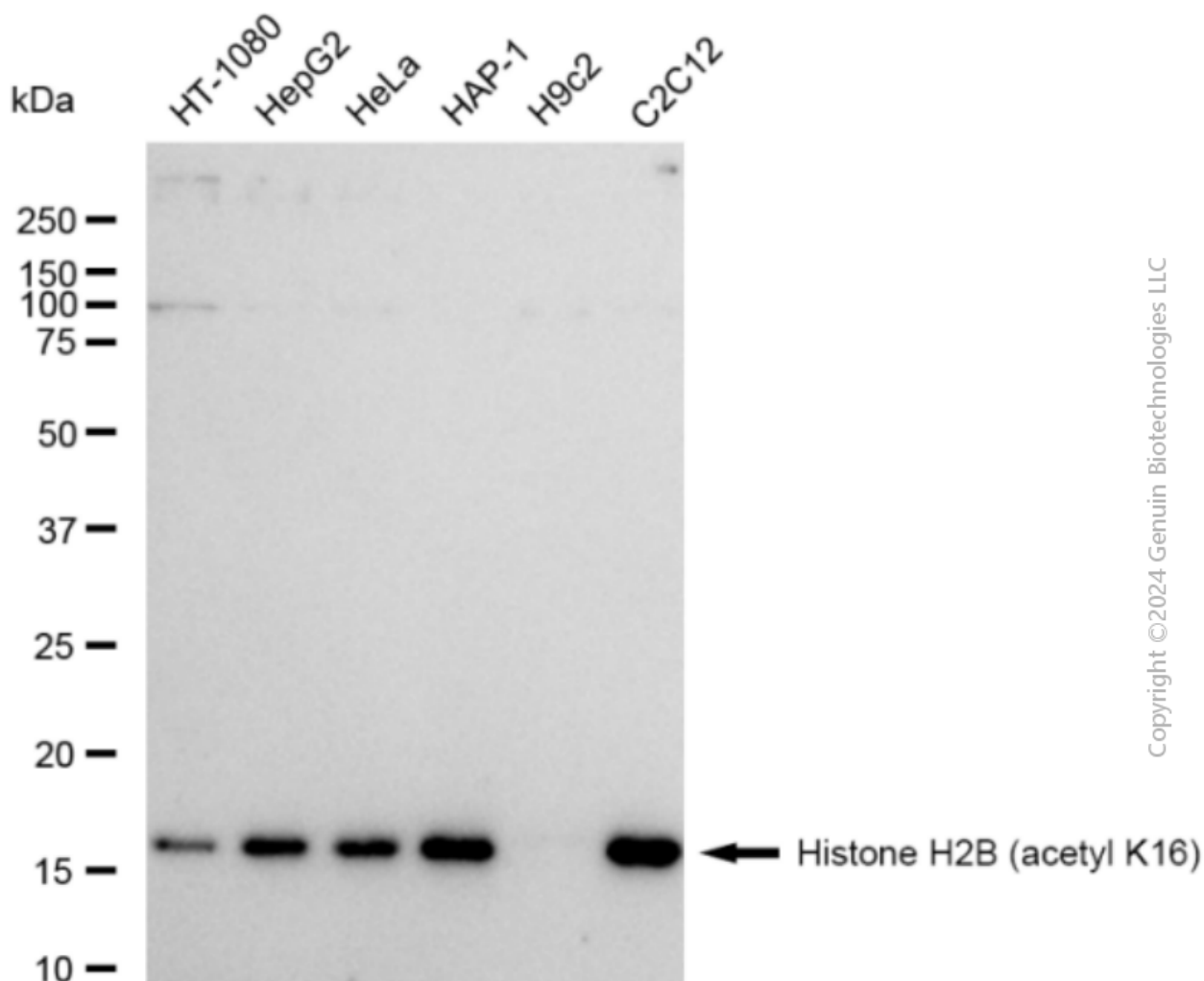
SALES@GENUINBIOTECH.COM  
FAX: +1-540-855-7041

WWW.GENUINBIOTECH.COM

## Anti-Histone H2B (acetyl K16) Recombinant Rabbit Monoclonal Antibody

PAGE 3

Immunocytochemical staining of HepG2 cells with anti-Histone H2B (acetyl K16) antibody (Cat#2170, 1:1,000). Nuclei were stained blue with DAPI; Histone H2B (acetyl K16) was stained magenta with Alexa Fluor® 647. Images were taken using Leica stellaris 5. Protein abundance based on laser Intensity and smart gain: Medium. Scale bar: 20  $\mu$ m.



Western blotting analysis using anti-Histone H2B (acetyl K16) antibody (Cat#2170). Total cell lysates (5  $\mu$ g) from various cell lines were loaded and separated by SDS-PAGE. The blot was incubated with anti-Histone H2B (acetyl K16) antibody (Cat#2170, 1:5,000) and HRP-conjugated goat anti-rabbit secondary antibody (Cat#201, 1:20,000) respectively. Image was developed using FeQ™ ECL Substrate Kit (Cat#226).

### SUPPORT

SUPPORT@GENUINBIOTECH.COM  
TEL: +1-540-855-7041

### ORDERS

SALES@GENUINBIOTECH.COM  
FAX: +1-540-855-7041

WWW.GENUINBIOTECH.COM