

Anti-Histone H1.2 Recombinant Rabbit Monoclonal Antibody



Catalog #: 2174

Aliases

H1-2; H1.2 Linker Histone, Cluster Member 2; HIST1H1C; H1.2; H1F2; Histone Cluster 1 H1 Family Member C; H1 Histone Family, Member 2; Histone Cluster 1, H1c; Histone 1, H1c; Histone H1s-1; Histone H1.2; Histone H1c; Histone H1d; H1s-1; H1C; H1S-1; H1c

Background

Gene Name: H1-2

NCBI Gene Entry: [3006](#)

UniProt Entry: [P16403](#)

Application Information

Molecular Weight: Predicted, 21 kDa; observed, 29 kDa

Clonality: Rabbit monoclonal antibody

Clone ID: 23GB6355

Species Reactivity: Human, mouse, rat

Applications Tested: Western blotting (WB), flow cytometry (FCM), immunocytochemistry (IC)

Immunogen

A synthesized peptide derived from human Histone H1.2

Isotype

Rabbit IgG

Storage Buffer

Supplied in PBS (pH 7.4) containing 50% glycerol, and 0.02% sodium azide.

Storage

Store at -20 °C for one year.

Recommended Dilutions

Western Blotting (WB): 1:1,000-1:5,000

Flow Cytometry (FCM): 1:2,000

Immunocytochemistry (IC): 1:100-1:1,000

Note: This product is for research use only.

SUPPORT

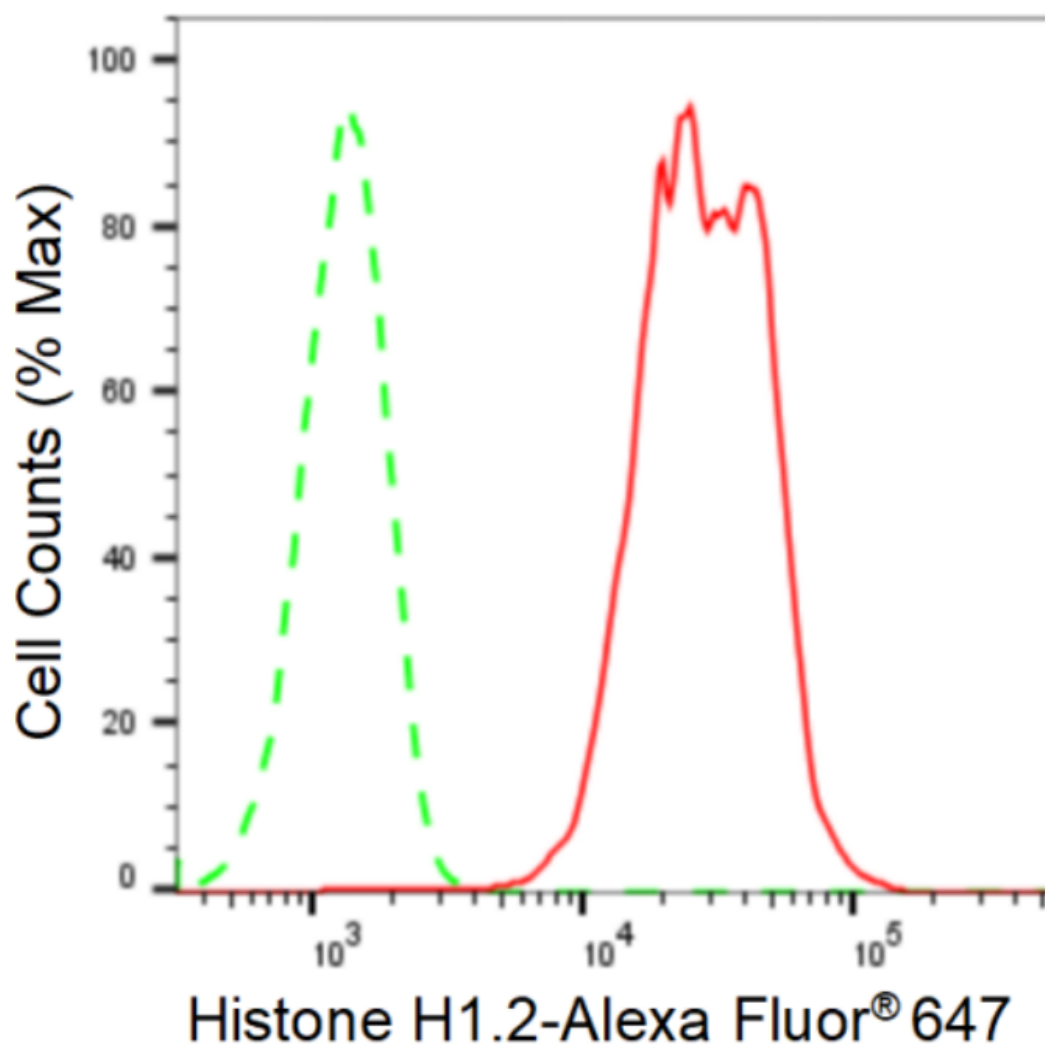
SUPPORT@GENUINBIOTECH.COM
TEL: +1-540-855-7041

ORDERS

SALES@GENUINBIOTECH.COM
FAX: +1-540-855-7041

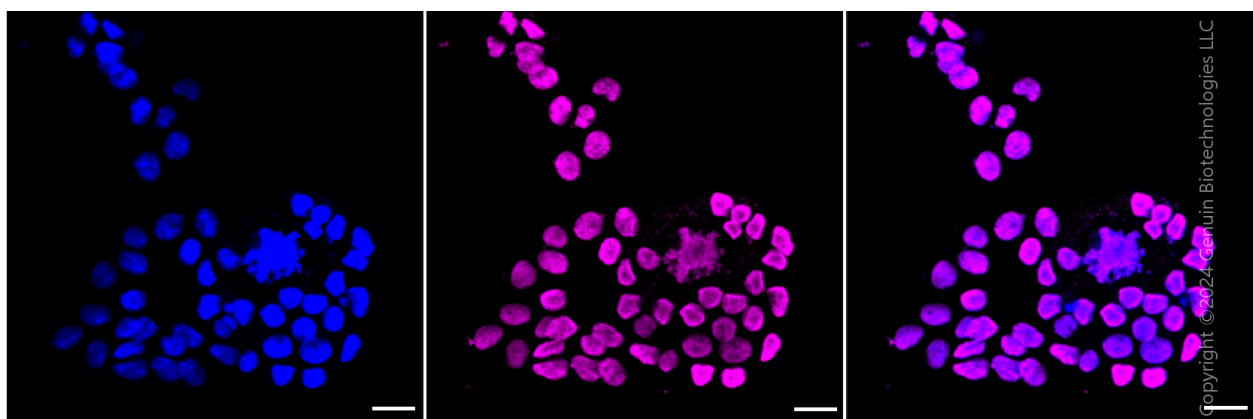
WWW.GENUINBIOTECH.COM

Validation Data



Copyright ©2024 Genuin Biotechnologies LLC

Flow cytometric analysis of Histone H1.2 expression in HAP-1 cells using anti-Histone H1.2 antibody (Cat#2174, 1:2,000). Green, isotype control; red, Histone H1.2.



Copyright ©2024 Genuin Biotechnologies LLC

SUPPORT

SUPPORT@GENUINBIOTECH.COM
TEL: +1-540-855-7041

ORDERS

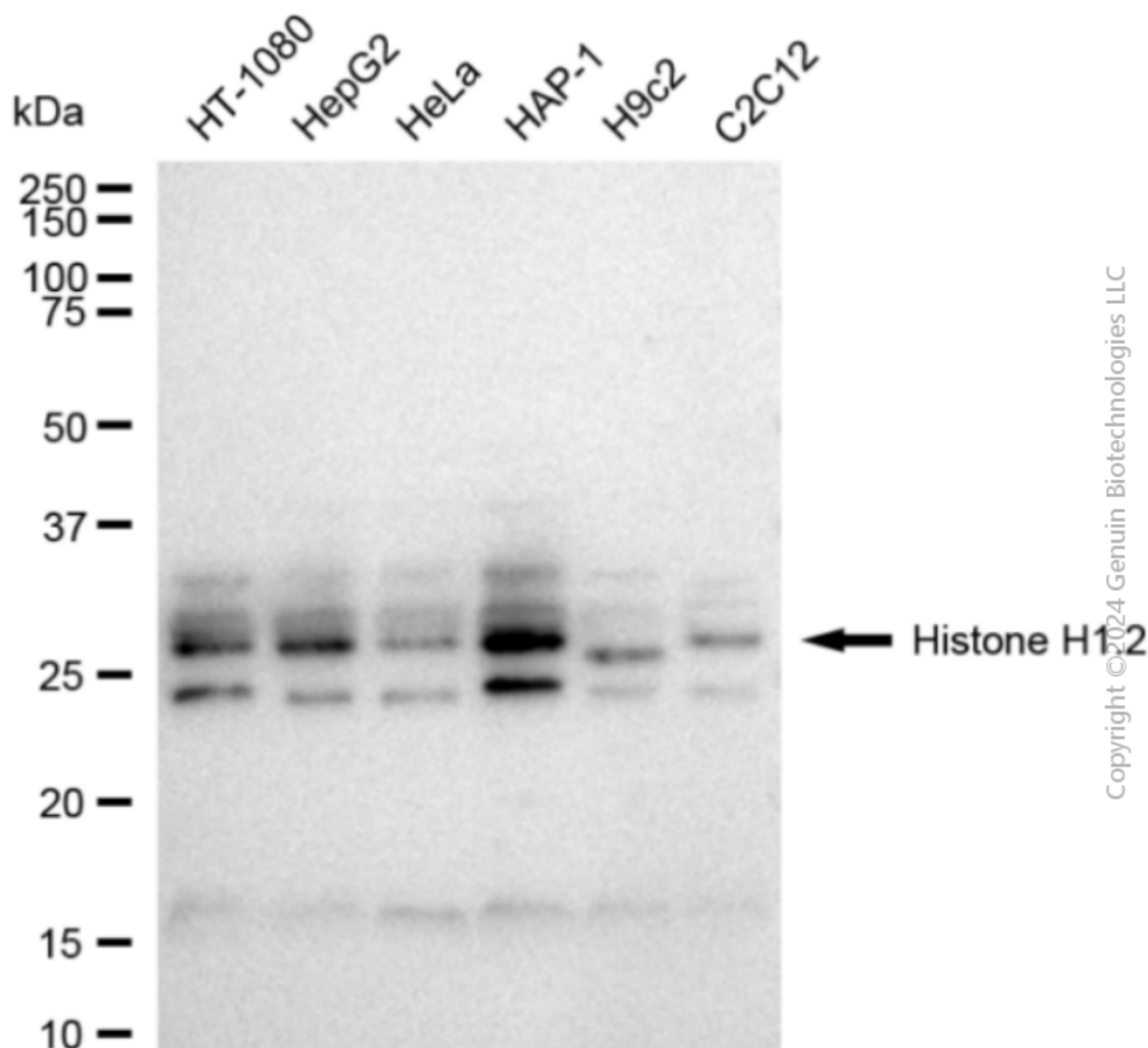
SALES@GENUINBIOTECH.COM
FAX: +1-540-855-7041

WWW.GENUINBIOTECH.COM

Anti-Histone H1.2 Recombinant Rabbit Monoclonal Antibody

PAGE 3

Immunocytochemical staining of HAP1 cells with anti-Histone H1.2 antibody (Cat#2174, 1:1,000). Nuclei were stained blue with DAPI; Histone H1.2 was stained magenta with Alexa Fluor® 647. Images were taken using Leica stellaris 5. Protein abundance based on laser Intensity and smart gain: High. Scale bar: 20 μ m.



Western blotting analysis using anti-Histone H1.2 antibody (Cat#2174). Total cell lysates (5 μ g) from various cell lines were loaded and separated by SDS-PAGE. The blot was incubated with anti-Histone H1.2 antibody (Cat#2174, 1:5,000) and HRP-conjugated goat anti-rabbit secondary antibody (Cat#201, 1:20,000) respectively. Image was developed using FeQ™ ECL Substrate Kit (Cat#226).

SUPPORT

SUPPORT@GENUINBIOTECH.COM
TEL: +1-540-855-7041

ORDERS

SALES@GENUINBIOTECH.COM
FAX: +1-540-855-7041

WWW.GENUINBIOTECH.COM