

# Anti-Lysine demethylase 4B Recombinant Rabbit Monoclonal Antibody



**Catalog #: 2178**

## Aliases

KDM4B; Lysine Demethylase 4B; KIAA0876; TDRD14B; JMJD2B; JmjC Domain-Containing Histone Demethylation Protein 3B; [Histone H3]-Trimethyl-L-Lysine(9) Demethylase 4B; Jumonji Domain-Containing Protein 2B; Lysine (K)-Specific Demethylase 4B; Lysine-Specific Demethylase 4B; Jumonji Domain Containing 2B; Tudor Domain Containing 14B; EC 1.14.11.66; EC 1.14.11; JHDM3B; MRD65

## Background

Gene Name: KDM4B

NCBI Gene Entry: [23030](#)

UniProt Entry: [O94953](#)

## Application Information

Molecular Weight: Predicted, 122 kDa; observed, 150 kDa

Clonality: Rabbit monoclonal antibody

Clone ID: 23GB6370

Species Reactivity: Human, mouse, rat

Applications Tested: Western blotting (WB), flow cytometry (FCM), immunocytochemistry (IC)

## Immunogen

A synthesized peptide derived from human KDM4B / JMJD2B

## Isotype

Rabbit IgG

## Storage Buffer

Supplied in PBS (pH 7.4) containing 50% glycerol, and 0.02% sodium azide.

## Storage

Store at -20 °C for one year.

## Recommended Dilutions

Western Blotting (WB): 1:1,000-1:5,000

Flow Cytometry (FCM): 1:2,000

Immunocytochemistry (IC): 1:100-1:1,000

---

### SUPPORT

SUPPORT@GENUINBIOTECH.COM  
TEL: +1-540-855-7041

### ORDERS

SALES@GENUINBIOTECH.COM  
FAX: +1-540-855-7041

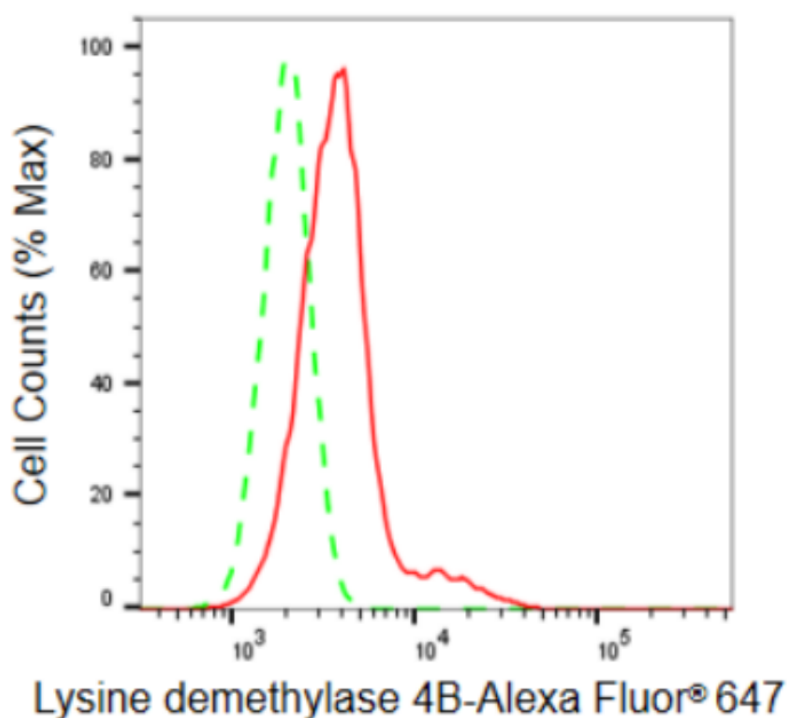
[WWW.GENUINBIOTECH.COM](http://WWW.GENUINBIOTECH.COM)

# Anti-Lysine demethylase 4B Recombinant Rabbit Monoclonal Antibody

PAGE 2

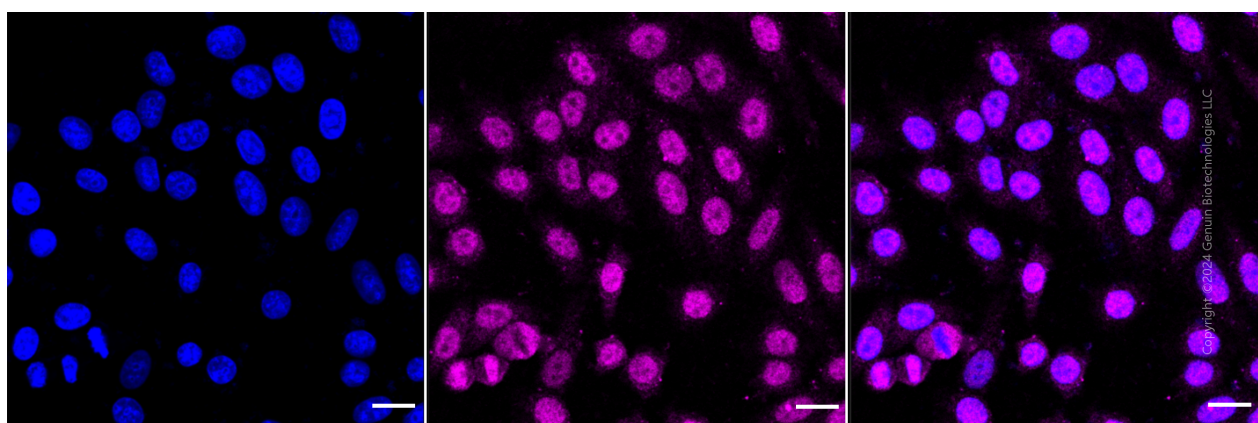
**Note:** This product is for research use only.

## Validation Data



Copyright ©2024 Genuin Biotechnologies LLC

Flow cytometric analysis of Lysine demethylase 4B expression in HepG2 cells using Lysine demethylase 4B antibody (Cat#2178, 1:2,000). Green, isotype control; red, Lysine demethylase 4B.



Immunocytochemical staining of HepG2 cells with anti-lysine demethylase 4B antibody (Cat#2178, 1:1,000). Nuclei were stained blue with DAPI; Lysine demethylase 4B was stained magenta with Alexa Fluor® 647. Images were taken using Leica stellaris 5. Protein abundance based on laser Intensity and smart gain: Medium. Scale bar: 20  $\mu$ m.

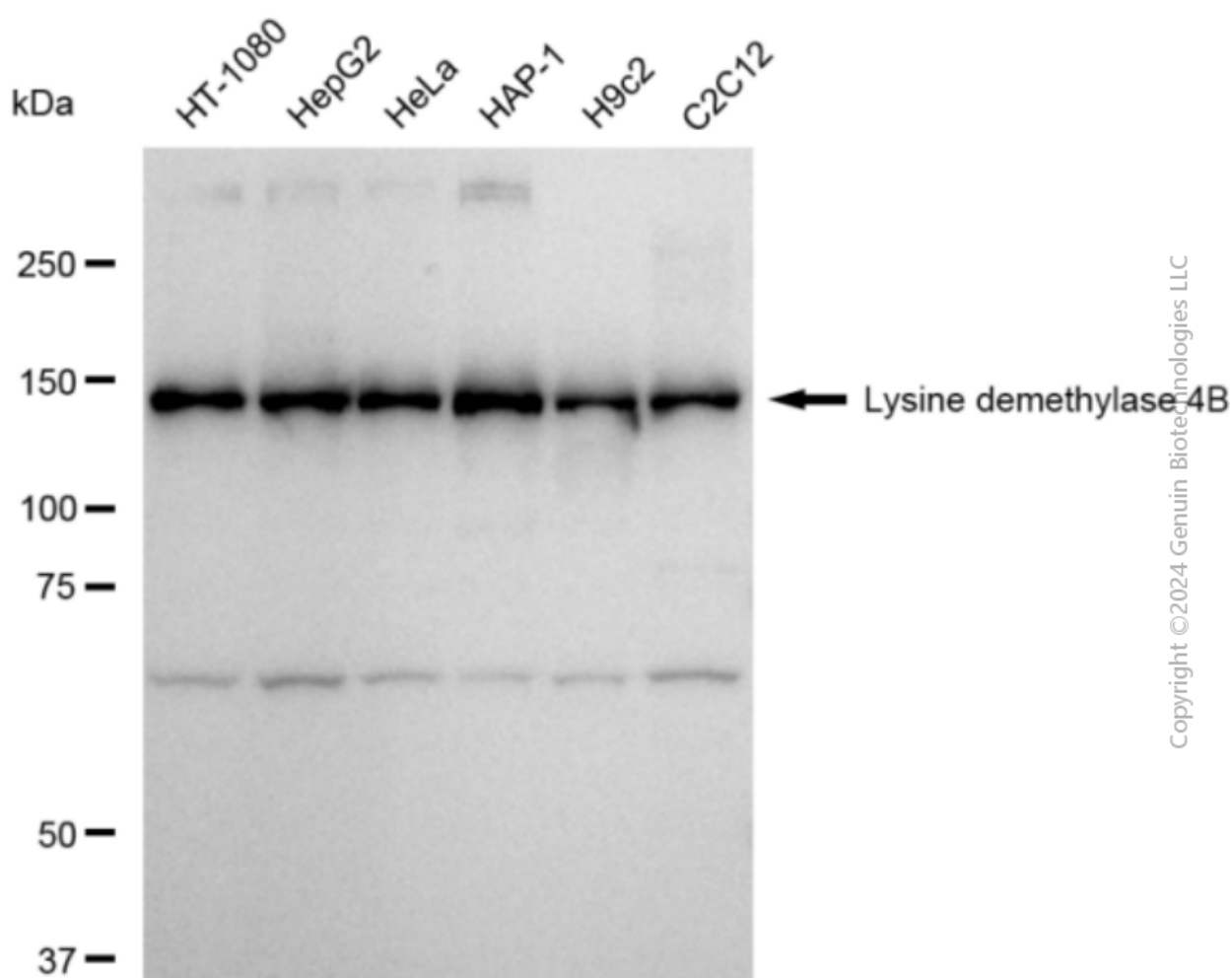
### SUPPORT

SUPPORT@GENUINBIOTECH.COM  
TEL: +1-540-855-7041

### ORDERS

SALES@GENUINBIOTECH.COM  
FAX: +1-540-855-7041

WWW.GENUINBIOTECH.COM



Copyright ©2024 Genuin Biotechnologies LLC

Western blotting analysis using anti-Lysine demethylase 4B antibody (Cat#2178). Total cell lysates (30 µg) from various cell lines were loaded and separated by SDS-PAGE. The blot was incubated with anti-Lysine demethylase 4B antibody (Cat#2178, 1:5,000) and HRP-conjugated goat anti-rabbit secondary antibody (Cat#201, 1:20,000) respectively. Image was developed using FeQ™ ECL Substrate Kit (Cat#226).