

# Anti-LGR6 Recombinant Rabbit Monoclonal Antibody



**Catalog #: 2184**

## Aliases

LGR6; Leucine Rich Repeat Containing G Protein-Coupled Receptor 6; Leucine-Rich Repeat-Containing G-Protein Coupled Receptor 6; FLJ14471; Gonadotropin Receptor; VTS20631; GPCR

## Background

Gene Name: LGR6

NCBI Gene Entry: [59352](#)

UniProt Entry: [Q9HBX8](#)

## Application Information

Molecular Weight: Predicted, 104 kDa; observed, 104 kDa

Clonality: Rabbit monoclonal antibody

Clone ID: 23GB6400

Species Reactivity: Human, mouse, rat

Applications Tested: Western blotting (WB), flow cytometry (FCM), immunocytochemistry (IC)

## Immunogen

A synthesized peptide derived from human GPCR / LGR6

## Isotype

Rabbit IgG

## Storage Buffer

Supplied in PBS (pH 7.4) containing 50% glycerol, and 0.02% sodium azide.

## Storage

Store at -20 °C for one year.

## Recommended Dilutions

Western Blotting (WB): 1:1,000-1:5,000

Flow Cytometry (FCM): 1:2,000

Immunocytochemistry (IC): 1:100-1:1,000

**Note:** This product is for research use only.

## Validation Data

---

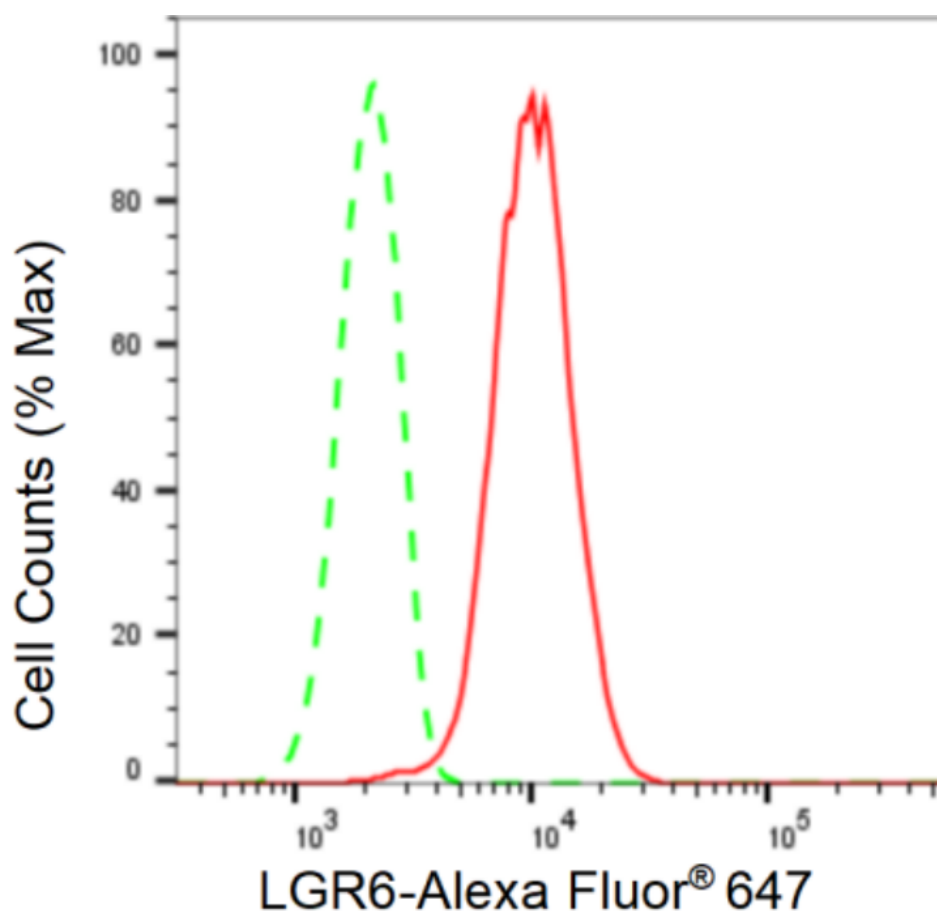
### SUPPORT

SUPPORT@GENUINBIOTECH.COM  
TEL: +1-540-855-7041

### ORDERS

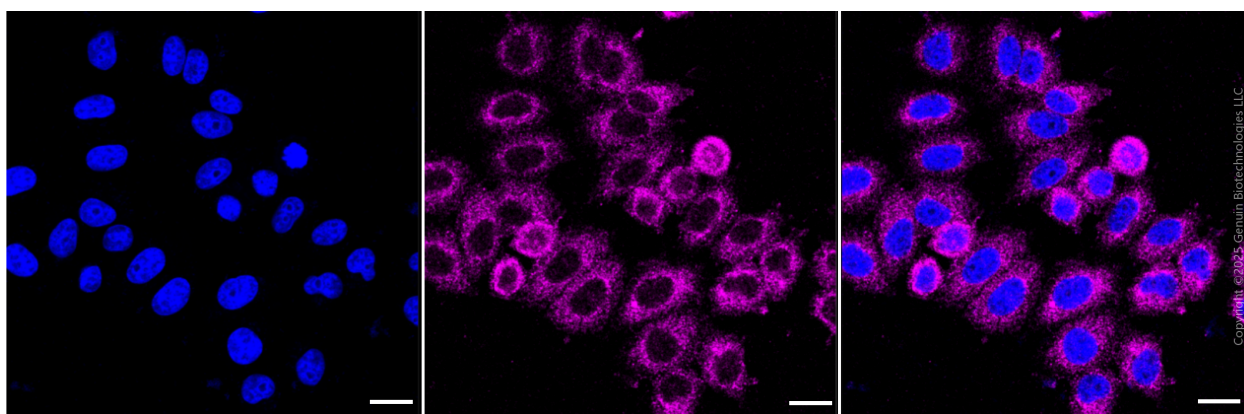
SALES@GENUINBIOTECH.COM  
FAX: +1-540-855-7041

[WWW.GENUINBIOTECH.COM](http://WWW.GENUINBIOTECH.COM)



Copyright ©2024 Genuin Biotechnologies LLC

Flow cytometric analysis of LGR6 expression in HepG2 cells using LGR6 antibody (Cat#2184, 1:2,000). Green, isotype control; red, LGR6.



Copyright ©2025 Genuin Biotechnologies LLC

Immunocytochemical staining of HepG2 cells with anti-LGR6 antibody (Cat #2184, 1:1,000) . Nuclei were stained blue with DAPI; LGR6 was stained magenta with Alexa Fluor® 647. Images were taken using Leica stellaris 5. Protein abundance based on laser Intensity and smart gain: Medium. Scale bar, 20  $\mu$ m.

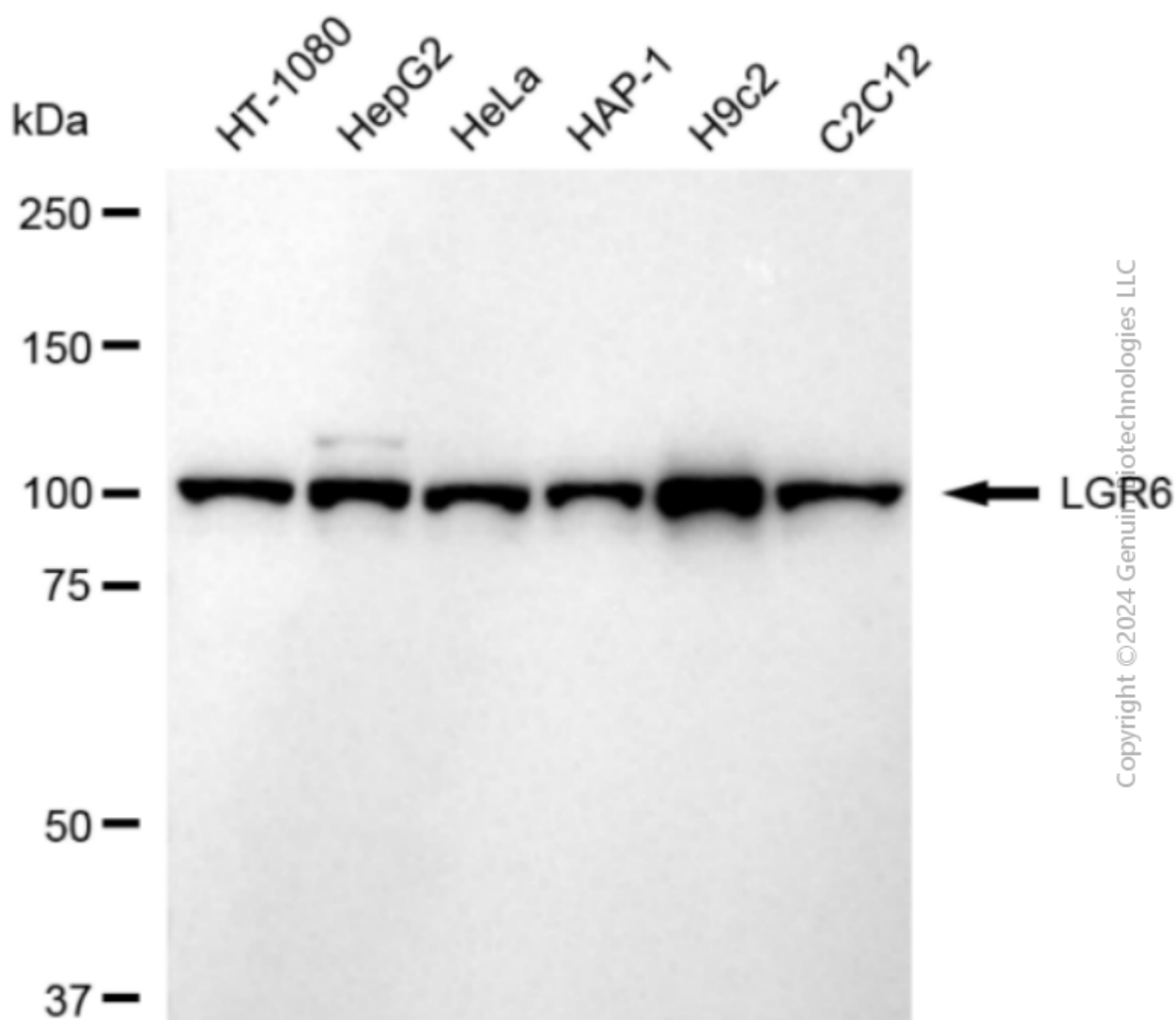
## SUPPORT

SUPPORT@GENUINBIOTECH.COM  
TEL: +1-540-855-7041

## ORDERS

SALES@GENUINBIOTECH.COM  
FAX: +1-540-855-7041

[WWW.GENUINBIOTECH.COM](http://WWW.GENUINBIOTECH.COM)



Copyright © 2024 Genuin Biotechnologies LLC

Western blotting analysis using anti-LGR6 antibody (Cat#2184). Total cell lysates (30 µg) from various cell lines were loaded and separated by SDS-PAGE. The blot was incubated with anti-LGR6 antibody (Cat#2184, 1:5,000) and HRP-conjugated goat anti-rabbit secondary antibody (Cat#201, 1:20,000) respectively. Image was developed using FeQ™ ECL Substrate Kit (Cat#226).