

Anti-Hippocalcin Recombinant Rabbit Monoclonal Antibody



Catalog #: 2185

Aliases

HPCA; Hippocalcin; Neuron-Specific Calcium-Binding Protein Hippocalcin; Dystonia 2, Torsion (Autosomal Recessive); Calcium-Binding Protein BDR-2; BDR2; DYT2

Background

Gene Name: HPCA

NCBI Gene Entry: [3208](#)

UniProt Entry: [P84074](#)

Application Information

Molecular Weight: Predicted, 22 kDa; observed, 26 kDa

Clonality: Rabbit monoclonal antibody

Clone ID: 23GB6405

Species Reactivity: Human, mouse, rat

Applications Tested: Western blotting (WB), flow cytometry (FCM), immunocytochemistry (IC)

Immunogen

A synthesized peptide derived from human Hippocalcin

Isotype

Rabbit IgG

Storage Buffer

Supplied in PBS (pH 7.4) containing 50% glycerol, and 0.02% sodium azide.

Storage

Store at -20 °C for one year.

Recommended Dilutions

Western Blotting (WB): 1:1,000-1:5,000

Flow Cytometry (FCM): 1:2,000

Immunocytochemistry (IC): 1:100-1:1,000

Note: This product is for research use only.

Validation Data

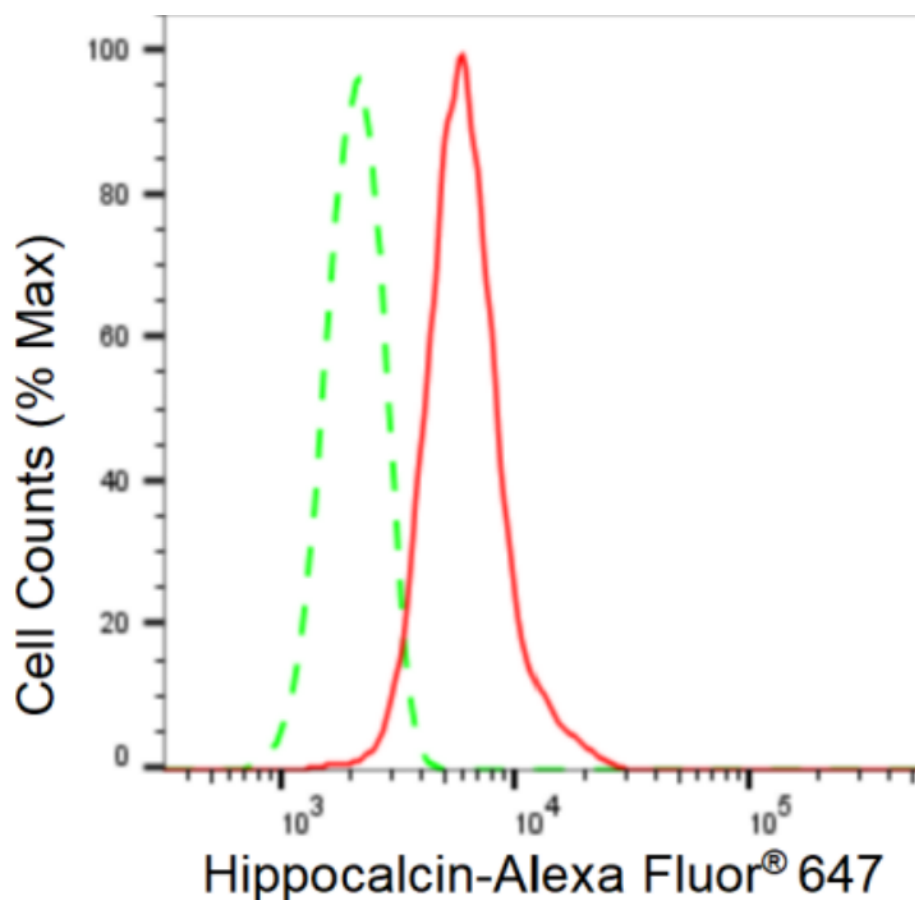
SUPPORT

SUPPORT@GENUINBIOTECH.COM
TEL: +1-540-855-7041

ORDERS

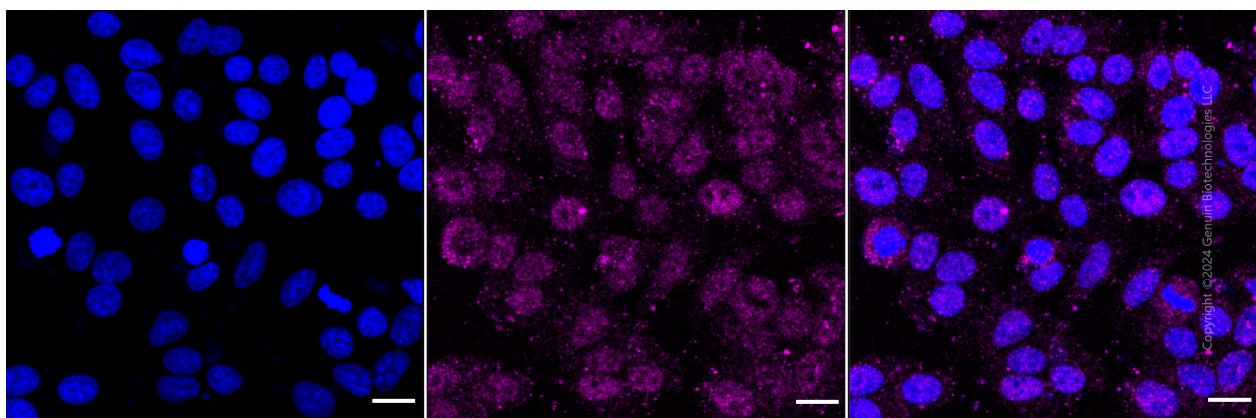
SALES@GENUINBIOTECH.COM
FAX: +1-540-855-7041

WWW.GENUINBIOTECH.COM

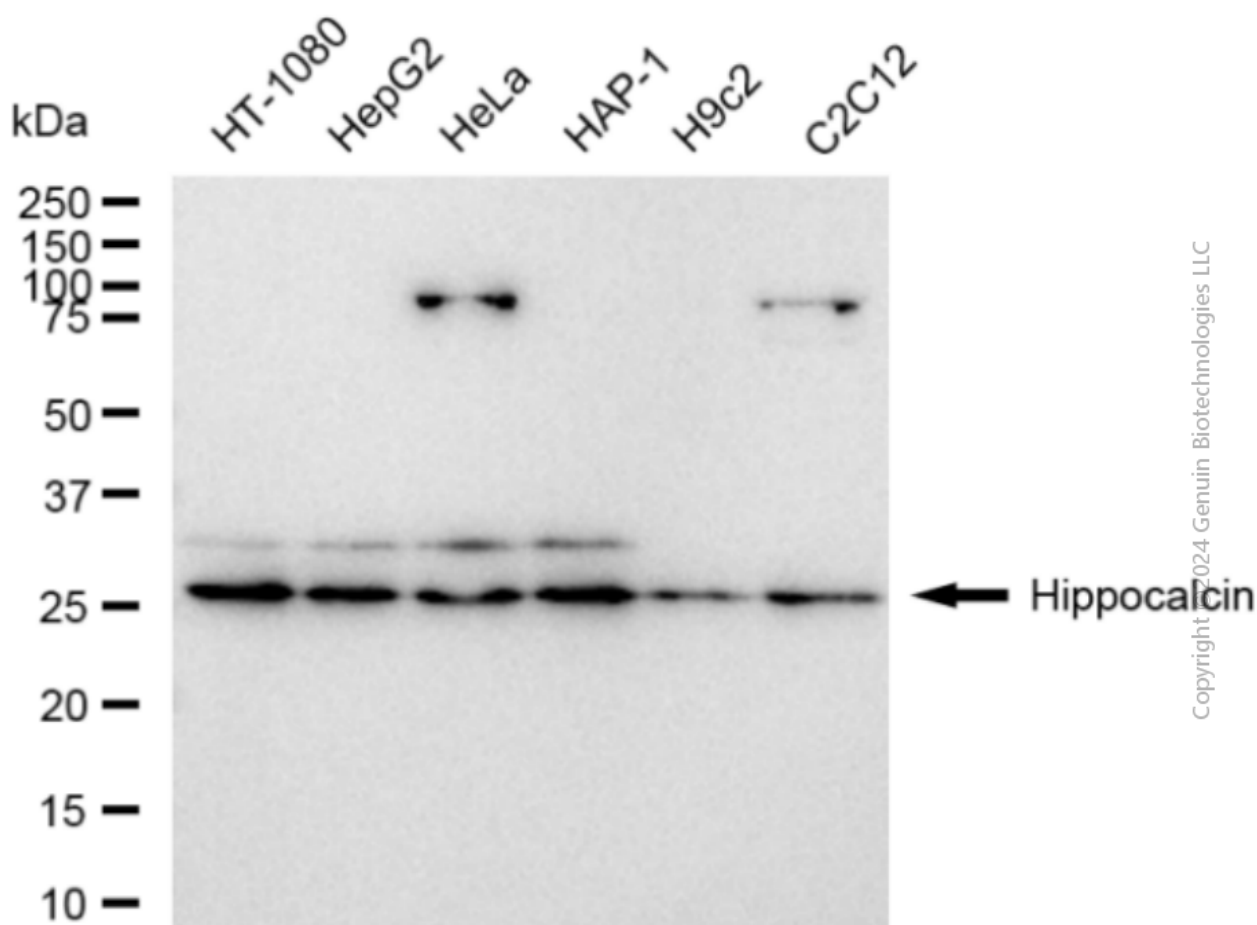


Copyright ©2024 Genuin Biotechnologies LLC

Flow cytometric analysis of Hippocalcin expression in HepG2 cells using Hippocalcin antibody (Cat#2185, 1:2,000). Green, isotype control; red, Hippocalcin.



Immunocytochemical staining of HepG2 cells with anti-hippocalcin antibody (Cat#2185, 1:1,000). Nuclei were stained blue with DAPI; Hippocalcin was stained magenta with Alexa Fluor® 647. Images were taken using Leica stellaris 5. Protein abundance based on laser Intensity and smart gain: Medium. Scale bar: 20 μ m.



Western blotting analysis using anti-Hippocalcin antibody (Cat#2185). Total cell lysates (30 μ g) from various cell lines were loaded and separated by SDS-PAGE. The blot was incubated with anti-Hippocalcin antibody (Cat#2185, 1:5,000) and HRP-conjugated goat anti-rabbit secondary antibody (Cat#201, 1:20,000) respectively. Image was developed using FeQ™ ECL Substrate Kit (Cat#226).