

Anti-Lysyl-tRNA synthetase 1 Recombinant Rabbit Monoclonal Antibody



Catalog #: 2186

Aliases

KARS1; Lysyl-TRNA Synthetase 1; KARS2; KARS; Lysyl-TRNA Synthetase; Lysine--TRNA Ligase; Lysine TRNA Ligase; EC 6.1.1.6; DFNB89; LysRS; Deafness, Autosomal Recessive 89; EC 2.7.7.-; KIAA0070; EC 6.1.1; CMTRIB; DEAPLE; LEPID; KRS

Background

Gene Name: KARS1

NCBI Gene Entry: [3735](#)

UniProt Entry: [Q15046](#)

Application Information

Molecular Weight: Predicted, 68 kDa; observed, 73 kDa

Clonality: Rabbit monoclonal antibody

Clone ID: 23GB6410

Species Reactivity: Human, mouse, rat

Applications Tested: Western blotting (WB), flow cytometry (FCM)

Immunogen

A synthesized peptide derived from human LysRS

Isotype

Rabbit IgG

Storage Buffer

Supplied in PBS (pH 7.4) containing 50% glycerol, and 0.02% sodium azide.

Storage

Store at -20 °C for one year.

Recommended Dilutions

Western Blotting (WB): 1:1,000-1:5,000

Flow Cytometry (FCM): 1:2,000

Note: This product is for research use only.

Validation Data

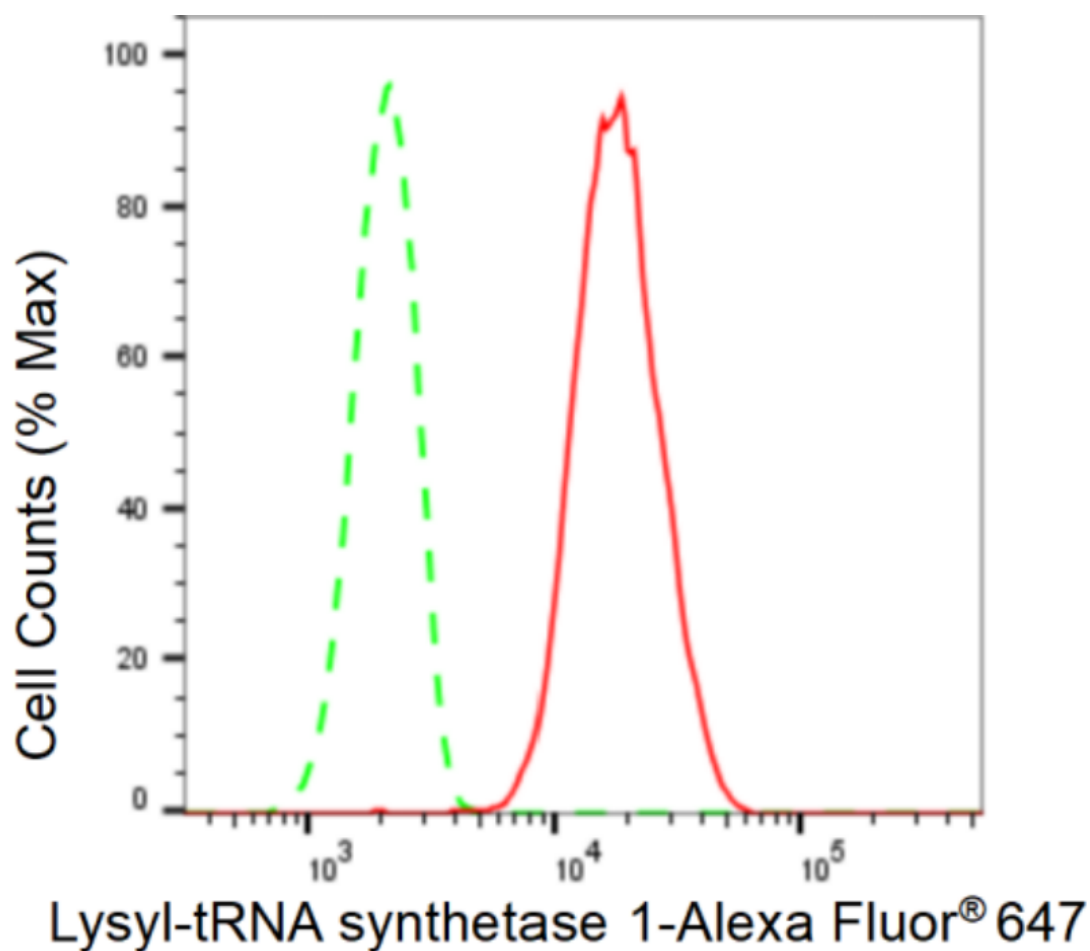
SUPPORT

SUPPORT@GENUINBIOTECH.COM
TEL: +1-540-855-7041

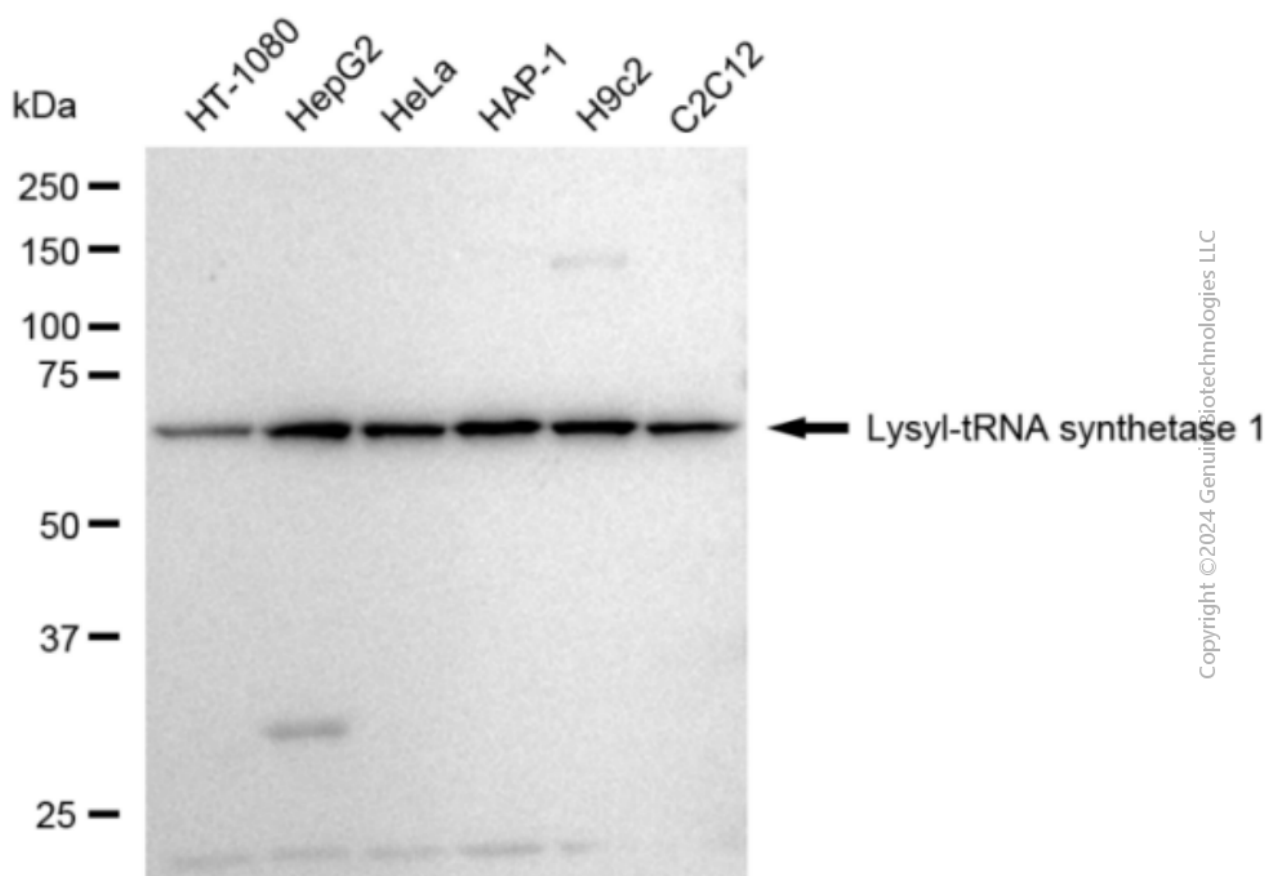
ORDERS

SALES@GENUINBIOTECH.COM
FAX: +1-540-855-7041

WWW.GENUINBIOTECH.COM



Flow cytometric analysis of Lysyl-tRNA synthetase 1 expression in HepG2 cells using Lysyl-tRNA synthetase 1 antibody (2186, 1:2,000). Green, isotype control; red, Lysyl-tRNA synthetase 1.



Copyright ©2024 GenuinBiotechnologies LLC

Western blotting analysis using anti-Lysyl-tRNA synthetase 1 antibody (Cat#2186). Total cell lysates (30 μ g) from various cell lines were loaded and separated by SDS-PAGE. The blot was incubated with anti-Lysyl-tRNA synthetase 1 antibody (Cat#2186, 1:5,000) and HRP-conjugated goat anti-rabbit secondary antibody (Cat#201, 1:20,000) respectively. Image was developed using FeQ™ ECL Substrate Kit (Cat#226).