

Anti-LIMK1 Recombinant Rabbit Monoclonal Antibody



Catalog #: 2190

Aliases

LIMK1; LIM Domain Kinase 1; LIMK; EC 2.7.11.1; LIMK-1; LIM Motif-Containing Protein Kinase

Background

Gene Name: LIMK1

NCBI Gene Entry: [3984](#)

UniProt Entry: [P53667](#)

Application Information

Molecular Weight: Predicted, 73 kDa; observed, 72 kDa

Clonality: Rabbit monoclonal antibody

Clone ID: 23GB6425

Species Reactivity: Human, mouse

Applications Tested: Western blotting (WB), immunocytochemistry (IC)

Immunogen

A synthesized peptide derived from human LIM Kinase 1

Isotype

Rabbit IgG

Storage Buffer

Supplied in PBS (pH 7.4) containing 50% glycerol, and 0.02% sodium azide.

Storage

Store at -20 °C for one year.

Recommended Dilutions

Western Blotting (WB): 1:1,000-1:5,000

Immunocytochemistry (IC): 1:100-1:1,000

Note: This product is for research use only.

Validation Data

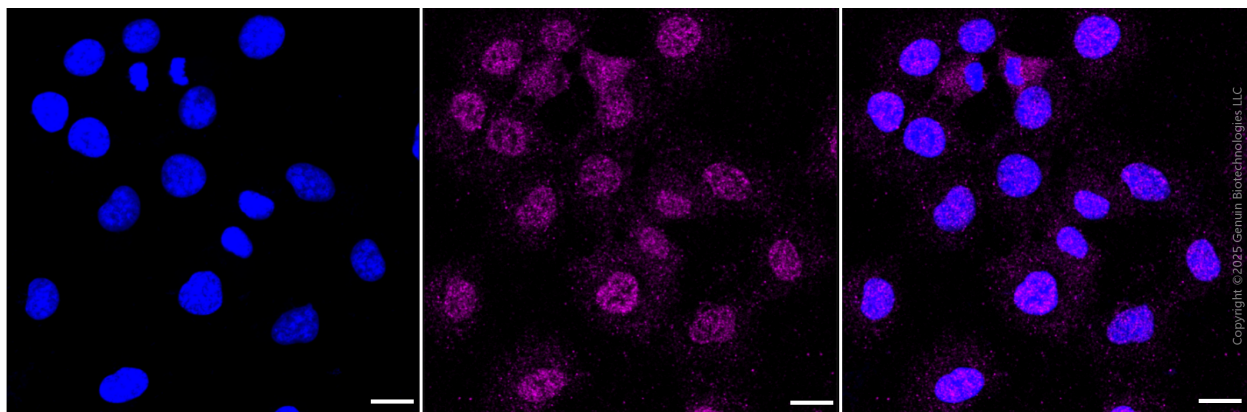
SUPPORT

SUPPORT@GENUINBIOTECH.COM
TEL: +1-540-855-7041

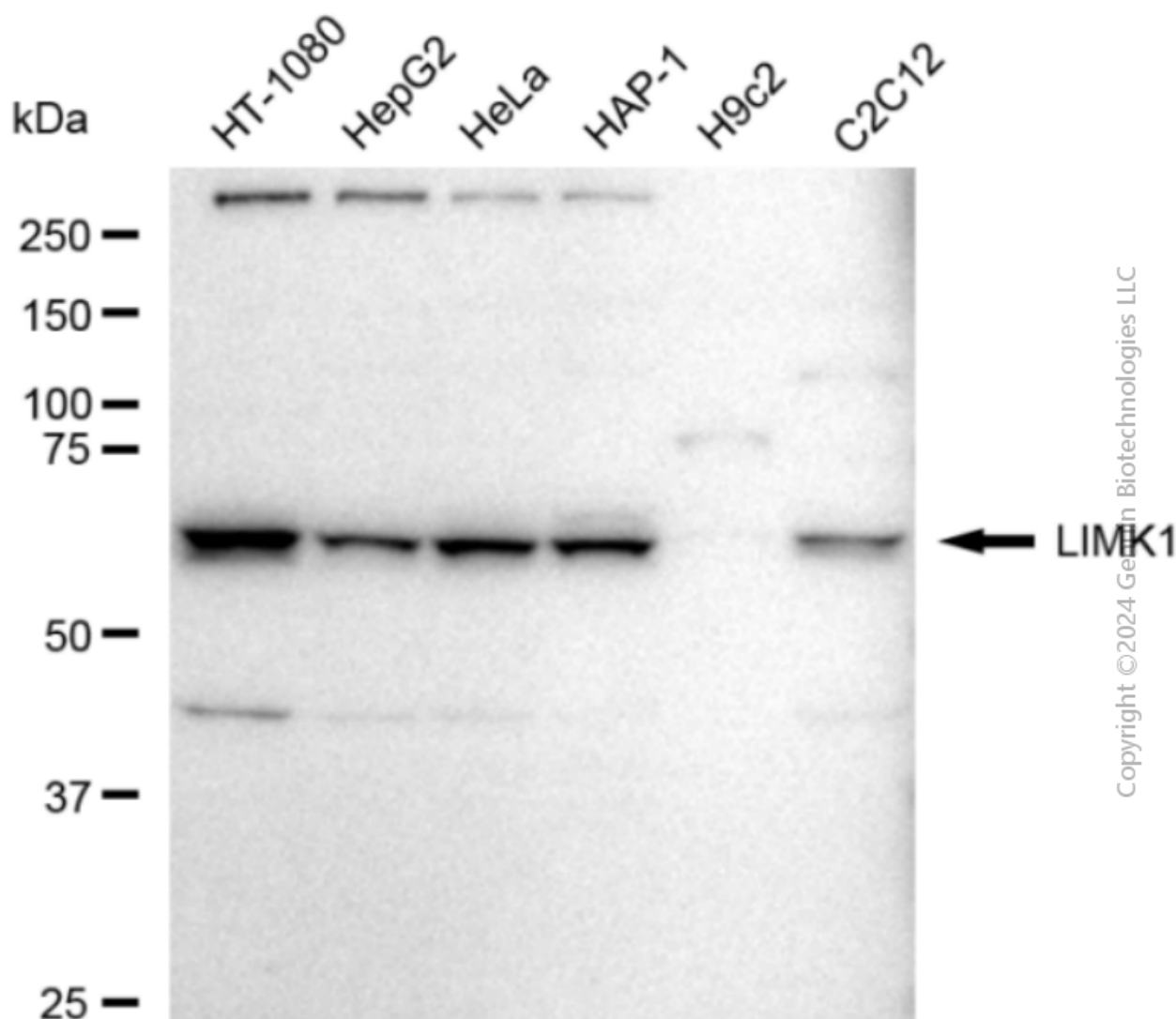
ORDERS

SALES@GENUINBIOTECH.COM
FAX: +1-540-855-7041

WWW.GENUINBIOTECH.COM



Immunocytochemical staining of HT-1080 cells with anti-LIMK1 antibody (Cat #2190, 1:1,000) . Nuclei were stained blue with DAPI; LIMK1 was stained magenta with Alexa Fluor® 647. Images were taken using Leica stellaris 5. Protein abundance based on laser Intensity and smart gain: Medium. Scale bar, 20 μ m.



Anti-LIMK1 Recombinant Rabbit Monoclonal Antibody

PAGE 3

Western blotting analysis using anti-LIMK1 antibody (Cat#2190). Total cell lysates (30 µg) from various cell lines were loaded and separated by SDS-PAGE. The blot was incubated with anti-LIMK1 antibody (Cat#2190, 1:5,000) and HRP-conjugated goat anti-rabbit secondary antibody (Cat#201, 1:20,000) respectively. Image was developed using FeQ™ ECL Substrate Kit (Cat#226).

SUPPORT

SUPPORT@GENUINBIOTECH.COM
TEL: +1-540-855-7041

ORDERS

SALES@GENUINBIOTECH.COM
FAX: +1-540-855-7041

WWW.GENUINBIOTECH.COM