

Anti-Growth factor receptor bound protein 7 Recombinant Rabbit Monoclonal Antibody



Catalog #: 2194

Aliases

GRB7; Growth Factor Receptor Bound Protein 7; Growth Factor Receptor-Bound Protein 7; Epidermal Growth Factor Receptor GRB-7; GRB7 Adapter Protein; B47

Background

Gene Name: GRB7

NCBI Gene Entry: [2886](#)

UniProt Entry: [Q14451](#)

Application Information

Molecular Weight: Predicted, 60 kDa; observed, 60 kDa

Clonality: Rabbit monoclonal antibody

Clone ID: 23GB6445

Species Reactivity: Human

Applications Tested: Western blotting (WB), flow cytometry (FCM)

Immunogen

A synthesized peptide derived from human GRB7

Isotype

Rabbit IgG

Storage Buffer

Supplied in PBS (pH 7.4) containing 50% glycerol, and 0.02% sodium azide.

Storage

Store at -20 °C for one year.

Recommended Dilutions

Western Blotting (WB): 1:1,000-1:5,000

Flow Cytometry (FCM): 1:2,000

Note: This product is for research use only.

Validation Data

SUPPORT

SUPPORT@GENUINBIOTECH.COM
TEL: +1-540-855-7041

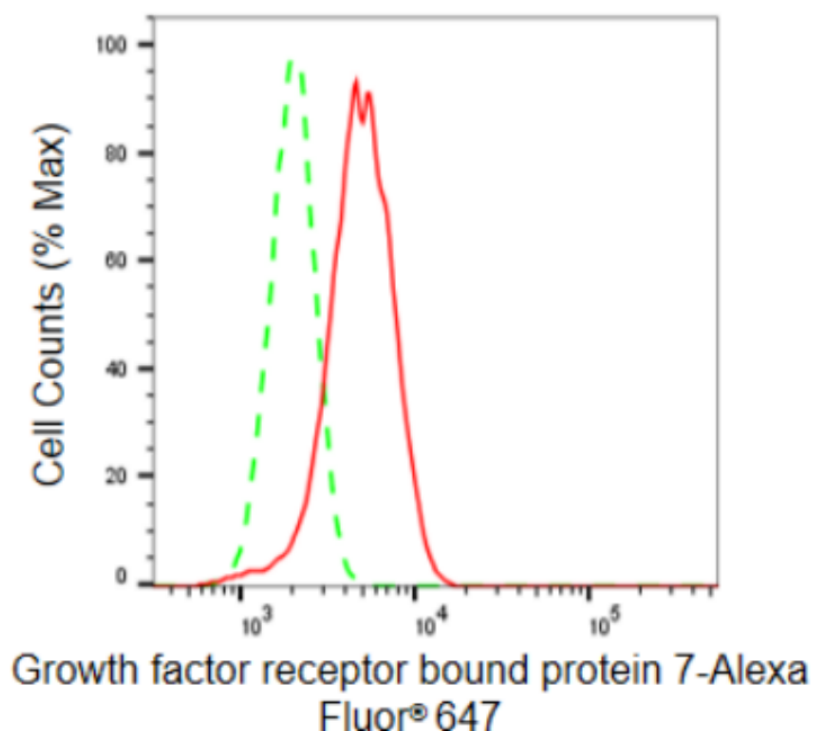
ORDERS

SALES@GENUINBIOTECH.COM
FAX: +1-540-855-7041

WWW.GENUINBIOTECH.COM

Anti-Growth factor receptor bound protein 7 Recombinant Rabbit Monoclonal Antibody

PAGE 2



Copyright ©2024 Genuin Biotechnologies LLC

Flow cytometric analysis of Growth factor receptor bound protein 7 expression in HepG2 cells using Growth factor receptor bound protein 7 antibody (Cat#2194, 1:2,000). Green, isotype control; red, Growth factor receptor bound protein 7.

SUPPORT

SUPPORT@GENUINBIOTECH.COM
TEL: +1-540-855-7041

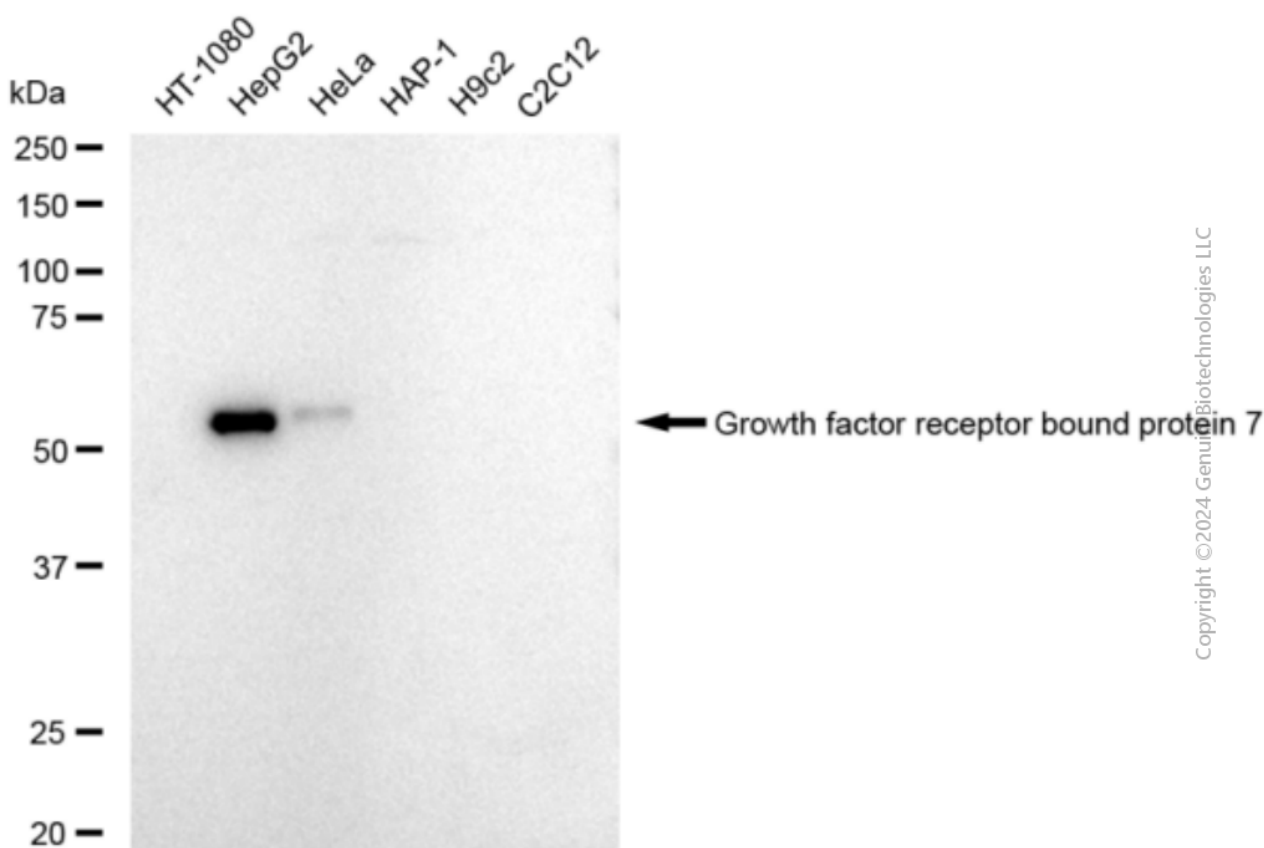
ORDERS

SALES@GENUINBIOTECH.COM
FAX: +1-540-855-7041

WWW.GENUINBIOTECH.COM

Anti-Growth factor receptor bound protein 7 Recombinant Rabbit Monoclonal Antibody

PAGE 3



Western blotting analysis using anti-Growth factor receptor bound protein 7 antibody (Cat#2194). Total cell lysates (30 μ g) from various cell lines were loaded and separated by SDS-PAGE. The blot was incubated with anti-Growth factor receptor bound protein 7 antibody (Cat#2194, 1:5,000) and HRP-conjugated goat anti-rabbit secondary antibody (Cat#201, 1:20,000) respectively. Image was developed using FeQ™ ECL Substrate Kit (Cat#226).

SUPPORT

SUPPORT@GENUINBIOTECH.COM
TEL: +1-540-855-7041

ORDERS

SALES@GENUINBIOTECH.COM
FAX: +1-540-855-7041

WWW.GENUINBIOTECH.COM