

Anti-Lymphocyte cytosolic protein 1 Recombinant Rabbit Monoclonal Antibody



Catalog #: 2198

Aliases

LCP1; Lymphocyte Cytosolic Protein 1; LC64P; PLS2; L-PLASTIN; CP64; Plastin-2; LCP-1; L-Plastin (Lymphocyte Cytosolic Protein 1) (LCP-1) (LC64P); BA139H14.1 (Lymphocyte Cytosolic Protein 1 (L-Plastin)); Lymphocyte Cytosolic Protein 1 (L-Plastin); Lymphocyte Cytosolic Protein-1 (Plasmin); Epididymis Secretory Protein Li 37; Plastin 2; L-Plastin; HEL-S-37; LPL

Background

Gene Name: LCP1

NCBI Gene Entry: [3936](#)

UniProt Entry: [P13796](#)

Application Information

Molecular Weight: Predicted, 70 kDa; observed, 70 kDa

Clonality: Rabbit monoclonal antibody

Clone ID: 23GB6465

Species Reactivity: Human

Applications Tested: Western blotting (WB), flow cytometry (FCM), immunocytochemistry (IC)

Immunogen

A synthesized peptide derived from human Plastin L

Isotype

Rabbit IgG

Storage Buffer

Supplied in PBS (pH 7.4) containing 50% glycerol, and 0.02% sodium azide.

Storage

Store at -20 °C for one year.

Recommended Dilutions

Western Blotting (WB): 1:1,000-1:5,000

Flow Cytometry (FCM): 1:2,000

Immunocytochemistry (IC): 1:100-1:1,000

SUPPORT

SUPPORT@GENUINBIOTECH.COM
TEL: +1-540-855-7041

ORDERS

SALES@GENUINBIOTECH.COM
FAX: +1-540-855-7041

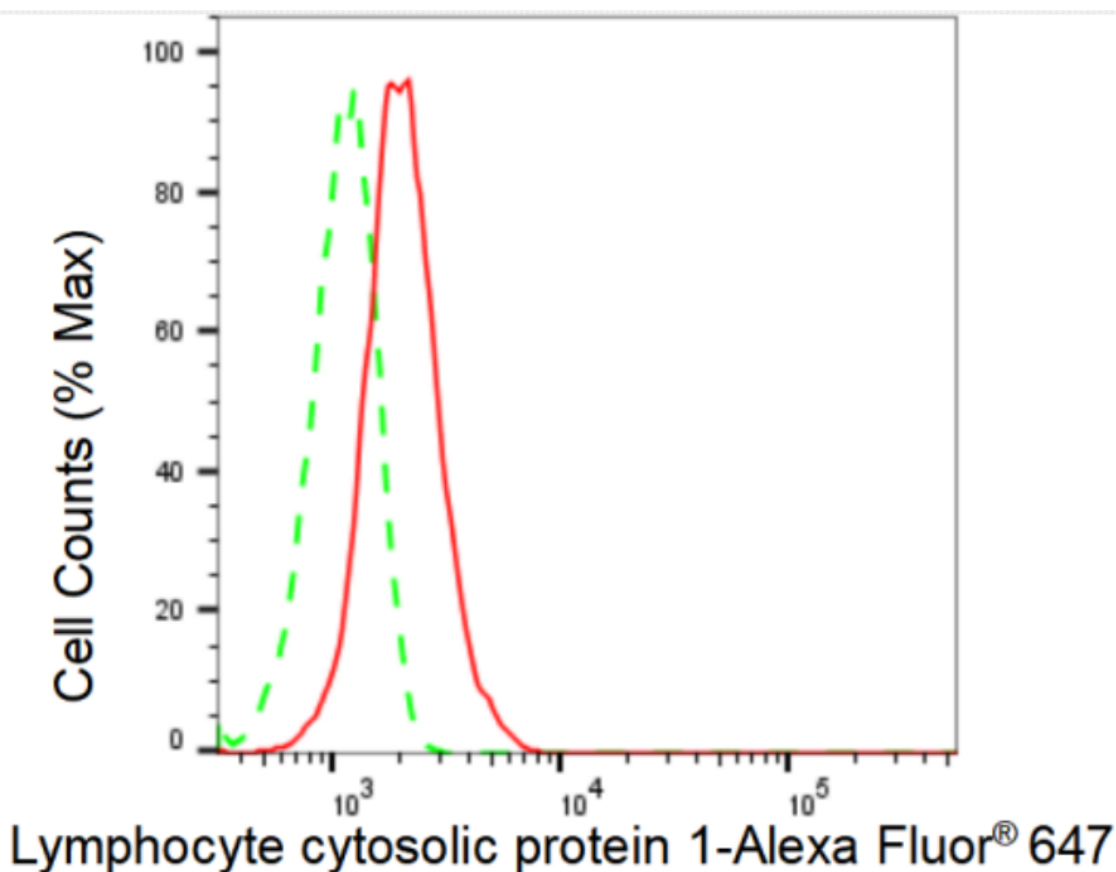
WWW.GENUINBIOTECH.COM

Anti-Lymphocyte cytosolic protein 1 Recombinant Rabbit Monoclonal Antibody

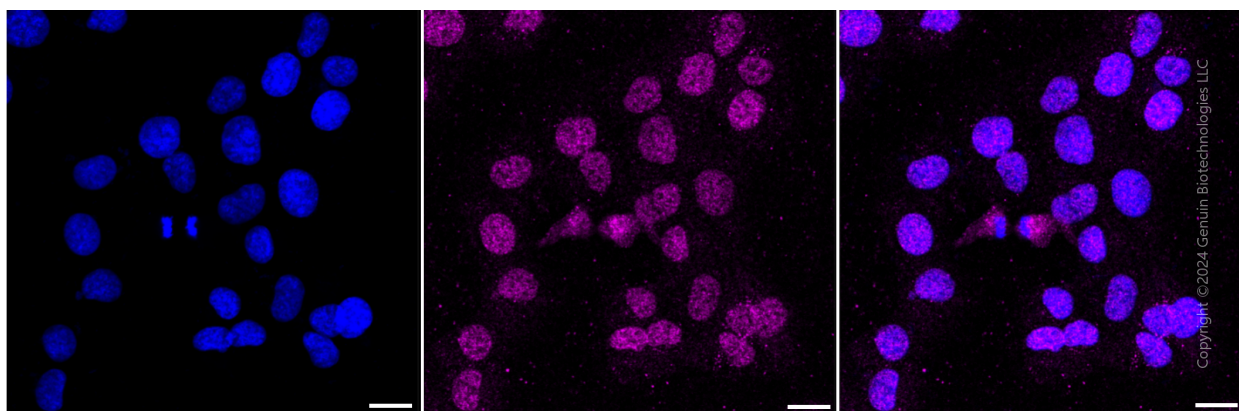
PAGE 2

Note: This product is for research use only.

Validation Data



Flow cytometric analysis of Lymphocyte cytosolic protein 1 expression in HT-1080 cells using Lymphocyte cytosolic protein 1 antibody (Cat#2198, 1:2,000). Green, isotype control; red, Lymphocyte cytosolic protein 1.



Immunocytochemical staining of HT-1080 cells with anti-Lymphocyte cytosolic protein 1 antibody (Cat#2198, 1:1,000). Nuclei were stained blue with DAPI; Lymphocyte cytosolic protein 1 was stained magenta with Alexa Fluor® 647. Images were taken using Leica stellaris 5. Protein

SUPPORT

SUPPORT@GENUINBIOTECH.COM
TEL: +1-540-855-7041

ORDERS

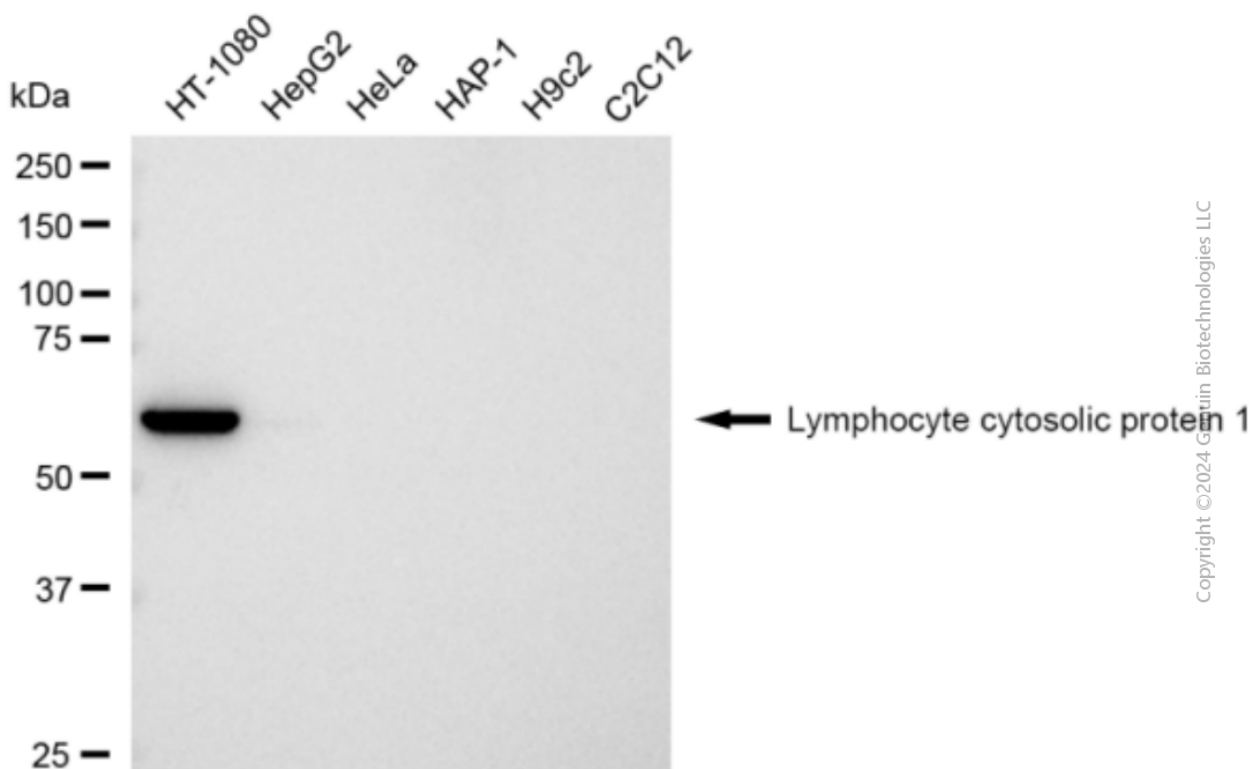
SALES@GENUINBIOTECH.COM
FAX: +1-540-855-7041

WWW.GENUINBIOTECH.COM

Anti-Lymphocyte cytosolic protein 1 Recombinant Rabbit Monoclonal Antibody

PAGE 3

abundance based on laser Intensity and smart gain: Medium. Scale bar: 20 μ m.



Western blotting analysis using anti-Lymphocyte cytosolic protein 1 antibody (Cat#2198). Total cell lysates (30 μ g) from various cell lines were loaded and separated by SDS-PAGE. The blot was incubated with anti-Lymphocyte cytosolic protein 1 antibody (Cat#2198, 1:5,000) and HRP-conjugated goat anti-rabbit secondary antibody (Cat#201, 1:20,000) respectively. Image was developed using FeQ™ ECL Substrate Kit (Cat#226).

SUPPORT

SUPPORT@GENUINBIOTECH.COM
TEL: +1-540-855-7041

ORDERS

SALES@GENUINBIOTECH.COM
FAX: +1-540-855-7041

WWW.GENUINBIOTECH.COM