

Anti-GTF2F2 Recombinant Rabbit Monoclonal Antibody



Catalog #: 2203

Aliases

GTF2F2; General Transcription Factor IIF Subunit 2; RAP30; TFIIF; BTF4; General Transcription Factor IIF, Polypeptide 2, 30kDa; Transcription Initiation Factor IIF Subunit Beta; General Transcription Factor IIF 30 KDa Subunit; Transcription Initiation Factor RAP30; TFIIF-Beta; General Transcription Factor IIF, Polypeptide 1 (74kD Subunit); ATP-Dependent Helicase GTF2F2; EC 3.6.1; TF2F2

Background

Gene Name: GTF2F2

NCBI Gene Entry: [2963](#)

UniProt Entry: [P13984](#)

Application Information

Molecular Weight: Predicted, 28 kDa; observed, 30 kDa

Clonality: Rabbit monoclonal antibody

Clone ID: 23GB6490

Species Reactivity: Human, mouse, rat

Applications Tested: Western blotting (WB)

Immunogen

A synthesized peptide derived from human GTF2F2

Isotype

Rabbit IgG

Storage Buffer

Supplied in PBS (pH 7.4) containing 50% glycerol, and 0.02% sodium azide.

Storage

Store at -20 °C for one year.

Recommended Dilutions

Western Blotting (WB): 1:1,000-1:5,000

Note: This product is for research use only.

SUPPORT

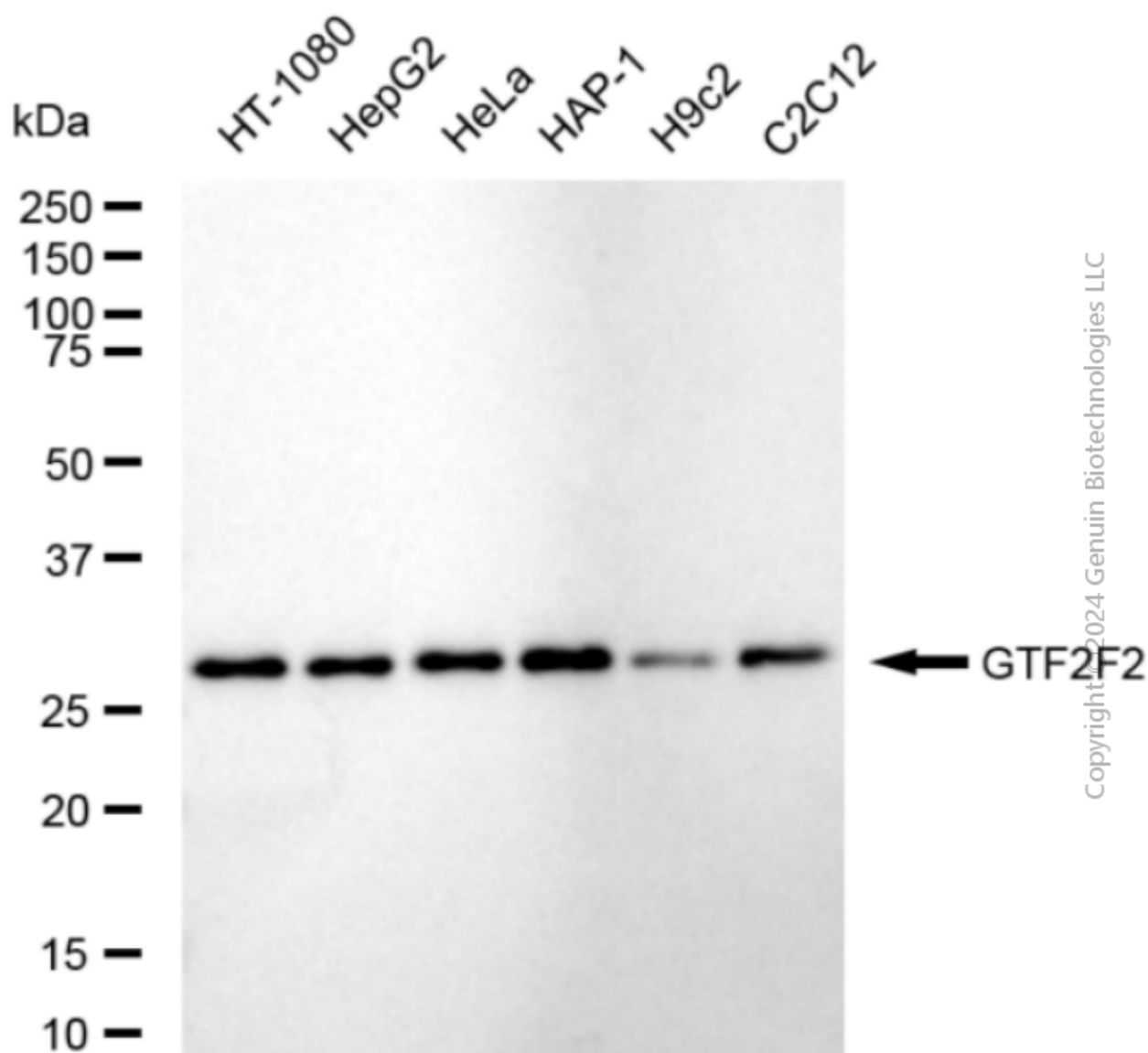
SUPPORT@GENUINBIOTECH.COM
TEL: +1-540-855-7041

ORDERS

SALES@GENUINBIOTECH.COM
FAX: +1-540-855-7041

WWW.GENUINBIOTECH.COM

Validation Data



Western blotting analysis using anti-GTF2F2 antibody (Cat#2203). Total cell lysates (30 µg) from various cell lines were loaded and separated by SDS-PAGE. The blot was incubated with anti-GTF2F2 antibody (Cat#2203, 1:5,000) and HRP-conjugated goat anti-rabbit secondary antibody (Cat#201, 1:20,000) respectively. Image was developed using FeQ™ ECL Substrate Kit (Cat#226).