

# Anti-Keratin 18 Recombinant Rabbit Monoclonal Antibody



**Catalog #: 2205**

## Aliases

KRT18; Keratin 18; Cell Proliferation-Inducing Gene 46 Protein; Keratin, Type I Cytoskeletal 18; Keratin 18, Type I; CK-18; CYK18; K18; Cytokeratin 18; Cytokeratin-18 Keratin-18

## Background

Gene Name: KRT18

NCBI Gene Entry: [3875](#)

UniProt Entry: [P05783](#)

## Application Information

Molecular Weight: Predicted, 48 kDa; observed, 44 kDa

Clonality: Rabbit monoclonal antibody

Clone ID: 23GB6500

Species Reactivity: Human

Applications Tested: Western blotting (WB), flow cytometry (FCM), immunocytochemistry (IC)

## Immunogen

A synthesized peptide derived from human Cytokeratin 18

## Isotype

Rabbit IgG

## Storage Buffer

Supplied in PBS (pH 7.4) containing 50% glycerol, and 0.02% sodium azide.

## Storage

Store at -20 °C for one year.

## Recommended Dilutions

Western Blotting (WB): 1:1,000-1:5,000

Flow Cytometry (FCM): 1:2,000

Immunocytochemistry (IC): 1:100-1:1,000

**Note:** This product is for research use only.

## Validation Data

---

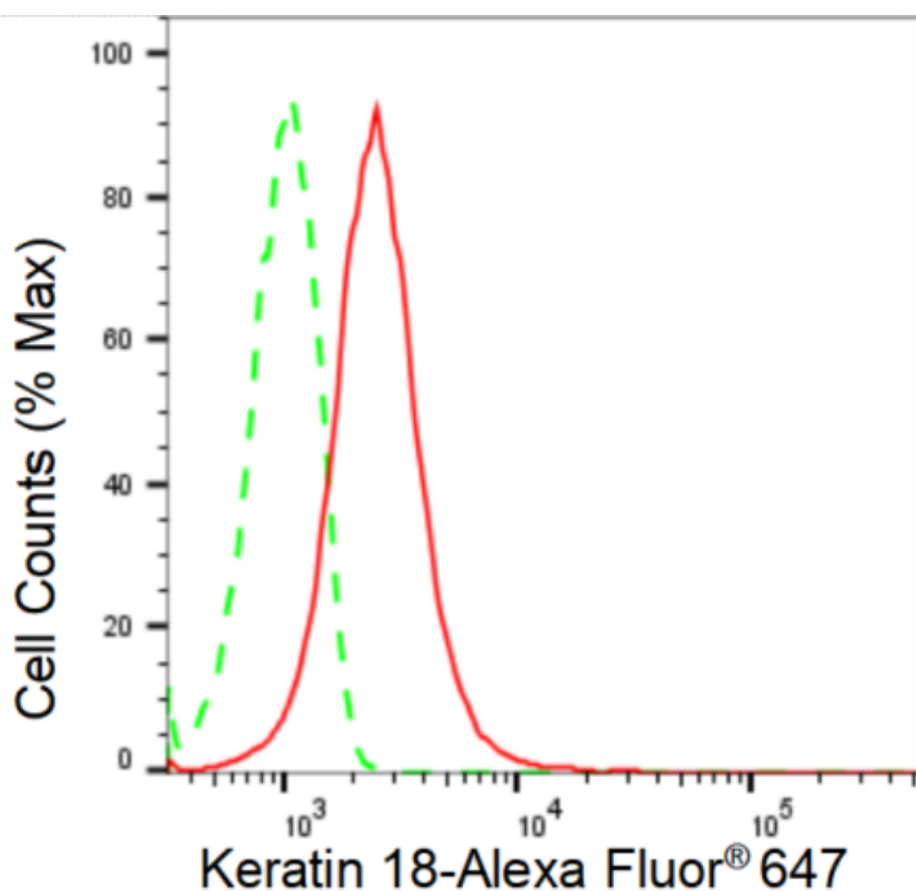
### SUPPORT

SUPPORT@GENUINBIOTECH.COM  
TEL: +1-540-855-7041

### ORDERS

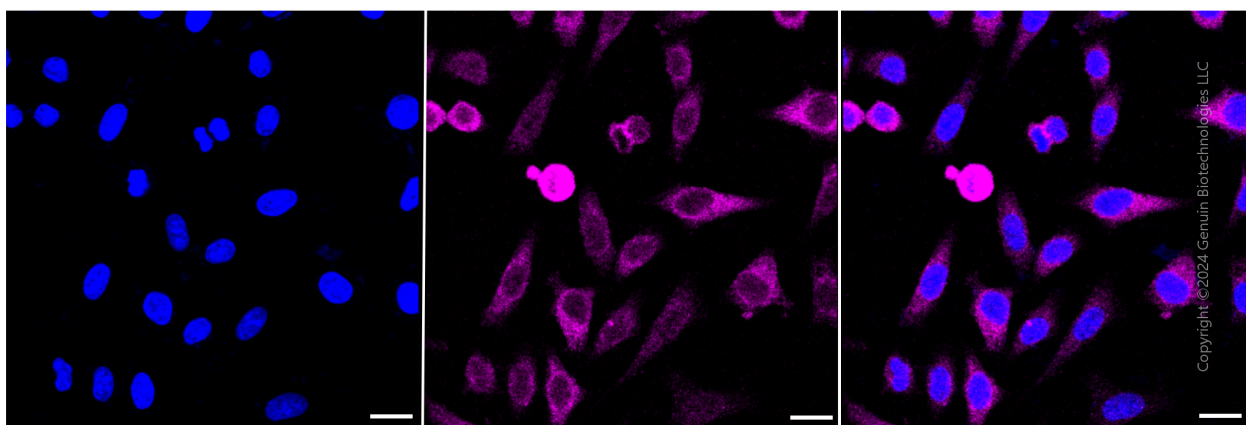
SALES@GENUINBIOTECH.COM  
FAX: +1-540-855-7041

[WWW.GENUINBIOTECH.COM](http://WWW.GENUINBIOTECH.COM)

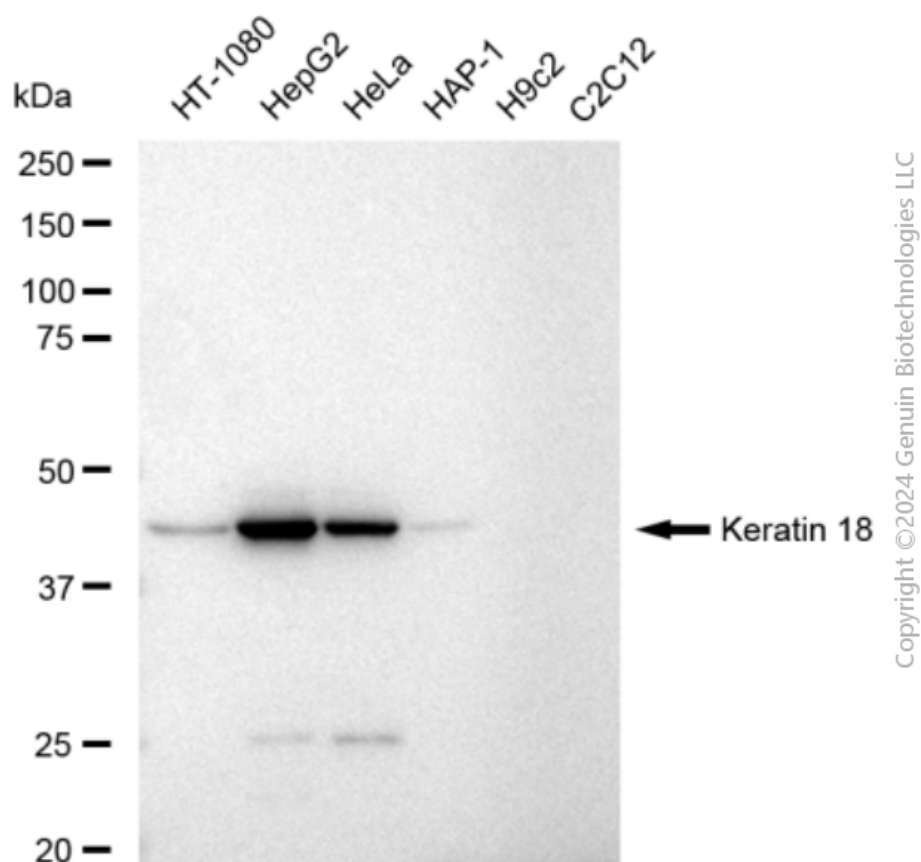


Copyright ©2024 Genuin Biotechnologies LLC

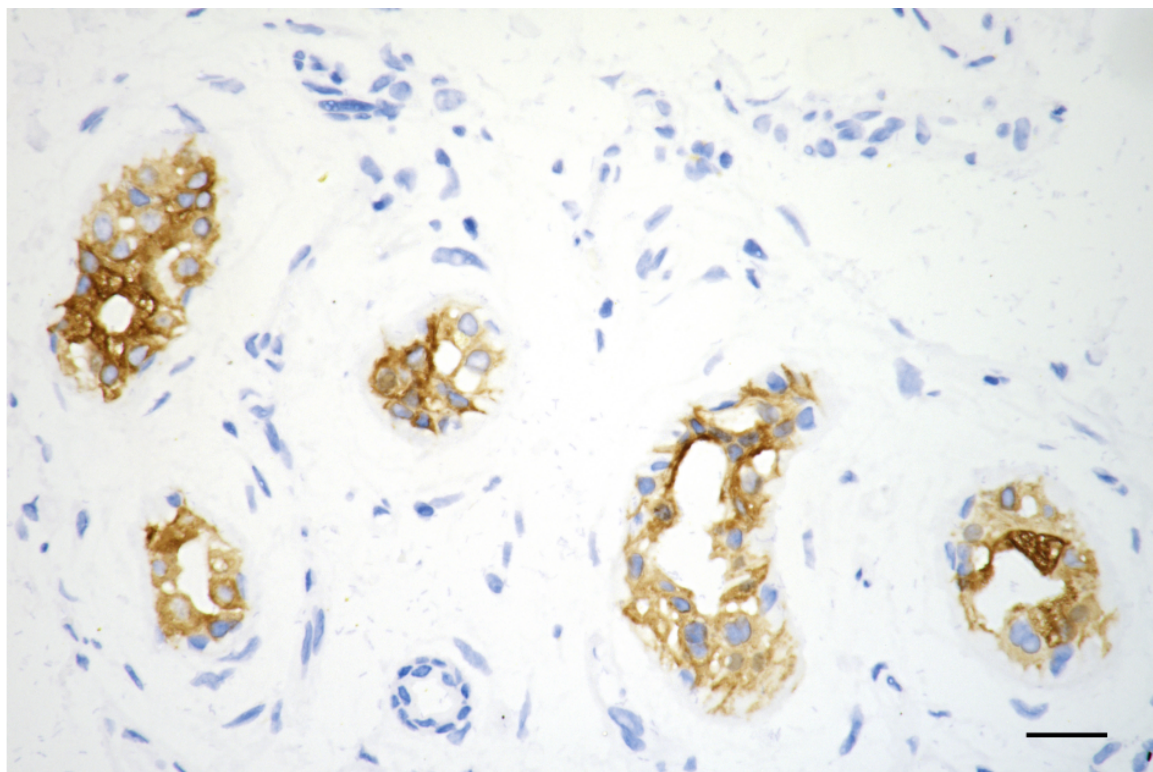
Flow cytometric analysis of Keratin 18 expression in HepG2 cells using Keratin 18 antibody (Cat#2205, 1:2,000). Green, isotype control; red, Keratin 18.



Immunocytochemical staining of HepG2 cells with anti-Keratin 18 antibody (Cat#2205, 1:1,000). Nuclei were stained blue with DAPI; Keratin 18 was stained magenta with Alexa Fluor® 647. Images were taken using Leica stellaris 5. Protein abundance based on laser Intensity and smart gain: Medium. Scale bar: 20  $\mu$ m.



Western blotting analysis using anti-Keratin 18 antibody (Cat#2205). Total cell lysates (30  $\mu$ g) from various cell lines were loaded and separated by SDS-PAGE. The blot was incubated with anti-Keratin 18 antibody (Cat#2205, 1:5,000) and HRP-conjugated goat anti-rabbit secondary antibody (Cat#201, 1:20,000) respectively. Image was developed using FeQ™ ECL Substrate Kit (Cat#226).



Copyright ©2025 Genuin Biotechnologies LLC

Immunohistochemistry was performed on paraffin-embedded human breast carcinoma using anti-glial fibrillary acidic protein antibody (Cat#2205, 1:200). Antigen retrieval was done in sodium citrate buffer (pH 6.0). DAB was used for detection, with hematoxylin counterstaining. Images were acquired using a Nikon Ci-L Plus microscope (40× objective). Scale bar: 25 µm.