

Anti-IL-33 Recombinant Rabbit Monoclonal Antibody



Catalog #: 2206

Aliases

IL33; Interleukin 33; NF-HEV; IL1F11; C9orf26; DVS27; Nuclear Factor From High Endothelial Venules; Nuclear Factor For High Endothelial Venules; Interleukin-1 Family Member 11; DVS27-Related Protein; Interleukin-33; DKFZp586H0523; Chromosome 9 Open Reading Frame 26 (NF-HEV); Interleukin-1 Family, Member 11; IL-1F11; NFEHEV; NFHEV; IL-33

Background

Gene Name: IL33

NCBI Gene Entry: [90865](#)

UniProt Entry: [O95760](#)

Application Information

Molecular Weight: Predicted, 31 kDa; observed, 33 kDa

Clonality: Rabbit monoclonal antibody

Clone ID: 23GB6505

Species Reactivity: Human, mouse, rat

Applications Tested: Western blotting (WB), immunocytochemistry (IC)

Immunogen

A synthesized peptide derived from mouse IL-33

Isotype

Rabbit IgG

Storage Buffer

Supplied in PBS (pH 7.4) containing 50% glycerol, and 0.02% sodium azide.

Storage

Store at -20 °C for one year.

Recommended Dilutions

Western Blotting (WB): 1:1,000-1:5,000

Immunocytochemistry (IC): 1:100-1:1,000

Note: This product is for research use only.

SUPPORT

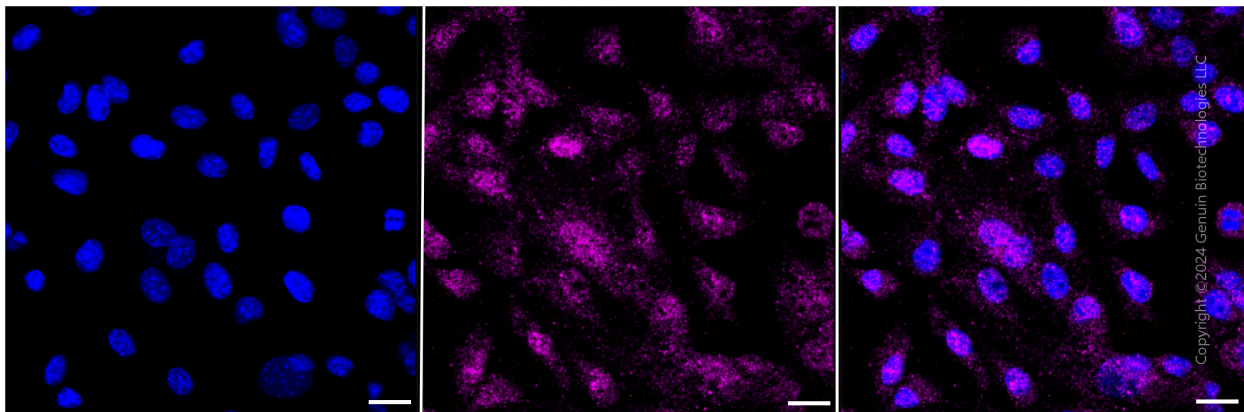
SUPPORT@GENUINBIOTECH.COM
TEL: +1-540-855-7041

ORDERS

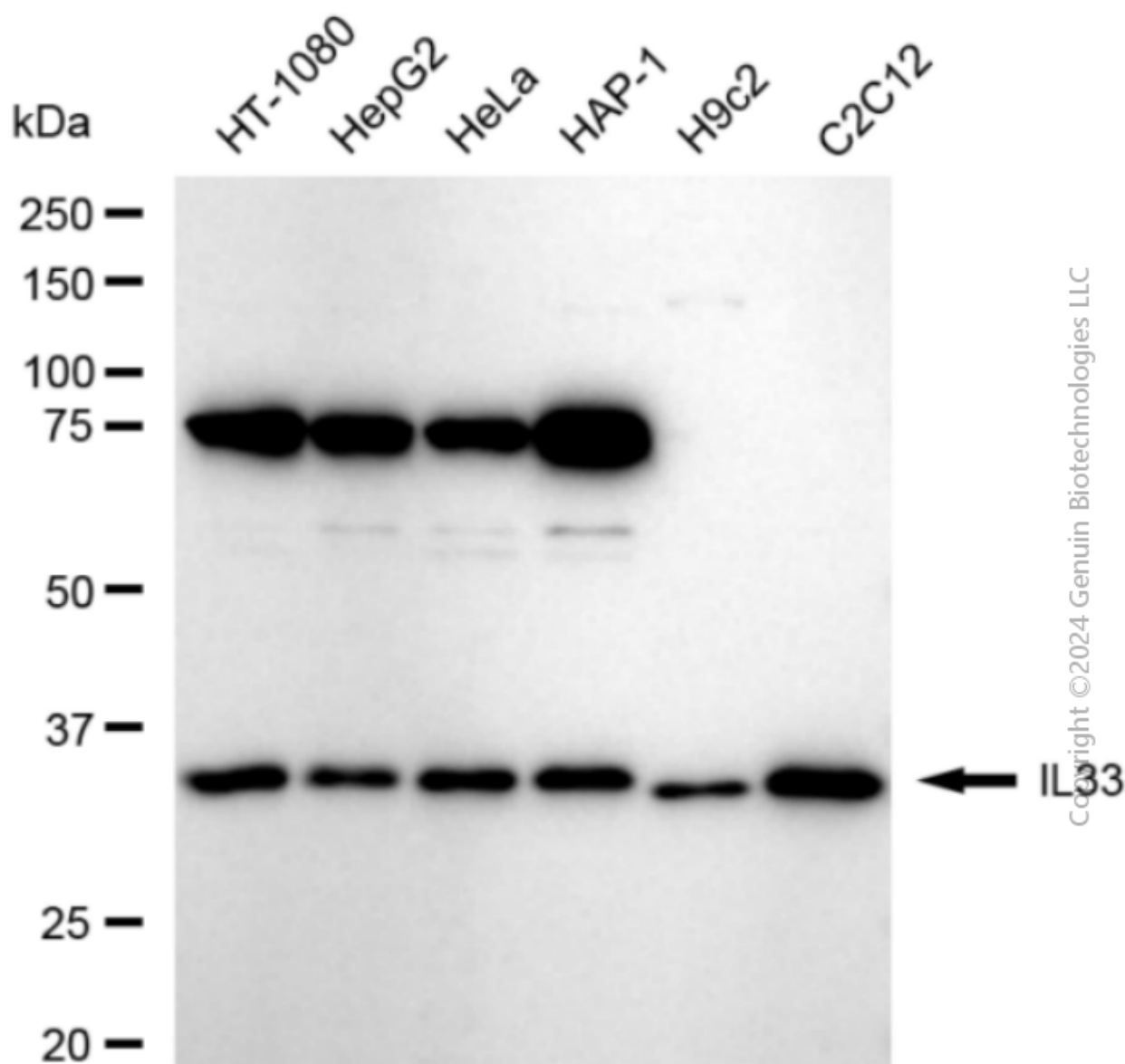
SALES@GENUINBIOTECH.COM
FAX: +1-540-855-7041

WWW.GENUINBIOTECH.COM

Validation Data



Immunocytochemical staining of C2C12 cells with anti-IL33 antibody (Cat#2206, 1:1,000). Nuclei were stained blue with DAPI; IL33 was stained magenta with Alexa Fluor® 647. Images were taken using Leica stellaris 5. Protein abundance based on laser Intensity and smart gain: Low. Scale bar: 20 μ m.



Western blotting analysis using anti-IL33 antibody (Cat#2206). Total cell lysates (30 µg) from various cell lines were loaded and separated by SDS-PAGE. The blot was incubated with anti-IL33 antibody (Cat#2206, 1:5,000) and HRP-conjugated goat anti-rabbit secondary antibody (Cat#201, 1:20,000) respectively. Image was developed using FeQ™ ECL Substrate Kit (Cat#226).