

Anti-MHC class 1 Recombinant Rabbit Monoclonal Antibody



Catalog #: 2208

Aliases

HLA-A; Major Histocompatibility Complex, Class I, A; HLA Class I Histocompatibility Antigen, A Alpha Chain; HLAA; HLA Class I Histocompatibility Antigen, A-1 Alpha Chain; MHC Class I Antigen HLA-A Heavy Chain; Leukocyte Antigen Class I-A; Human Leukocyte Antigen A

Background

Gene Name: HLA-A

NCBI Gene Entry: [3105](#)

UniProt Entry: [P04439](#)

Application Information

Molecular Weight: Predicted, 41 kDa; observed, 41 kDa

Clonality: Rabbit monoclonal antibody

Clone ID: 23GB6515

Species Reactivity: Human

Applications Tested: Western blotting (WB), flow cytometry (FCM)

Immunogen

A synthesized peptide derived from human MHC class 1

Isotype

Rabbit IgG

Storage Buffer

Supplied in PBS (pH 7.4) containing 50% glycerol, and 0.02% sodium azide.

Storage

Store at -20 °C for one year.

Recommended Dilutions

Western Blotting (WB): 1:1,000-1:5,000

Flow Cytometry (FCM): 1:2,000

Note: This product is for research use only.

Validation Data

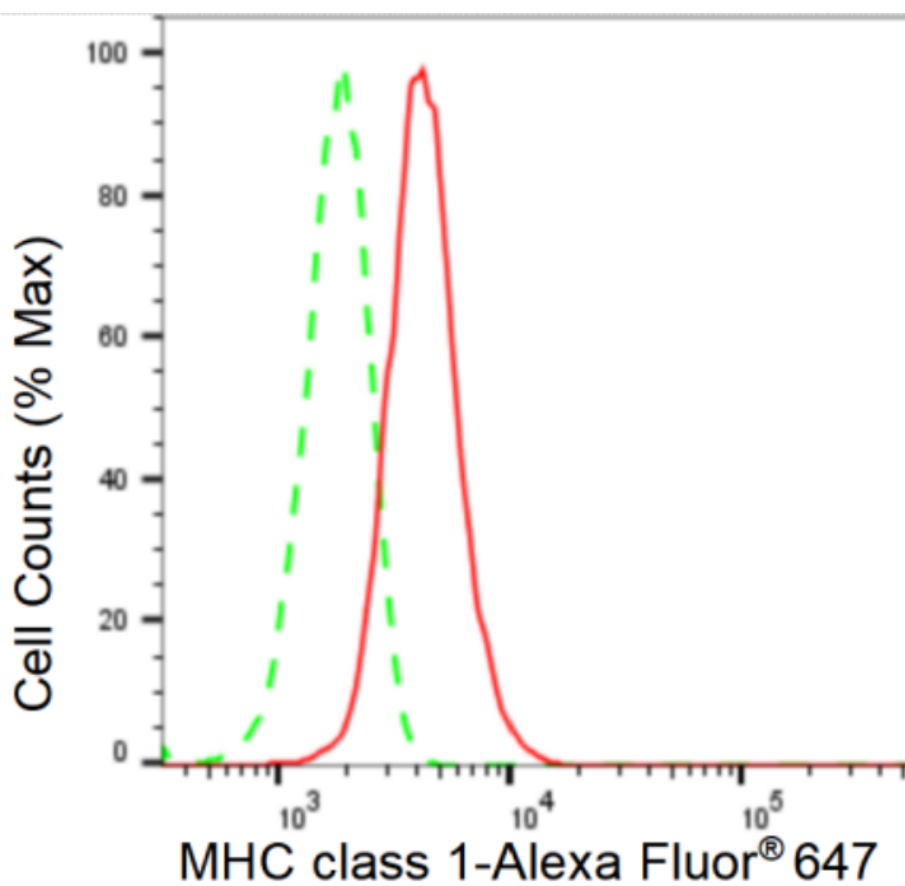
SUPPORT

SUPPORT@GENUINBIOTECH.COM
TEL: +1-540-855-7041

ORDERS

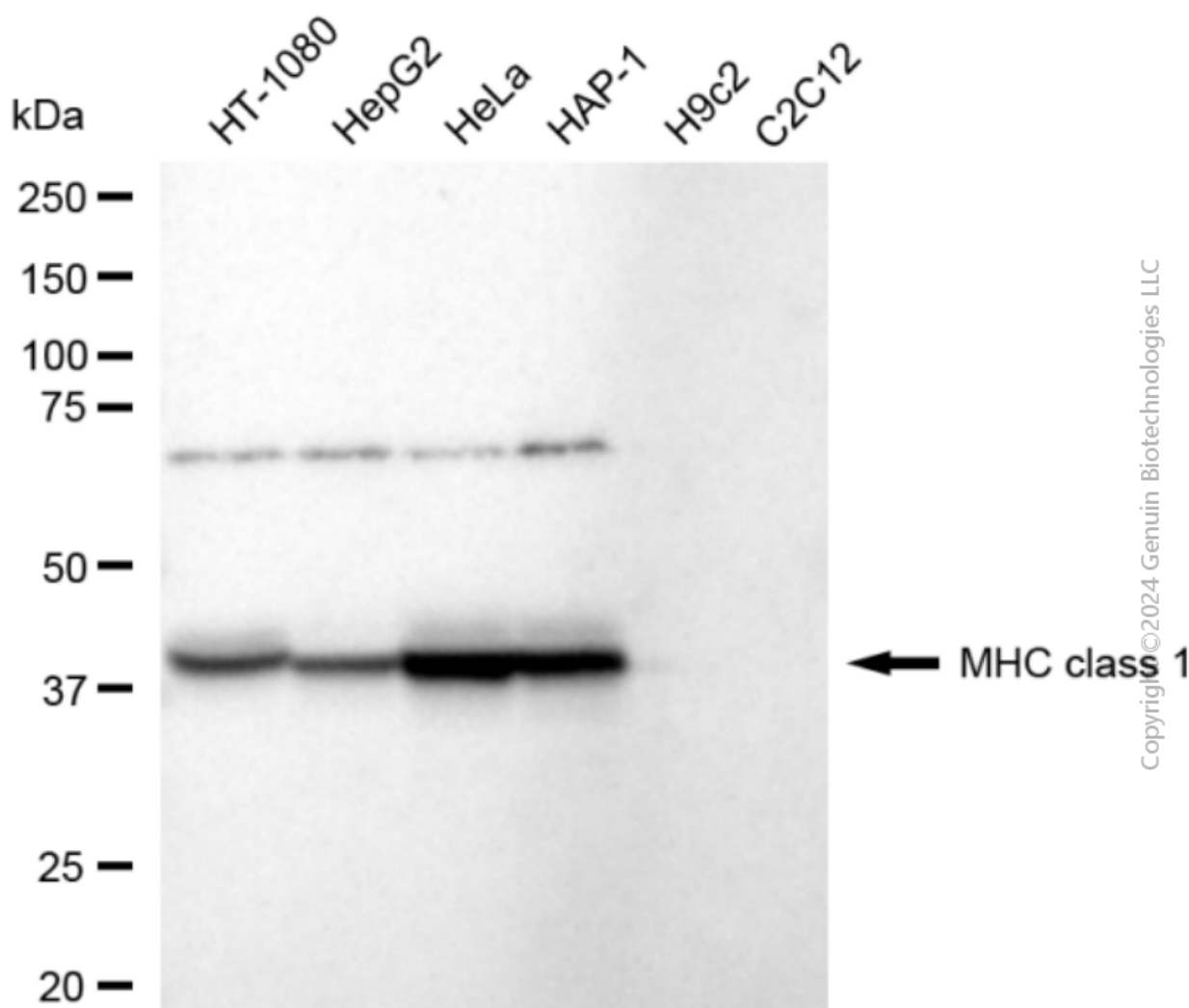
SALES@GENUINBIOTECH.COM
FAX: +1-540-855-7041

WWW.GENUINBIOTECH.COM



Copyright ©2024 Genuin Biotechnologies LLC

Flow cytometric analysis of MHC class 1 expression in HeLa cells using MHC class 1 antibody (Cat#2208, 1:2,000). Green, isotype control; red, MHC class 1.



Western blotting analysis using anti-MHC class 1 antibody (Cat#2208). Total cell lysates (30 μ g) from various cell lines were loaded and separated by SDS-PAGE. The blot was incubated with anti-MHC class 1 antibody (Cat#2208, 1:5,000) and HRP-conjugated goat anti-rabbit secondary antibody (Cat#201, 1:20,000) respectively. Image was developed using FeQ™ ECL Substrate Kit (Cat#226).