

Anti-HAPLN1 Recombinant Rabbit Monoclonal Antibody



Catalog #: 2209

Aliases

HAPLN1; Hyaluronan And Proteoglycan Link Protein 1; CRTL1; Cartilage-Linking Protein 1; Proteoglycan Link Protein; Cartilage Link Protein; Cartilage-Link Protein; Cartilage Linking Protein 1; CRT1

Background

Gene Name: HAPLN1

NCBI Gene Entry: [1404](#)

UniProt Entry: [P10915](#)

Application Information

Molecular Weight: Predicted, 40 kDa; observed, 48 kDa

Clonality: Rabbit monoclonal antibody

Clone ID: 23GB6520

Species Reactivity: Human, mouse, rat

Applications Tested: Western blotting (WB), flow cytometry (FCM), immunocytochemistry (IC)

Immunogen

A synthesized peptide derived from human HAPLN1

Isotype

Rabbit IgG

Storage Buffer

Supplied in PBS (pH 7.4) containing 50% glycerol, and 0.02% sodium azide.

Storage

Store at -20 °C for one year.

Recommended Dilutions

Western Blotting (WB): 1:1,000-1:5,000

Flow Cytometry (FCM): 1:2,000

Immunocytochemistry (IC): 1:100-1:1,000

Note: This product is for research use only.

SUPPORT

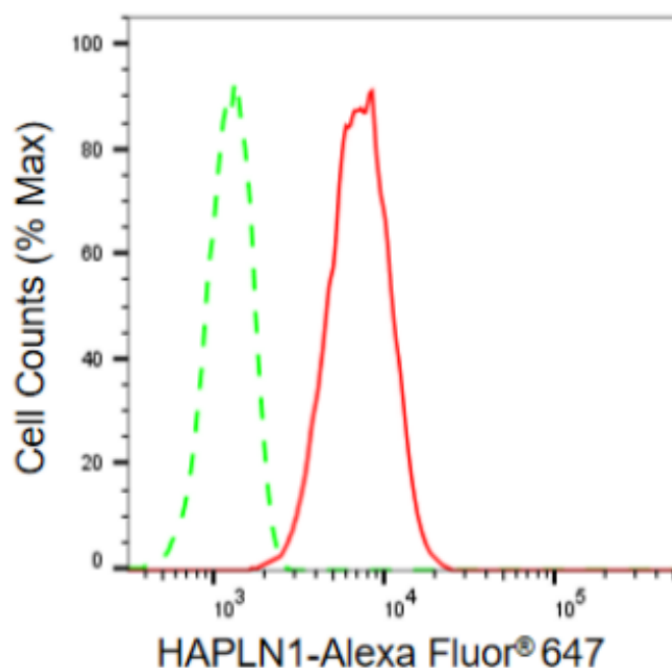
SUPPORT@GENUINBIOTECH.COM
TEL: +1-540-855-7041

ORDERS

SALES@GENUINBIOTECH.COM
FAX: +1-540-855-7041

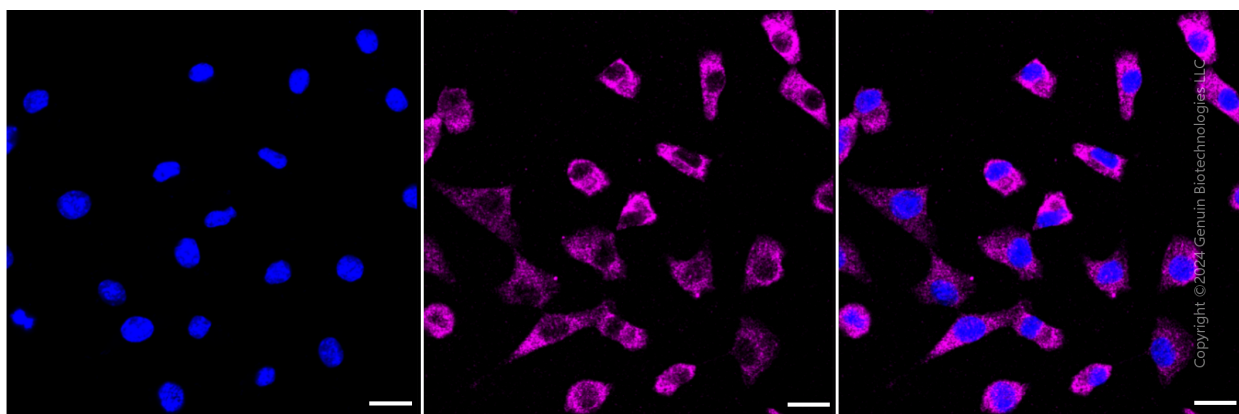
WWW.GENUINBIOTECH.COM

Validation Data



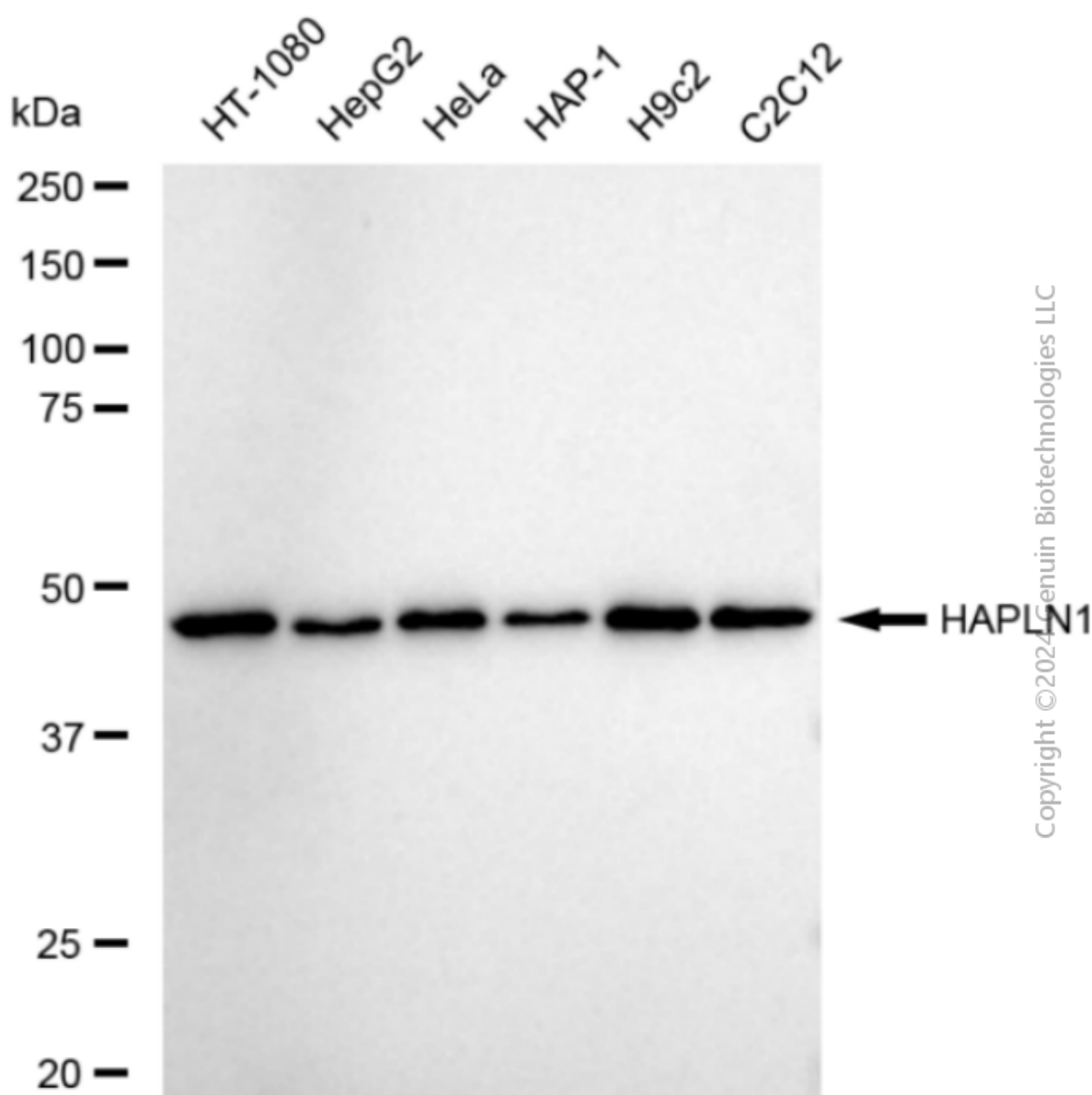
Copyright ©2024 Genuin Biotechnologies LLC

Flow cytometric analysis of HAPLN1 expression in C2C12 cells using HAPLN1 antibody (Cat#2209, 1:2,000). Green, isotype control; red, HAPLN1.



Copyright ©2024 Genuin Biotechnologies LLC

Immunocytochemical staining of HeLa cells with anti-HAPLN1 antibody (Cat#2209, 1:1,000). Nuclei were stained blue with DAPI; HAPLN1 was stained magenta with Alexa Fluor® 647. Images were taken using Leica stellaris 5. Protein abundance based on laser Intensity and smart gain: Medium. Scale bar: 20 μm.



Copyright © 2024 Genuin Biotechnologies LLC

Western blotting analysis using anti-HAPLN1 antibody (Cat#2209). Total cell lysates (30 μ g) from various cell lines were loaded and separated by SDS-PAGE. The blot was incubated with anti-HAPLN1 antibody (Cat#2209, 1:5,000) and HRP-conjugated goat anti-rabbit secondary antibody (Cat#201, 1:20,000) respectively. Image was developed using FeQ™ ECL Substrate Kit (Cat#226).

SUPPORT

SUPPORT@GENUINBIOTECH.COM
TEL: +1-540-855-7041

ORDERS

SALES@GENUINBIOTECH.COM
FAX: +1-540-855-7041

WWW.GENUINBIOTECH.COM