

# Anti-Interferon regulatory factor 6 Recombinant Rabbit Monoclonal Antibody



**Catalog #: 2215**

## Aliases

IRF6; Interferon Regulatory Factor 6; OFC6; VWS1; LPS; VWS; Van Der Woude Syndrome; IRF-6; PPS1; PIT; PPS

## Background

Gene Name: IRF6

NCBI Gene Entry: [3664](#)

UniProt Entry: [O14896](#)

## Application Information

Molecular Weight: Predicted, 53 kDa; observed, 60 kDa

Clonality: Rabbit monoclonal antibody

Clone ID: 23GB6550

Species Reactivity: Human, mouse, rat

Applications Tested: Western blotting (WB), flow cytometry (FCM)

## Immunogen

A synthesized peptide derived from human IRF6

## Isotype

Rabbit IgG

## Storage Buffer

Supplied in PBS (pH 7.4) containing 50% glycerol, and 0.02% sodium azide.

## Storage

Store at -20 °C for one year.

## Recommended Dilutions

Western Blotting (WB): 1:1,000-1:5,000

Flow Cytometry (FCM): 1:2,000

**Note:** This product is for research use only.

## Validation Data

---

### SUPPORT

SUPPORT@GENUINBIOTECH.COM  
TEL: +1-540-855-7041

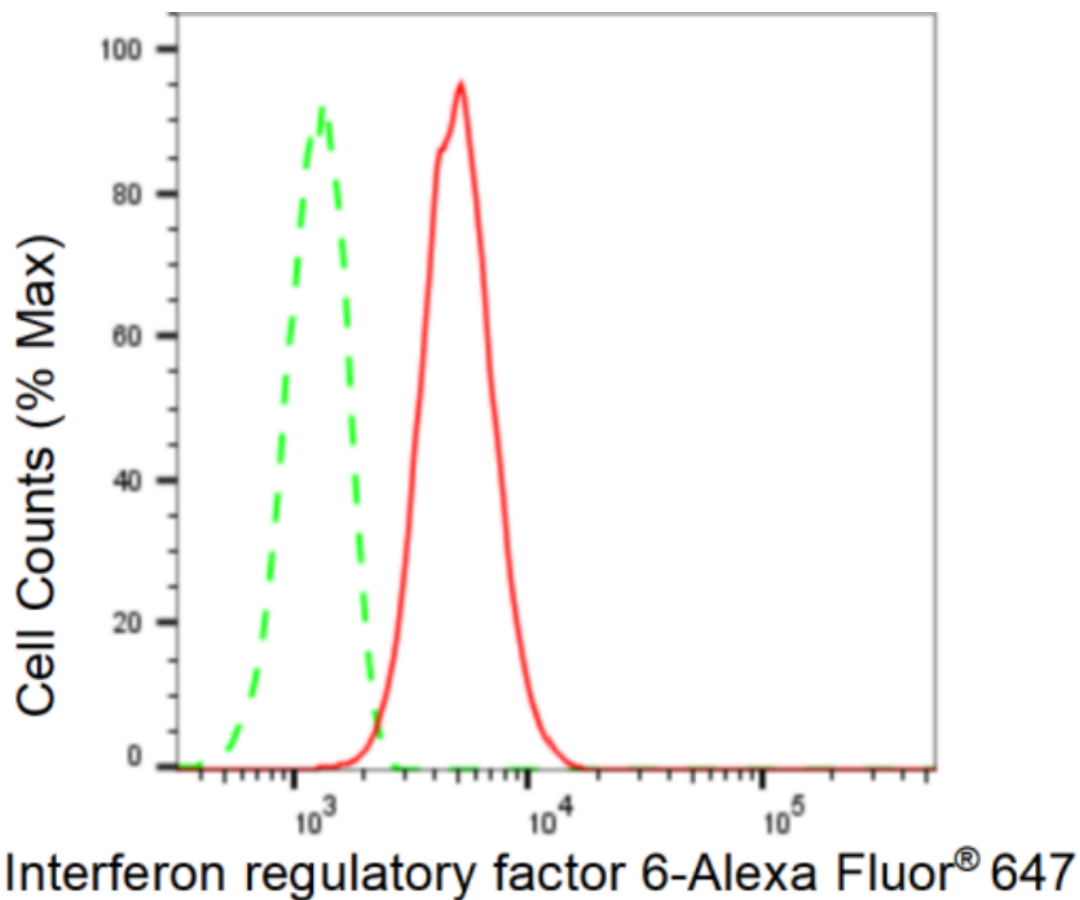
### ORDERS

SALES@GENUINBIOTECH.COM  
FAX: +1-540-855-7041

[WWW.GENUINBIOTECH.COM](http://WWW.GENUINBIOTECH.COM)

## Anti-Interferon regulatory factor 6 Recombinant Rabbit Monoclonal Antibody

PAGE 2



Copyright ©2024 Genuin Biotechnologies LLC

Flow cytometric analysis of Interferon regulatory factor 6 expression in C2C12 cells using Interferon regulatory factor 6 antibody (Cat#2215, 1:2,000). Green, isotype control; red, Interferon regulatory factor 6.

### SUPPORT

SUPPORT@GENUINBIOTECH.COM  
TEL: +1-540-855-7041

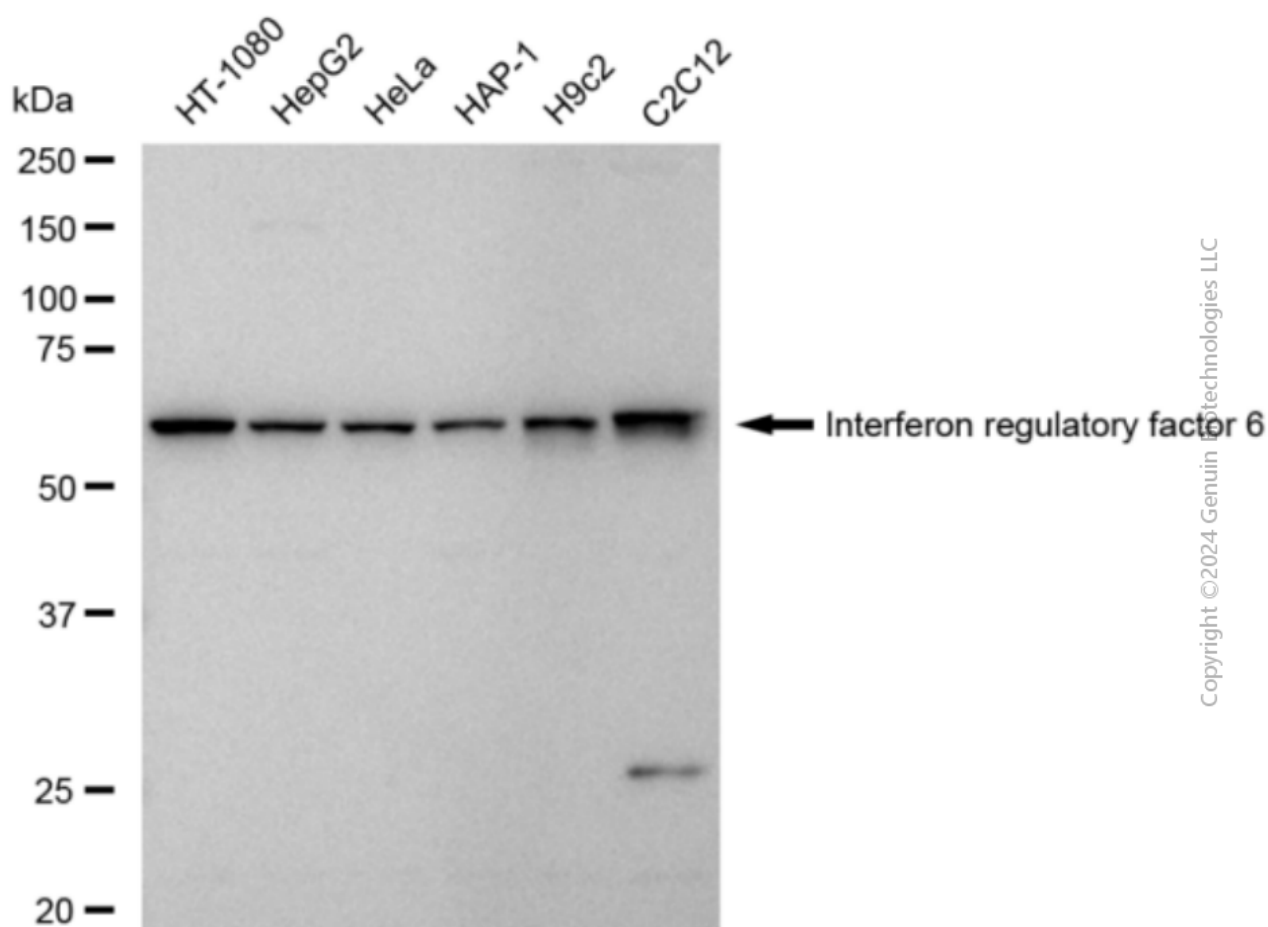
### ORDERS

SALES@GENUINBIOTECH.COM  
FAX: +1-540-855-7041

[WWW.GENUINBIOTECH.COM](http://WWW.GENUINBIOTECH.COM)

## Anti-Interferon regulatory factor 6 Recombinant Rabbit Monoclonal Antibody

PAGE 3



Copyright ©2024 Genuin Biotechnologies LLC

Western blotting analysis using anti-Interferon regulatory factor 6 antibody (Cat#2215). Total cell lysates (30 µg) from various cell lines were loaded and separated by SDS-PAGE. The blot was incubated with anti-Interferon regulatory factor 6 antibody (Cat#2215, 1:5,000) and HRP-conjugated goat anti-rabbit secondary antibody (Cat#201, 1:20,000) respectively. Image was developed using FeQ™ ECL Substrate Kit (Cat#226).

### SUPPORT

SUPPORT@GENUINBIOTECH.COM  
TEL: +1-540-855-7041

### ORDERS

SALES@GENUINBIOTECH.COM  
FAX: +1-540-855-7041

[WWW.GENUINBIOTECH.COM](http://WWW.GENUINBIOTECH.COM)