

Anti-Homer scaffold protein 1 Recombinant Rabbit Monoclonal Antibody



Catalog #: 2226

Aliases

HOMER1; Homer Scaffold Protein 1; SYN47; Ves-1; Homer Scaffolding Protein 1; Homer Protein Homolog 1; HOMER-1B; Homer-1; Homer, Neuronal Immediate Early Gene, 1; Homer Homolog 1 (Drosophila); Homer Homolog 1; HOMER1A; HOMER1B; HOMER1C; HOMER

Background

Gene Name: HOMER1

NCBI Gene Entry: [9456](#)

UniProt Entry: [Q86YM7](#)

Application Information

Molecular Weight: Predicted, 40 kDa; observed, 45 kDa

Clonality: Rabbit monoclonal antibody

Clone ID: 23GB6590

Species Reactivity: Human, mouse, rat

Applications Tested: Western blotting (WB), flow cytometry (FCM)

Immunogen

A synthesized peptide derived from human Homer1

Isotype

Rabbit IgG

Storage Buffer

Supplied in PBS (pH 7.4) containing 50% glycerol, and 0.02% sodium azide.

Storage

Store at -20 °C for one year.

Recommended Dilutions

Western Blotting (WB): 1:1,000-1:5,000

Flow Cytometry (FCM): 1:2,000

Note: This product is for research use only.

Validation Data

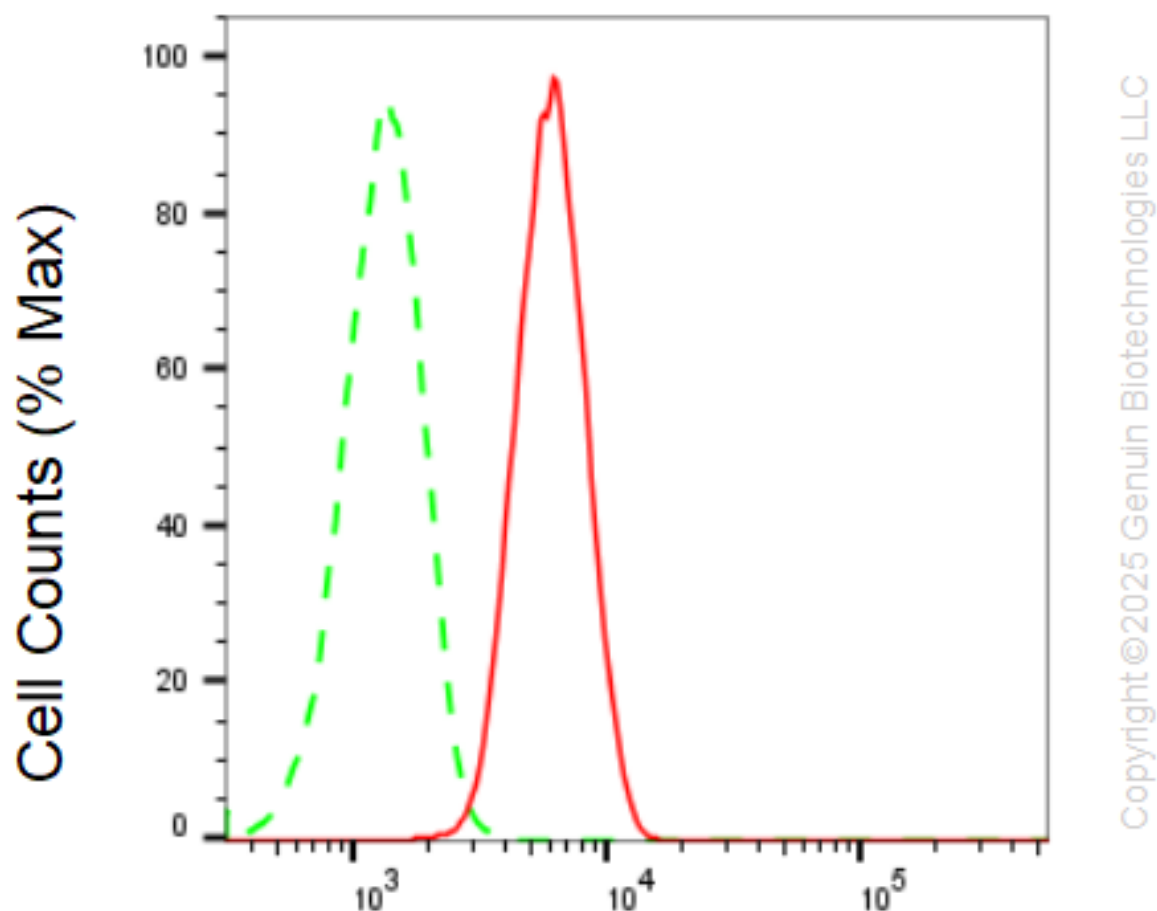
SUPPORT

SUPPORT@GENUINBIOTECH.COM
TEL: +1-540-855-7041

ORDERS

SALES@GENUINBIOTECH.COM
FAX: +1-540-855-7041

WWW.GENUINBIOTECH.COM



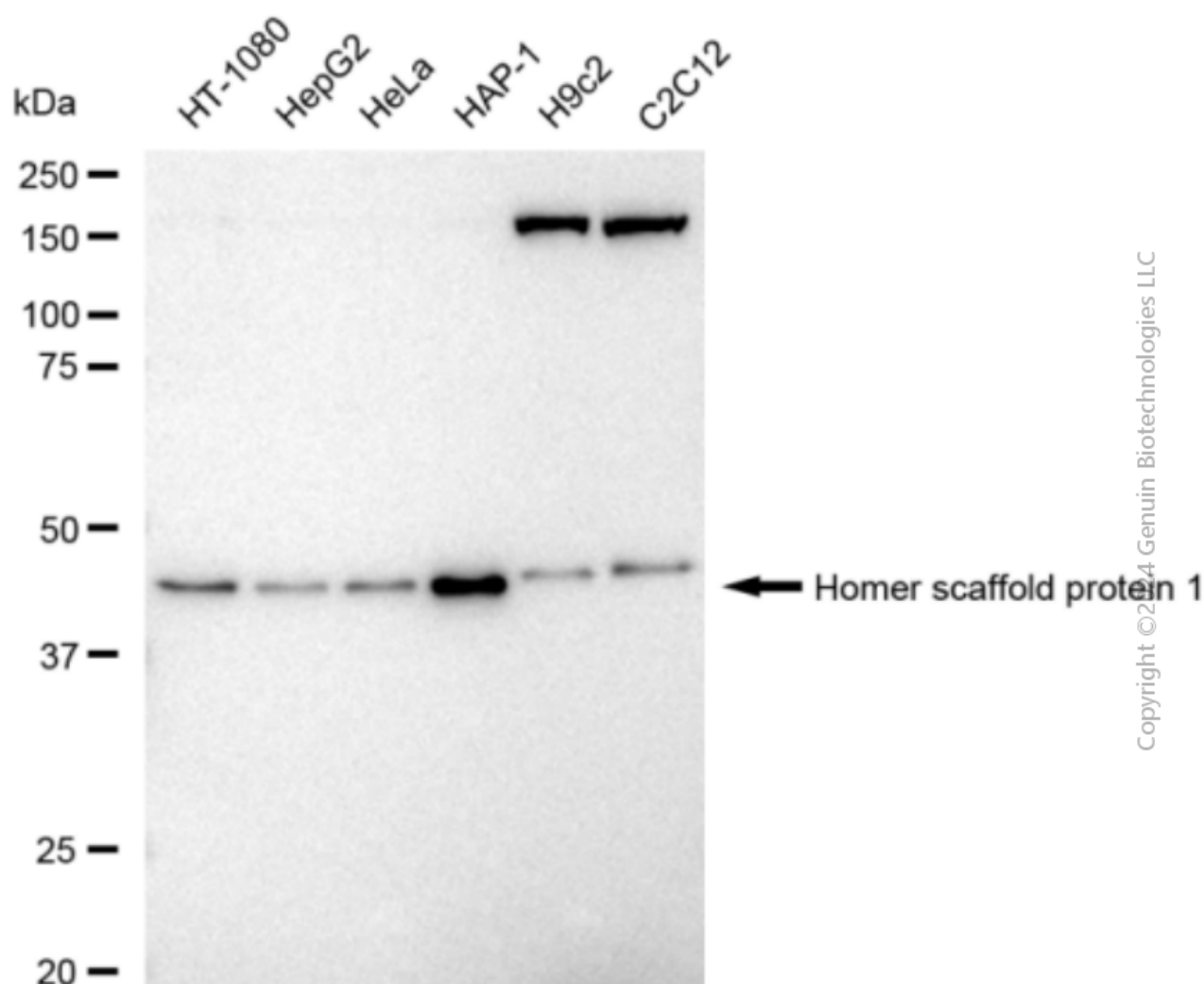
Copyright ©2025 Genuin Biotechnologies LLC

Homer scaffold protein 1-Alexa Fluor[®] 647

Flow cytometric analysis of Homer scaffold protein 1 expression in HAP-1 cells using anti-Homer scaffold protein 1 antibody (Cat#2226, 1:2,000). Green, isotype control; red, Homer scaffold protein 1.

Anti-Homer scaffold protein 1 Recombinant Rabbit Monoclonal Antibody

PAGE 3



Copyright ©2014 Genuin Biotechnologies LLC

Western blotting analysis using anti-Homer scaffold protein 1 antibody (Cat#2226). Total cell lysates (30 μ g) from various cell lines were loaded and separated by SDS-PAGE. The blot was incubated with anti-Homer scaffold protein 1 antibody (Cat#2226, 1:5,000) and HRP-conjugated goat anti-rabbit secondary antibody (Cat#201, 1:20,000) respectively. Image was developed using FeQ™ ECL Substrate Kit (Cat#226).

SUPPORT

SUPPORT@GENUINBIOTECH.COM
TEL: +1-540-855-7041

ORDERS

SALES@GENUINBIOTECH.COM
FAX: +1-540-855-7041

WWW.GENUINBIOTECH.COM