

Anti-IGFBP7 Recombinant Rabbit Monoclonal Antibody



Catalog #: 2228

Aliases

IGFBP7; Insulin Like Growth Factor Binding Protein 7; IGFBP-7; MAC25; PSF; FSTL2; Insulin-Like Growth Factor-Binding Protein 7; Prostacyclin-Stimulating Factor; Tumor-Derived Adhesion Factor; PGI2-Stimulating Factor; IGF-Binding Protein 7; IGFBP-RP1; IBP-7; TAF; Insulin-Like Growth Factor Binding Protein 7; MAC25 Protein; Angiomodulin; IGFBP-7v; IGFBPRP1; RAMSVPS; AGM

Background

Gene Name: IGFBP7

NCBI Gene Entry: [3490](#)

UniProt Entry: [Q16270](#)

Application Information

Molecular Weight: Predicted, 29 kDa; observed, 29 kDa

Clonality: Rabbit monoclonal antibody

Clone ID: 23GB6600

Species Reactivity: Human, rat

Applications Tested: Western blotting (WB), flow cytometry (FCM), immunocytochemistry (IC)

Immunogen

A synthesized peptide derived from human IGFBP7

Isotype

Rabbit IgG

Storage Buffer

Supplied in PBS (pH 7.4) containing 50% glycerol, and 0.02% sodium azide.

Storage

Store at -20 °C for one year.

Recommended Dilutions

Western Blotting (WB): 1:1,000-1:5,000

Flow Cytometry (FCM): 1:2,000

Immunocytochemistry (IC): 1:100-1:1,000

SUPPORT

SUPPORT@GENUINBIOTECH.COM
TEL: +1-540-855-7041

ORDERS

SALES@GENUINBIOTECH.COM
FAX: +1-540-855-7041

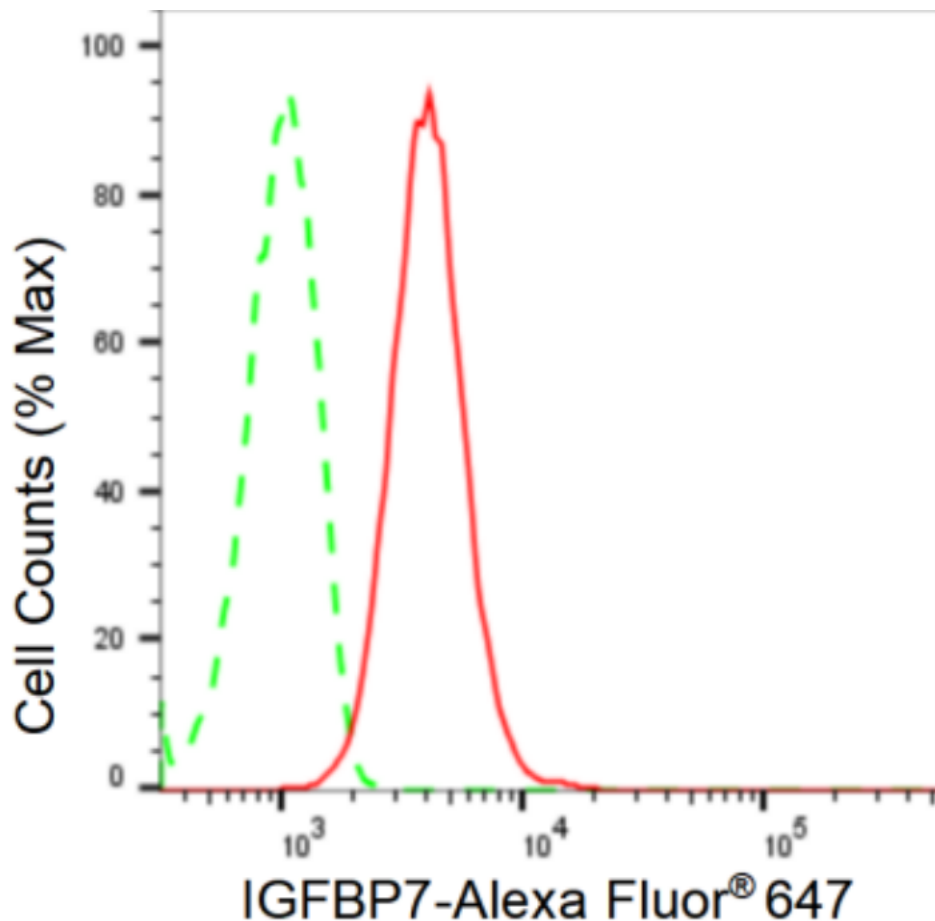
WWW.GENUINBIOTECH.COM

Anti-IGFBP7 Recombinant Rabbit Monoclonal Antibody

PAGE 2

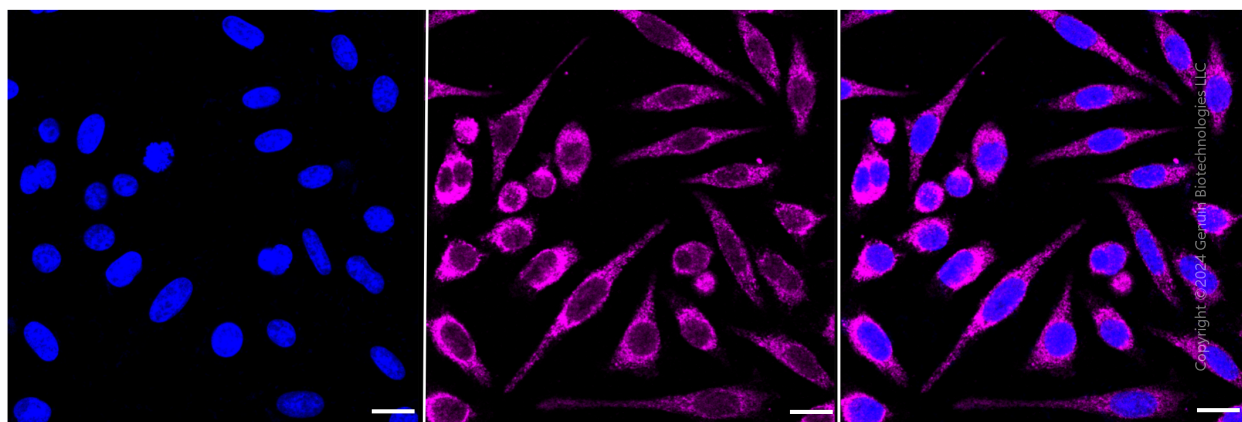
Note: This product is for research use only.

Validation Data



Copyright ©2024 Genuin Biotechnologies LLC

Flow cytometric analysis of IGFBP7 expression in HepG2 cells using IGFBP7 antibody (Cat#2228, 1:2,000). Green, isotype control; red, IGFBP7.



Copyright ©2024 Genuin Biotechnologies LLC

Immunocytochemical staining of HepG2 cells with anti-IGFBP7 antibody (Cat#2228, 1:1,000). Nuclei were stained blue with DAPI; IGFBP7 was stained magenta with Alexa Fluor® 647.

SUPPORT

SUPPORT@GENUINBIOTECH.COM
TEL: +1-540-855-7041

ORDERS

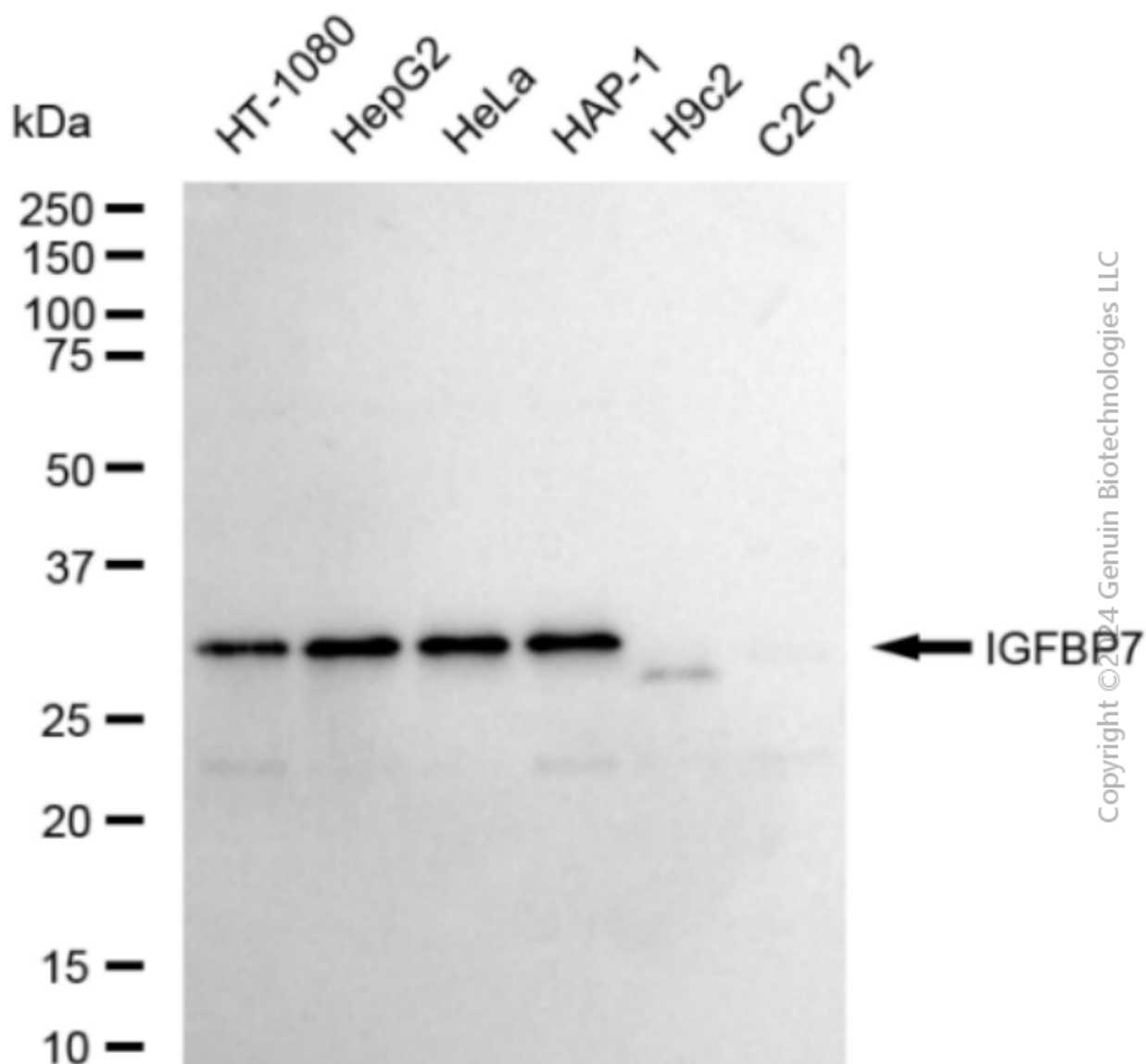
SALES@GENUINBIOTECH.COM
FAX: +1-540-855-7041

WWW.GENUINBIOTECH.COM

Anti-IGFBP7 Recombinant Rabbit Monoclonal Antibody

PAGE 3

Images were taken using Leica stellaris 5. Protein abundance based on laser Intensity and smart gain: Medium. Scale bar: 20 μ m.



Western blotting analysis using anti-IGFBP7 antibody (Cat#2228). Total cell lysates (30 μ g) from various cell lines were loaded and separated by SDS-PAGE. The blot was incubated with anti-IGFBP7 antibody (Cat#2228, 1:5,000) and HRP-conjugated goat anti-rabbit secondary antibody (Cat#201, 1:20,000) respectively. Image was developed using FeQ™ ECL Substrate Kit (Cat#226).

SUPPORT

SUPPORT@GENUINBIOTECH.COM
TEL: +1-540-855-7041

ORDERS

SALES@GENUINBIOTECH.COM
FAX: +1-540-855-7041

WWW.GENUINBIOTECH.COM