

# Anti-KLF10 Recombinant Rabbit Monoclonal Antibody



**Catalog #: 2229**

## Aliases

KLF10; KLF Transcription Factor 10; TIEG1; EGRA; TIEG; Transforming Growth Factor-Beta-Inducible Early Growth Response Protein 1; TGFB-Inducible Early Growth Response Protein 1; Krueppel-Like Factor 10; Kruppel Like Factor 10; EGR-Alpha; Zinc Finger Transcription Factor TIEG; TGFB Inducible Early Growth Response; Early Growth Response Alpha; Early Growth Response-Alpha; TIEG-1

## Background

Gene Name: KLF10

NCBI Gene Entry: [7071](#)

UniProt Entry: [Q13118](#)

## Application Information

Molecular Weight: Predicted, 53 kDa; observed, 53 kDa

Clonality: Rabbit monoclonal antibody

Clone ID: 23GB6605

Species Reactivity: Human, mouse, rat

Applications Tested: Western blotting (WB)

## Immunogen

A synthesized peptide derived from human KLF10

## Isotype

Rabbit IgG

## Storage Buffer

Supplied in PBS (pH 7.4) containing 50% glycerol, and 0.02% sodium azide.

## Storage

Store at -20 °C for one year.

## Recommended Dilutions

Western Blotting (WB): 1:1,000-1:5,000

**Note:** This product is for research use only.

---

### SUPPORT

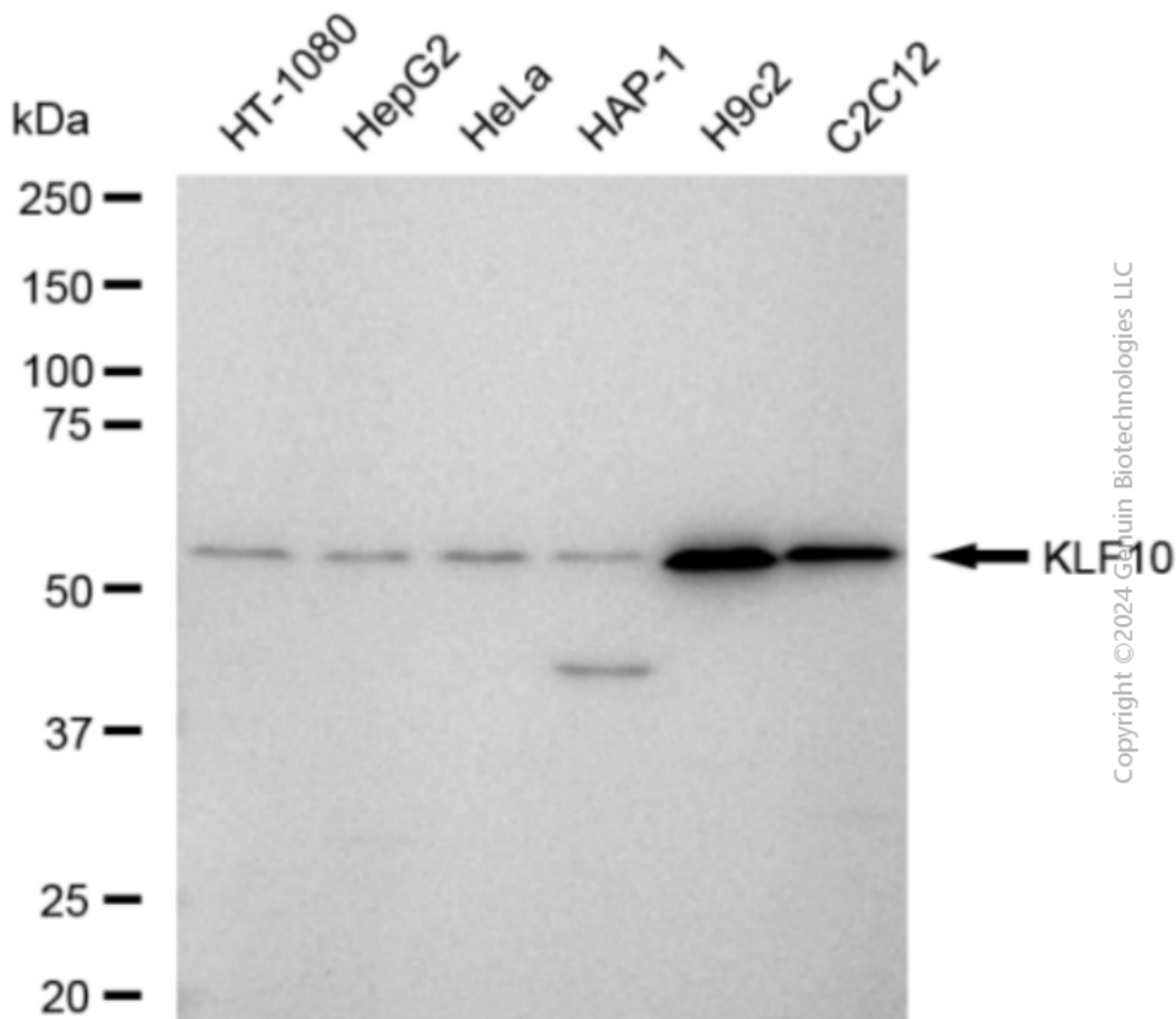
SUPPORT@GENUINBIOTECH.COM  
TEL: +1-540-855-7041

### ORDERS

SALES@GENUINBIOTECH.COM  
FAX: +1-540-855-7041

[WWW.GENUINBIOTECH.COM](http://WWW.GENUINBIOTECH.COM)

## Validation Data



Western blotting analysis using anti-KLF10 antibody (Cat#2229). Total cell lysates (30  $\mu$ g) from various cell lines were loaded and separated by SDS-PAGE. The blot was incubated with anti-KLF10 antibody (Cat#2229, 1:5,000) and HRP-conjugated goat anti-rabbit secondary antibody (Cat#201, 1:20,000) respectively. Image was developed using FeQ™ ECL Substrate Kit (Cat#226).