

Anti-Inhibin subunit beta B Recombinant Rabbit Monoclonal Antibody



Catalog #: 2234

Aliases

INHBB; Inhibin Subunit Beta B; Inhibin Beta B Chain; Activin Beta-B Chain; Inhibin, Beta B (Activin AB Beta Polypeptide); Activin AB Beta Polypeptide; Inhibin Beta B Subunit; Inhibin, Beta B; Inhibin, Beta-2

Background

Gene Name: INHBB

NCBI Gene Entry: [3625](#)

UniProt Entry: [P09529](#)

Application Information

Molecular Weight: Predicted, 45 kDa; observed, 52 kDa

Clonality: Rabbit monoclonal antibody

Clone ID: 23GB6625

Species Reactivity: Human, mouse, rat

Applications Tested: Western blotting (WB), flow cytometry (FCM)

Immunogen

A synthesized peptide derived from human Inhibin beta B

Isotype

Rabbit IgG

Storage Buffer

Supplied in PBS (pH 7.4) containing 50% glycerol, and 0.02% sodium azide.

Storage

Store at -20 °C for one year.

Recommended Dilutions

Western Blotting (WB): 1:1,000-1:5,000

Flow Cytometry (FCM): 1:2,000

Note: This product is for research use only.

Validation Data

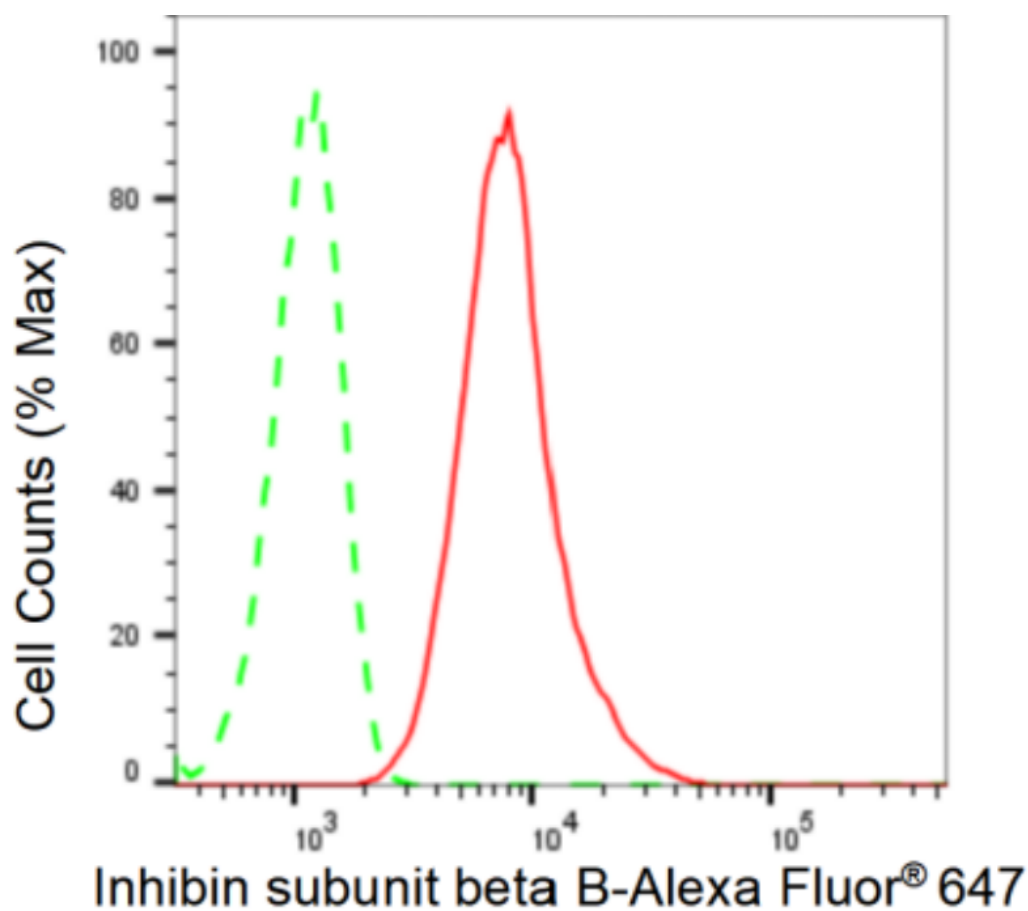
SUPPORT

SUPPORT@GENUINBIOTECH.COM
TEL: +1-540-855-7041

ORDERS

SALES@GENUINBIOTECH.COM
FAX: +1-540-855-7041

WWW.GENUINBIOTECH.COM

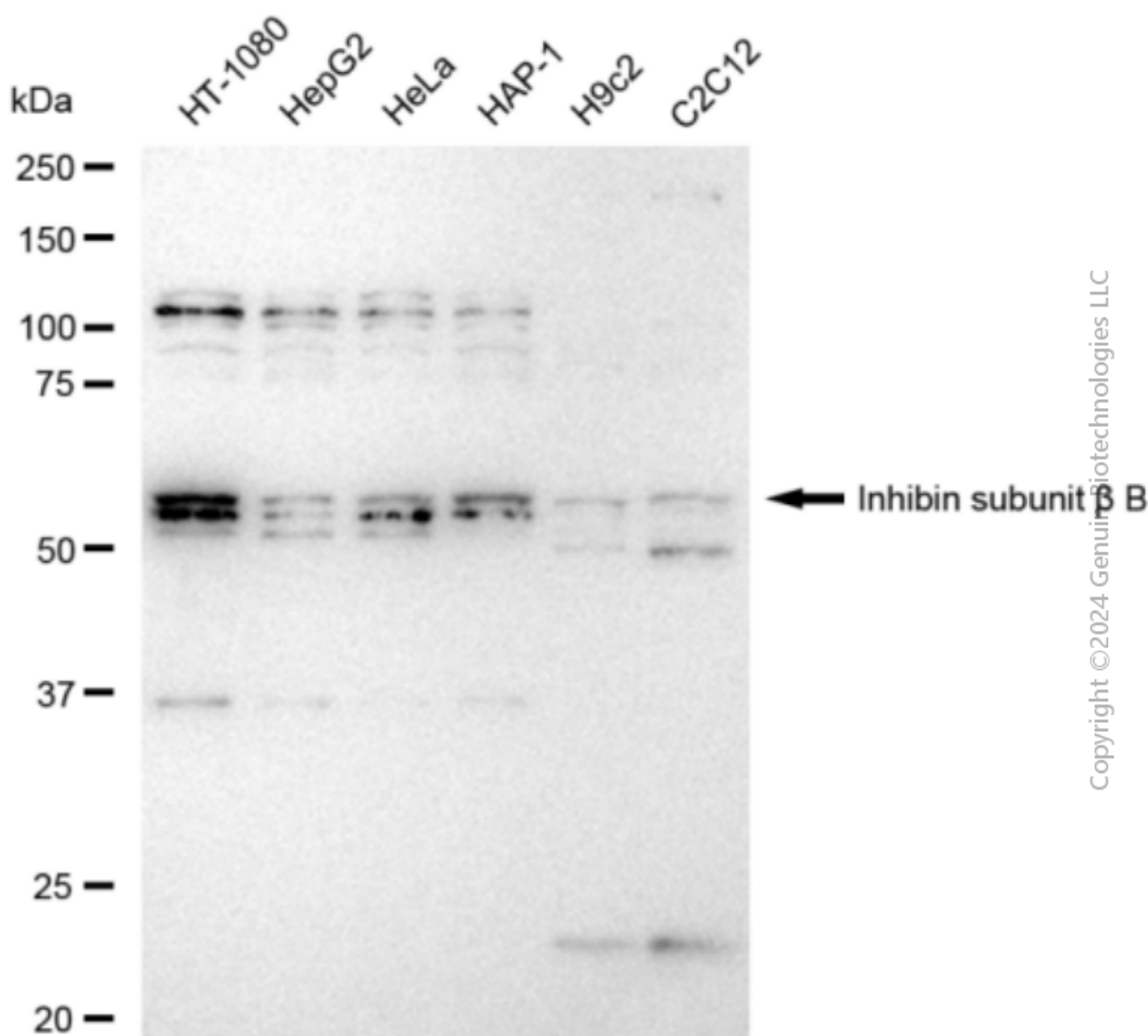


Copyright ©2024 Genuin Biotechnologies LLC

Flow cytometric analysis of Inhibin subunit beta B expression in HT-1080 cells using Inhibin subunit beta B antibody (Cat#2234, 1:2,000). Green, isotype control; red, Inhibin subunit beta B.

Anti-Inhibin subunit beta B Recombinant Rabbit Monoclonal Antibody

PAGE 3



Western blotting analysis using anti-Inhibin subunit beta B antibody (Cat#2234). Total cell lysates (30 µg) from various cell lines were loaded and separated by SDS-PAGE. The blot was incubated with anti-Inhibin subunit beta B antibody (Cat#2234, 1:5,000) and HRP-conjugated goat anti-rabbit secondary antibody (Cat#201, 1:20,000) respectively. Image was developed using FeQ™ ECL Substrate Kit (Cat#226).

SUPPORT

SUPPORT@GENUINBIOTECH.COM
TEL: +1-540-855-7041

ORDERS

SALES@GENUINBIOTECH.COM
FAX: +1-540-855-7041

WWW.GENUINBIOTECH.COM