

Anti-HHEX Recombinant Rabbit Monoclonal Antibody



Catalog #: 2235

Aliases

HHEX; Hematopoietically Expressed Homeobox; HEX; HOX11L-PEN; PRHX; Hematopoietically-Expressed Homeobox Protein HHEX; Proline-Rich Homeodomain Protein; Homeobox Protein HEX; Homeobox Protein PRH; PRH; Proline-Rich Homeodomain-Containing Transcription Factor; Homeobox, Hematopoietically Expressed; HMPH

Background

Gene Name: HHEX

NCBI Gene Entry: [3087](#)

UniProt Entry: [Q03014](#)

Application Information

Molecular Weight: Predicted, 30 kDa; observed, 30 kDa

Clonality: Rabbit monoclonal antibody

Clone ID: 23GB6630

Species Reactivity: Human

Applications Tested: Western blotting (WB), flow cytometry (FCM), immunocytochemistry (IC)

Immunogen

A synthesized peptide derived from human Hex

Isotype

Rabbit IgG

Storage Buffer

Supplied in PBS (pH 7.4) containing 50% glycerol, and 0.02% sodium azide.

Storage

Store at -20 °C for one year.

Recommended Dilutions

Western Blotting (WB): 1:1,000-1:5,000

Flow Cytometry (FCM): 1:2,000

Immunocytochemistry (IC): 1:100-1:1,000

SUPPORT

SUPPORT@GENUINBIOTECH.COM
TEL: +1-540-855-7041

ORDERS

SALES@GENUINBIOTECH.COM
FAX: +1-540-855-7041

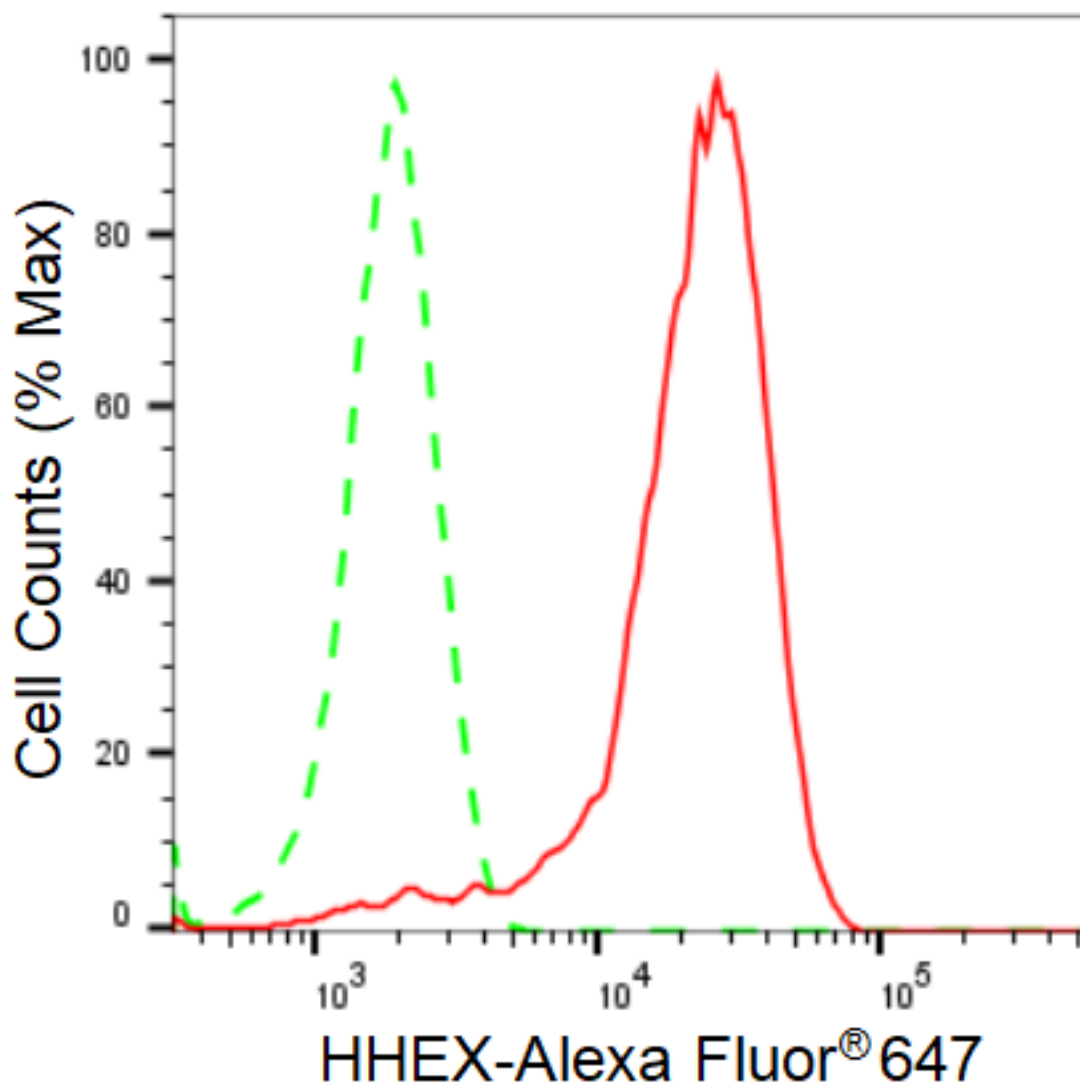
WWW.GENUINBIOTECH.COM

Anti-HHEX Recombinant Rabbit Monoclonal Antibody

PAGE 2

Note: This product is for research use only.

Validation Data



Copyright ©2025 Genuin Biotechnologies LLC

Flow cytometric analysis of HHEX expression in HeLa cells using anti-HHEX antibody (Cat#2235, 1 µg/2000). Green, isotype control; red, HHEX.

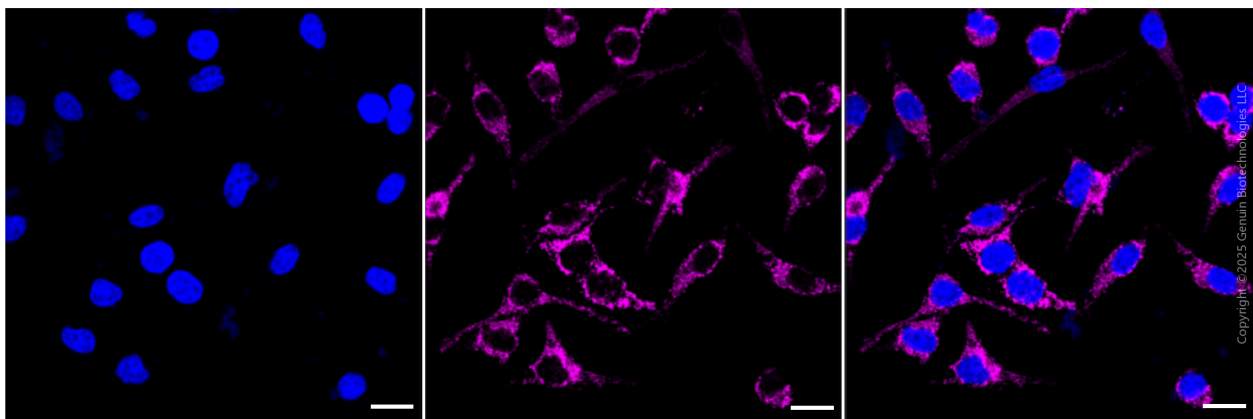
SUPPORT

SUPPORT@GENUINBIOTECH.COM
TEL: +1-540-855-7041

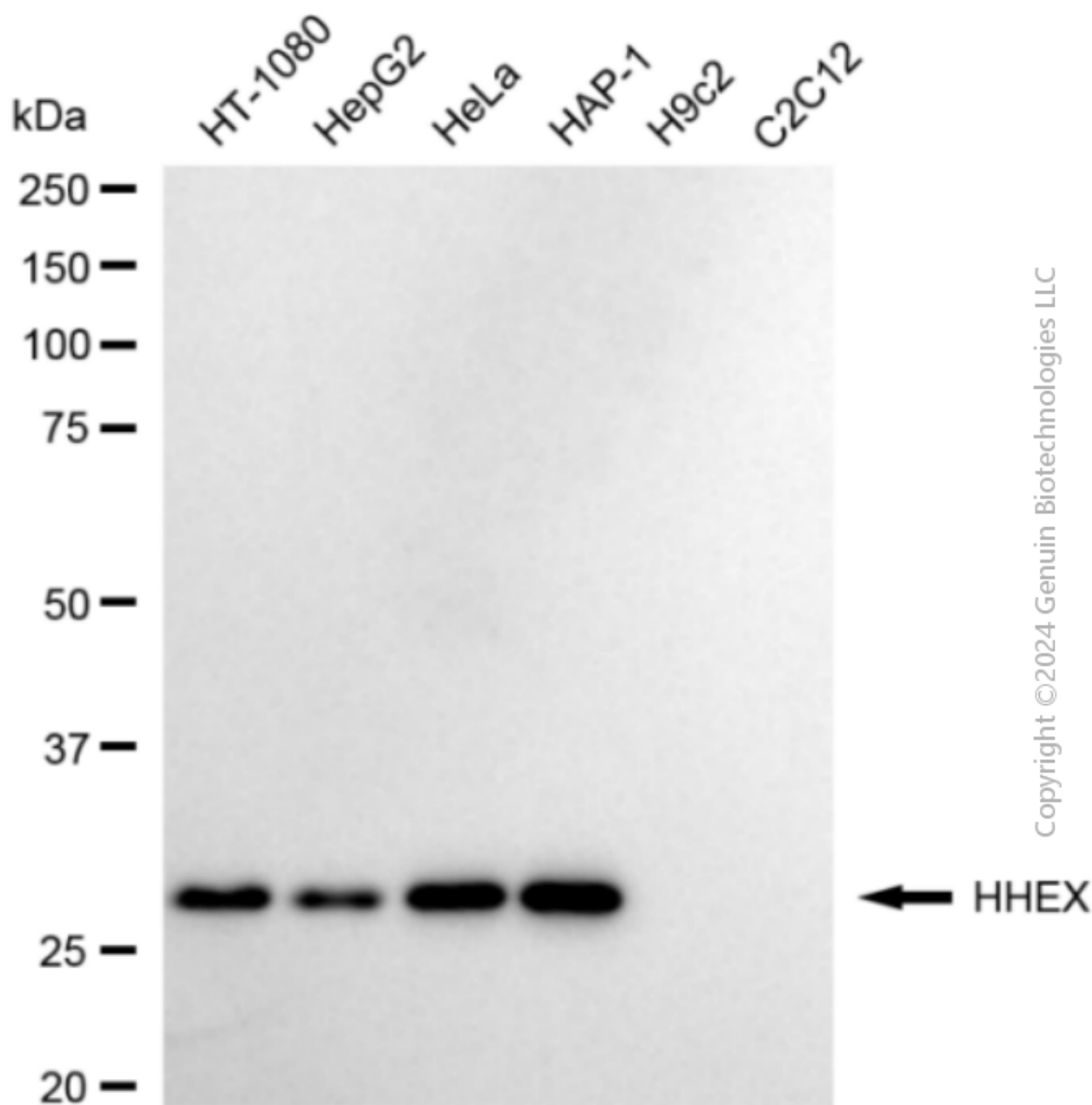
ORDERS

SALES@GENUINBIOTECH.COM
FAX: +1-540-855-7041

WWW.GENUINBIOTECH.COM



Immunocytochemical staining of HeLa cells with anti-HHEX antibody (Cat#2235, 1:1,000) . Nuclei were stained blue with DAPI; HHEX was stained magenta with Alexa Fluor® 647. Images were taken using Leica stellaris 5. Protein abundance based on laser Intensity and smart gain: High. Scale bar, 20 μ m.



Western blotting analysis using anti-HHEX antibody (Cat#2235). Total cell lysates (30 μ g) from various cell lines were loaded and separated by SDS-PAGE. The blot was incubated with anti-HHEX antibody (Cat#2235, 1:5,000) and HRP-conjugated goat anti-rabbit secondary antibody (Cat#201, 1:20,000) respectively. Image was developed using FeQ™ ECL Substrate Kit (Cat#226).