

Anti-IGFBP2 Recombinant Rabbit Monoclonal Antibody



Catalog #: 2236

Aliases

IGFBP2; Insulin Like Growth Factor Binding Protein 2; IBP2; Insulin-Like Growth Factor Binding Protein 2, 36kDa; Insulin-Like Growth Factor-Binding Protein 2; IGF-Binding Protein 2; Insulin-Like Growth Factor Binding Protein 2 (36kD); Insulin-Like Growth Factor Binding Protein 2; IGF-BP53; IGFBP-2; IBP-2; BP2

Background

Gene Name: IGFBP2

NCBI Gene Entry: [3485](#)

UniProt Entry: [P18065](#)

Application Information

Molecular Weight: Predicted, 35 kDa; observed, 35 kDa

Clonality: Rabbit monoclonal antibody

Clone ID: 23GB6635

Species Reactivity: Human

Applications Tested: Western blotting (WB), flow cytometry (FCM), immunocytochemistry (IC)

Immunogen

A synthesized peptide derived from human IGFBP2

Isotype

Rabbit IgG

Storage Buffer

Supplied in PBS (pH 7.4) containing 50% glycerol, and 0.02% sodium azide.

Storage

Store at -20 °C for one year.

Recommended Dilutions

Western Blotting (WB): 1:1,000-1:5,000

Flow Cytometry (FCM): 1:2,000

Immunocytochemistry (IC): 1:100-1:1,000

SUPPORT

SUPPORT@GENUINBIOTECH.COM
TEL: +1-540-855-7041

ORDERS

SALES@GENUINBIOTECH.COM
FAX: +1-540-855-7041

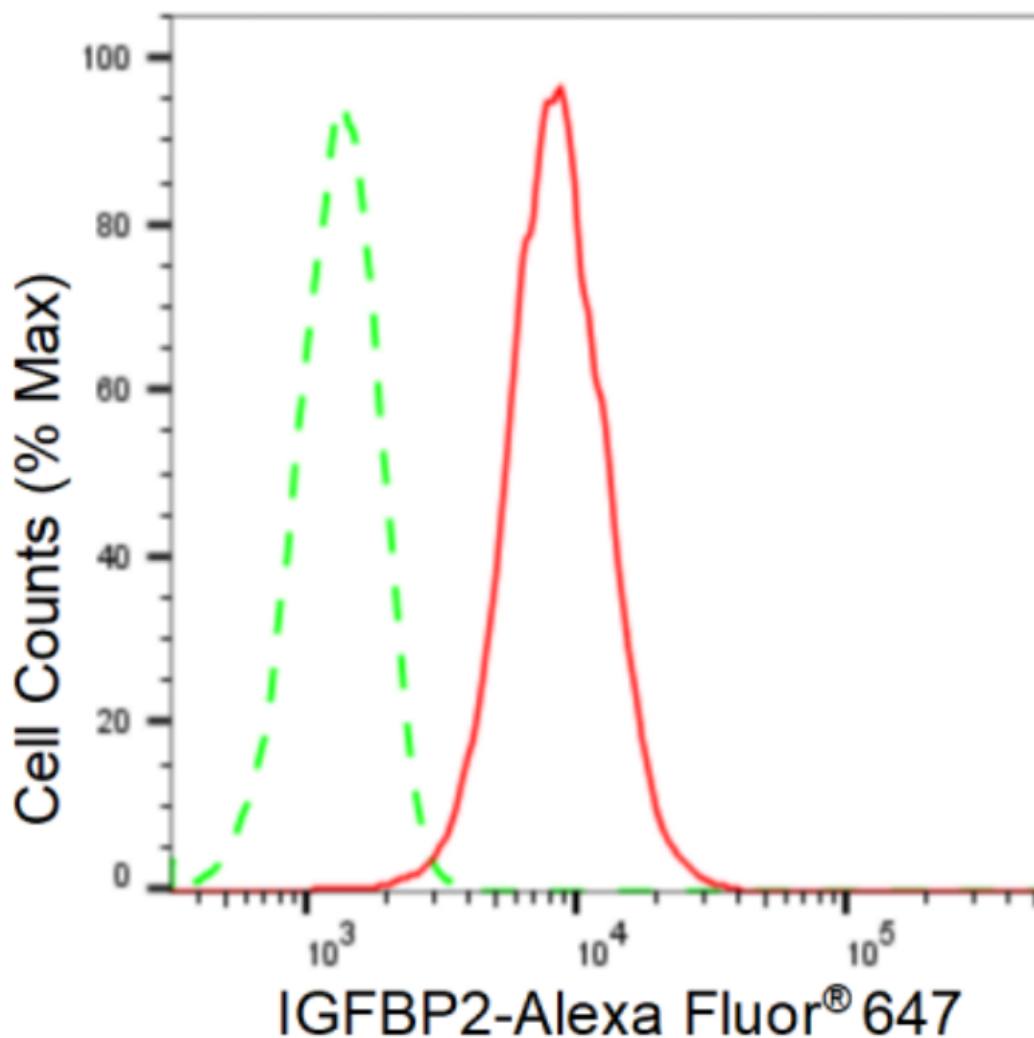
WWW.GENUINBIOTECH.COM

Anti-IGFBP2 Recombinant Rabbit Monoclonal Antibody

PAGE 2

Note: This product is for research use only.

Validation Data



Copyright ©2024 Genuin Biotechnologies LLC

Flow cytometric analysis of IGFBP2 expression in HAP-1 cells using anti-IGFBP2 antibody (Cat#2236, 1:2,000). Green, isotype control; red, IGFBP2.

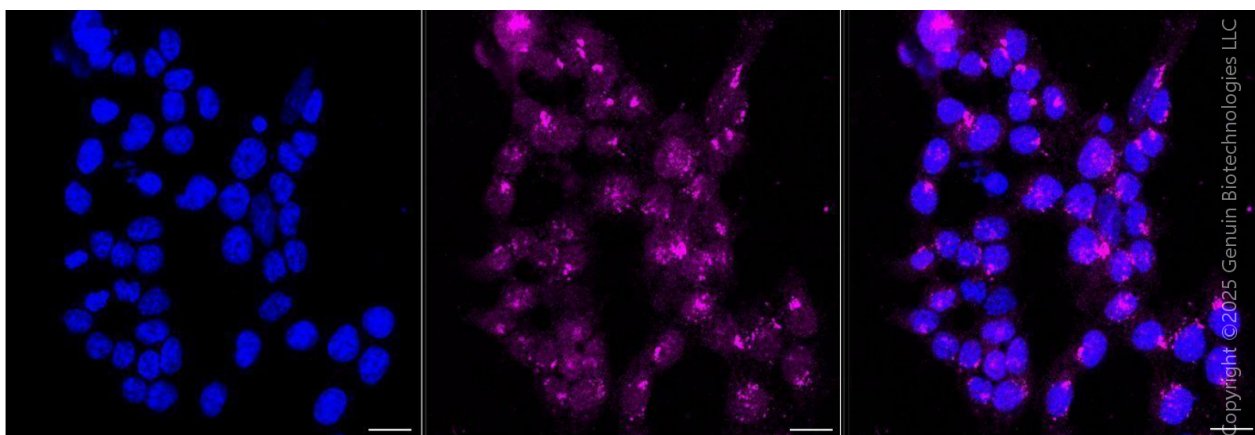
SUPPORT

SUPPORT@GENUINBIOTECH.COM
TEL: +1-540-855-7041

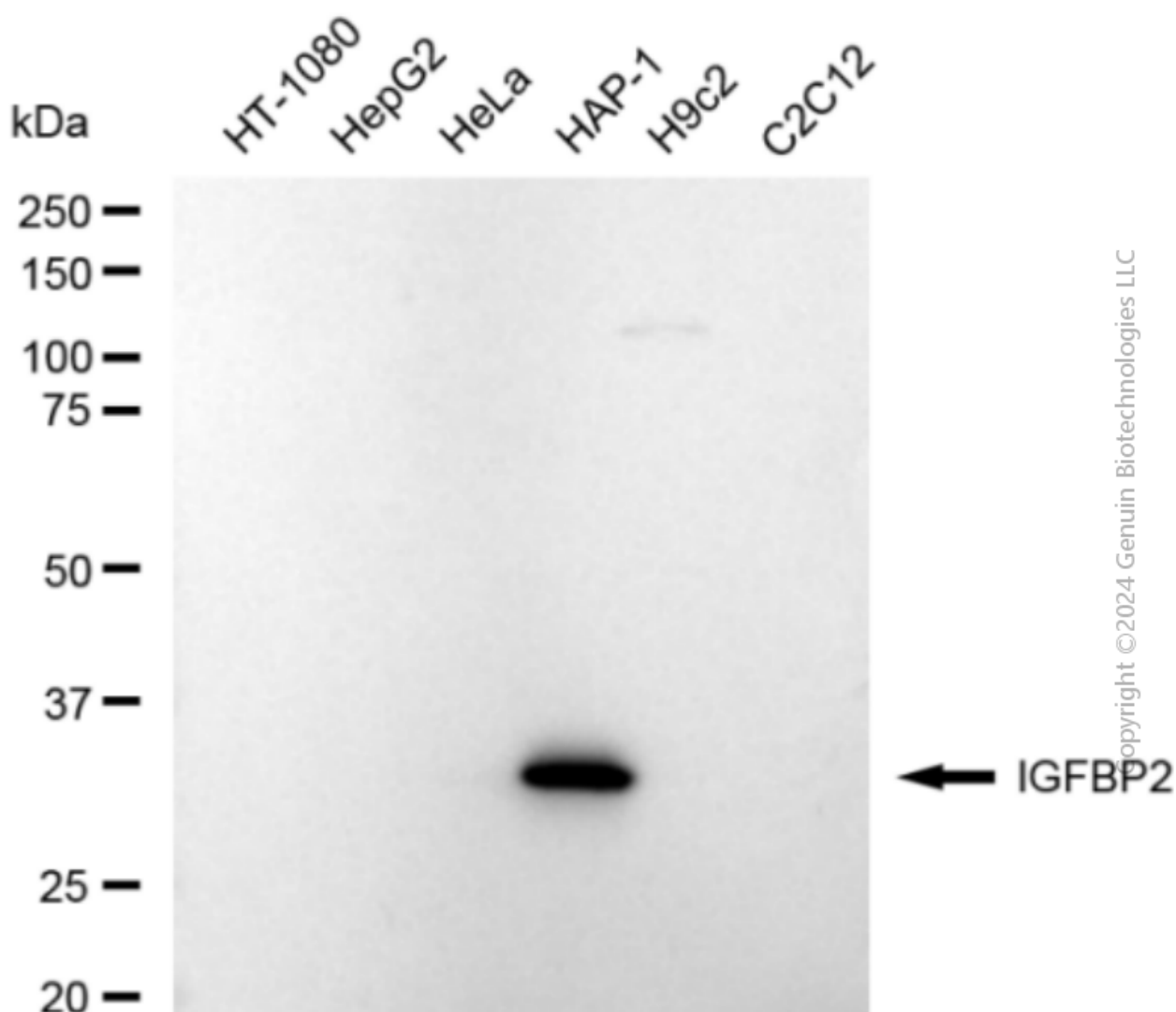
ORDERS

SALES@GENUINBIOTECH.COM
FAX: +1-540-855-7041

WWW.GENUINBIOTECH.COM



Immunocytochemical staining of HAP-1 cells with anti-IGFBP2 antibody (Cat#2236, 1:1,000) . Nuclei were stained blue with DAPI; IGFBP2 was stained magenta with Alexa Fluor® 647. Images were taken using Leica stellaris 5. Protein abundance based on laser Intensity and smart gain: Medium. Scale bar, 20 μ m.



Western blotting analysis using anti-IGFBP2 antibody (Cat#2236). Total cell lysates (30 μ g) from various cell lines were loaded and separated by SDS-PAGE. The blot was incubated with anti-IGFBP2 antibody (Cat#2236, 1:5,000) and HRP-conjugated goat anti-rabbit secondary antibody (Cat#201, 1:20,000) respectively. Image was developed using FeQTM ECL Substrate Kit (Cat#226).