

# Anti-LEFTY1 + LEFTY2 Recombinant Rabbit Monoclonal Antibody



**Catalog #: 2239**

## Aliases

LEFTY1; Left-Right Determination Factor 1; LEFTYB; LEFTB; Left-Right Determination Factor B; Protein Lefty-1; Protein Lefty-B; Left-Right Determination, Factor B; LEFTY2; Left-Right Determination Factor 2; LEFTYA; LEFTA; TGFB4; EBAF; Endometrial Bleeding-Associated Factor; Left-Right Determination Factor A; Transforming Growth Factor Beta-4; Protein Lefty-2; Protein Lefty-A; TGF-Beta-4; Endometrial Bleeding Associated Factor (Left-Right Determination, Factor A; Transforming Growth Factor Beta Superfamily); Transforming Growth Factor, Beta-4 (Endometrial Bleeding-Associated Factor; LEFTY A)

## Background

Gene Name: LEFTY1/LEFTY2

NCBI Gene Entry: [7044](#)

UniProt Entry: [O00292](#)

## Application Information

Molecular Weight: Predicted, 41 kDa; observed, 34 kDa

Clonality: Rabbit monoclonal antibody

Clone ID: 23GB6650

Species Reactivity: Human, mouse, rat

Applications Tested: Western blotting (WB)

## Immunogen

A synthesized peptide derived from human LEFTY1 + LEFTY2

## Isotype

Rabbit IgG

## Storage Buffer

Supplied in PBS (pH 7.4) containing 50% glycerol, and 0.02% sodium azide.

## Storage

Store at -20 °C for one year.

## Recommended Dilutions

Western Blotting (WB): 1:1,000-1:5,000

---

### SUPPORT

SUPPORT@GENUINBIOTECH.COM  
TEL: +1-540-855-7041

### ORDERS

SALES@GENUINBIOTECH.COM  
FAX: +1-540-855-7041

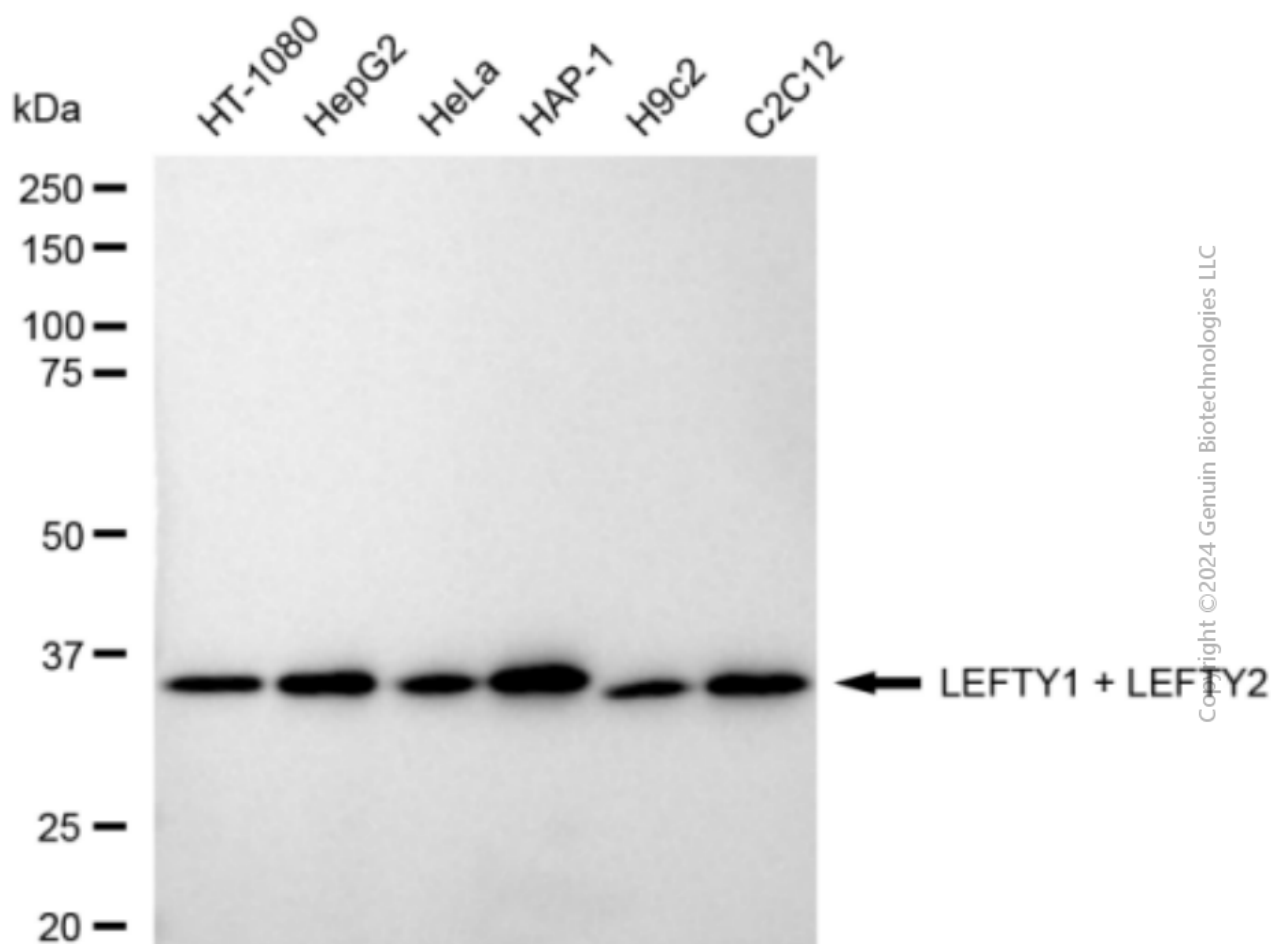
[WWW.GENUINBIOTECH.COM](http://WWW.GENUINBIOTECH.COM)

# Anti-LEFTY1 + LEFTY2 Recombinant Rabbit Monoclonal Antibody

PAGE 2

**Note:** This product is for research use only.

## Validation Data



Western blotting analysis using anti-LEFTY1 + LEFTY2 antibody (Cat#2239). Total cell lysates (30 µg) from various cell lines were loaded and separated by SDS-PAGE. The blot was incubated with anti-LEFTY1 + LEFTY2 antibody (Cat#2239, 1:5,000) and HRP-conjugated goat anti-rabbit secondary antibody (Cat#201, 1:20,000) respectively. Image was developed using FeQ™ ECL Substrate Kit (Cat#226).

### SUPPORT

SUPPORT@GENUINBIOTECH.COM  
TEL: +1-540-855-7041

### ORDERS

SALES@GENUINBIOTECH.COM  
FAX: +1-540-855-7041

WWW.GENUINBIOTECH.COM