

# Anti-IMPDH2 Recombinant Rabbit Monoclonal Antibody



**Catalog #: 2244**

## Aliases

IMPDH2; Inosine Monophosphate Dehydrogenase 2; IMP (Inosine 5'-Monophosphate) Dehydrogenase 2; Inosine-5'-Monophosphate Dehydrogenase Type II; Inosine-5'-Monophosphate Dehydrogenase 2; IMP Dehydrogenase II; EC 1.1.1.205; IMPDH-II; IMPDH 2; IMPD 2; IMPD2; IMP (Inosine Monophosphate) Dehydrogenase 2; Inosine Monophosphate Dehydrogenase Type II; Epididymis Secretory Sperm Binding Protein; Inosine 5' Phosphate Dehydrogenase 2; IMP Dehydrogenase 2; IMP Oxireductase 2

## Background

Gene Name: IMPDH2

NCBI Gene Entry: [3615](#)

UniProt Entry: [P12268](#)

## Application Information

Molecular Weight: Predicted, 56 kDa; observed, 56 kDa

Clonality: Rabbit monoclonal antibody

Clone ID: 23GB6670

Species Reactivity: Human, mouse, rat

Applications Tested: Western blotting (WB), flow cytometry (FCM)

## Immunogen

A synthesized peptide derived from human IMPDH2

## Isotype

Rabbit IgG

## Storage Buffer

Supplied in PBS (pH 7.4) containing 50% glycerol, and 0.02% sodium azide.

## Storage

Store at -20 °C for one year.

## Recommended Dilutions

Western Blotting (WB): 1:1,000-1:5,000

Flow Cytometry (FCM): 1:2,000

---

### SUPPORT

SUPPORT@GENUINBIOTECH.COM  
TEL: +1-540-855-7041

### ORDERS

SALES@GENUINBIOTECH.COM  
FAX: +1-540-855-7041

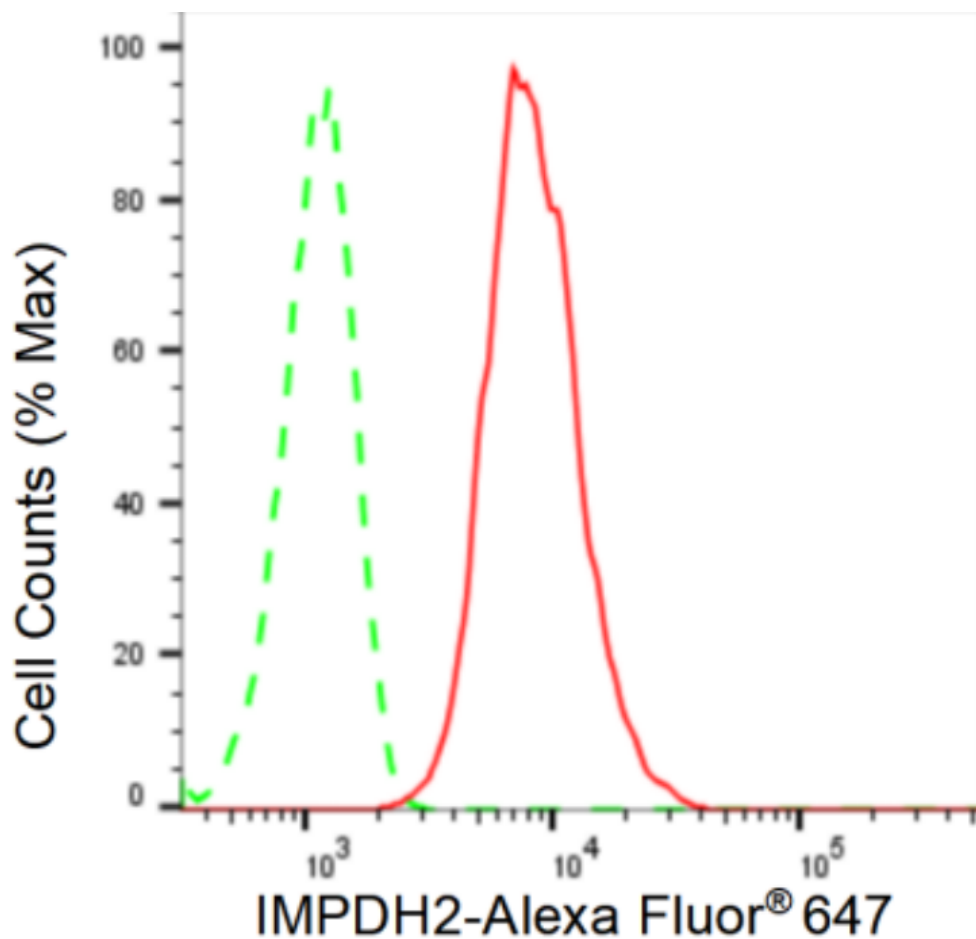
[WWW.GENUINBIOTECH.COM](http://WWW.GENUINBIOTECH.COM)

# Anti-IMPDH2 Recombinant Rabbit Monoclonal Antibody

PAGE 2

**Note:** This product is for research use only.

## Validation Data



Copyright ©2024 Genuin Biotechnologies LLC

Flow cytometric analysis of IMPDH2 expression in HT-1080 cells using IMPDH2 antibody (Cat#2244, 1:2,000). Green, isotype control; red, IMPDH2.

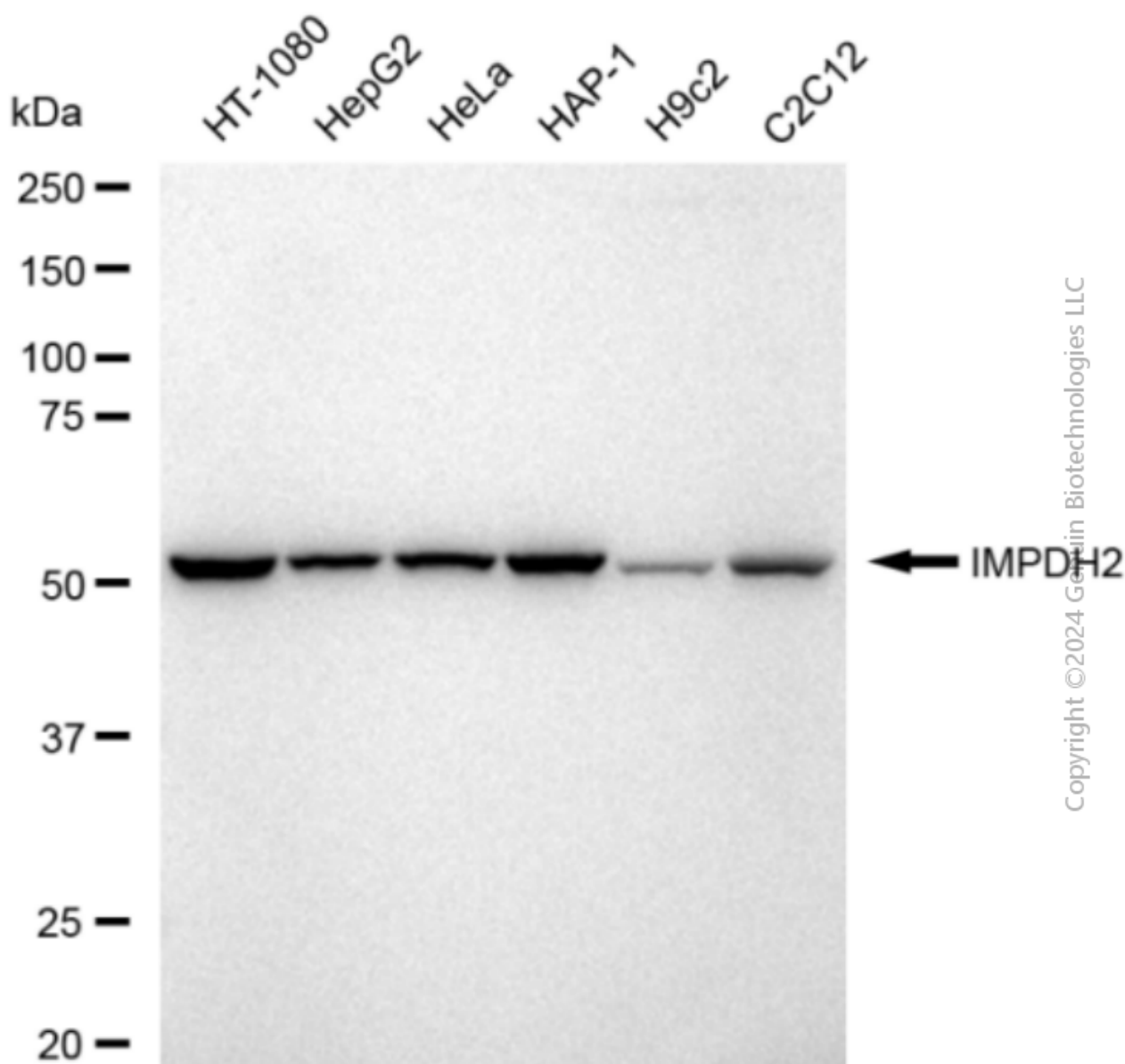
### SUPPORT

SUPPORT@GENUINBIOTECH.COM  
TEL: +1-540-855-7041

### ORDERS

SALES@GENUINBIOTECH.COM  
FAX: +1-540-855-7041

[WWW.GENUINBIOTECH.COM](http://WWW.GENUINBIOTECH.COM)



Western blotting analysis using anti-IMPDH2 antibody (Cat#2244). Total cell lysates (30  $\mu$ g) from various cell lines were loaded and separated by SDS-PAGE. The blot was incubated with anti-IMPDH2 antibody (Cat#2244, 1:5,000) and HRP-conjugated goat anti-rabbit secondary antibody (Cat#201, 1:20,000) respectively. Image was developed using FeQ™ ECL Substrate Kit (Cat#226).