

Anti-CD116 Recombinant Rabbit Monoclonal Antibody



Catalog #: 2253

Aliases

CSF2RA; Colony Stimulating Factor 2 Receptor Subunit Alpha; CD116; CSF2R; Colony Stimulating Factor 2 Receptor, Alpha, Low-Affinity (Granulocyte-Macrophage); Granulocyte-Macrophage Colony-Stimulating Factor Receptor Subunit Alpha; Alpha-GM-CSF Receptor; GM-CSF-R-Alpha; CD116 Antigen; GMCSFR-Alpha; GMR-Alpha; AlphaGMR; CDw116; CSF2RY; Granulocyte-Macrophage Colony-Stimulating Factor Receptor Alpha Chain; Colony Stimulating Factor 2 Receptor Alpha Subunit; GM-CSF Receptor Alpha Subunit; ALPHAGMR; CSF2RAX; CSF2RAY; CSF2RX; GMCSFR; SMDP4; GMR

Background

Gene Name: CSF2RA

NCBI Gene Entry: [1438](#)

UniProt Entry: [P15509](#)

Application Information

Molecular Weight: Predicted, 46 kDa; observed, 50 kDa

Clonality: Rabbit monoclonal antibody

Clone ID: 23GB5695

Species Reactivity: Human

Applications Tested: Western blotting (WB), flow cytometry (FCM), immunocytochemistry (IC)

Immunogen

A synthesized peptide derived from human CD116

Isotype

Rabbit IgG

Storage Buffer

Supplied in PBS (pH 7.4) containing 50% glycerol, and 0.02% sodium azide.

Storage

Store at -20 °C for one year.

Recommended Dilutions

Western Blotting (WB): 1:1,000-1:5,000

Flow Cytometry (FCM): 1:2,000

SUPPORT

SUPPORT@GENUINBIOTECH.COM
TEL: +1-540-855-7041

ORDERS

SALES@GENUINBIOTECH.COM
FAX: +1-540-855-7041

WWW.GENUINBIOTECH.COM

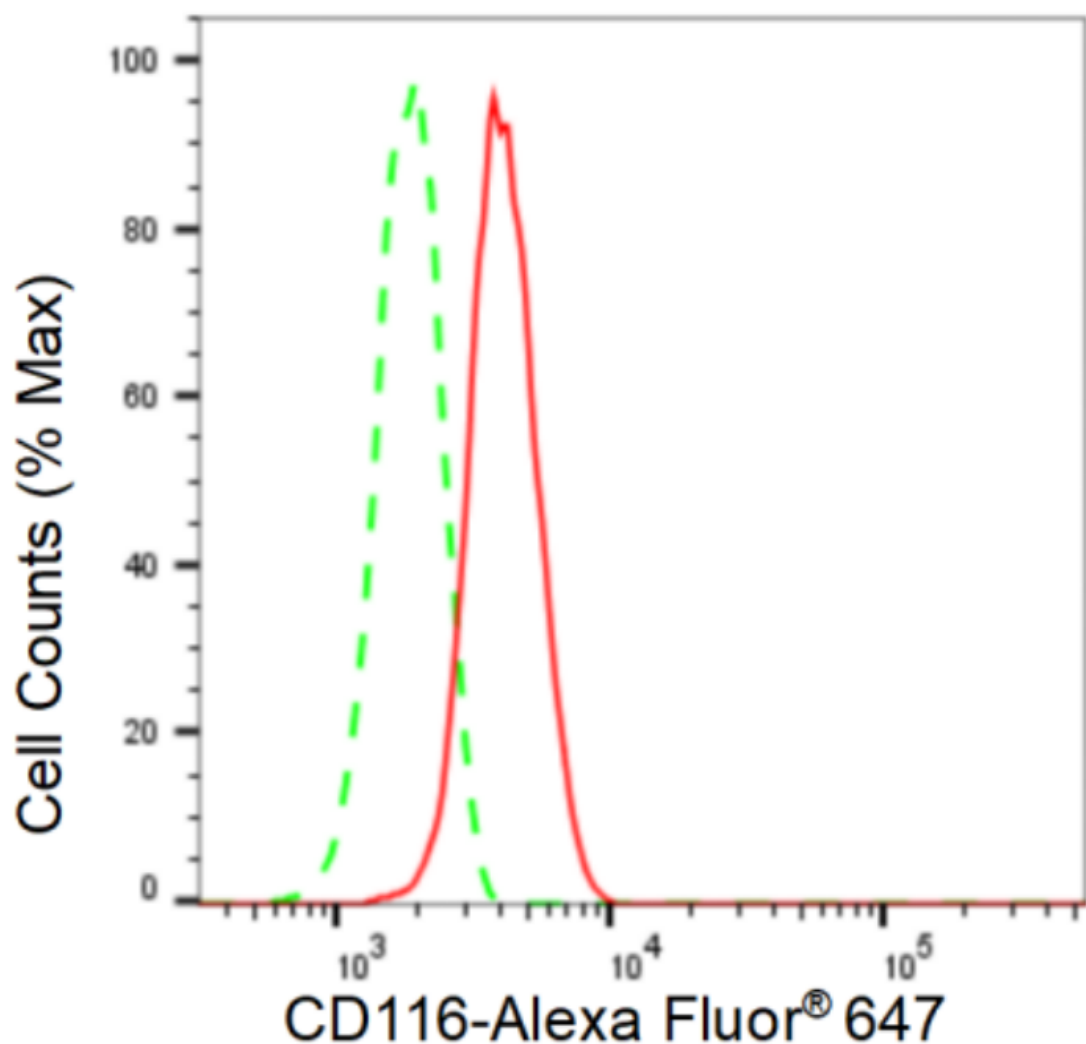
Anti-CD116 Recombinant Rabbit Monoclonal Antibody

PAGE 2

Immunocytochemistry (IC): 1:100-1:1,000

Note: This product is for research use only.

Validation Data



Copyright ©2024 Genuin Biotechnologies LLC

Flow cytometric analysis of CD116 expression in HepG2 cells using CD116 antibody (Cat#2253, 1:2,000). Green, isotype control; red, CD116.

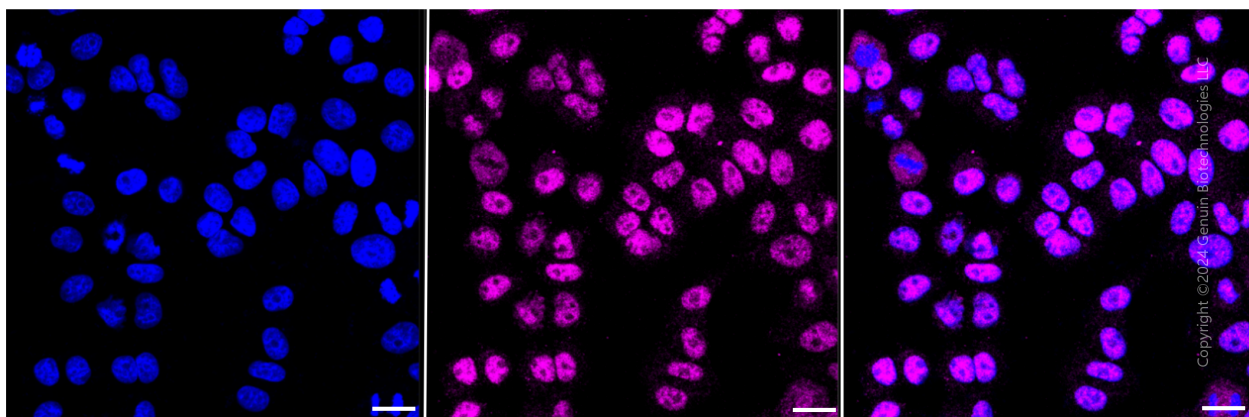
SUPPORT

SUPPORT@GENUINBIOTECH.COM
TEL: +1-540-855-7041

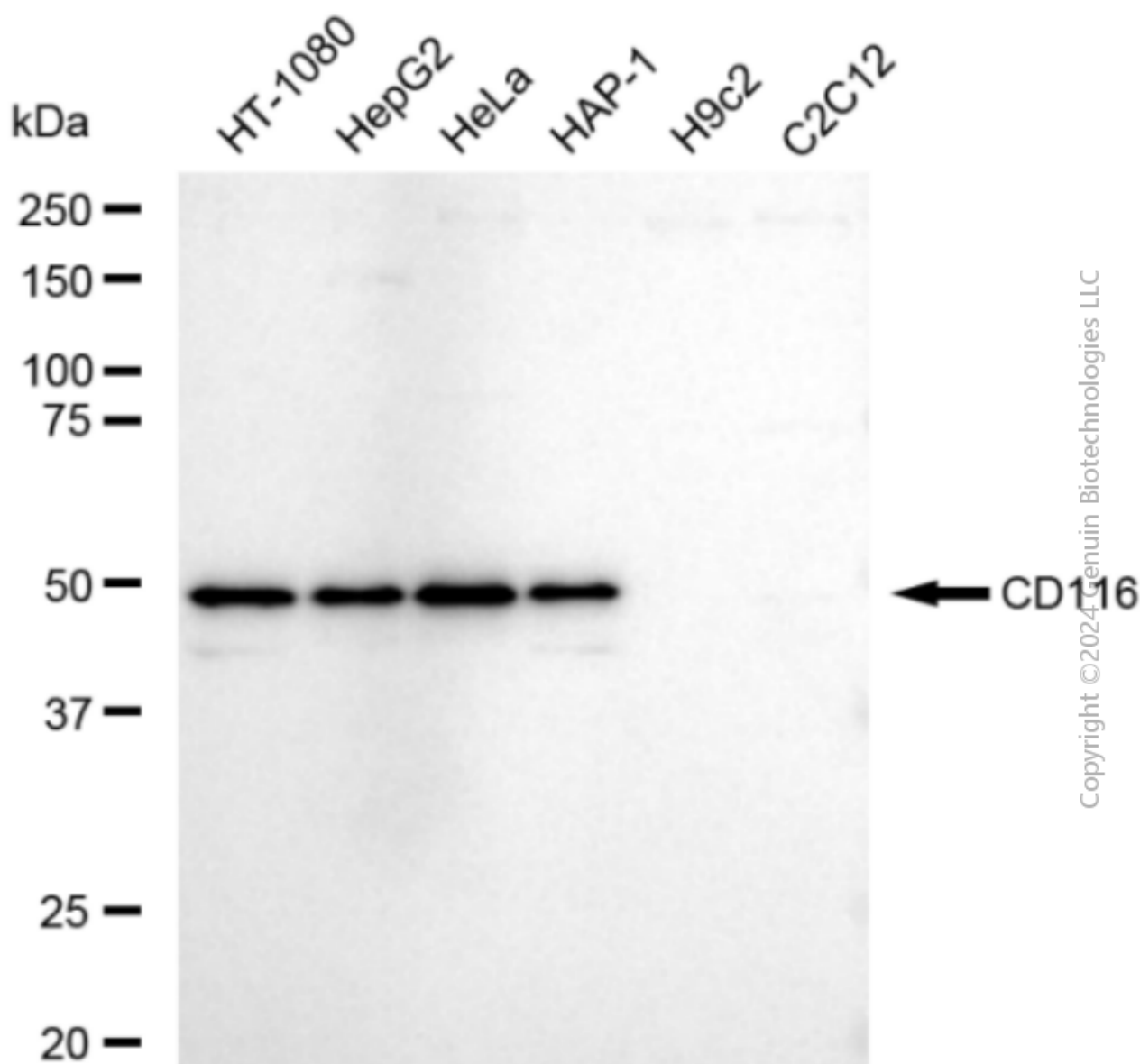
ORDERS

SALES@GENUINBIOTECH.COM
FAX: +1-540-855-7041

WWW.GENUINBIOTECH.COM



Immunocytochemical staining of HepG2 cells with anti-CD116 antibody (Cat#2253, 1:1,000). Nuclei were stained blue with DAPI; CD116 was stained magenta with Alexa Fluor® 647. Images were taken using Leica stellaris 5. Protein abundance based on laser Intensity and smart gain: Medium. Scale bar: 20 μ m.



Western blotting analysis using anti-CD116 antibody (Cat#2253). Total cell lysates (30 µg) from various cell lines were loaded and separated by SDS-PAGE. The blot was incubated with anti-CD116 antibody (Cat#2253, 1:5,000) and HRP-conjugated goat anti-rabbit secondary antibody (Cat#201, 1:20,000) respectively. Image was developed using FeQ™ ECL Substrate Kit (Cat#226).