

Anti-GPRC5B Recombinant Rabbit Monoclonal Antibody



Catalog #: 2256

Aliases

GPRC5B; G Protein-Coupled Receptor Class C Group 5 Member B; RAIG-2; G Protein-Coupled Receptor, Family C, Group 1, Member B; G-Protein Coupled Receptor Family C Group 5 Member B; Retinoic Acid-Induced Gene 2 Protein; RAIG2; G Protein-Coupled Receptor, Family C, Group 5, Member B; G Protein-Coupled Receptor, Class C, Group 5, Member B; Retinoic Acid Responsive Gene Protein; A-69G12.1; MLC3

Background

Gene Name: GPRC5B

NCBI Gene Entry: [51704](#)

UniProt Entry: [Q9NZH0](#)

Application Information

Molecular Weight: Predicted, 45 kDa; observed, 52 kDa

Clonality: Rabbit monoclonal antibody

Clone ID: 23GB5710

Species Reactivity: Human, mouse, rat

Applications Tested: Western blotting (WB), flow cytometry (FCM), immunocytochemistry (IC)

Immunogen

A synthesized peptide derived from human GPRC5B

Isotype

Rabbit IgG

Storage Buffer

Supplied in PBS (pH 7.4) containing 50% glycerol, and 0.02% sodium azide.

Storage

Store at -20 °C for one year.

Recommended Dilutions

Western Blotting (WB): 1:1,000-1:5,000

Flow Cytometry (FCM): 1:2,000

Immunocytochemistry (IC): 1:100-1:1,000

SUPPORT

SUPPORT@GENUINBIOTECH.COM
TEL: +1-540-855-7041

ORDERS

SALES@GENUINBIOTECH.COM
FAX: +1-540-855-7041

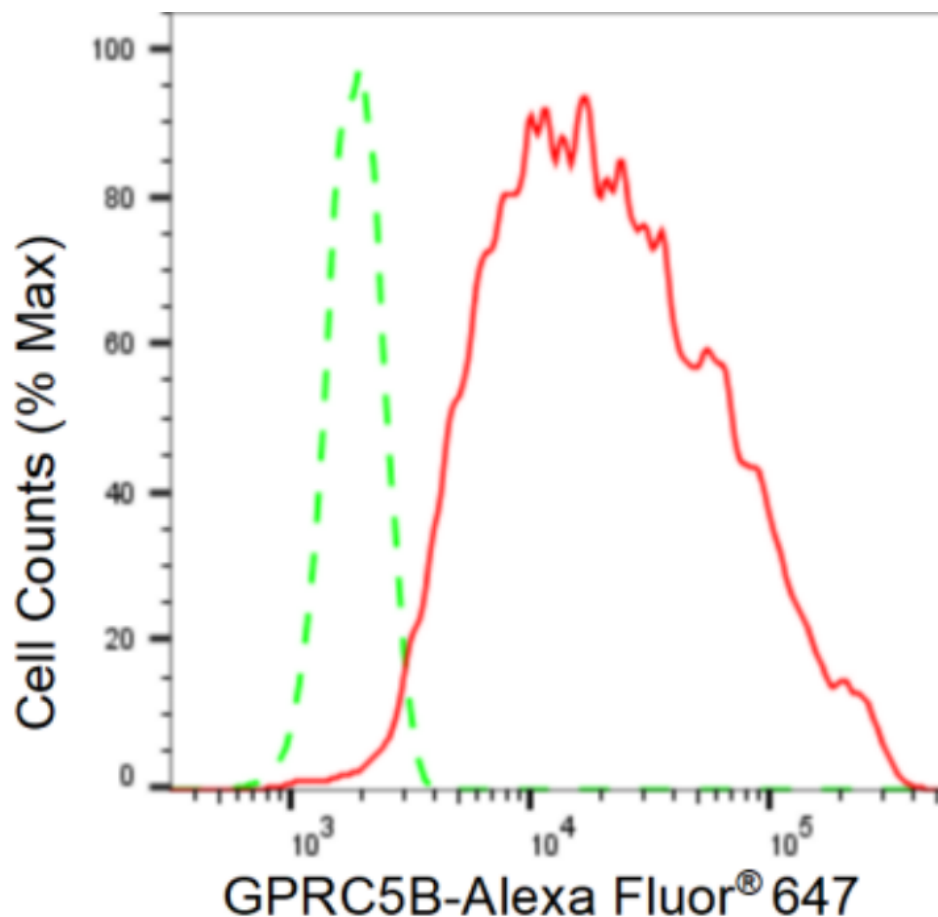
WWW.GENUINBIOTECH.COM

Anti-GPRC5B Recombinant Rabbit Monoclonal Antibody

PAGE 2

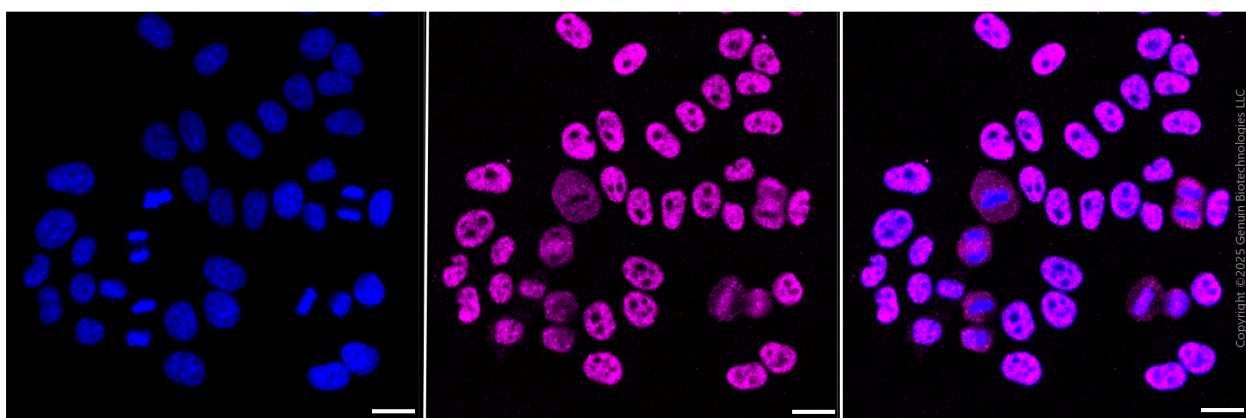
Note: This product is for research use only.

Validation Data



Copyright ©2024 Genuin Biotechnologies LLC

Flow cytometric analysis of GPRC5B expression in HepG2 cells using GPRC5B antibody (Cat#2256, 1:2,000). Green, isotype control; red, GPRC5B.



Copyright ©2025 Genuin Biotechnologies LLC

Immunocytochemical staining of HepG2 cells with anti-GPRC5B antibody (Cat#2256, 1:1000). Nuclei were stained blue with DAPI; GPRC5B was stained magenta with Alexa Fluor® 647.

SUPPORT

SUPPORT@GENUINBIOTECH.COM
TEL: +1-540-855-7041

ORDERS

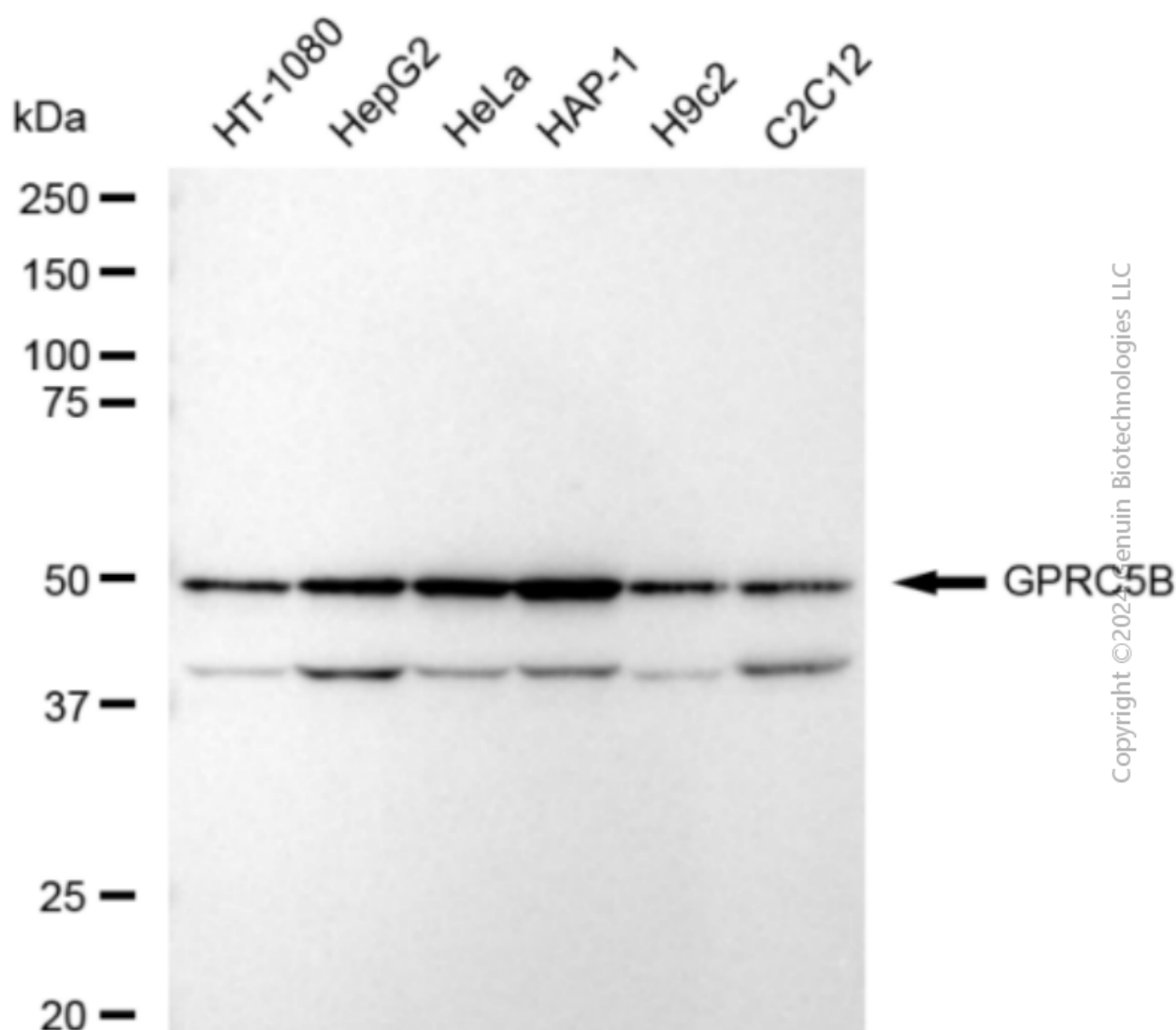
SALES@GENUINBIOTECH.COM
FAX: +1-540-855-7041

WWW.GENUINBIOTECH.COM

Anti-GPRC5B Recombinant Rabbit Monoclonal Antibody

PAGE 3

Images were taken using Leica stellaris 5. Protein abundance based on laser Intensity and smart gain: Medium. Scale bar, 20 μ m.



Western blotting analysis using anti-GPRC5B antibody (Cat#2256). Total cell lysates (30 μ g) from various cell lines were loaded and separated by SDS-PAGE. The blot was incubated with anti-GPRC5B antibody (Cat#2256, 1:5,000) and HRP-conjugated goat anti-rabbit secondary antibody (Cat#201, 1:20,000) respectively. Image was developed using FeQTM ECL Substrate Kit (Cat#226).

SUPPORT

SUPPORT@GENUINBIOTECH.COM
TEL: +1-540-855-7041

ORDERS

SALES@GENUINBIOTECH.COM
FAX: +1-540-855-7041

WWW.GENUINBIOTECH.COM