

Anti-CDH1 Recombinant Rabbit Monoclonal Antibody



Catalog #: 2257

Aliases

CDH1; Cadherin 1; Uvomorulin; CD324; UVO; Cadherin 1, Type 1, E-Cadherin (Epithelial); Epithelial Cadherin; E-Cadherin; Cadherin-1; CAM 120/80; CDHE; Calcium-Dependent Adhesion Protein, Epithelial; Epididymis Secretory Sperm Binding Protein; Cadherin 1, E-Cadherin (Epithelial); Cell-CAM 120/80; CD324 Antigen; E-Cadherin 1; UVOMORULIN; Arc-1; BCDS1; ECAD; LCAM

Background

Gene Name: CDH1
NCBI Gene Entry: [999](#)
UniProt Entry: [P12830](#)

Application Information

Molecular Weight: Predicted, 97 kDa; observed, 135 kDa
Clonality: Rabbit monoclonal antibody
Clone ID: 23GB5715
Species Reactivity: Human
Applications Tested: Western blotting (WB), immunohistochemistry (IHC)

Immunogen

A synthesized peptide derived from human E Cadherin

Isotype

Rabbit IgG

Storage Buffer

Supplied in PBS (pH 7.4) containing 50% glycerol, and 0.02% sodium azide.

Storage

Store at -20 °C for one year.

Recommended Dilutions

Western Blotting (WB): 1:1,000-1:5,000
Immunohistochemistry (IHC): 1:100-1:200

SUPPORT

SUPPORT@GENUINBIOTECH.COM
TEL: +1-540-855-7041

ORDERS

SALES@GENUINBIOTECH.COM
FAX: +1-540-855-7041

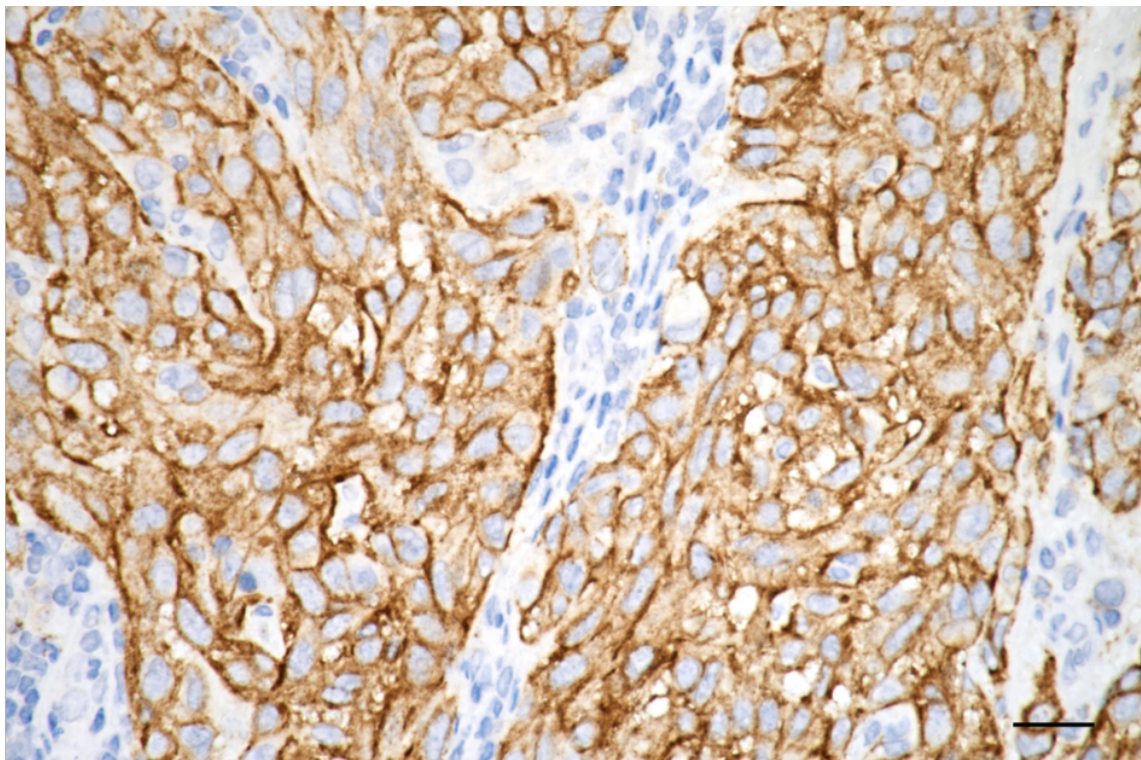
WWW.GENUINBIOTECH.COM

Anti-CDH1 Recombinant Rabbit Monoclonal Antibody

PAGE 2

Note: This product is for research use only.

Validation Data



Copyright ©2025 Genuin Biotechnologies LLC

Immunohistochemistry was performed on paraffin-embedded human breast carcinoma using anti-CDH1 antibody (Cat#2257, 1:200). Antigen retrieval was done in sodium citrate buffer (pH 6.0). DAB was used for detection, with hematoxylin counterstaining. Images were acquired using a Nikon Ci-L Plus microscope (40× objective). Scale bar: 25 μ m.

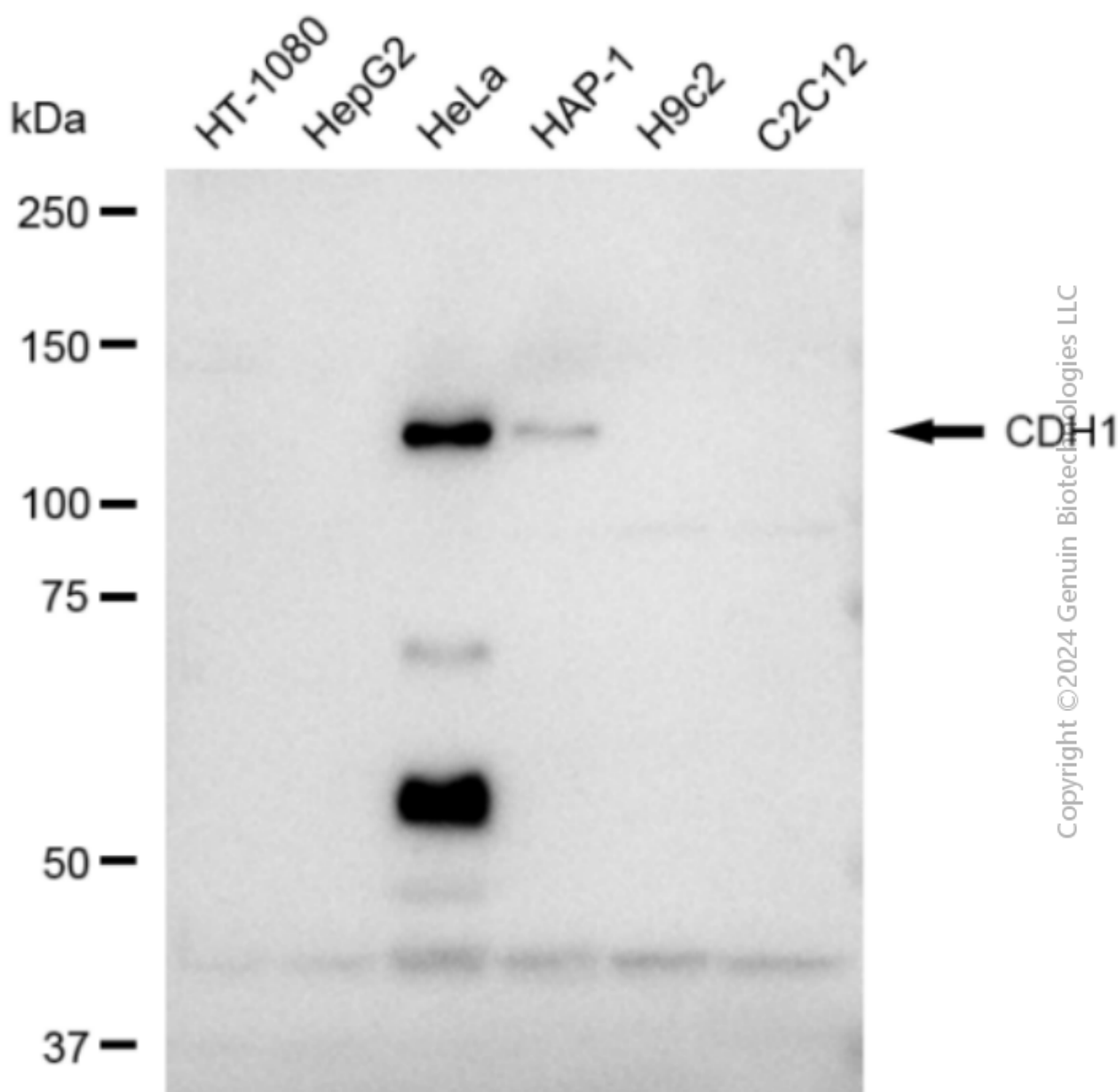
SUPPORT

SUPPORT@GENUINBIOTECH.COM
TEL: +1-540-855-7041

ORDERS

SALES@GENUINBIOTECH.COM
FAX: +1-540-855-7041

WWW.GENUINBIOTECH.COM



Western blotting analysis using anti-CDH1 antibody (Cat#2257). Total cell lysates (30 µg) from various cell lines were loaded and separated by SDS-PAGE. The blot was incubated with anti-CDH1 antibody (Cat#2257, 1:5,000) and HRP-conjugated goat anti-rabbit secondary antibody (Cat#201, 1:20,000) respectively. Image was developed using FeQ™ ECL Substrate Kit (Cat#226).