

Anti-N-Acetyltransferase 10 Recombinant Rabbit Monoclonal Antibody



Catalog #: 2260

Aliases

N-Acetyltransferase 10; KIAA1709; NET43; Kre33; HALP; 18S RRNA Cytosine Acetyltransferase; N-Acetyltransferase-Like Protein; RNA Cytidine Acetyltransferase; FLJ10774; FLJ12179; ALP; N-Acetyltransferase 10 (GCN5-Related); EC 2.3.1.-

Background

Gene Name: NAT10

NCBI Gene Entry: [55226](#)

UniProt Entry: [Q9H0A0](#)

Application Information

Molecular Weight: Predicted, 116 kDa; observed, 116 kDa

Clonality: Rabbit monoclonal antibody

Clone ID: 24GB15

Species Reactivity: Human, mouse, rat

Applications Tested: Western blotting (WB), flow cytometry (FCM), immunocytochemistry (IC)

Immunogen

A synthesized peptide derived from human NAT10

Isotype

Rabbit IgG

Storage Buffer

Supplied in PBS (pH 7.4) containing 50% glycerol, and 0.02% sodium azide.

Storage

Store at -20 °C for one year.

Recommended Dilutions

Western Blotting (WB): 1:1,000-1:5,000

Flow Cytometry (FCM): 1:2,000

Immunocytochemistry (IC): 1:100-1:1,000

Note: This product is for research use only.

SUPPORT

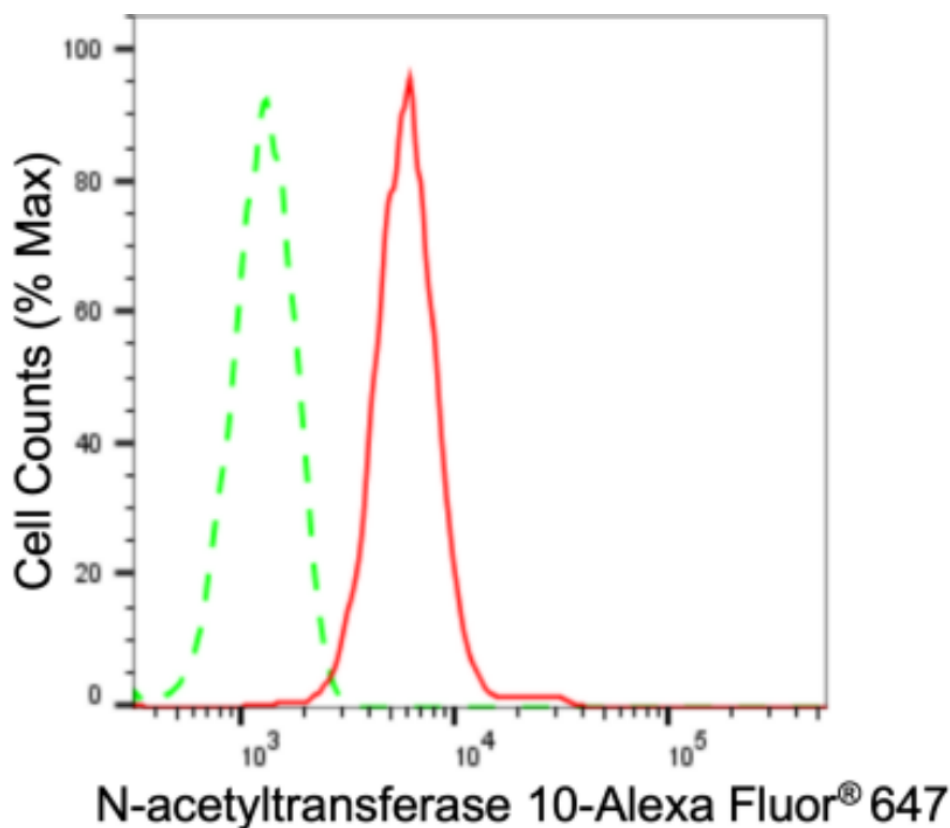
SUPPORT@GENUINBIOTECH.COM
TEL: +1-540-855-7041

ORDERS

SALES@GENUINBIOTECH.COM
FAX: +1-540-855-7041

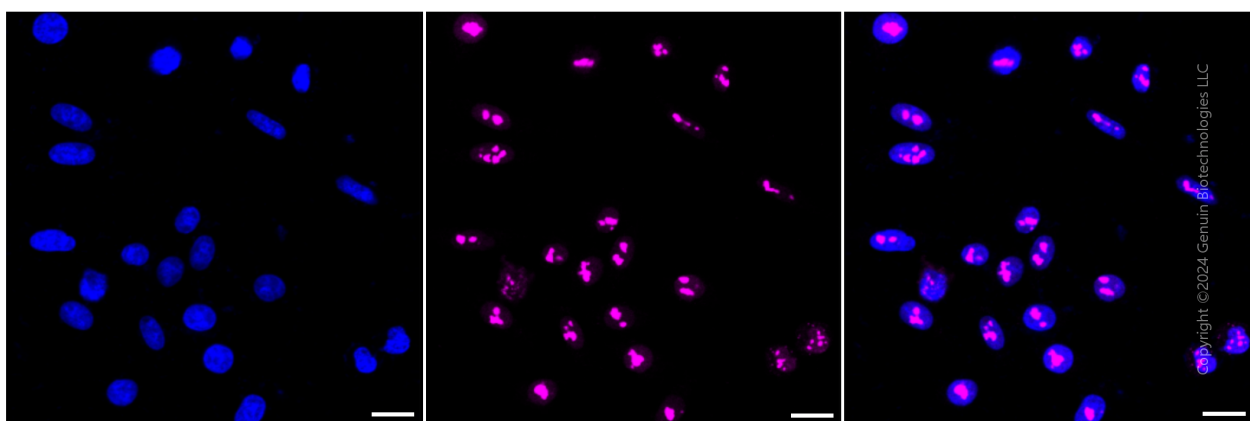
WWW.GENUINBIOTECH.COM

Validation Data



Copyright ©2024 Genuin Biotechnologies LLC

Flow cytometric analysis of N-acetyltransferase 10 expression in HepG2 cells using anti-N-acetyltransferase 10 antibody (Cat#2260, 1:2,000). Green, isotype control; red, N-acetyltransferase 10.



Copyright ©2024 Genuin Biotechnologies LLC

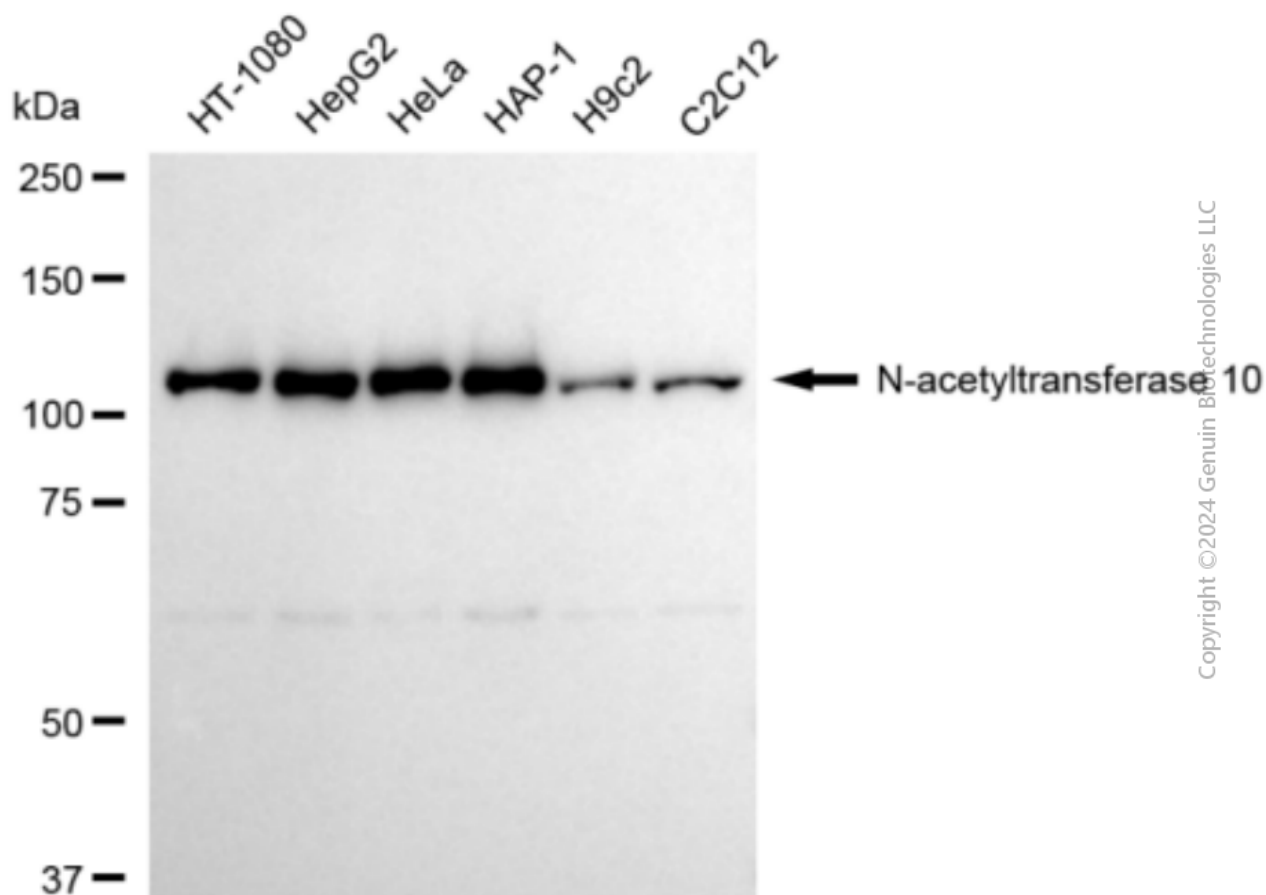
SUPPORT

SUPPORT@GENUINBIOTECH.COM
TEL: +1-540-855-7041

ORDERS

SALES@GENUINBIOTECH.COM
FAX: +1-540-855-7041

WWW.GENUINBIOTECH.COM



Copyright ©2024 Genuin Biotechnologies LLC

Western blotting analysis using anti-N-acetyltransferase 10 antibody (Cat#2260). Total cell lysates (30 µg) from various cell lines were loaded and separated by SDS-PAGE. The blot was incubated with anti-N-acetyltransferase 10 antibody (Cat#2260, 1:5,000) and HRP-conjugated goat anti-rabbit secondary antibody (Cat#201, 1:20,000) respectively. Image was developed using FeQ™ ECL Substrate Kit (Cat#226).