

Anti-Mediator Complex Subunit 4 Recombinant Rabbit Monoclonal Antibody



Catalog #: 2265

Aliases

MED4; Mediator Complex Subunit 4; DRIP36; HSPC126; TRAP36; VDRIP; Vitamin D3 Receptor-Interacting Protein Complex 36 KDa Component; Mediator Of RNA Polymerase II Transcription Subunit 4; Activator-Recruited Cofactor 36 KDa Component; ARC36; Mediator Of RNA Polymerase II Transcription, Subunit 4 Homolog (S. Cerevisiae); Vitamin D Receptor-Interacting Protein, 36-KD; Vitamin D Receptor Interacting Protein; TRAP/SMCC/PC2 Subunit P36 Subunit; Mediator, 34-KD Subunit, Homolog

Background

Gene Name: MED4

NCBI Gene Entry: [29079](#)

UniProt Entry: [Q9NPJ6](#)

Application Information

Molecular Weight: Predicted, 30 kDa; observed, 35 kDa

Clonality: Rabbit monoclonal antibody

Clone ID: 24GB40

Species Reactivity: Human, mouse, rat

Applications Tested: Western blotting (WB), flow cytometry (FCM), immunocytochemistry (IC)

Immunogen

A synthesized peptide derived from human MED4

Isotype

Rabbit IgG

Storage Buffer

Supplied in PBS (pH 7.4) containing 50% glycerol, and 0.02% sodium azide.

Storage

Store at -20 °C for one year.

Recommended Dilutions

Western Blotting (WB): 1:1,000-1:5,000

Flow Cytometry (FCM): 1:2,000

Immunocytochemistry (IC): 1:100-1:1,000

SUPPORT

SUPPORT@GENUINBIOTECH.COM
TEL: +1-540-855-7041

ORDERS

SALES@GENUINBIOTECH.COM
FAX: +1-540-855-7041

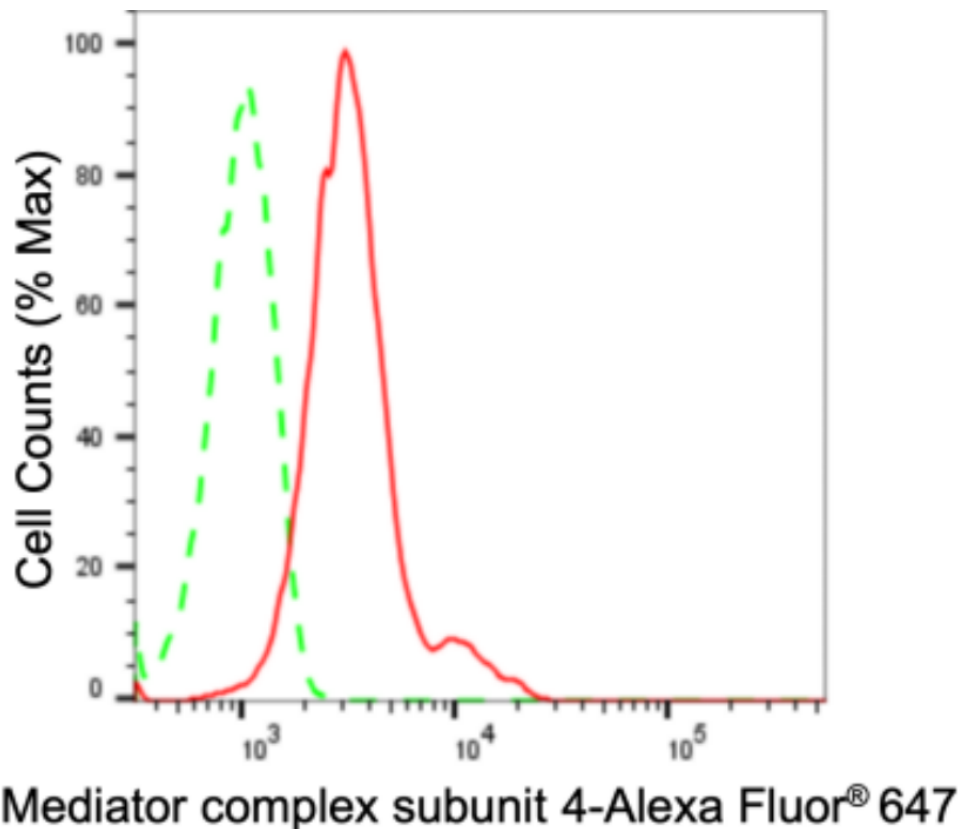
WWW.GENUINBIOTECH.COM

Anti-Mediator Complex Subunit 4 Recombinant Rabbit Monoclonal Antibody

PAGE 2

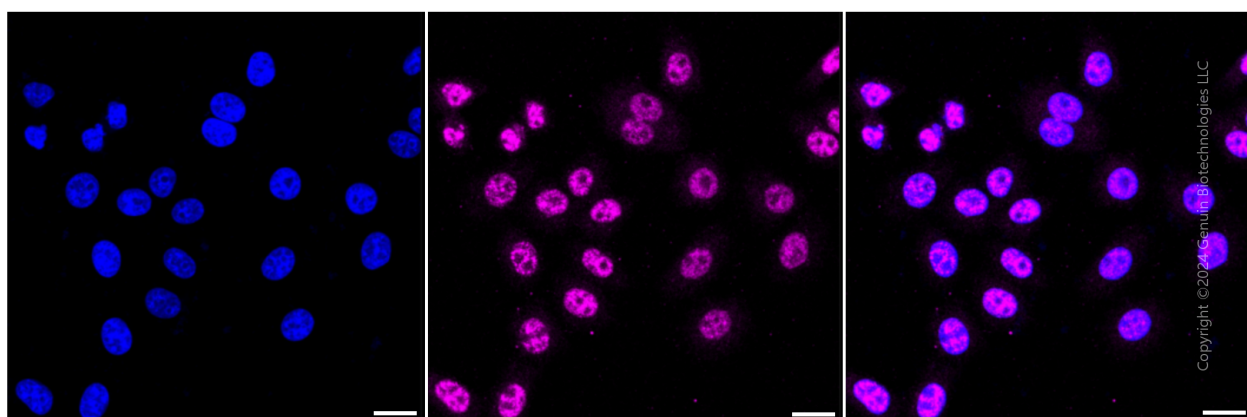
Note: This product is for research use only.

Validation Data



Copyright ©2024 Genuin Biotechnologies LLC

Flow cytometric analysis of Mediator complex subunit 4 expression in HepG2 cells using Mediator complex subunit 4 antibody (Cat#2265, 1:2,000). Green, isotype control; red, Mediator complex subunit 4.



Immunocytochemical staining of HepG2 cells with anti-Mediator complex subunit 4 antibody (Cat#2265, 1:1,000). Nuclei were stained blue with DAPI; Mediator complex subunit 4 was stained magenta with Alexa Fluor® 647. Images were taken using Leica stellaris 5. Protein

SUPPORT

SUPPORT@GENUINBIOTECH.COM
TEL: +1-540-855-7041

ORDERS

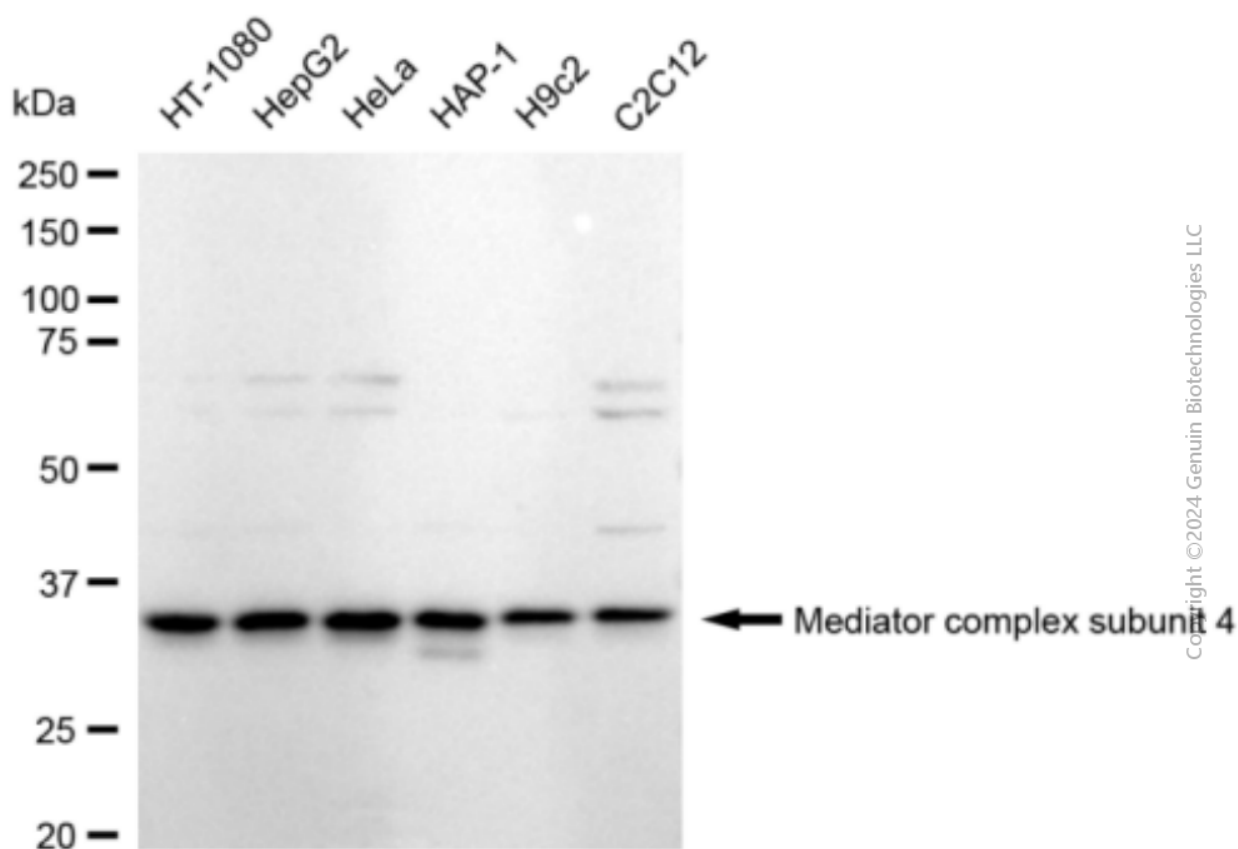
SALES@GENUINBIOTECH.COM
FAX: +1-540-855-7041

WWW.GENUINBIOTECH.COM

Anti-Mediator Complex Subunit 4 Recombinant Rabbit Monoclonal Antibody

PAGE 3

abundance based on laser Intensity and smart gain: Medium. Scale bar: 20 μ m.



Western blotting analysis using anti-Mediator complex subunit 4 antibody (Cat#2265). Total cell lysates (30 μ g) from various cell lines were loaded and separated by SDS-PAGE. The blot was incubated with anti-Mediator complex subunit 4 antibody (Cat#2265, 1:5,000) and HRP-conjugated goat anti-rabbit secondary antibody (Cat#201, 1:20,000) respectively. Image was developed using FeQTM ECL Substrate Kit (Cat#226).

SUPPORT

SUPPORT@GENUINBIOTECH.COM
TEL: +1-540-855-7041

ORDERS

SALES@GENUINBIOTECH.COM
FAX: +1-540-855-7041

WWW.GENUINBIOTECH.COM