

Anti-Leukotriene B4 Receptor Recombinant Rabbit Monoclonal Antibody



Catalog #: 2268

Aliases

Leukotriene B4 Receptor; BLTR; P2Y7; LTB4R1; CMKRL1; GPR16; P2RY7; Chemoattractant Receptor-Like 1; Leukotriene B4 Receptor 1; P2Y Purinoceptor 7; LTB4-R 1; LTB4-R1; BLT1; Purinergic Receptor P2Y, G-Protein Coupled, 7; G Protein-Coupled Receptor 16; G-Protein Coupled Receptor 16; Chemokine Receptor-Like 1; LTBR1; BLT

Background

Gene Name: LTB4R

NCBI Gene Entry: [1241](#)

UniProt Entry: [Q15722](#)

Application Information

Molecular Weight: Predicted, 38 kDa; observed, 38 kDa

Clonality: Rabbit monoclonal antibody

Clone ID: 24GB50

Species Reactivity: Mouse, rat

Applications Tested: Western blotting (WB), immunocytochemistry (IC)

Immunogen

A synthesized peptide derived from human LTB4R

Isotype

Rabbit IgG

Storage Buffer

Supplied in PBS (pH 7.4) containing 50% glycerol, and 0.02% sodium azide.

Storage

Store at -20 °C for one year.

Recommended Dilutions

Western Blotting (WB): 1:1,000-1:5,000

Immunocytochemistry (IC): 1:100-1:1,000

Note: This product is for research use only.

SUPPORT

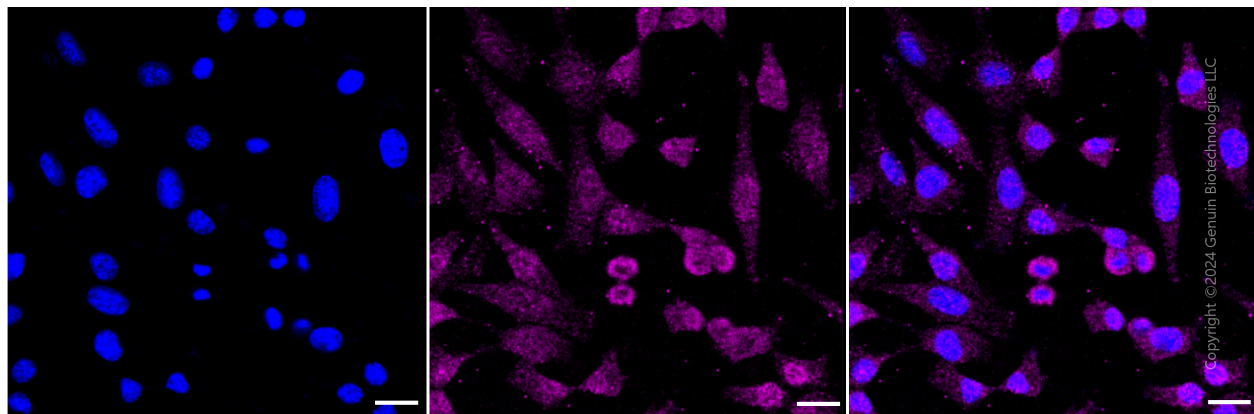
SUPPORT@GENUINBIOTECH.COM
TEL: +1-540-855-7041

ORDERS

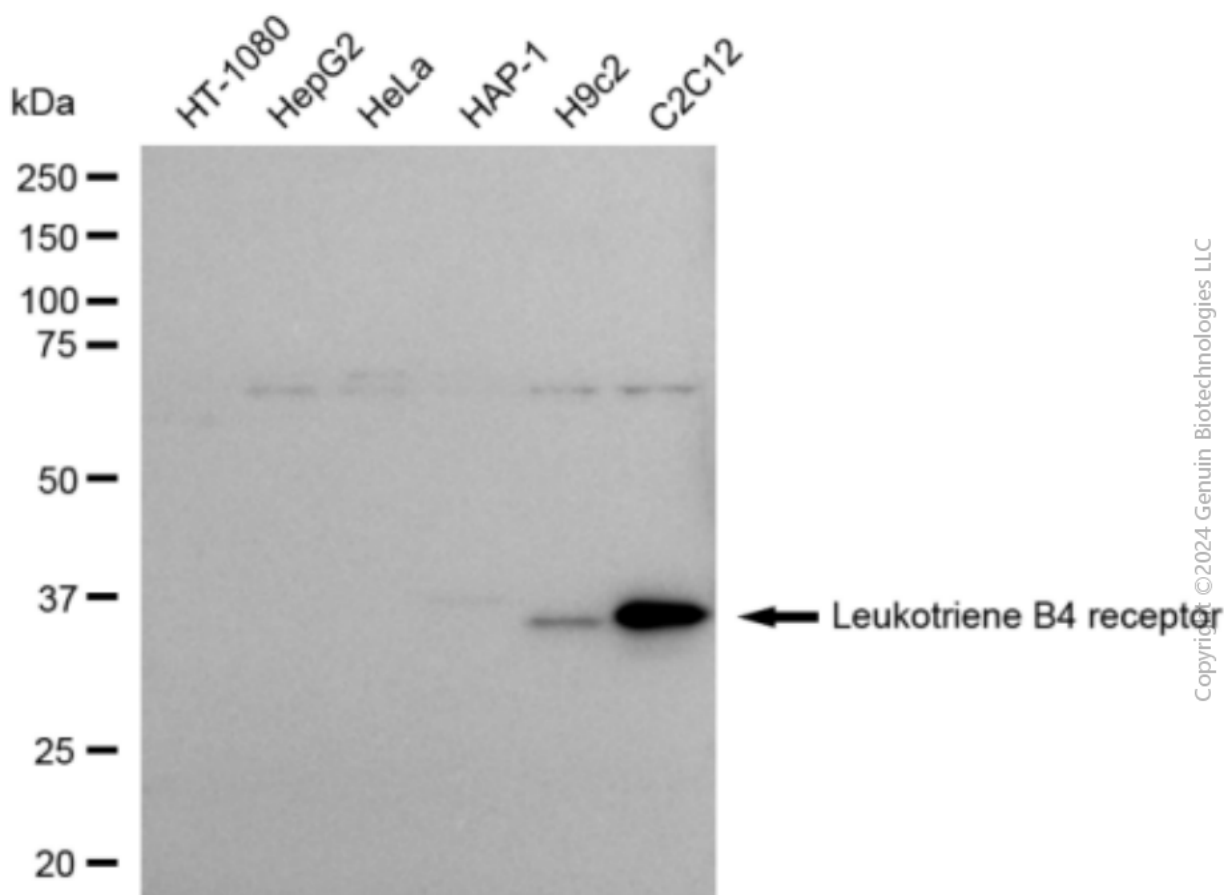
SALES@GENUINBIOTECH.COM
FAX: +1-540-855-7041

WWW.GENUINBIOTECH.COM

Validation Data



Immunocytochemical staining of C2C12 cells with anti-Leukotriene B4 receptor antibody (Cat#2268, 1:1,000). Nuclei were stained blue with DAPI; Leukotriene B4 receptor was stained magenta with Alexa Fluor® 647. Images were taken using Leica stellaris 5. Protein abundance based on laser Intensity and smart gain: Low. Scale bar: 20 μ m.



Western blotting analysis using anti-Leukotriene B4 receptor antibody (Cat#2268). Total cell lysates (30 μ g) from various cell lines were loaded and separated by SDS-PAGE. The blot was

SUPPORT

SUPPORT@GENUINBIOTECH.COM
TEL: +1-540-855-7041

ORDERS

SALES@GENUINBIOTECH.COM
FAX: +1-540-855-7041

WWW.GENUINBIOTECH.COM

Anti-Leukotriene B4 Receptor Recombinant Rabbit Monoclonal Antibody

PAGE 3

incubated with anti-Leukotriene B4 receptor antibody (Cat#2268, 1:5,000) and HRP-conjugated goat anti-rabbit secondary antibody (Cat#201, 1:20,000) respectively. Image was developed using FeQ™ ECL Substrate Kit (Cat#226).

SUPPORT

SUPPORT@GENUINBIOTECH.COM
TEL: +1-540-855-7041

ORDERS

SALES@GENUINBIOTECH.COM
FAX: +1-540-855-7041

WWW.GENUINBIOTECH.COM