

Anti-Myosin Light Chain 12B Recombinant Rabbit Monoclonal Antibody



Catalog #: 2271

Aliases

Myosin Light Chain 12B; MRLC2; Myosin Regulatory Light Chain 20 kDa; Myosin, Light Chain 12B, Regulatory; Myosin Regulatory Light Chain MRLC2; Myosin Regulatory Light Chain 12B; Myosin Regulatory Light Chain 2; SHUJUN-1; MLC-2A; MLC-2; MLC20; Myosin Regulatory Light Chain 2-B, Smooth Muscle Isoform; MYLC2B; MLC-B

Background

Gene Name: MYL12B

NCBI Gene Entry: [103910](#)

UniProt Entry: [O14950](#)

Application Information

Molecular Weight: Predicted, 20 kDa; observed, 18 kDa

Clonality: Rabbit monoclonal antibody

Clone ID: 24GB65

Species Reactivity: Human, mouse, rat

Applications Tested: Western blotting (WB), flow cytometry (FCM), immunocytochemistry (IC)

Immunogen

A synthesized peptide derived from human MYL12B

Isotype

Rabbit IgG

Storage Buffer

Supplied in PBS (pH 7.4) containing 50% glycerol, and 0.02% sodium azide.

Storage

Store at -20 °C for one year.

Recommended Dilutions

Western Blotting (WB): 1:1,000-1:5,000

Flow Cytometry (FCM): 1:2,000

Immunocytochemistry (IC): 1:100-1:1,000

SUPPORT

SUPPORT@GENUINBIOTECH.COM
TEL: +1-540-855-7041

ORDERS

SALES@GENUINBIOTECH.COM
FAX: +1-540-855-7041

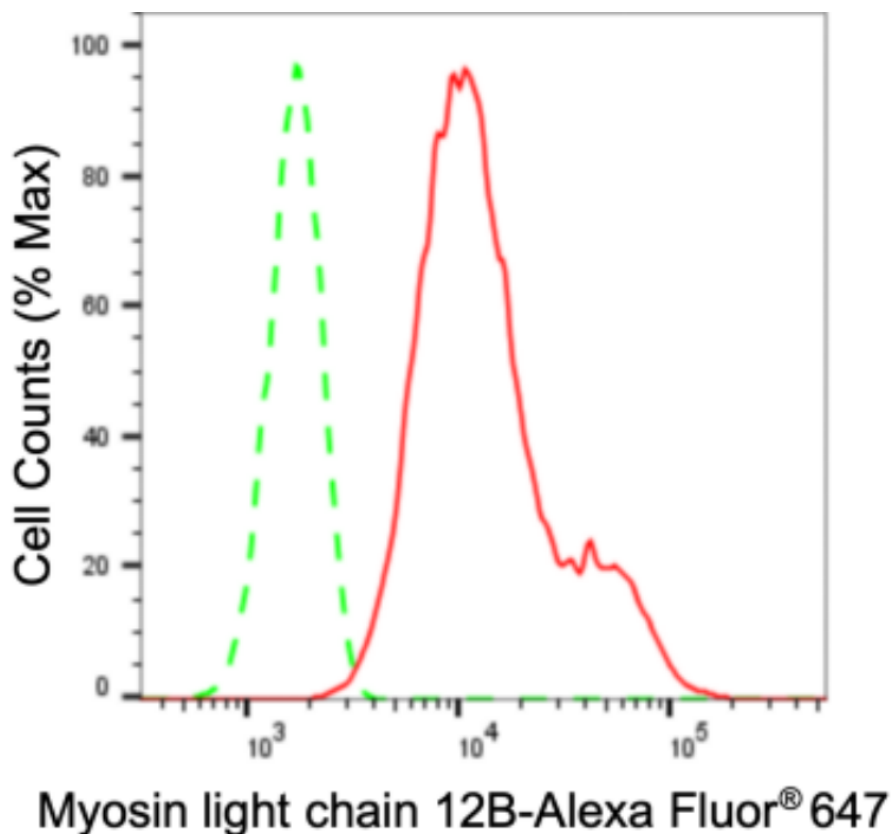
WWW.GENUINBIOTECH.COM

Anti-Myosin Light Chain 12B Recombinant Rabbit Monoclonal Antibody

PAGE 2

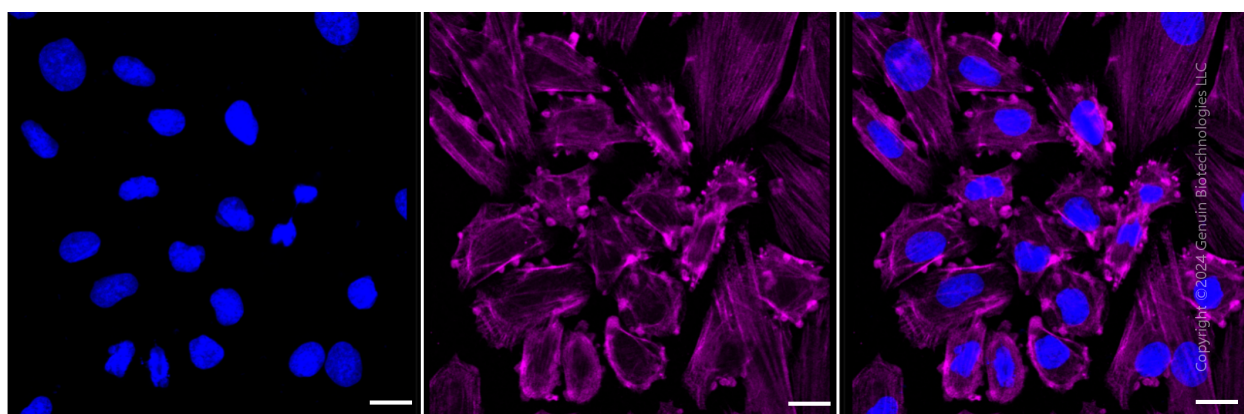
Note: This product is for research use only.

Validation Data



Copyright ©2024 Genuin Biotechnologies LLC

Flow cytometric analysis of Myosin light chain 12B expression in H9c2 cells using Myosin light chain 12B antibody (Cat#2271, 1:2,000). Green, isotype control; red, Myosin light chain 12B.



Immunocytochemical staining of H9C2 cells with anti-Myosin light chain 12B antibody (Cat#2271, 1:1,000). Nuclei were stained blue with DAPI; Myosin light chain 12B was stained magenta with Alexa Fluor® 647. Images were taken using Leica stellaris 5. Protein abundance based on laser Intensity and smart gain: High. Scale bar: 20 μ m.

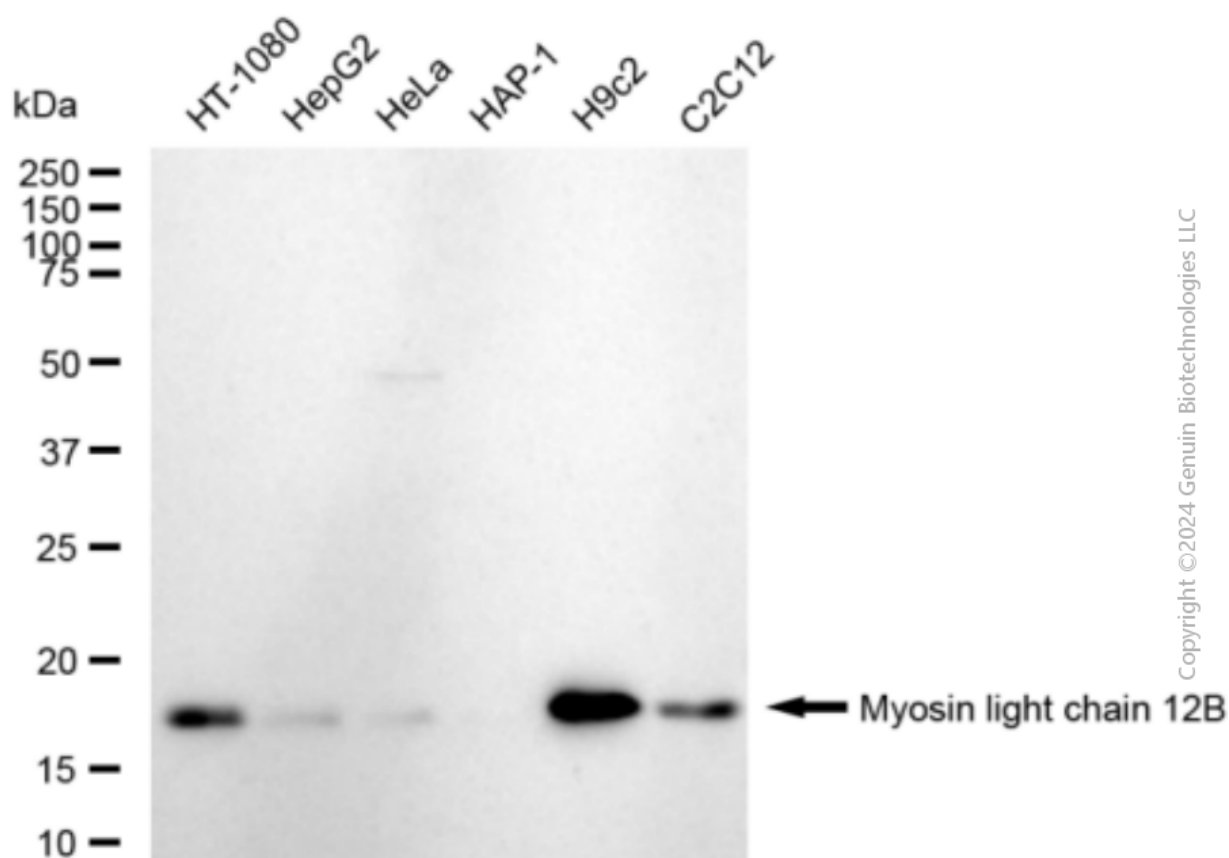
SUPPORT

SUPPORT@GENUINBIOTECH.COM
TEL: +1-540-855-7041

ORDERS

SALES@GENUINBIOTECH.COM
FAX: +1-540-855-7041

WWW.GENUINBIOTECH.COM



Western blotting analysis using anti-Myosin light chain 12B antibody (Cat#2271). Total cell lysates (30 μ g) from various cell lines were loaded and separated by SDS-PAGE. The blot was incubated with anti-Myosin light chain 12B antibody (Cat#2271, 1:5,000) and HRP-conjugated goat anti-rabbit secondary antibody (Cat#201, 1:20,000) respectively. Image was developed using FeQ™ ECL Substrate Kit (Cat#226).