

Anti-NIF3L1 Recombinant Rabbit Monoclonal Antibody



Catalog #: 2274

Aliases

NGG1 Interacting Factor 3 Like 1; ALS2CR1; CALS-7; MDS015; Amyotrophic Lateral Sclerosis 2 Chromosomal Region Candidate Gene 1 Protein; NIF3 (Ngg1 Interacting Factor 3, S.Pombe Homolog)-Like 1; NIF3 NGG1 Interacting Factor 3-Like 1; NIF3-Like Protein 1; Amyotrophic Lateral Sclerosis 2 (Juvenile) Chromosome Region, Candidate 1; NIF3 NGG1 Interacting Factor 3-Like 1 (S. Cerevisiae); NIF3 NGG1 Interacting Factor 3-Like 1 (S. Pombe); Putative GTP Cyclohydrolase 1 Type 2 NIF3L1; GTP Cyclohydrolase I

Background

Gene Name: NIF3L1

NCBI Gene Entry: [60491](#)

UniProt Entry: [Q9GZT8](#)

Application Information

Molecular Weight: Predicted, 42 kDa; observed, 38 kDa

Clonality: Rabbit monoclonal antibody

Clone ID: 24GB80

Species Reactivity: Human

Applications Tested: Western blotting (WB), flow cytometry (FCM), immunocytochemistry (IC)

Immunogen

A synthesized peptide derived from human ALS2CR1

Isotype

Rabbit IgG

Storage Buffer

Supplied in PBS (pH 7.4) containing 50% glycerol, and 0.02% sodium azide.

Storage

Store at -20 °C for one year.

Recommended Dilutions

Western Blotting (WB): 1:1,000-1:5,000

Flow Cytometry (FCM): 1:2,000

Immunocytochemistry (IC): 1:100-1:1,000

SUPPORT

SUPPORT@GENUINBIOTECH.COM
TEL: +1-540-855-7041

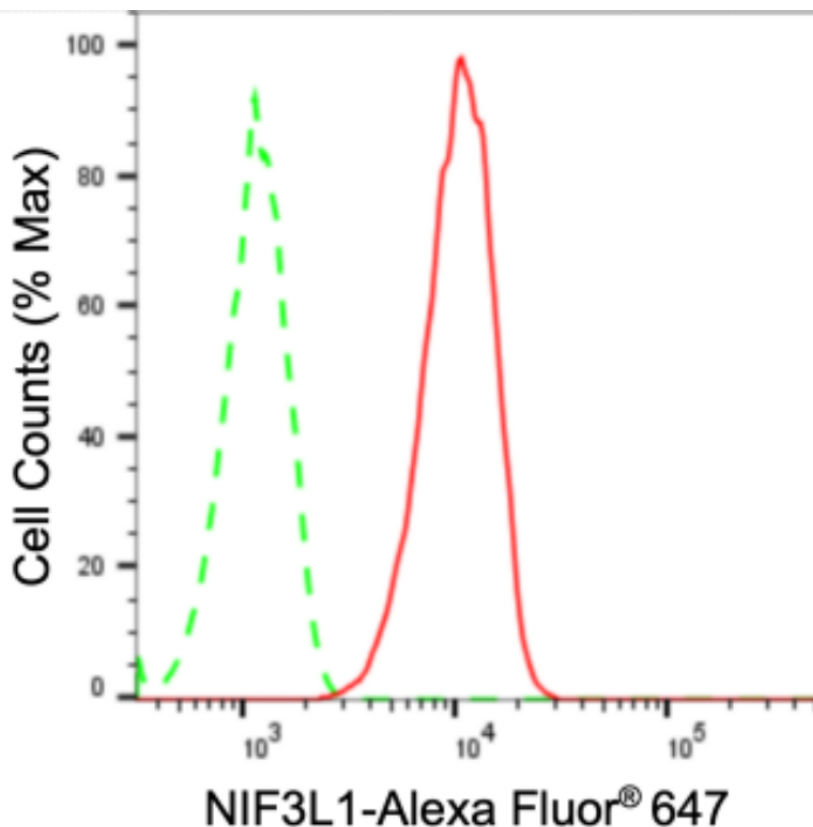
ORDERS

SALES@GENUINBIOTECH.COM
FAX: +1-540-855-7041

WWW.GENUINBIOTECH.COM

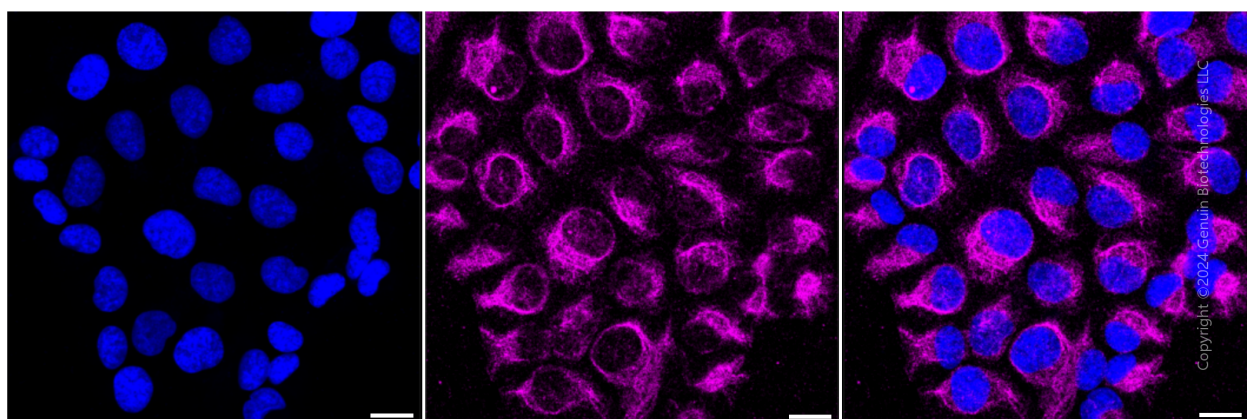
Note: This product is for research use only.

Validation Data



Copyright ©2024 Genuin Biotechnologies LLC

Flow cytometric analysis of NIF3L1 expression in HT-1080 cells using anti-NIF3L1 antibody (Cat#2274, 1:2,000). Green, isotype control; red, NIF3L1.



Copyright ©2024 Genuin Biotechnologies LLC

Immunocytochemical staining of HT-1080 cells with anti-NIF3L1 antibody (Cat#2274, 1:1,000). Nuclei were stained blue with DAPI; NIF3L1 was stained magenta with Alexa Fluor® 647. Images were taken using Leica stellaris 5. Protein abundance based on laser Intensity and smart gain: Medium. Scale bar: 20 μ m.

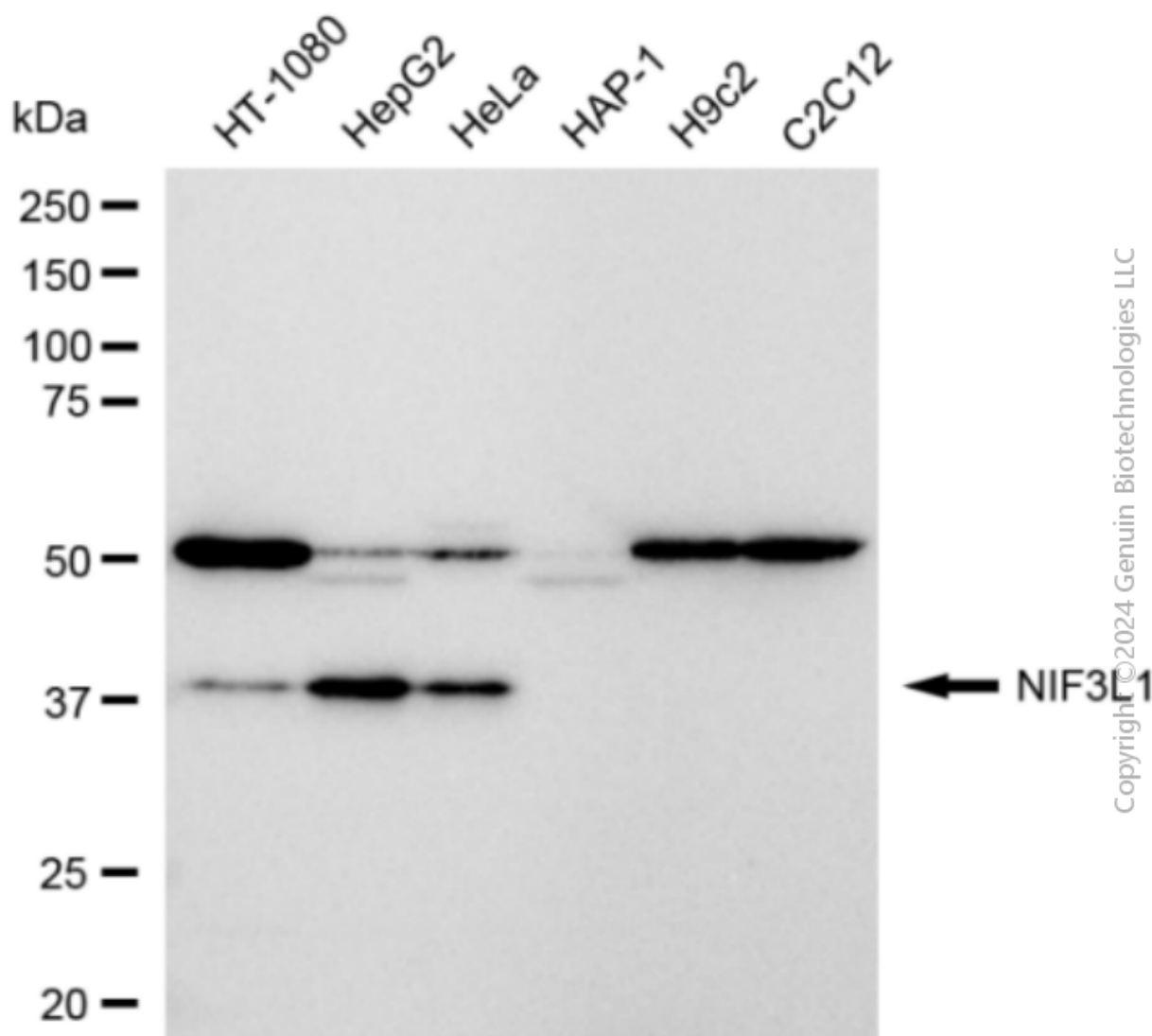
SUPPORT

SUPPORT@GENUINBIOTECH.COM
TEL: +1-540-855-7041

ORDERS

SALES@GENUINBIOTECH.COM
FAX: +1-540-855-7041

WWW.GENUINBIOTECH.COM



Copyright © 2024 Genuin Biotechnologies LLC

Western blotting analysis using anti-NIF3L1 antibody (Cat#2274). Total cell lysates (30 µg) from various cell lines were loaded and separated by SDS-PAGE. The blot was incubated with anti-NIF3L1 antibody (Cat#2274, 1:5,000) and HRP-conjugated goat anti-rabbit secondary antibody (Cat#201, 1:20,000) respectively. Image was developed using FeQ™ ECL Substrate Kit (Cat#226).