

# Anti-Phospho-Nucleophosmin (T199) Recombinant Rabbit Monoclonal Antibody



**Catalog #: 2277**

## Aliases

Nucleophosmin 1; NPM; Nucleophosmin; B23; Nucleophosmin (Nucleolar Phosphoprotein B23, Numatrin); Nucleophosmin/Nucleoplasmin Family, Member 1; Nucleolar Phosphoprotein B23; Nucleolar Protein NO38; Numatrin; Testicular Tissue Protein Li 128

## Background

Gene Name: NPM1

NCBI Gene Entry: [4869](#)

UniProt Entry: [P06748](#)

## Application Information

Molecular Weight: Predicted, 33 kDa; observed, 37 kDa

Clonality: Rabbit monoclonal antibody

Clone ID: 24GB95

Species Reactivity: Human, mouse, rat

Applications Tested: Western blotting (WB), flow cytometry (FCM), immunocytochemistry (IC)

## Immunogen

A synthesized peptide derived from human Phospho-Nucleophosmin (T199)

## Isotype

Rabbit IgG

## Storage Buffer

Supplied in PBS (pH 7.4) containing 50% glycerol, and 0.02% sodium azide.

## Storage

Store at -20 °C for one year.

## Recommended Dilutions

Western Blotting (WB): 1:1,000-1:5,000

Flow Cytometry (FCM): 1:2,000

Immunocytochemistry (IC): 1:100-1:1,000

**Note:** This product is for research use only.

---

### SUPPORT

SUPPORT@GENUINBIOTECH.COM  
TEL: +1-540-855-7041

### ORDERS

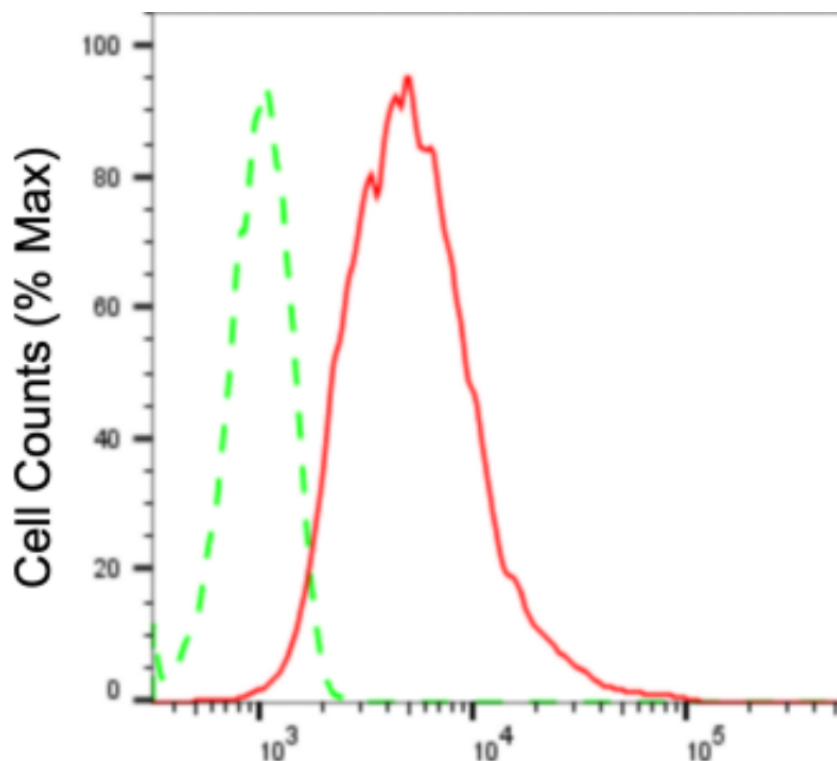
SALES@GENUINBIOTECH.COM  
FAX: +1-540-855-7041

[WWW.GENUINBIOTECH.COM](http://WWW.GENUINBIOTECH.COM)

# Anti-Phospho-Nucleophosmin (T199) Recombinant Rabbit Monoclonal Antibody

PAGE 2

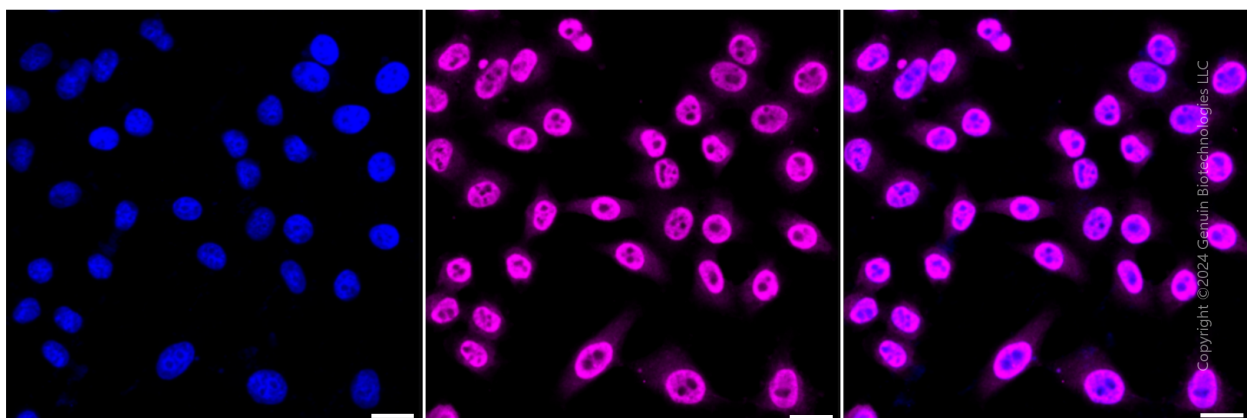
## Validation Data



Copyright ©2024 Genuin Biotechnologies LLC

### Phospho-Nucleophosmin (T199)-Alexa Fluor® 647

Flow cytometric analysis of Phospho-Nucleophosmin (T199) expression in HepG2 cells using Phospho-Nucleophosmin (T199) antibody (Cat#2277, 1:2,000). Green, isotype control; red, Phospho-Nucleophosmin (T199).



Immunocytochemical staining of HepG2 cells with anti-Phospho-Nucleophosmin (T199) antibody (Cat#2277, 1:1,000). Nuclei were stained blue with DAPI; Phospho-Nucleophosmin (T199) was stained magenta with Alexa Fluor® 647. Images were taken using Leica stellaris 5. Protein abundance based on laser Intensity and smart gain: High. Scale bar: 20  $\mu$ m.

#### SUPPORT

SUPPORT@GENUINBIOTECH.COM  
TEL: +1-540-855-7041

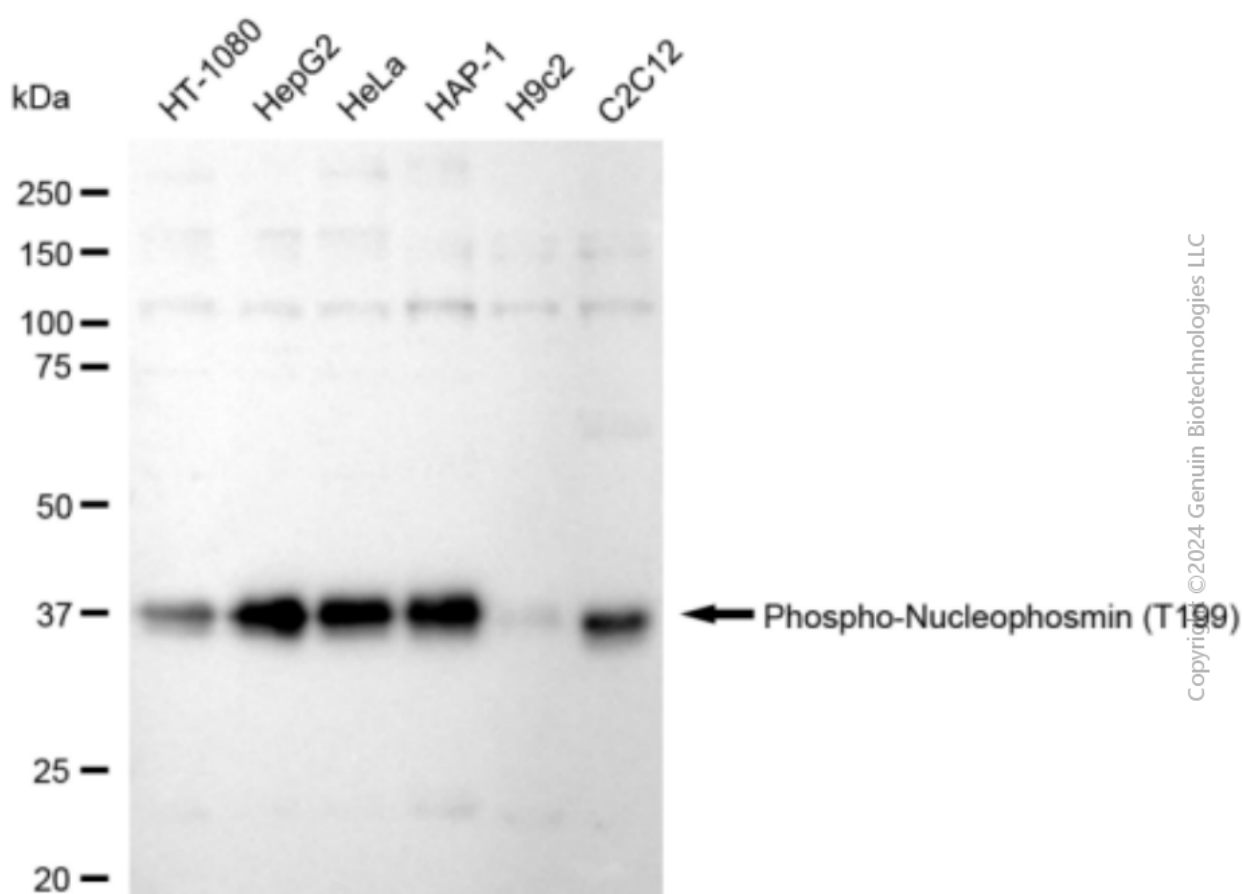
#### ORDERS

SALES@GENUINBIOTECH.COM  
FAX: +1-540-855-7041

WWW.GENUINBIOTECH.COM

## Anti-Phospho-Nucleophosmin (T199) Recombinant Rabbit Monoclonal Antibody

PAGE 3



Western blotting analysis using anti-Phospho-Nucleophosmin (T199) antibody (Cat#2277). Total cell lysates (30  $\mu$ g) from various cell lines were loaded and separated by SDS-PAGE. The blot was incubated with anti-Phospho-Nucleophosmin (T199) antibody (Cat#2277, 1:5,000) and HRP-conjugated goat anti-rabbit secondary antibody (Cat#201, 1:20,000) respectively. Image was developed using FeQ<sup>TM</sup> ECL Substrate Kit (Cat#226).

### SUPPORT

SUPPORT@GENUINBIOTECH.COM  
TEL: +1-540-855-7041

### ORDERS

SALES@GENUINBIOTECH.COM  
FAX: +1-540-855-7041

[WWW.GENUINBIOTECH.COM](http://WWW.GENUINBIOTECH.COM)