

Anti-NEDD4 Binding Protein 1 Recombinant Rabbit Monoclonal Antibody



Catalog #: 2282

Aliases

NEDD4 Binding Protein 1; NEDD4-Binding Protein 1; EC 3.1.-.-; KIAA0615

Background

Gene Name: N4BP1

NCBI Gene Entry: [9683](#)

UniProt Entry: [O75113](#)

Application Information

Molecular Weight: Predicted, 100 kDa; observed, 110 kDa

Clonality: Rabbit monoclonal antibody

Clone ID: 24GB120

Species Reactivity: Mouse, rat

Applications Tested: Western blotting (WB), flow cytometry (FCM), immunocytochemistry (IC)

Immunogen

A synthesized peptide derived from mouse N4BP1

Isotype

Rabbit IgG

Storage Buffer

Supplied in PBS (pH 7.4) containing 50% glycerol, and 0.02% sodium azide.

Storage

Store at -20 °C for one year.

Recommended Dilutions

Western Blotting (WB): 1:1,000-1:5,000

Flow Cytometry (FCM): 1:2,000

Immunocytochemistry (IC): 1:100-1:1,000

Note: This product is for research use only.

Validation Data

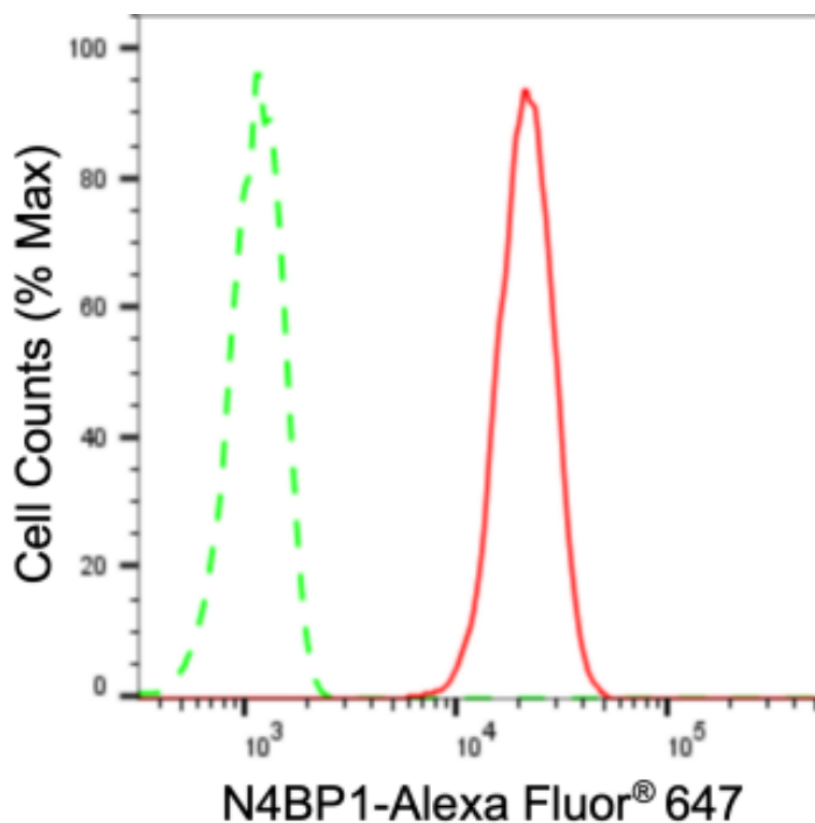
SUPPORT

SUPPORT@GENUINBIOTECH.COM
TEL: +1-540-855-7041

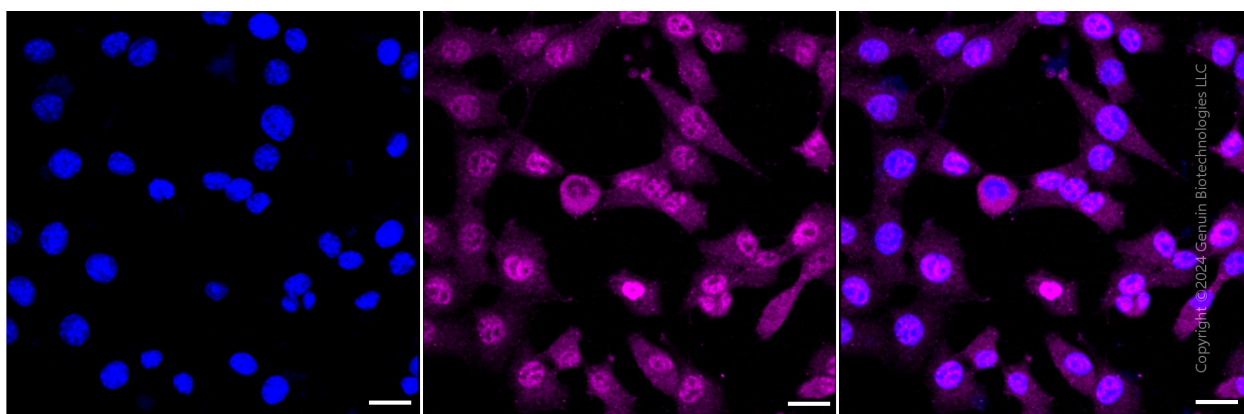
ORDERS

SALES@GENUINBIOTECH.COM
FAX: +1-540-855-7041

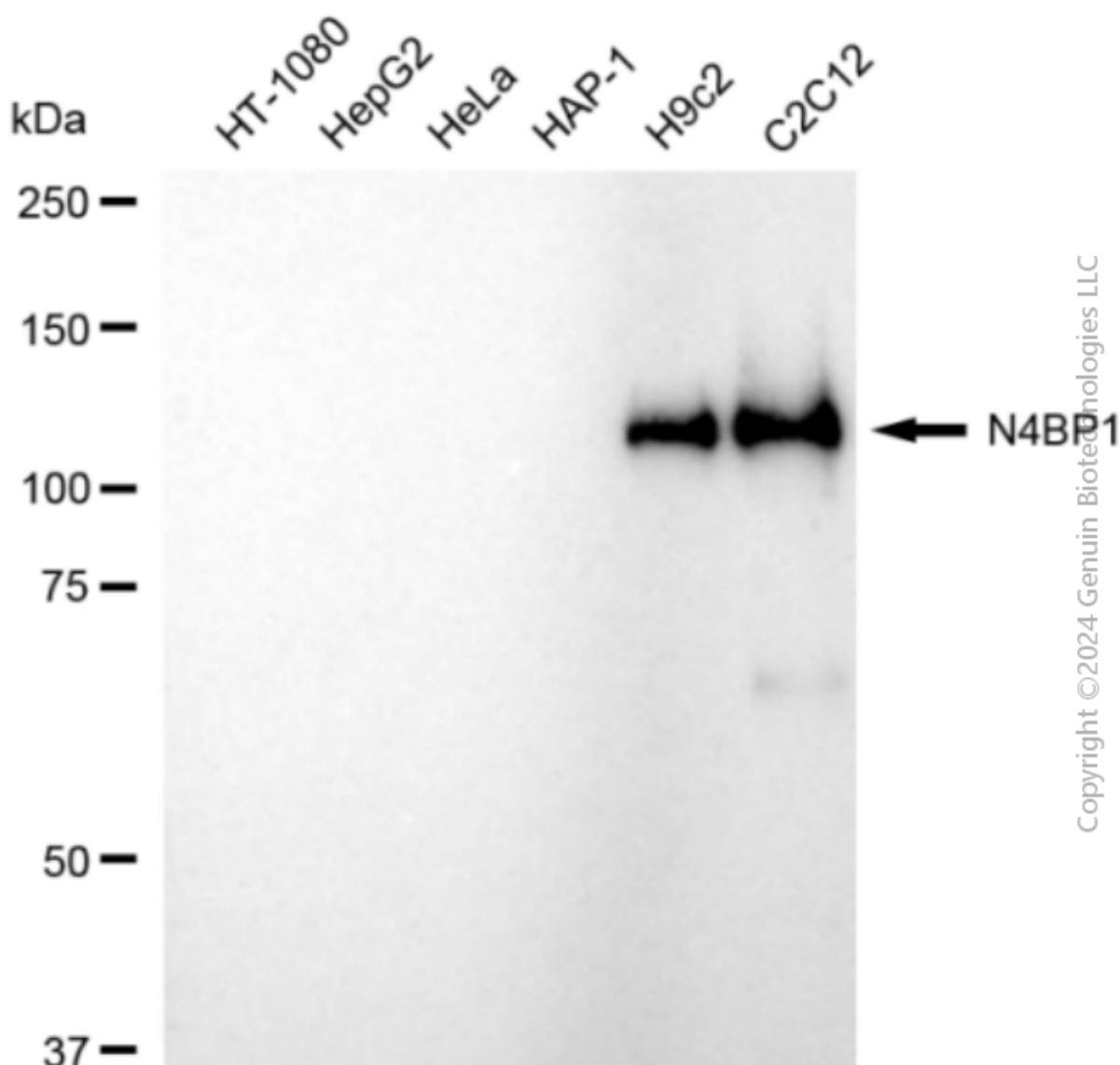
WWW.GENUINBIOTECH.COM



Flow cytometric analysis of N4BP1 expression in C2C12 cells using N4BP1 antibody (Cat#2282, 1:2,000). Green, isotype control; red, N4BP1.



Immunocytochemical staining of C2C12 cells with anti-N4BP1 antibody (Cat#2282, 1:1,000). Nuclei were stained blue with DAPI; N4BP1 was stained magenta with Alexa Fluor® 647. Images were taken using Leica stellaris 5. Protein abundance based on laser Intensity and smart gain: Medium. Scale bar: 20 μ m.



Western blotting analysis using anti-N4BP1 antibody (Cat#2282). Total cell lysates (30 μ g) from various cell lines were loaded and separated by SDS-PAGE. The blot was incubated with anti-N4BP1 antibody (Cat#2282, 1:5,000) and HRP-conjugated goat anti-rabbit secondary antibody (Cat#201, 1:20,000) respectively. Image was developed using FeQ™ ECL Substrate Kit (Cat#226).