

Anti-Nucleoporin 50 Recombinant Rabbit Monoclonal Antibody



Catalog #: 2285

Aliases

Nucleoporin 50; NPAP60L; Nuclear Pore Complex Protein Nup50; 50 KDa Nucleoporin; Nucleoporin 50kDa; Nucleoporin Nup50; Nuclear Pore-Associated Protein 60 KDa-Like; Nuclear Pore-Associated Protein 60L; Nucleoporin 50kD; NPAP60

Background

Gene Name: NUP50

NCBI Gene Entry: [10762](#)

UniProt Entry: [Q9UKX7](#)

Application Information

Molecular Weight: Predicted, 50 kDa; observed, 55 kDa

Clonality: Rabbit monoclonal antibody

Clone ID: 24GB135

Species Reactivity: Human, mouse, rat

Applications Tested: Western blotting (WB), flow cytometry (FCM), immunocytochemistry (IC)

Immunogen

A synthesized peptide derived from human NUP50

Isotype

Rabbit IgG

Storage Buffer

Supplied in PBS (pH 7.4) containing 50% glycerol, and 0.02% sodium azide.

Storage

Store at -20 °C for one year.

Recommended Dilutions

Western Blotting (WB): 1:1,000-1:5,000

Flow Cytometry (FCM): 1:2,000

Immunocytochemistry (IC): 1:100-1:1,000

Note: This product is for research use only.

SUPPORT

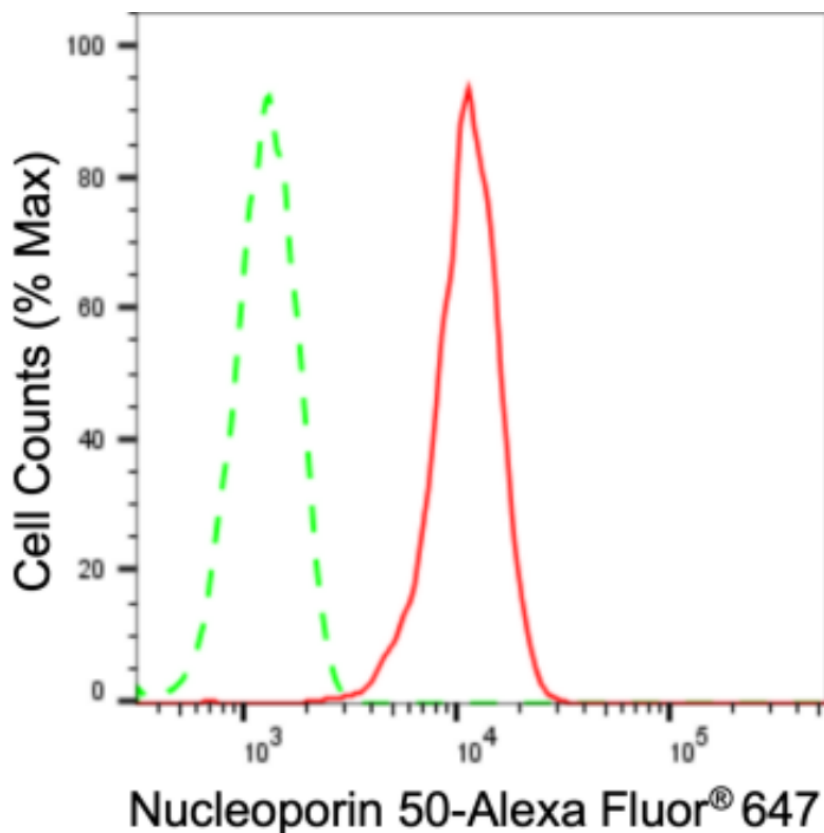
SUPPORT@GENUINBIOTECH.COM
TEL: +1-540-855-7041

ORDERS

SALES@GENUINBIOTECH.COM
FAX: +1-540-855-7041

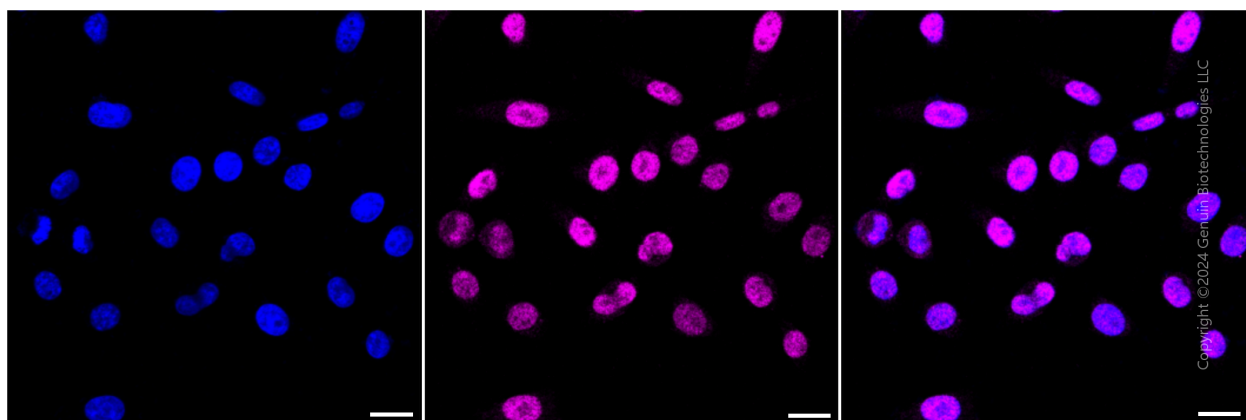
WWW.GENUINBIOTECH.COM

Validation Data



Copyright ©2024 Genuin Biotechnologies LLC

Flow cytometric analysis of Nucleoporin 50 expression in HepG2 cells using anti-Nucleoporin 50 antibody (Cat#2285, 1:2,000). Green, isotype control; red, Nucleoporin 50.



Copyright ©2024 Genuin Biotechnologies LLC

Immunocytochemical staining of HepG2 cells with anti-Nucleoporin 50 antibody (Cat#2285, 1:1,000). Nuclei were stained blue with DAPI; Nucleoporin 50 was stained magenta with Alexa Fluor® 647. Images were taken using Leica stellaris 5. Protein abundance based on laser Intensity and smart gain: Medium. Scale bar: 20 μm.

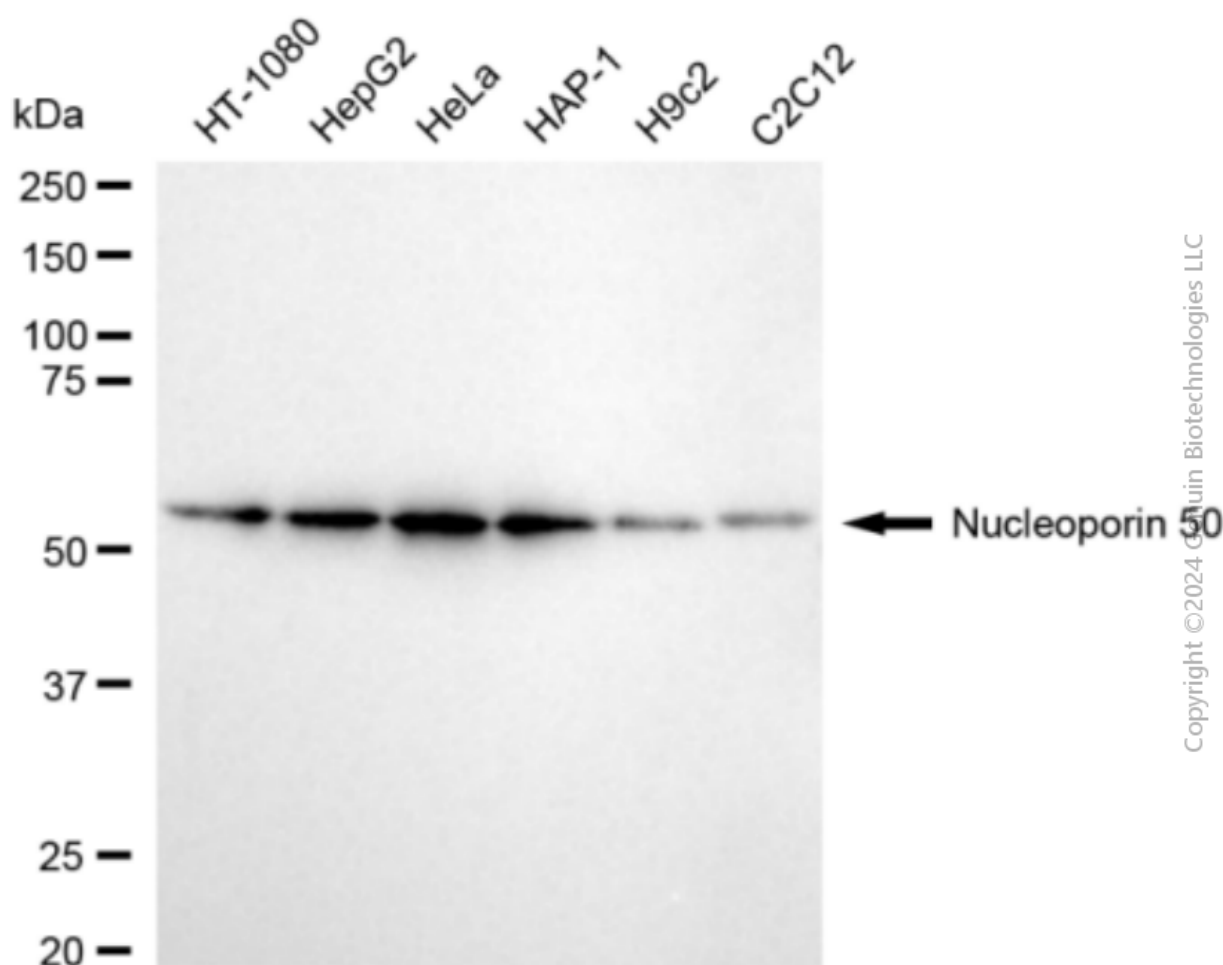
SUPPORT

SUPPORT@GENUINBIOTECH.COM
TEL: +1-540-855-7041

ORDERS

SALES@GENUINBIOTECH.COM
FAX: +1-540-855-7041

WWW.GENUINBIOTECH.COM



Western blotting analysis using anti-Nucleoporin 50 antibody (Cat#2285). Total cell lysates (30 μ g) from various cell lines were loaded and separated by SDS-PAGE. The blot was incubated with anti-Nucleoporin 50 antibody (Cat#2285, 1:5,000) and HRP-conjugated goat anti-rabbit secondary antibody (Cat#201, 1:20,000) respectively. Image was developed using FeQ™ ECL Substrate Kit (Cat#226).