

Anti-MAS1L Recombinant Rabbit Monoclonal Antibody



Catalog #: 2286

Aliases

MAS1 Proto-Oncogene Like, G Protein-Coupled Receptor; MRG; DJ994E9.2; MAS-L; Mas-Related G-Protein Coupled Receptor MRG; MAS1 Oncogene-Like; MAS1-Like; MAS-R; Mas-Related G Protein-Coupled MRG

Background

Gene Name: MAS1L

NCBI Gene Entry: [116511](#)

UniProt Entry: [P35410](#)

Application Information

Molecular Weight: Predicted, 42 kDa; observed, 37 kDa

Clonality: Rabbit monoclonal antibody

Clone ID: 24GB140

Species Reactivity: Human, mouse, rat

Applications Tested: Western blotting (WB), flow cytometry (FCM), immunocytochemistry (IC)

Immunogen

A synthesized peptide derived from human MAS1L

Isotype

Rabbit IgG

Storage Buffer

Supplied in PBS (pH 7.4) containing 50% glycerol, and 0.02% sodium azide.

Storage

Store at -20 °C for one year.

Recommended Dilutions

Western Blotting (WB): 1:1,000-1:5,000

Flow Cytometry (FCM): 1:2,000

Immunocytochemistry (IC): 1:100-1:1,000

Note: This product is for research use only.

SUPPORT

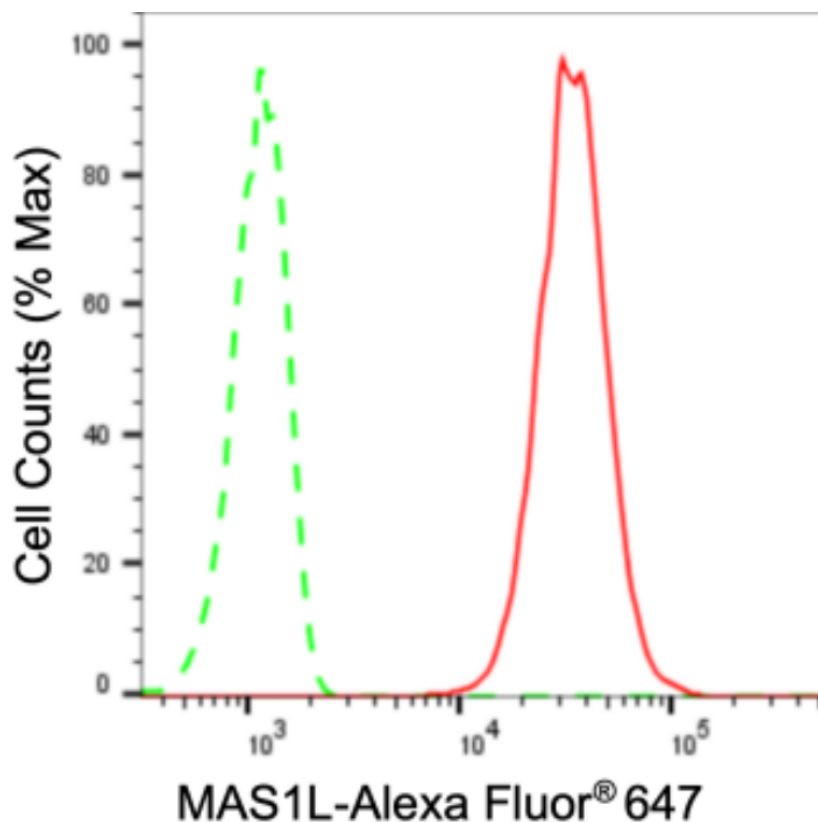
SUPPORT@GENUINBIOTECH.COM
TEL: +1-540-855-7041

ORDERS

SALES@GENUINBIOTECH.COM
FAX: +1-540-855-7041

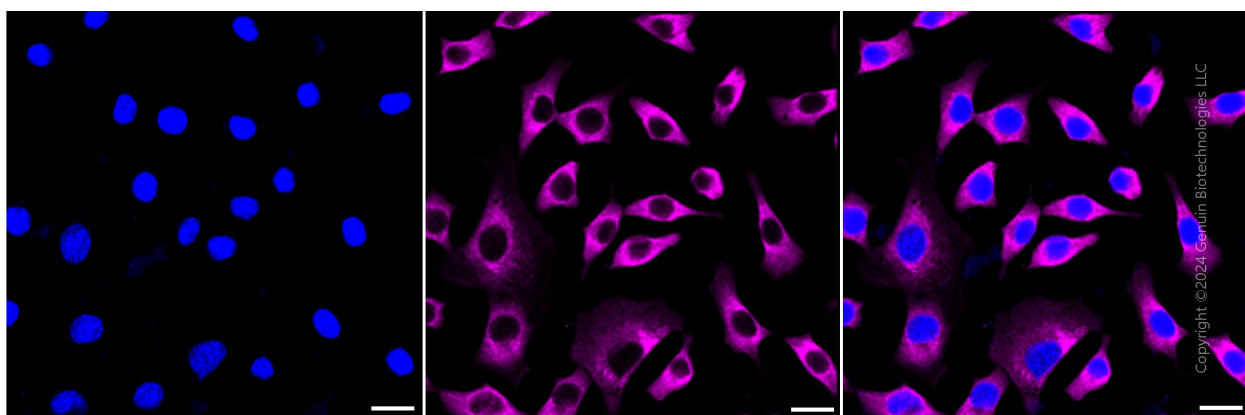
WWW.GENUINBIOTECH.COM

Validation Data



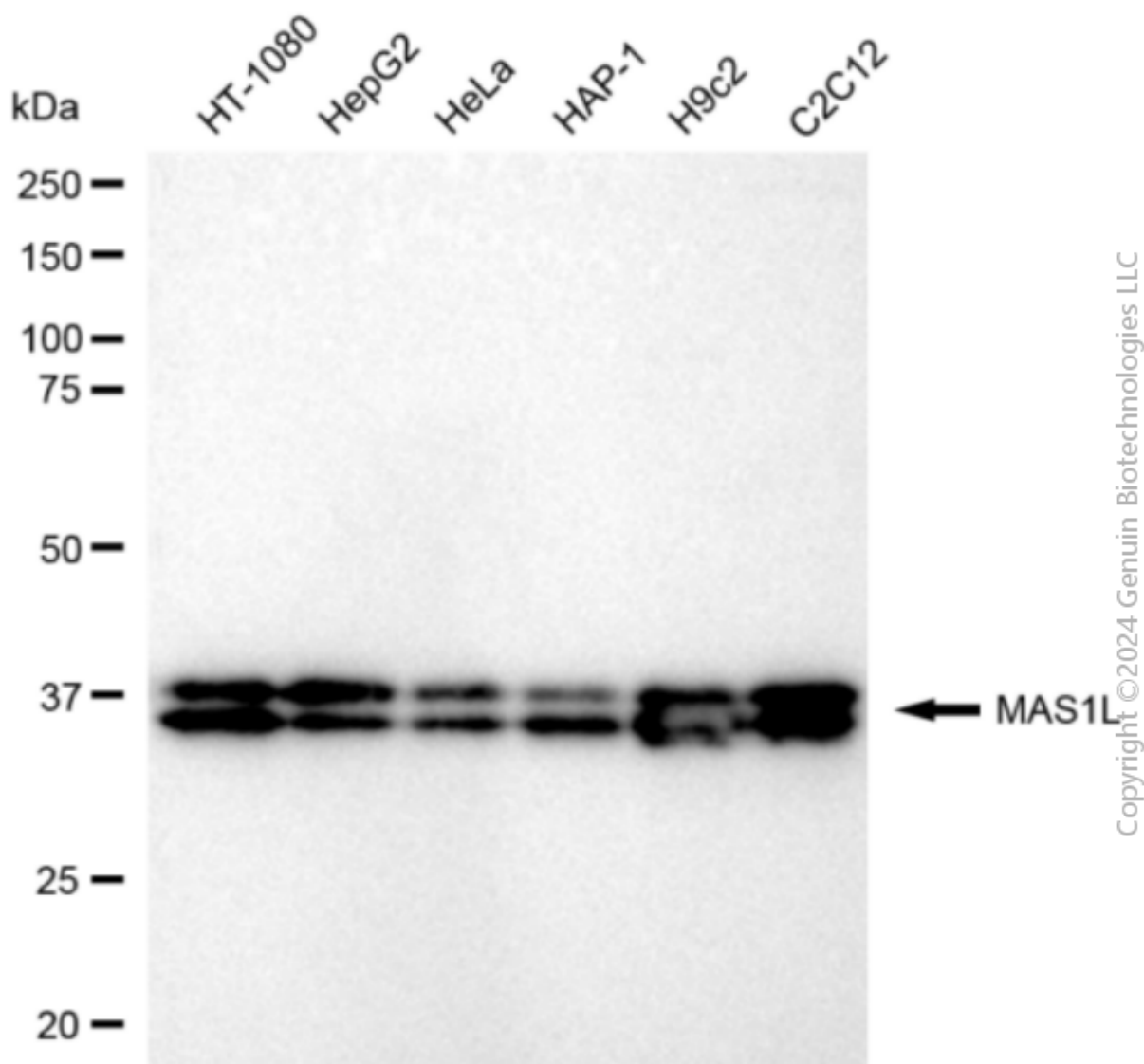
Copyright ©2024 Genuin Biotechnologies LLC

Flow cytometric analysis of MAS1L expression in C2C12 cells using MAS1L antibody (Cat#2286, 1:2,000). Green, isotype control; red, MAS1L.



Copyright ©2024 Genuin Biotechnologies LLC

Immunocytochemical staining of C2C12 cells with anti-MAS1L antibody (Cat#2286, 1:1,000). Nuclei were stained blue with DAPI; MAS1L was stained magenta with Alexa Fluor® 647. Images were taken using Leica stellaris 5. Protein abundance based on laser Intensity and smart gain: High. Scale bar: 20 µm.



Western blotting analysis using anti-MAS1L antibody (Cat#2286). Total cell lysates (30 μ g) from various cell lines were loaded and separated by SDS-PAGE. The blot was incubated with anti-MAS1L antibody (Cat#2286, 1:5,000) and HRP-conjugated goat anti-rabbit secondary antibody (Cat#201, 1:20,000) respectively. Image was developed using FeQ™ ECL Substrate Kit (Cat#226).