

# Anti-OLIG2 Recombinant Rabbit Monoclonal Antibody



**Catalog #: 2291**

## Aliases

Oligodendrocyte Transcription Factor 2; BHLHe19; RACK17; PRKCBP2; OLIGO2; BHLHB1; Oligodendrocyte-Specific BHLH Transcription Factor 2; Basic Domain, Helix-Loop-Helix Protein, Class B, 1; Oligodendrocyte Lineage Transcription Factor 2; Human Protein Kinase C-Binding Protein RACK17; Class E Basic Helix-Loop-Helix Protein 19; Class B Basic Helix-Loop-Helix Protein 1; Protein Kinase C-Binding Protein 2; Protein Kinase C-Binding Protein RACK17; Protein Kinase C Binding Protein 2; BHLHE19; Oligo2; BHLHb1

## Background

Gene Name: OLIG2

NCBI Gene Entry: [10215](#)

UniProt Entry: [Q13516](#)

## Application Information

Molecular Weight: Predicted, 32 kDa; observed, 32 kDa

Clonality: Rabbit monoclonal antibody

Clone ID: 24GB165

Species Reactivity: Human

Applications Tested: Western blotting (WB), immunocytochemistry (IC)

## Immunogen

A synthesized peptide derived from human Olig2

## Isotype

Rabbit IgG

## Storage Buffer

Supplied in PBS (pH 7.4) containing 50% glycerol, and 0.02% sodium azide.

## Storage

Store at -20 °C for one year.

## Recommended Dilutions

Western Blotting (WB): 1:1,000-1:5,000

Immunocytochemistry (IC): 1:100-1:1,000

---

### SUPPORT

SUPPORT@GENUINBIOTECH.COM  
TEL: +1-540-855-7041

### ORDERS

SALES@GENUINBIOTECH.COM  
FAX: +1-540-855-7041

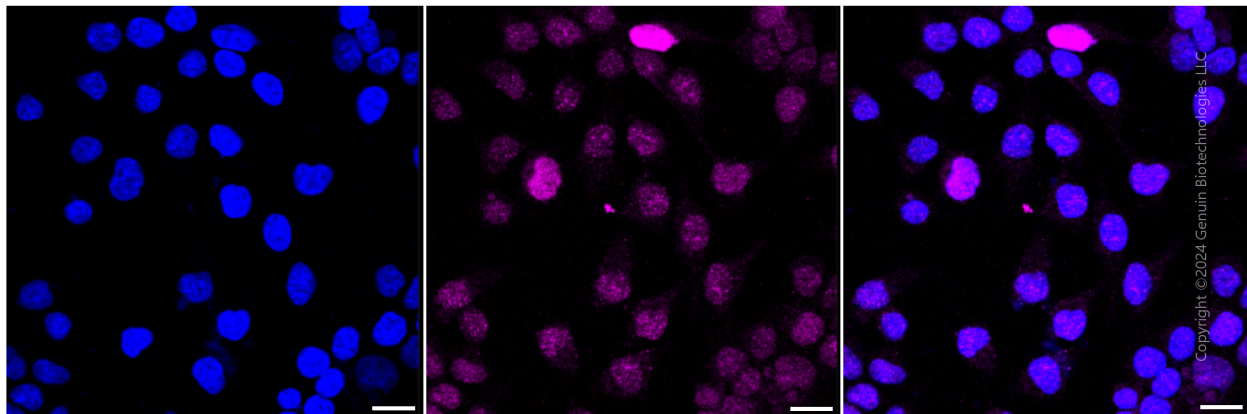
[WWW.GENUINBIOTECH.COM](http://WWW.GENUINBIOTECH.COM)

# Anti-OLIG2 Recombinant Rabbit Monoclonal Antibody

PAGE 2

**Note:** This product is for research use only.

## Validation Data



Immunocytochemical staining of HeLa cells with anti-Olig2 antibody (Cat#2291, 1:1,000). Nuclei were stained blue with DAPI; Olig2 was stained magenta with Alexa Fluor® 647. Images were taken using Leica stellaris 5. Protein abundance based on laser Intensity and smart gain: Medium. Scale bar: 20  $\mu$ m.

---

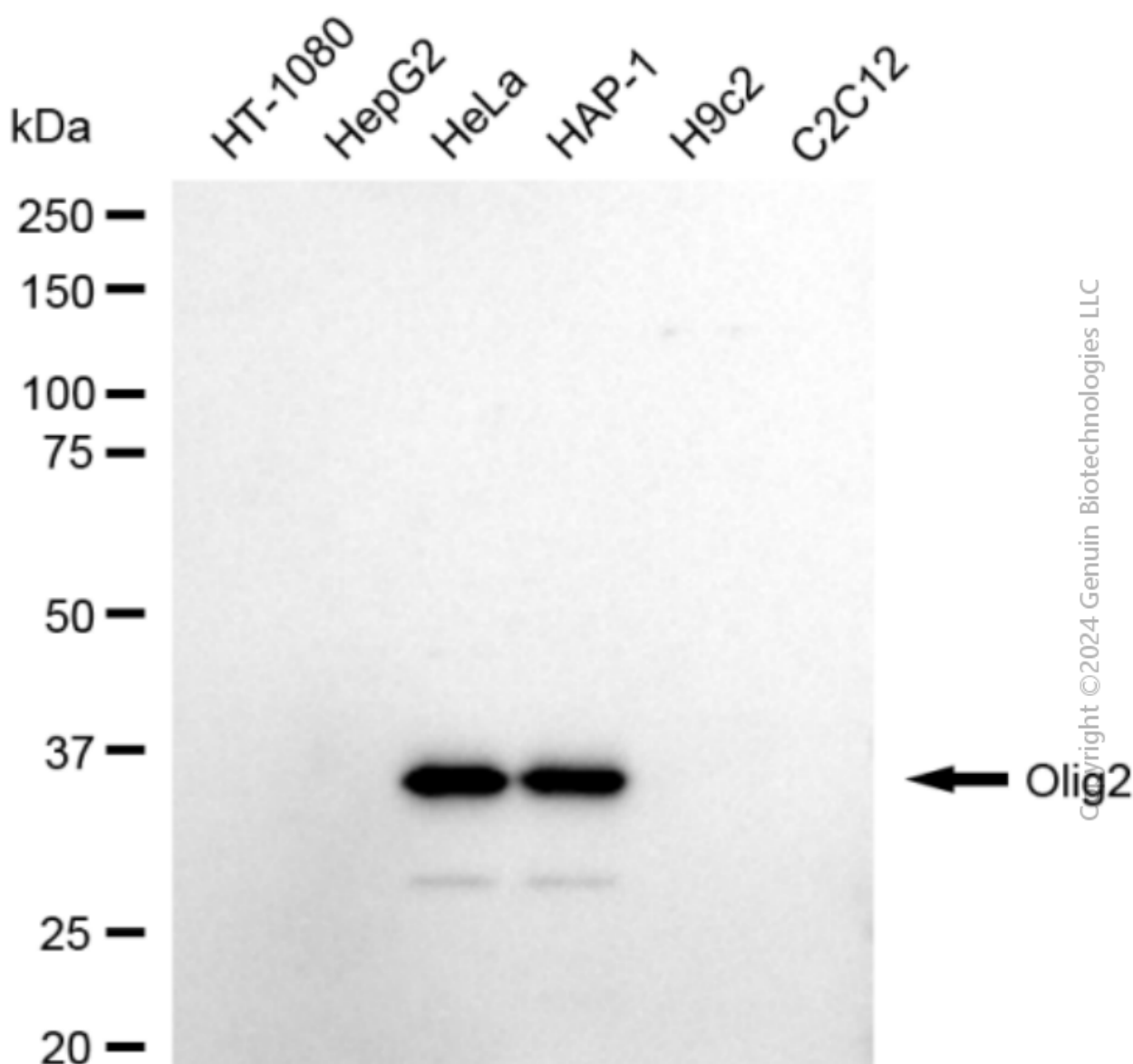
### SUPPORT

SUPPORT@GENUINBIOTECH.COM  
TEL: +1-540-855-7041

### ORDERS

SALES@GENUINBIOTECH.COM  
FAX: +1-540-855-7041

[WWW.GENUINBIOTECH.COM](http://WWW.GENUINBIOTECH.COM)



Western blotting analysis using anti-Olig2 antibody (Cat#2291). Total cell lysates (30 µg) from various cell lines were loaded and separated by SDS-PAGE. The blot was incubated with anti-Olig2 antibody (Cat#2291, 1:5,000) and HRP-conjugated goat anti-rabbit secondary antibody (Cat#201, 1:20,000) respectively. Image was developed using FeQ™ ECL Substrate Kit (Cat#226).