

# Anti-MAP2K1/MAP2K2 Recombinant Rabbit Monoclonal Antibody



**Catalog #: 2293**

## Aliases

Mitogen-Activated Protein Kinase Kinase 1; MEK1; Dual Specificity Mitogen-Activated Protein Kinase Kinase 1; MAPK/ERK Kinase 1; MAPKK1; PRKMK1; MKK1; ERK Activator Kinase 1; MAP Kinase Kinase 1; EC 2.7.12.2; MAPKK 1; MEK 1; Protein Kinase, Mitogen-Activated, Kinase 1 (MAP Kinase Kinase 1); CFC3; MEL; Mitogen-Activated Protein Kinase Kinase 2; MEK2; MAP Kinase Kinase 2; PRKMK2; MKK2; Dual Specificity Mitogen-Activated Protein Kinase Kinase 2; ERK Activator Kinase 2; MAPK/ERK Kinase 2; EC 2.7.12.2; Mitogen-Activated Protein Kinase Kinase 2, P45; MAPKK 2; MAPKK2; MEK 2; CFC4

## Background

Gene Name: MAP2K1/MAP2K2

NCBI Gene Entry: [5604/5605](#)

UniProt Entry: [Q02750/P36507](#)

## Application Information

Molecular Weight: Predicted, 43/44 kDa; observed, 45 kDa

Clonality: Rabbit monoclonal antibody

Clone ID: 24GB175

Species Reactivity: Human, mouse, rat

Applications Tested: Western blotting (WB), flow cytometry (FCM), immunocytochemistry (IC)

## Immunogen

A synthesized peptide derived from human MEK1/2

## Isotype

Rabbit IgG

## Storage Buffer

Supplied in PBS (pH 7.4) containing 50% glycerol, and 0.02% sodium azide.

## Storage

Store at -20 °C for one year.

## Recommended Dilutions

Western Blotting (WB): 1:2,000-1:10,000

Flow Cytometry (FCM): 1:2,000

---

### SUPPORT

SUPPORT@GENUINBIOTECH.COM  
TEL: +1-540-855-7041

### ORDERS

SALES@GENUINBIOTECH.COM  
FAX: +1-540-855-7041

[WWW.GENUINBIOTECH.COM](http://WWW.GENUINBIOTECH.COM)

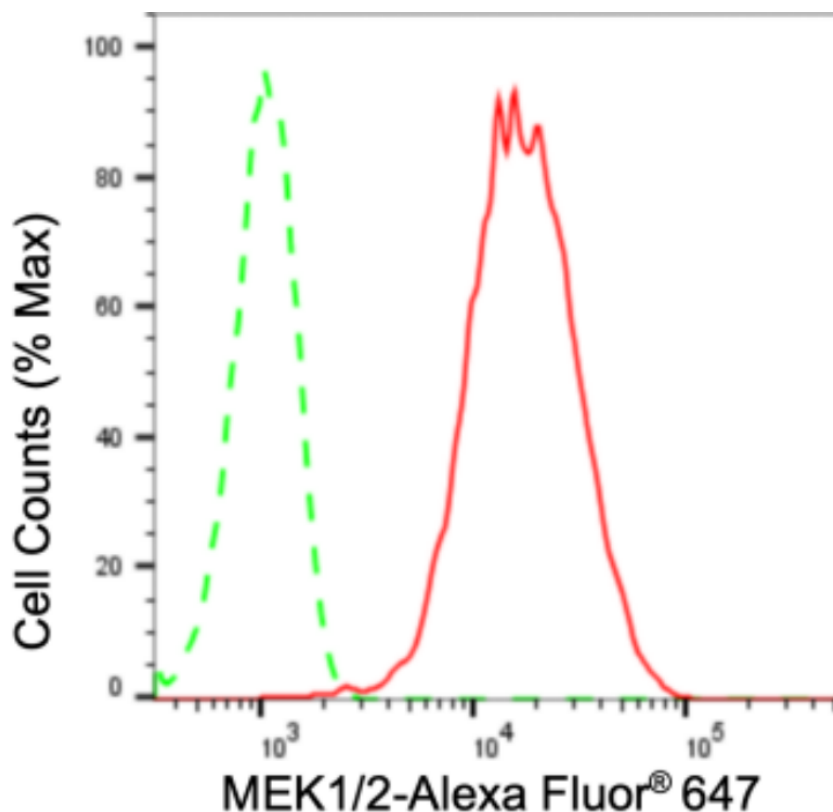
# Anti-MAP2K1/MAP2K2 Recombinant Rabbit Monoclonal Antibody

PAGE 2

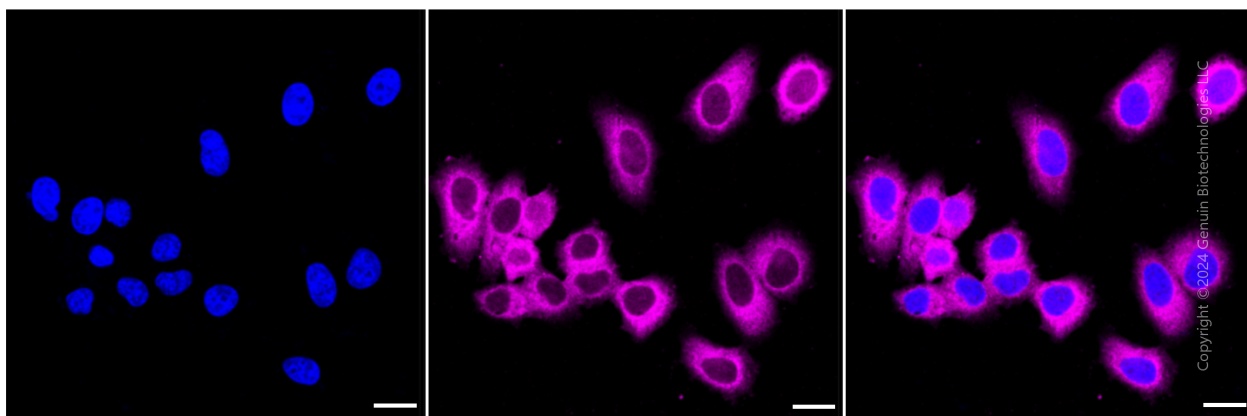
Immunocytochemistry (IC): 1:100-1:1,000

**Note:** This product is for research use only.

## Validation Data



Copyright ©2024 Genuin Biotechnologies LLC



Copyright ©2024 Genuin Biotechnologies LLC

### SUPPORT

SUPPORT@GENUINBIOTECH.COM  
TEL: +1-540-855-7041

### ORDERS

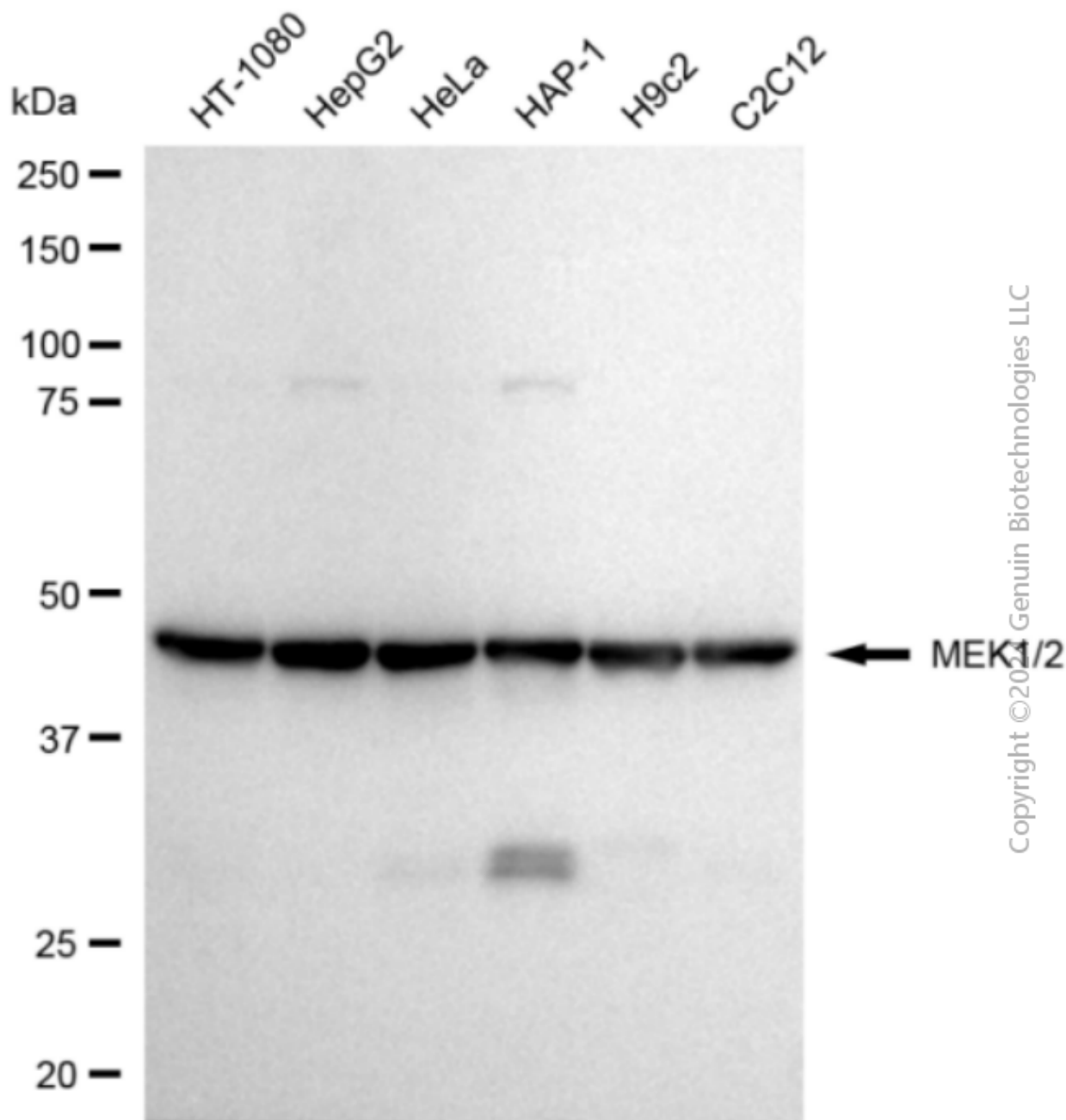
SALES@GENUINBIOTECH.COM  
FAX: +1-540-855-7041

WWW.GENUINBIOTECH.COM

## Anti-MAP2K1/MAP2K2 Recombinant Rabbit Monoclonal Antibody

PAGE 3

gain: High. Scale bar: 20  $\mu$ m.



Western blotting analysis using anti-MEK1/2 antibody (Cat#2293). Total cell lysates (30  $\mu$ g) from various cell lines were loaded and separated by SDS-PAGE. The blot was incubated with anti-MEK1/2 antibody (Cat#2293, 1:10,000) and HRP-conjugated goat anti-rabbit secondary antibody (Cat#201, 1:20,000) respectively. Image was developed using FeQ<sup>TM</sup> ECL Substrate Kit (Cat#226).

### SUPPORT

SUPPORT@GENUINBIOTECH.COM  
TEL: +1-540-855-7041

### ORDERS

SALES@GENUINBIOTECH.COM  
FAX: +1-540-855-7041

[WWW.GENUINBIOTECH.COM](http://WWW.GENUINBIOTECH.COM)