

# Anti-Matrix Metallopeptidase 12 Recombinant Rabbit Monoclonal Antibody



**Catalog #: 2299**

## Aliases

Matrix Metallopeptidase 12; HME; Matrix Metalloproteinase 12 (Macrophage Elastase); Macrophage Metalloelastase; Macrophage Elastase; EC 3.4.24.65; MMP-12; MME; ME; Matrix Metallopeptidase 12 (Macrophage Elastase); Matrix Metalloproteinase-12; EC 3.4.24

## Background

Gene Name: MMP12

NCBI Gene Entry: [4321](#)

UniProt Entry: [P39900](#)

## Application Information

Molecular Weight: Predicted, 54 kDa; observed, 45 kDa

Clonality: Rabbit monoclonal antibody

Clone ID: 24GB205

Species Reactivity: Human, mouse, rat

Applications Tested: Western blotting (WB), flow cytometry (FCM), immunocytochemistry (IC)

## Immunogen

A synthesized peptide derived from human MMP12

## Isotype

Rabbit IgG

## Storage Buffer

Supplied in PBS (pH 7.4) containing 50% glycerol, and 0.02% sodium azide.

## Storage

Store at -20 °C for one year.

## Recommended Dilutions

Western Blotting (WB): 1:1,000-1:5,000

Flow Cytometry (FCM): 1:2,000

Immunocytochemistry (IC): 1:100-1:1,000

**Note:** This product is for research use only.

---

### SUPPORT

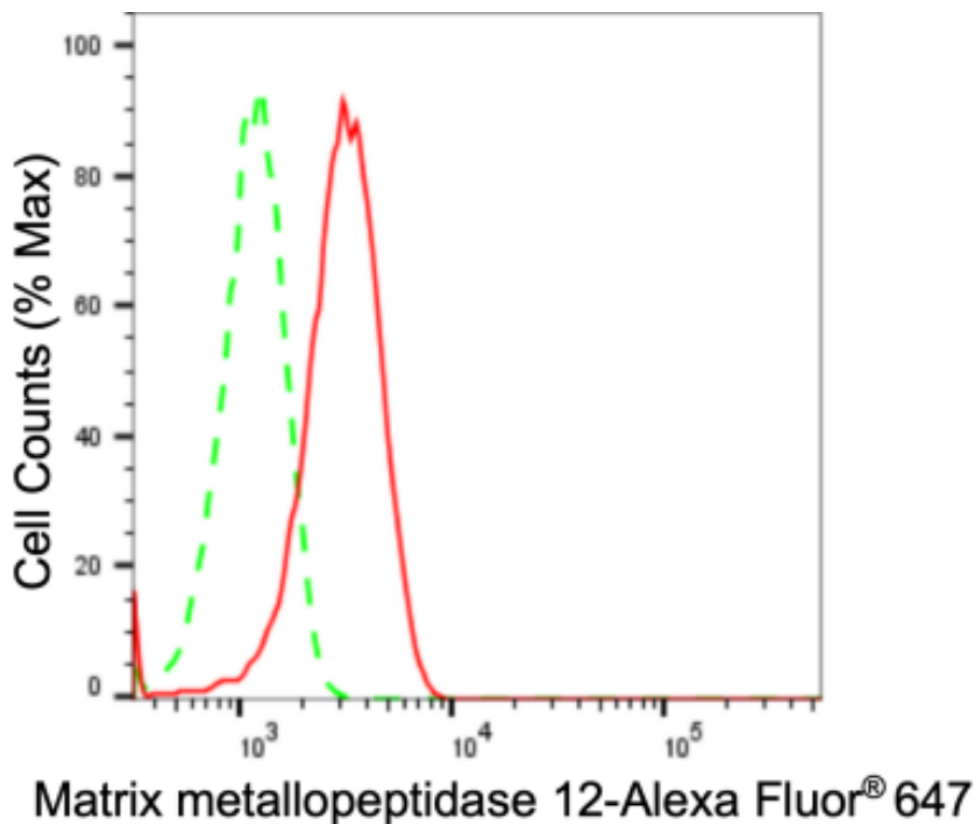
SUPPORT@GENUINBIOTECH.COM  
TEL: +1-540-855-7041

### ORDERS

SALES@GENUINBIOTECH.COM  
FAX: +1-540-855-7041

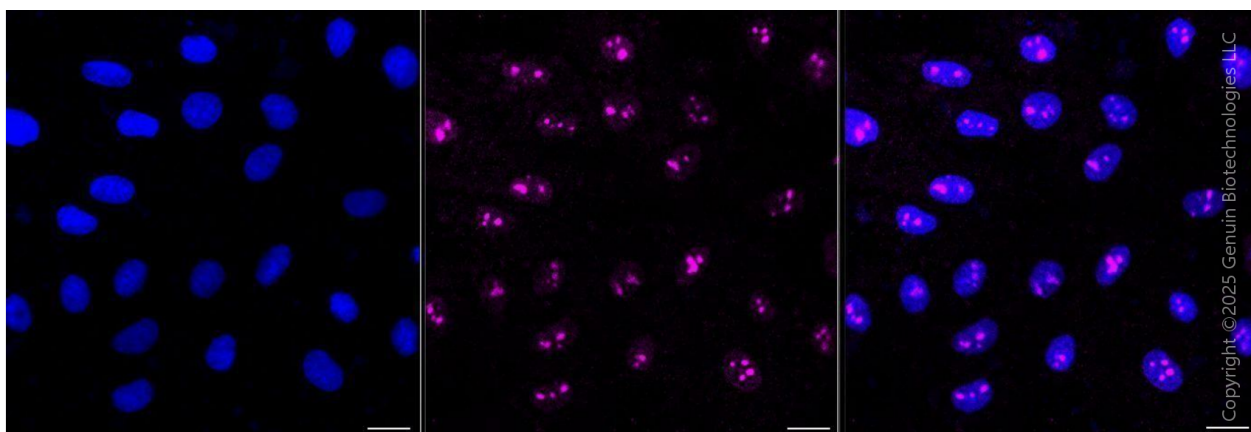
[WWW.GENUINBIOTECH.COM](http://WWW.GENUINBIOTECH.COM)

## Validation Data



Copyright ©2024 Genuin Biotechnologies LLC

Flow cytometric analysis of Matrix metallopeptidase 12 expression in HepG2 cells using anti-Matrix metallopeptidase 12 antibody (Cat#2299, 1:2,000). Green, isotype control; red, Matrix metallopeptidase 12.



Immunocytochemical staining of H9c2 cells with anti-Matrix metallopeptidase 12 antibody (Cat#2299, 1:1,000). Nuclei were stained blue with DAPI; Matrix metallopeptidase 12 was stained magenta with Alexa Fluor® 647. Images were taken using Leica stellaris 5. Protein abundance based on laser Intensity and smart gain: Medium. Scale bar, 20 µm.

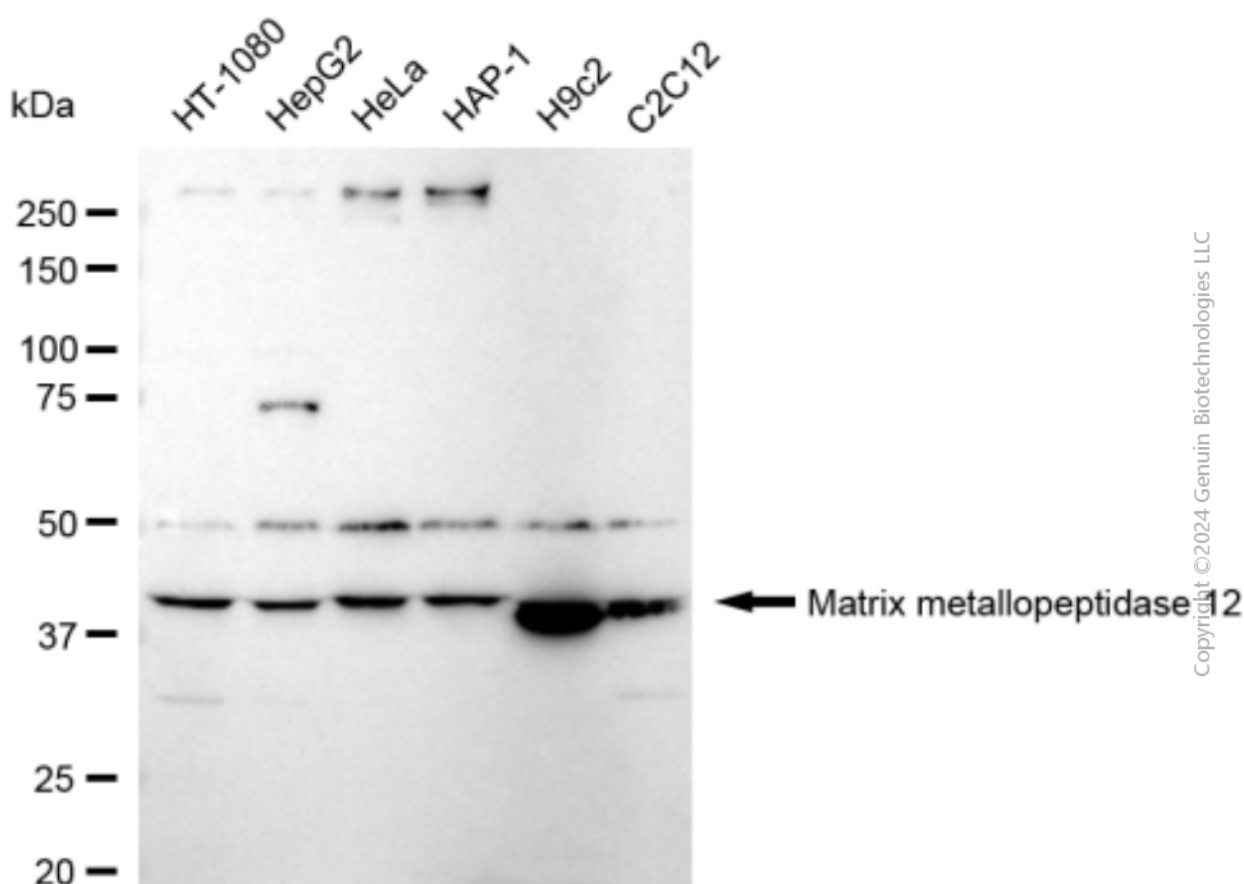
### SUPPORT

SUPPORT@GENUINBIOTECH.COM  
TEL: +1-540-855-7041

### ORDERS

SALES@GENUINBIOTECH.COM  
FAX: +1-540-855-7041

WWW.GENUINBIOTECH.COM



Western blotting analysis using anti-Matrix metallopeptidase 12 antibody (Cat#2299). Total cell lysates (30 µg) from various cell lines were loaded and separated by SDS-PAGE. The blot was incubated with anti-Matrix metallopeptidase 12 antibody (Cat#2299, 1:5,000) and HRP-conjugated goat anti-rabbit secondary antibody (Cat#201, 1:20,000) respectively. Image was developed using FeQ™ ECL Substrate Kit (Cat#226).