

Anti-NFKB Inhibitor Beta Recombinant Rabbit Monoclonal Antibody



Catalog #: 2306

Aliases

NFKB Inhibitor Beta; TRIP9; IKBB; NF-Kappa-B Inhibitor Beta; Nuclear Factor Of Kappa Light Polypeptide Gene Enhancer In B-Cells Inhibitor, Beta; Thyroid Receptor-Interacting Protein 9; TR-Interacting Protein 9; I-Kappa-B-Beta; NF-Kappa-BIB; IkappaBbeta; Ikb-Beta; TRIP-9; Ikb-B

Background

Gene Name: NFKBIB

NCBI Gene Entry: [4793](#)

UniProt Entry: [Q15653](#)

Application Information

Molecular Weight: Predicted, 38 kDa; observed, 48 kDa

Clonality: Rabbit monoclonal antibody

Clone ID: 24GB235

Species Reactivity: Human

Applications Tested: Western blotting (WB), flow cytometry (FCM), immunocytochemistry (IC)

Immunogen

A synthesized peptide derived from human IKB beta

Isotype

Rabbit IgG

Storage Buffer

Supplied in PBS (pH 7.4) containing 50% glycerol, and 0.02% sodium azide.

Storage

Store at -20 °C for one year.

Recommended Dilutions

Western Blotting (WB): 1:1,000-1:5,000

Flow Cytometry (FCM): 1:2,000

Immunocytochemistry (IC): 1:100-1:1,000

SUPPORT

SUPPORT@GENUINBIOTECH.COM
TEL: +1-540-855-7041

ORDERS

SALES@GENUINBIOTECH.COM
FAX: +1-540-855-7041

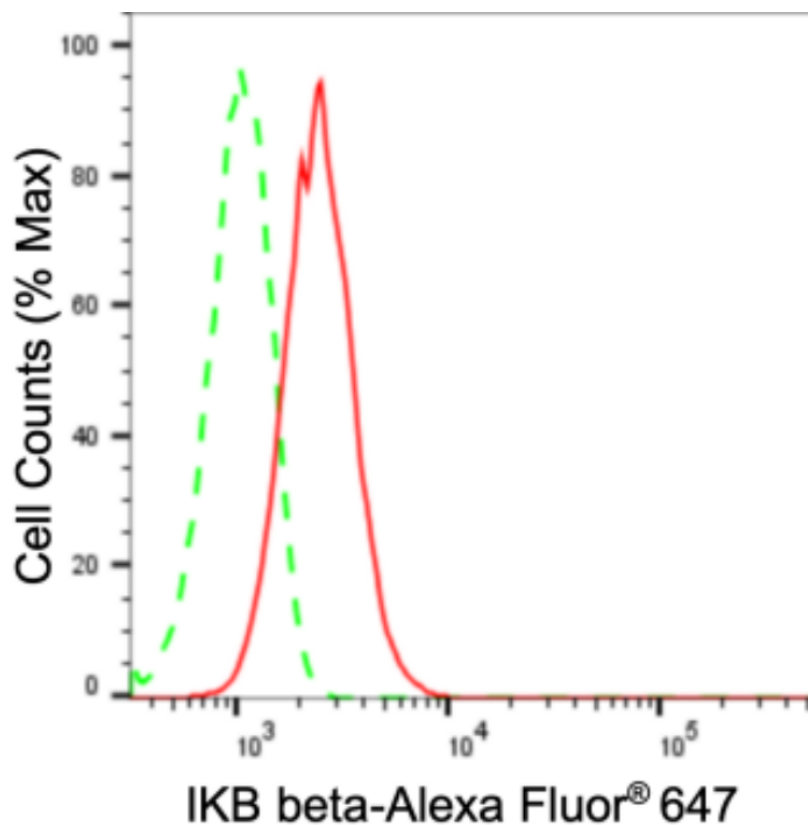
WWW.GENUINBIOTECH.COM

Anti-NFKB Inhibitor Beta Recombinant Rabbit Monoclonal Antibody

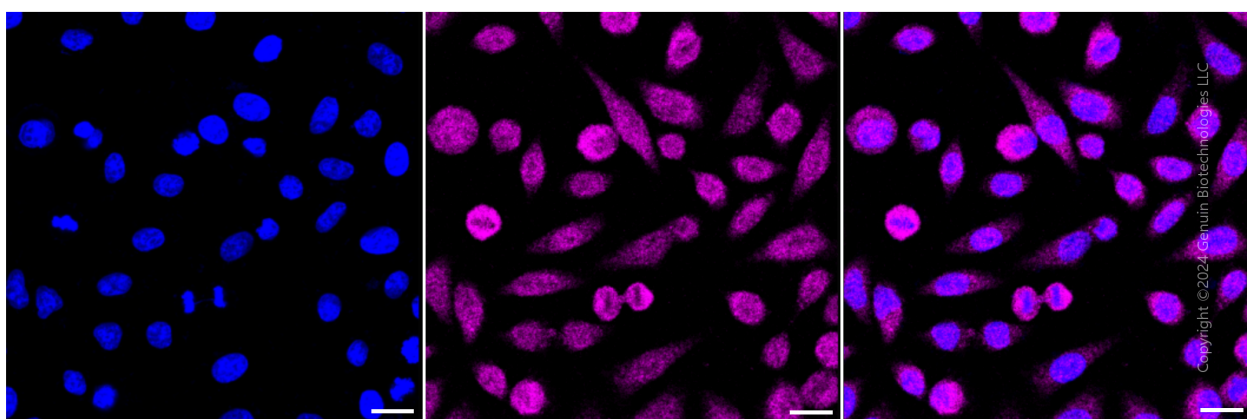
PAGE 2

Note: This product is for research use only.

Validation Data



Flow cytometric analysis of IKB beta expression in HepG2 cells using IKB beta antibody (Cat#2306, 1:2,000). Green, isotype control; red, IKB beta.



Immunocytochemical staining of HepG2 cells with anti-IKB beta antibody (Cat#2306, 1:1,000). Nuclei were stained blue with DAPI; IKB beta was stained magenta with Alexa Fluor® 647. Images were taken using Leica stellaris 5. Protein abundance based on laser Intensity and smart gain: Medium. Scale bar: 20 μ m.

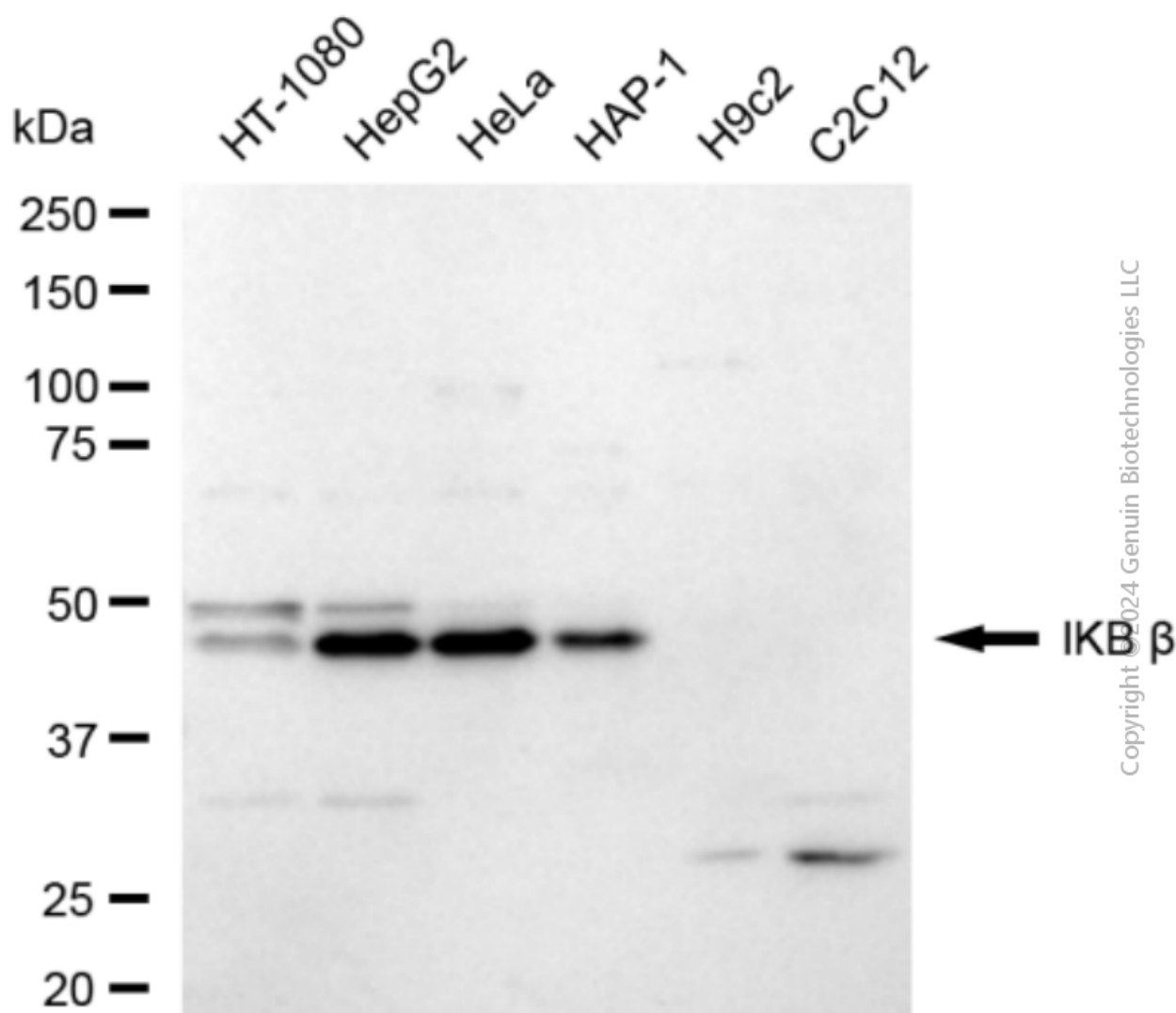
SUPPORT

SUPPORT@GENUINBIOTECH.COM
TEL: +1-540-855-7041

ORDERS

SALES@GENUINBIOTECH.COM
FAX: +1-540-855-7041

WWW.GENUINBIOTECH.COM



Western blotting analysis using anti-IκB beta antibody (Cat#2306). Total cell lysates (30 μg) from various cell lines were loaded and separated by SDS-PAGE. The blot was incubated with anti-IκB beta antibody (Cat#2306, 1:5,000) and HRP-conjugated goat anti-rabbit secondary antibody (Cat#201, 1:20,000) respectively. Image was developed using FeQ™ ECL Substrate Kit (Cat#226).