

Anti-Opioid Receptor Delta 1 Recombinant Rabbit Monoclonal Antibody



Catalog #: 2317

Aliases

Opioid Receptor Delta 1; Delta-Type Opioid Receptor; D-OR-1; DOR-1; OPRD; Opioid Receptor, Delta 1; Delta Opioid Receptor 1; DOR1; DOP; DOR

Background

Gene Name: OPRD1

NCBI Gene Entry: [4985](#)

UniProt Entry: [P41143](#)

Application Information

Molecular Weight: Predicted, 40 kDa; observed, 40 kDa

Clonality: Rabbit monoclonal antibody

Clone ID: 24GB280

Species Reactivity: Human, mouse, rat

Applications Tested: Western blotting (WB), flow cytometry (FCM), immunocytochemistry (IC)

Immunogen

A synthesized peptide derived from human OPRD1

Isotype

Rabbit IgG

Storage Buffer

Supplied in PBS (pH 7.4) containing 50% glycerol, and 0.02% sodium azide.

Storage

Store at -20 °C for one year.

Recommended Dilutions

Western Blotting (WB): 1:1,000-1:5,000

Flow Cytometry (FCM): 1:2,000

Immunocytochemistry (IC): 1:100-1:1,000

Note: This product is for research use only.

Validation Data

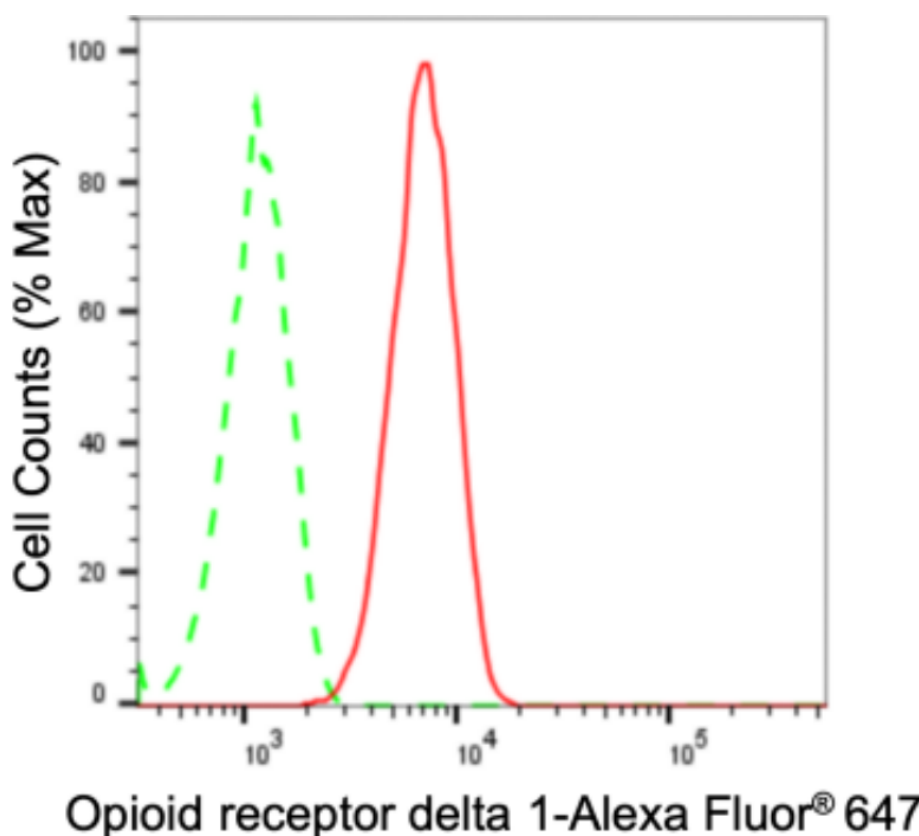
SUPPORT

SUPPORT@GENUINBIOTECH.COM
TEL: +1-540-855-7041

ORDERS

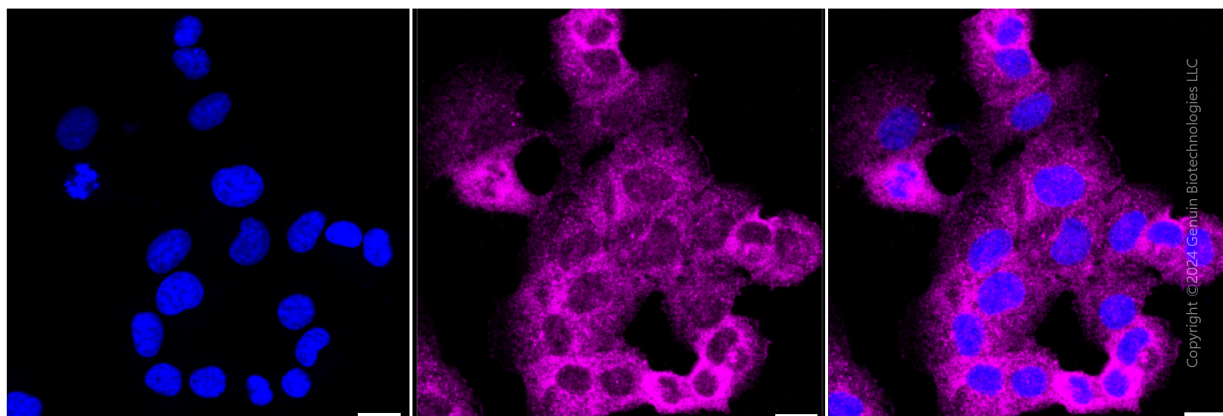
SALES@GENUINBIOTECH.COM
FAX: +1-540-855-7041

WWW.GENUINBIOTECH.COM



Copyright ©2024 Genuin Biotechnologies LLC

Flow cytometric analysis of Opioid receptor delta 1 expression in HT-1080 cells using anti-Opioid receptor delta 1 antibody (Cat#2317, 1:2,000). Green, isotype control; red, Opioid receptor delta 1.



Immunocytochemical staining of HT-1080 cells with anti-Opioid receptor delta 1 antibody (Cat#2317, 1:1,000). Nuclei were stained blue with DAPI; Opioid receptor delta 1 was stained magenta with Alexa Fluor® 647. Images were taken using Leica stellaris 5. Protein abundance based on laser Intensity and smart gain: Medium. Scale bar: 20 µm.

SUPPORT

SUPPORT@GENUINBIOTECH.COM
TEL: +1-540-855-7041

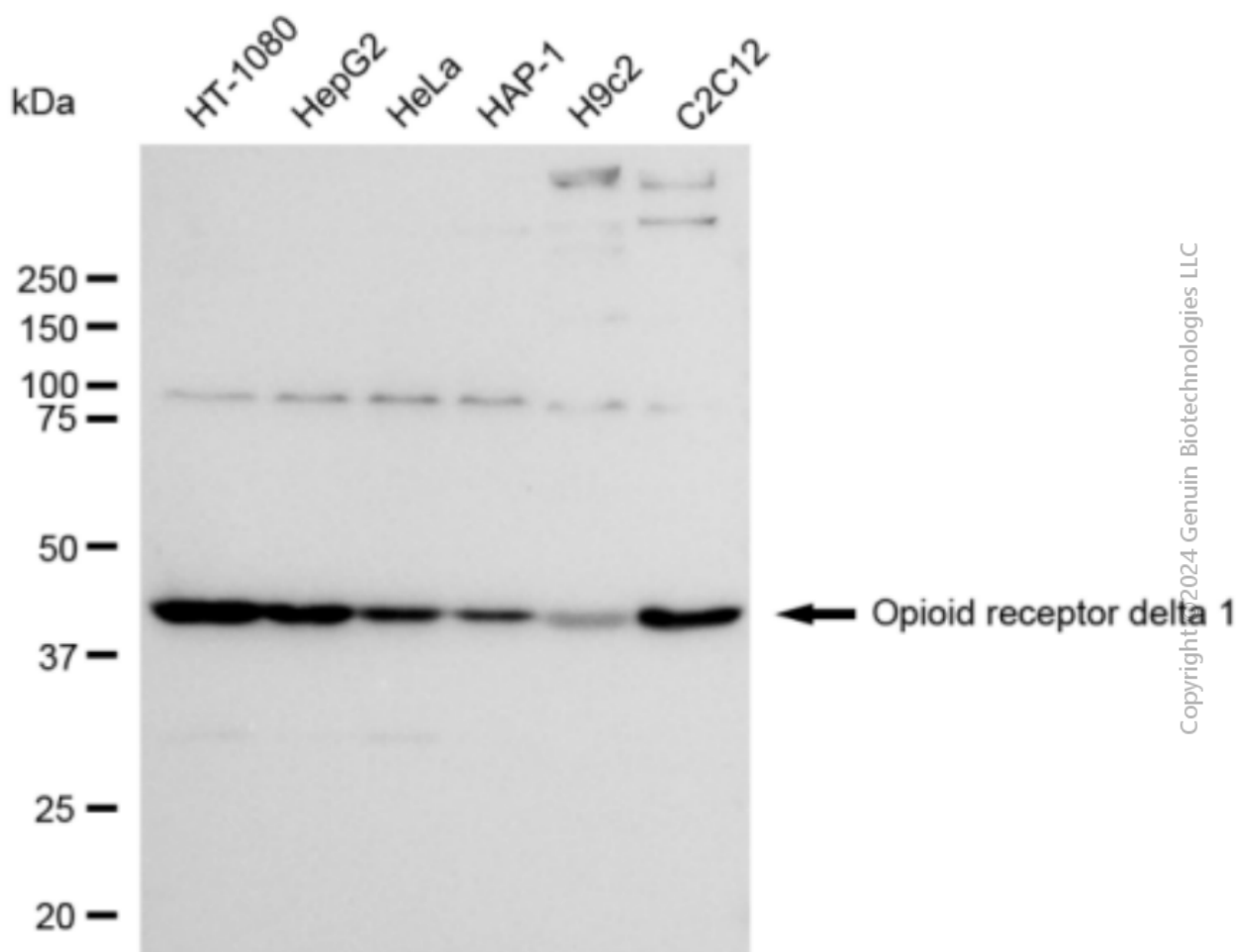
ORDERS

SALES@GENUINBIOTECH.COM
FAX: +1-540-855-7041

WWW.GENUINBIOTECH.COM

Anti-Opioid Receptor Delta 1 Recombinant Rabbit Monoclonal Antibody

PAGE 3



Western blotting analysis using anti-Opioid receptor delta 1 antibody (Cat#2317). Total cell lysates (30 μ g) from various cell lines were loaded and separated by SDS-PAGE. The blot was incubated with anti-Opioid receptor delta 1 antibody (Cat#2317, 1:5,000) and HRP-conjugated goat anti-rabbit secondary antibody (Cat#201, 1:20,000) respectively. Image was developed using FeQTM ECL Substrate Kit (Cat#226).

SUPPORT

SUPPORT@GENUINBIOTECH.COM
TEL: +1-540-855-7041

ORDERS

SALES@GENUINBIOTECH.COM
FAX: +1-540-855-7041

WWW.GENUINBIOTECH.COM