

Anti-MAPK7 Recombinant Rabbit Monoclonal Antibody



Catalog #: 2319

Aliases

Mitogen-Activated Protein Kinase 7; BMK1; ERK5 ; PRKM7; Extracellular-Signal-Regulated Kinase 5; Big MAP Kinase 1; MAP Kinase 7; EC 2.7.11.24; BMK1 Kinase; MAPK 7; BMK-1; ERK-5; Extracellular Signal-Regulated Kinase 5; EC 2.7.11; ERK4

Background

Gene Name: MAPK7

NCBI Gene Entry: [5598](#)

UniProt Entry: [Q13164](#)

Application Information

Molecular Weight: Predicted, 88 kDa; observed, 115 kDa

Clonality: Rabbit monoclonal antibody

Clone ID: 24GB290

Species Reactivity: Human, mouse, rat

Applications Tested: Western blotting (WB), flow cytometry (FCM), immunocytochemistry (IC)

Immunogen

A synthesized peptide derived from human ERK5

Isotype

Rabbit IgG

Storage Buffer

Supplied in PBS (pH 7.4) containing 50% glycerol, and 0.02% sodium azide.

Storage

Store at -20 °C for one year.

Recommended Dilutions

Western Blotting (WB): 1:1,000-1:5,000

Flow Cytometry (FCM): 1:2,000

Immunocytochemistry (IC): 1:100-1:1,000

Note: This product is for research use only.

SUPPORT

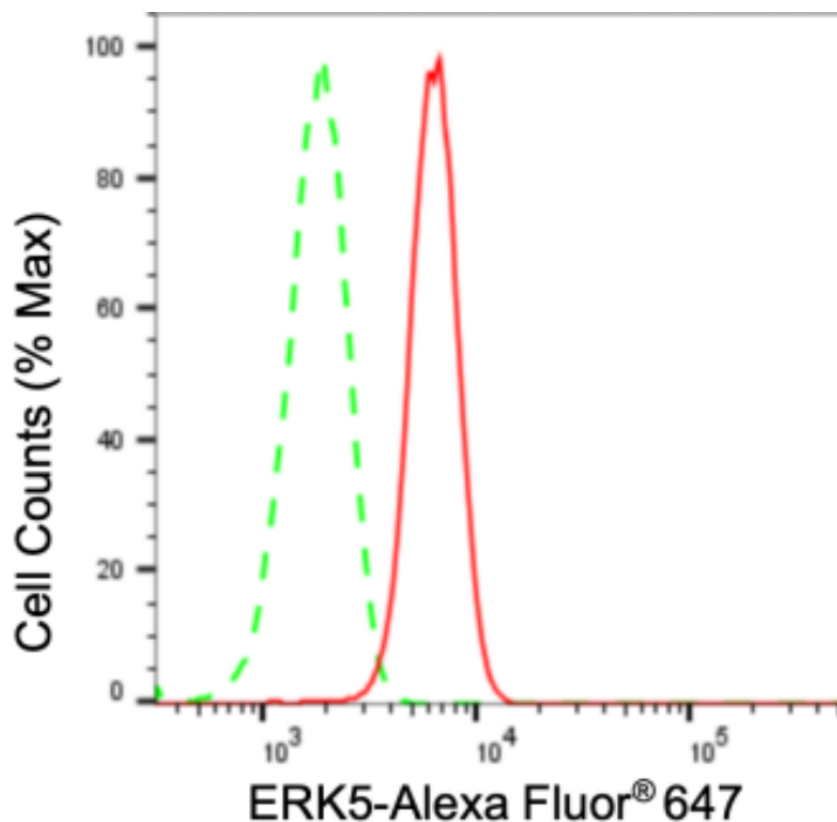
SUPPORT@GENUINBIOTECH.COM
TEL: +1-540-855-7041

ORDERS

SALES@GENUINBIOTECH.COM
FAX: +1-540-855-7041

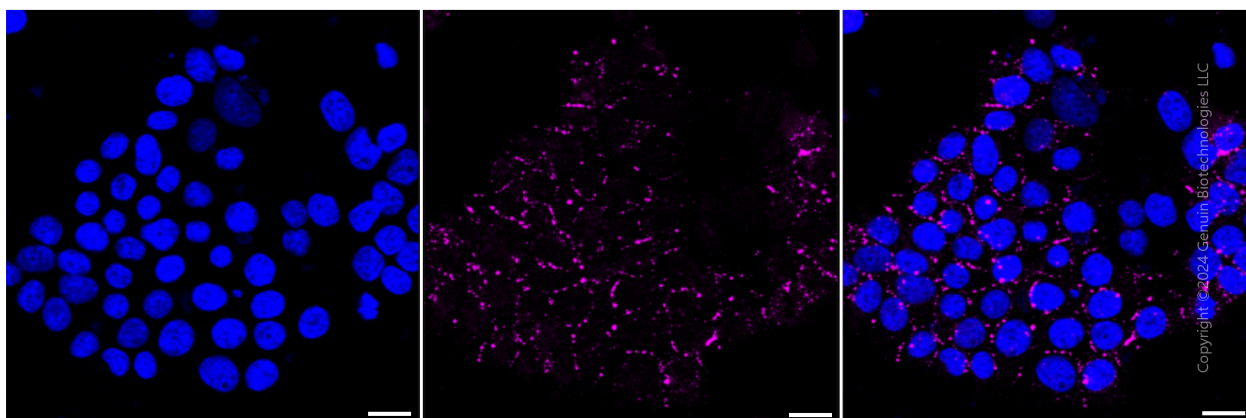
WWW.GENUINBIOTECH.COM

Validation Data



Copyright © 2024 Genuin Biotechnologies LLC

Flow cytometric analysis of ERK5 expression in HeLa cells using ERK5 antibody (Cat#2319, 1:2,000). Green, isotype control; red, ERK5.



Copyright © 2024 Genuin Biotechnologies LLC

Immunocytochemical staining of HeLa cells with anti-ERK5 antibody (Cat#2319, 1:1,000). Nuclei were stained blue with DAPI; ERK5 was stained magenta with Alexa Fluor® 647. Images were taken using Leica stellaris 5. Protein abundance based on laser Intensity and smart gain: High. Scale bar: 20 μ m.

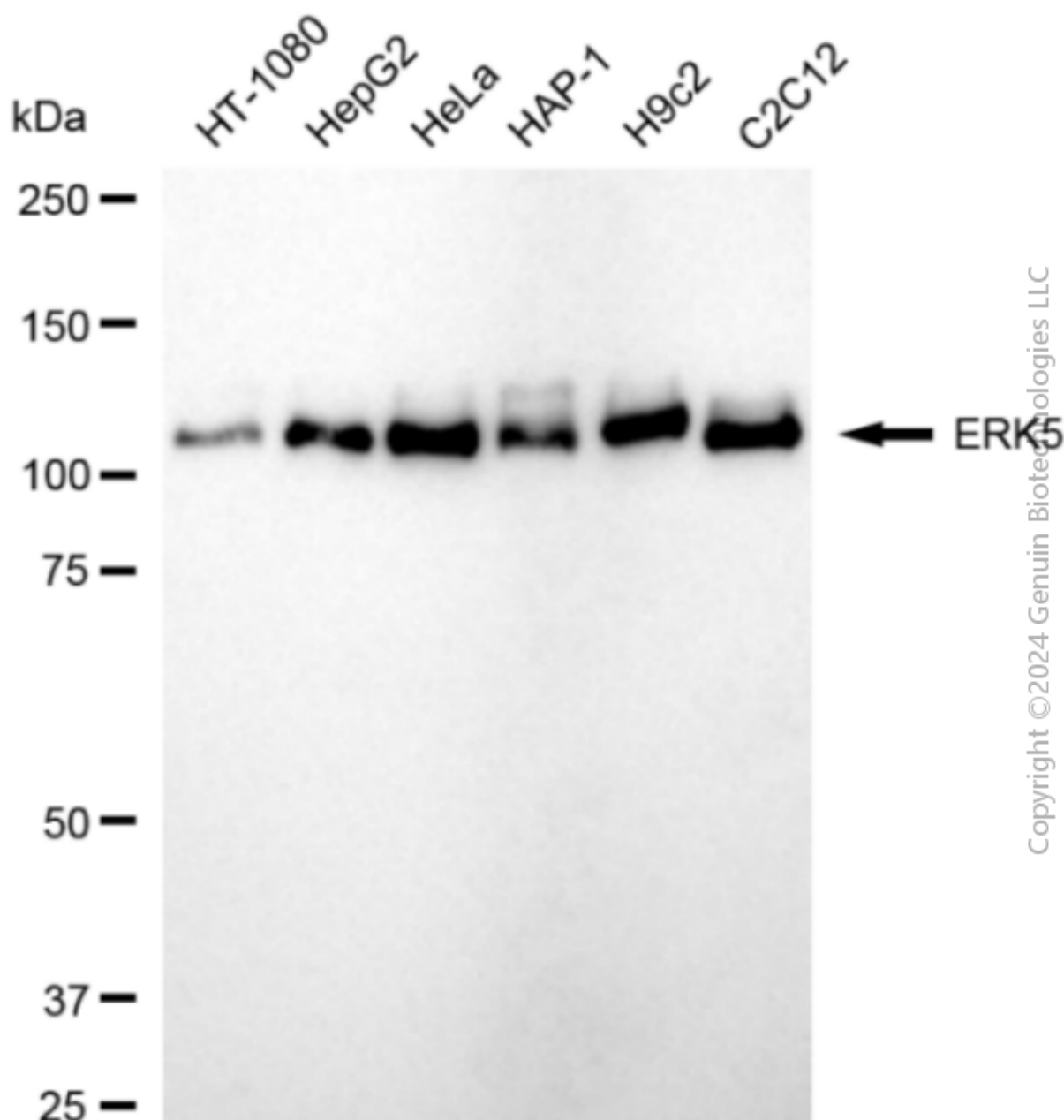
SUPPORT

SUPPORT@GENUINBIOTECH.COM
TEL: +1-540-855-7041

ORDERS

SALES@GENUINBIOTECH.COM
FAX: +1-540-855-7041

WWW.GENUINBIOTECH.COM



Copyright © 2024 Genuin Biotechologies LLC

Western blotting analysis using anti-ERK5 antibody (Cat#2319). Total cell lysates (30 µg) from various cell lines were loaded and separated by SDS-PAGE. The blot was incubated with anti-ERK5 antibody (Cat#2319, 1:5,000) and HRP-conjugated goat anti-rabbit secondary antibody (Cat#201, 1:20,000) respectively. Image was developed using FeQ™ ECL Substrate Kit (Cat#226).