

Anti-MAP2K5 Recombinant Rabbit Monoclonal Antibody



Catalog #: 2320

Aliases

Mitogen-Activated Protein Kinase Kinase 5; MEK5; Dual Specificity Mitogen-Activated Protein Kinase Kinase 5; MAP Kinase Kinase 5; MAPK/ERK Kinase 5; HsT17454; MAPKK5; PRKMK5; EC 2.7.12.2; MAPKK 5; MEK 5; MAP Kinase Kinase MEK5b; MKK5

Background

Gene Name: MAP2K5

NCBI Gene Entry: [5607](#)

UniProt Entry: [Q13163](#)

Application Information

Molecular Weight: Predicted, 50 kDa; observed, 49 kDa

Clonality: Rabbit monoclonal antibody

Clone ID: 24GB295

Species Reactivity: Human

Applications Tested: Western blotting (WB), flow cytometry (FCM), immunocytochemistry (IC)

Immunogen

A synthesized peptide derived from human MEK5

Isotype

Rabbit IgG

Storage Buffer

Supplied in PBS (pH 7.4) containing 50% glycerol, and 0.02% sodium azide.

Storage

Store at -20 °C for one year.

Recommended Dilutions

Western Blotting (WB): 1:1,000-1:5,000

Flow Cytometry (FCM): 1:2,000

Immunocytochemistry (IC): 1:100-1:1,000

Note: This product is for research use only.

SUPPORT

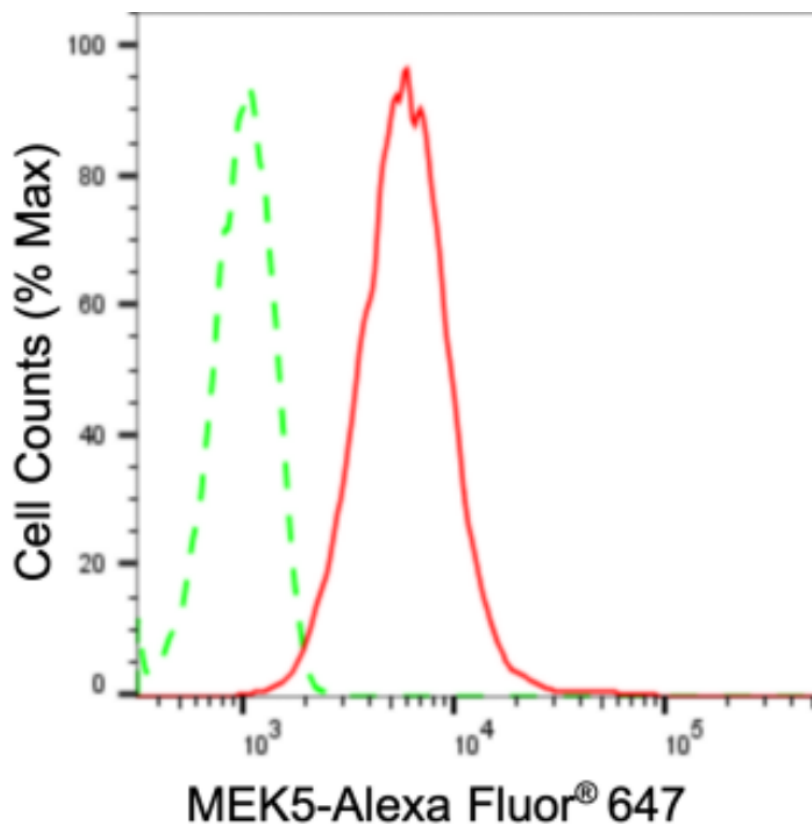
SUPPORT@GENUINBIOTECH.COM
TEL: +1-540-855-7041

ORDERS

SALES@GENUINBIOTECH.COM
FAX: +1-540-855-7041

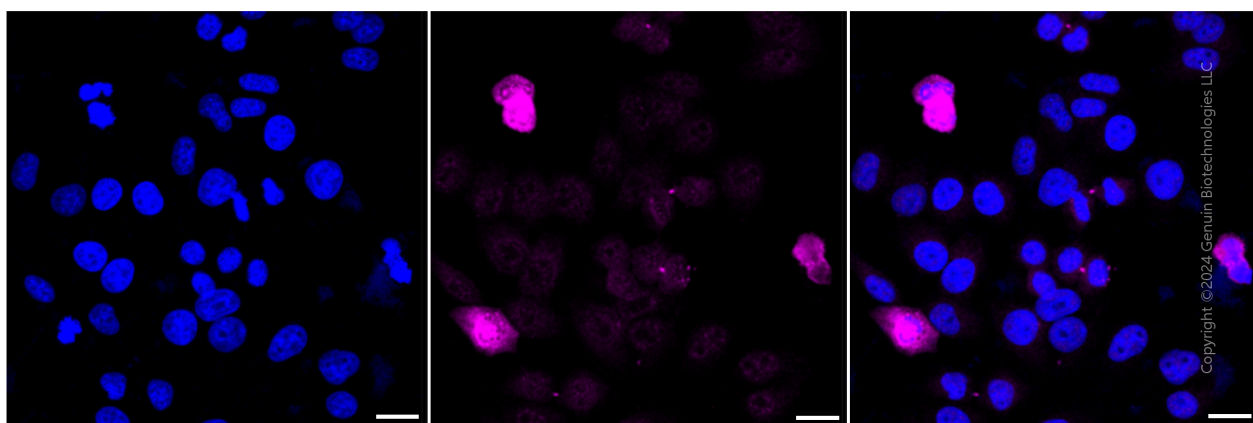
WWW.GENUINBIOTECH.COM

Validation Data



Copyright ©2024 Genuin Biotechnologies LLC

Flow cytometric analysis of MEK5 expression in HepG2 cells using MEK5 antibody (Cat#2320, 1:2,000). Green, isotype control; red, MEK5.



Copyright ©2024 Genuin Biotechnologies LLC

Immunocytochemical staining of HepG2 cells with anti-MEK5 antibody (Cat#2320, 1:1,000). Nuclei were stained blue with DAPI; MEK5 was stained magenta with Alexa Fluor® 647. Images were taken using Leica stellaris 5. Protein abundance based on laser Intensity and smart gain: High. Scale bar: 20 μm.

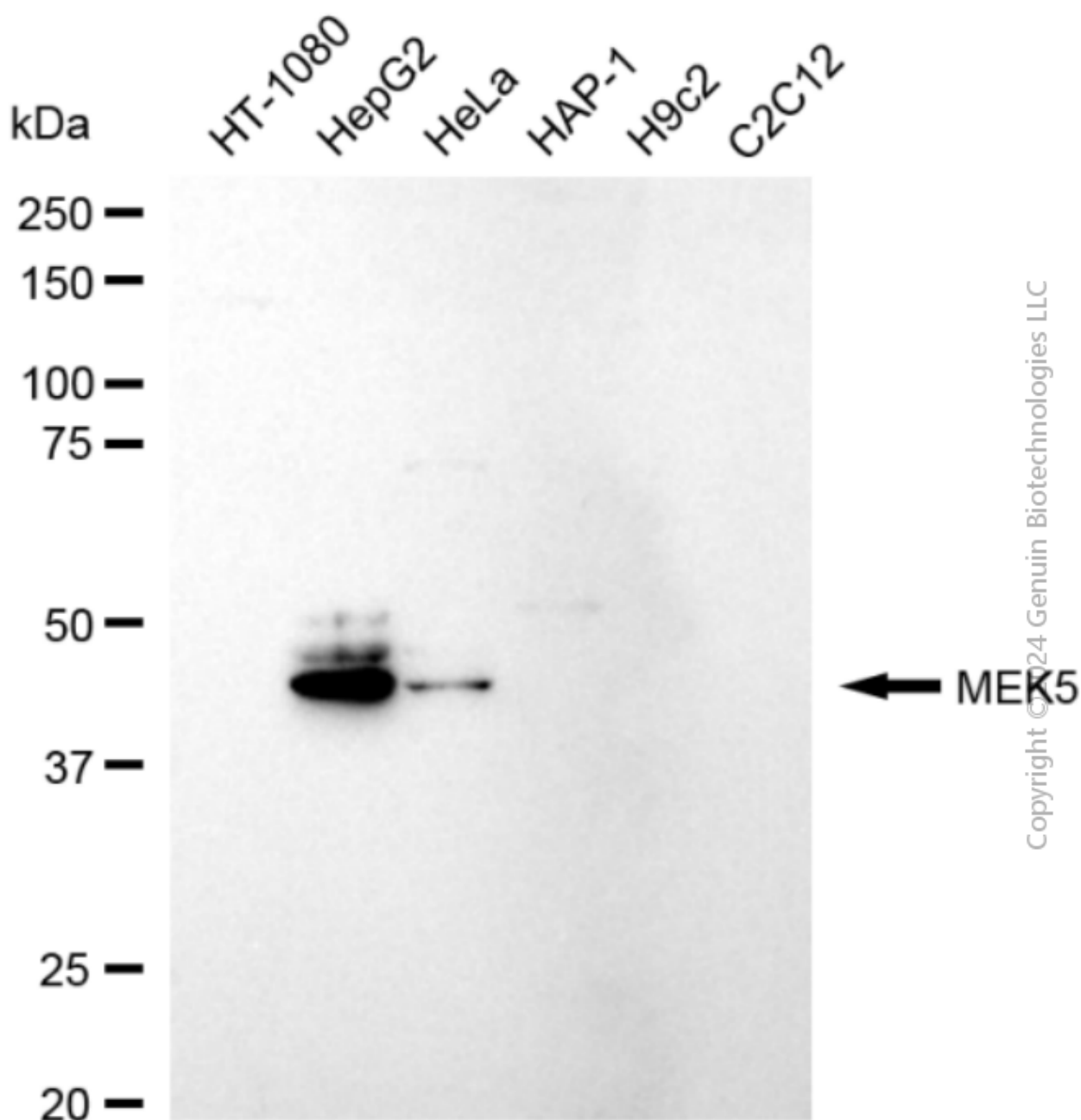
SUPPORT

SUPPORT@GENUINBIOTECH.COM
TEL: +1-540-855-7041

ORDERS

SALES@GENUINBIOTECH.COM
FAX: +1-540-855-7041

WWW.GENUINBIOTECH.COM



Western blotting analysis using anti-MEK5 antibody (Cat#2320). Total cell lysates (30 µg) from various cell lines were loaded and separated by SDS-PAGE. The blot was incubated with anti-MEK5 antibody (Cat#2320, 1:5,000) and HRP-conjugated goat anti-rabbit secondary antibody (Cat#201, 1:20,000) respectively. Image was developed using FeQ™ ECL Substrate Kit (Cat#226).