

Anti-MAP2K7 Recombinant Rabbit Monoclonal Antibody



Catalog #: 2323

Aliases

Mitogen-Activated Protein Kinase Kinase 7; MKK7; Dual Specificity Mitogen-Activated Protein Kinase Kinase 7; Stress-Activated Protein Kinase Kinase 4; SAPKK4; PRKMK7; Jnk2; C-Jun N-Terminal Kinase Kinase 2; JNK-Activating Kinase 2; MAP Kinase Kinase 7; MAPK/ERK Kinase 7; SAPK Kinase 4; EC 2.7.12.2; SAPKK-4; MEK 7; JNK Kinase 2; MAPKK 7; MAPKK7; JNKK 2; JNKK2; MEK7; SKK4; MEK

Background

Gene Name: MAP2K7

NCBI Gene Entry: [5609](#)

UniProt Entry: [O14733](#)

Application Information

Molecular Weight: Predicted, 47 kDa; observed, 47 kDa

Clonality: Rabbit monoclonal antibody

Clone ID: 24GB300

Species Reactivity: Human, mouse, rat

Applications Tested: Western blotting (WB), flow cytometry (FCM), immunocytochemistry (IC)

Immunogen

A synthesized peptide derived from human MEK7

Isotype

Rabbit IgG

Storage Buffer

Supplied in PBS (pH 7.4) containing 50% glycerol, and 0.02% sodium azide.

Storage

Store at -20 °C for one year.

Recommended Dilutions

Western Blotting (WB): 1:1,000-1:5,000

Flow Cytometry (FCM): 1:2,000

Immunocytochemistry (IC): 1:100-1:1,000

SUPPORT

SUPPORT@GENUINBIOTECH.COM
TEL: +1-540-855-7041

ORDERS

SALES@GENUINBIOTECH.COM
FAX: +1-540-855-7041

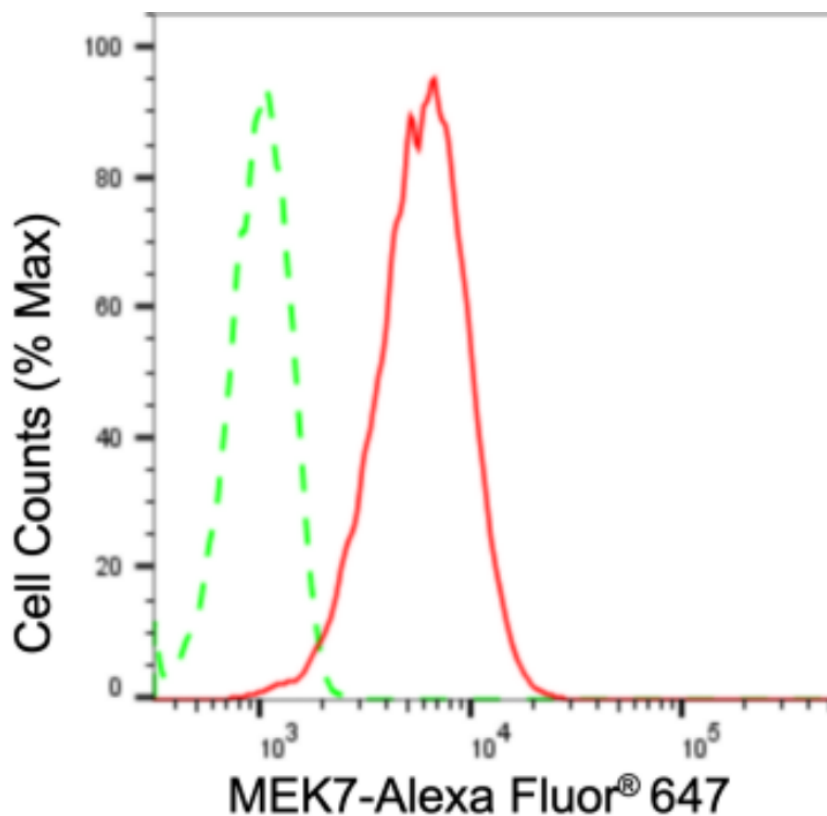
WWW.GENUINBIOTECH.COM

Anti-MAP2K7 Recombinant Rabbit Monoclonal Antibody

PAGE 2

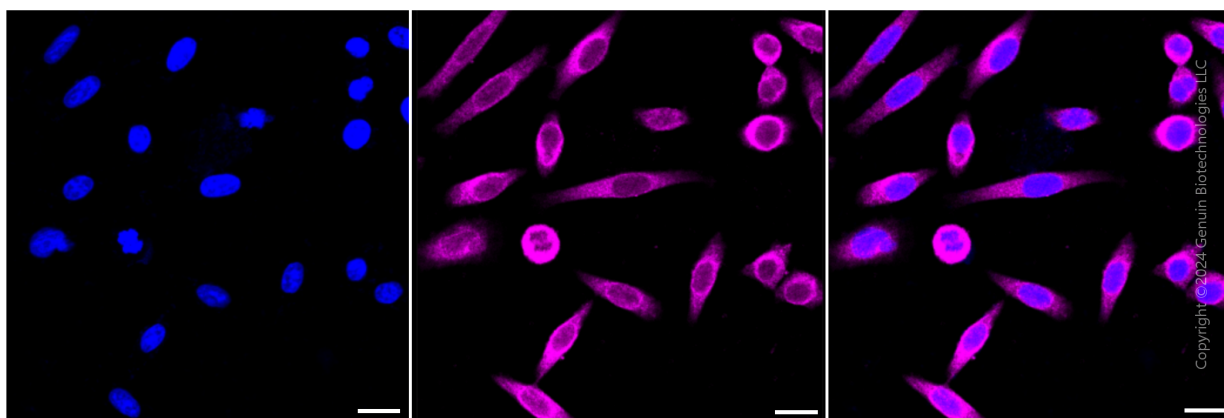
Note: This product is for research use only.

Validation Data



Copyright ©2024 Genuin Biotechnologies LLC

Flow cytometric analysis of MEK7 expression in HepG2 cells using MEK7 antibody (Cat#2323, 1:2,000). Green, isotype control; red, MEK7.



Copyright ©2024 Genuin Biotechnologies LLC

Immunocytochemical staining of HepG2 cells with anti-MEK7 antibody (Cat#2323, 1:1,000). Nuclei were stained blue with DAPI; MEK7 was stained magenta with Alexa Fluor® 647. Images were taken using Leica stellaris 5. Protein abundance based on laser Intensity and smart gain: Medium. Scale bar: 20 μm.

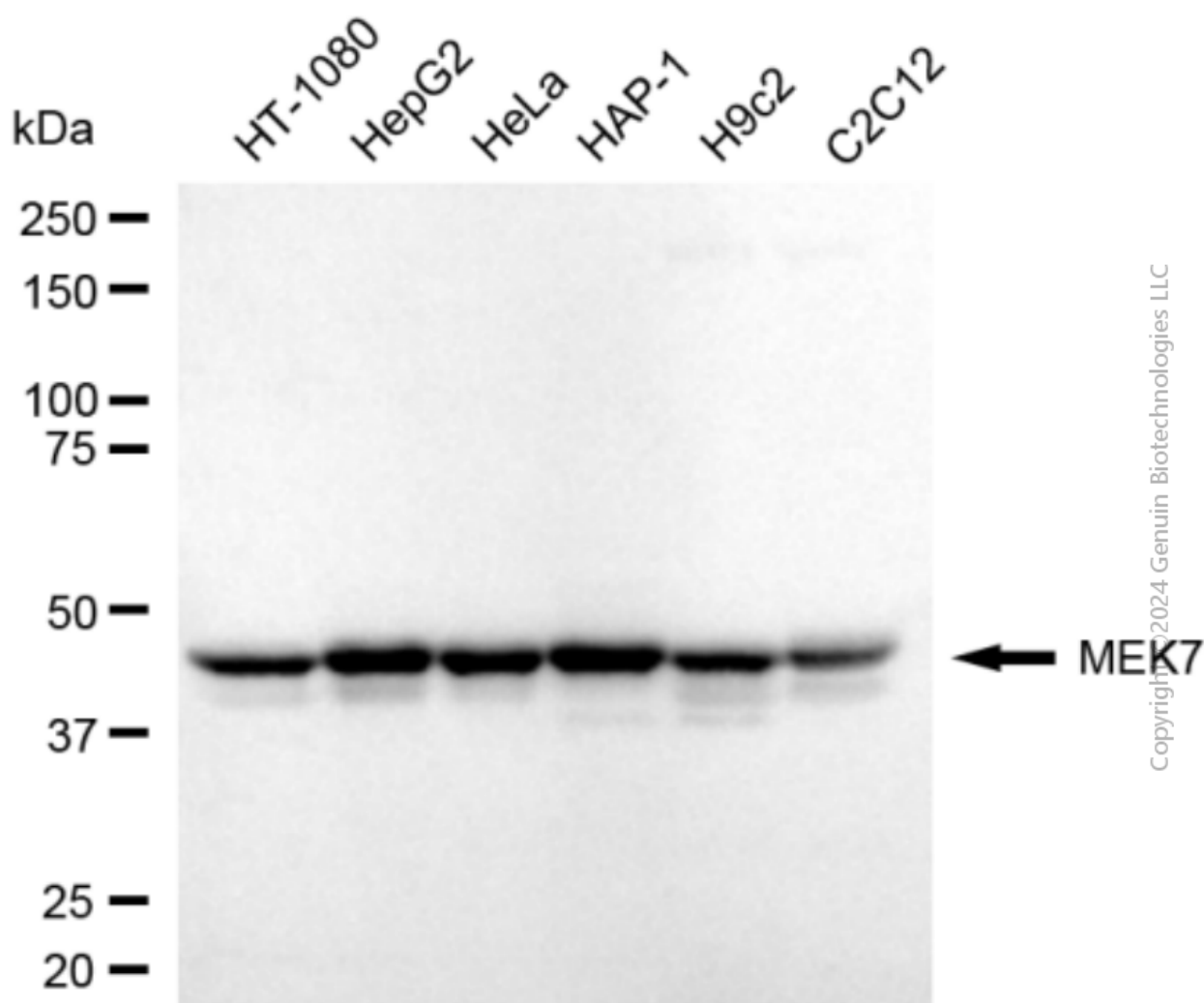
SUPPORT

SUPPORT@GENUINBIOTECH.COM
TEL: +1-540-855-7041

ORDERS

SALES@GENUINBIOTECH.COM
FAX: +1-540-855-7041

WWW.GENUINBIOTECH.COM



Western blotting analysis using anti-MEK7 antibody (Cat#2323). Total cell lysates (30 μ g) from various cell lines were loaded and separated by SDS-PAGE. The blot was incubated with anti-MEK7 antibody (Cat#2323, 1:5,000) and HRP-conjugated goat anti-rabbit secondary antibody (Cat#201, 1:20,000) respectively. Image was developed using FeQ™ ECL Substrate Kit (Cat#226).