

Anti-MAP2K3/ MAP2K6 Recombinant Rabbit Monoclonal Antibody



Catalog #: 2325

Aliases

Mitogen-Activated Protein Kinase Kinase 3; MAP Kinase Kinase 3; MAPK/ERK Kinase 3; MEK3; MKK3; Dual Specificity Mitogen-Activated Protein Kinase Kinase 3; Stress-Activated Protein Kinase Kinase 2; SAPK Kinase 2; EC 2.7.12.2; SAPKK-2; MAPKK 3; MAPKK3; PRKMK3; SAPKK2; MEK 3; Dual Specificity Mitogen Activated Protein Kinase Kinase 3; MAP2K3; SKK2; Mitogen-Activated Protein Kinase Kinase 6; SAPKK3; MEK6; MKK6; MAPKK6; PRKMK6; Protein Kinase, Mitogen-Activated, Kinase 6 (MAP Kinase Kinase 6); Dual Specificity Mitogen-Activated Protein Kinase Kinase 6; Stress-Activated Protein Kinase Kinase 3; MAPK/ERK Kinase 6; SAPK Kinase 3; EC 2.7.12.2; SAPKK-3; MAPKK 6; MEK 6; MAP Kinase Kinase 6; SKK3

Background

Gene Name: MAP2K3/ MAP2K6

NCBI Gene Entry: [5606/5608](#)

UniProt Entry: [P46734/P52564](#)

Application Information

Molecular Weight: Predicted, 39,37 kDa; observed, 37 kDa

Clonality: Rabbit monoclonal antibody

Clone ID: 24GB310

Species Reactivity: Human, mouse, rat

Applications Tested: Western blotting (WB), flow cytometry (FCM), immunocytochemistry (IC)

Immunogen

A synthesized peptide derived from human MEK3/MEK6

Isotype

Rabbit IgG

Storage Buffer

Supplied in PBS (pH 7.4) containing 50% glycerol, and 0.02% sodium azide.

Storage

Store at -20 °C for one year.

Recommended Dilutions

SUPPORT

SUPPORT@GENUINBIOTECH.COM
TEL: +1-540-855-7041

ORDERS

SALES@GENUINBIOTECH.COM
FAX: +1-540-855-7041

WWW.GENUINBIOTECH.COM

Anti-MAP2K3/ MAP2K6 Recombinant Rabbit Monoclonal Antibody

PAGE 2

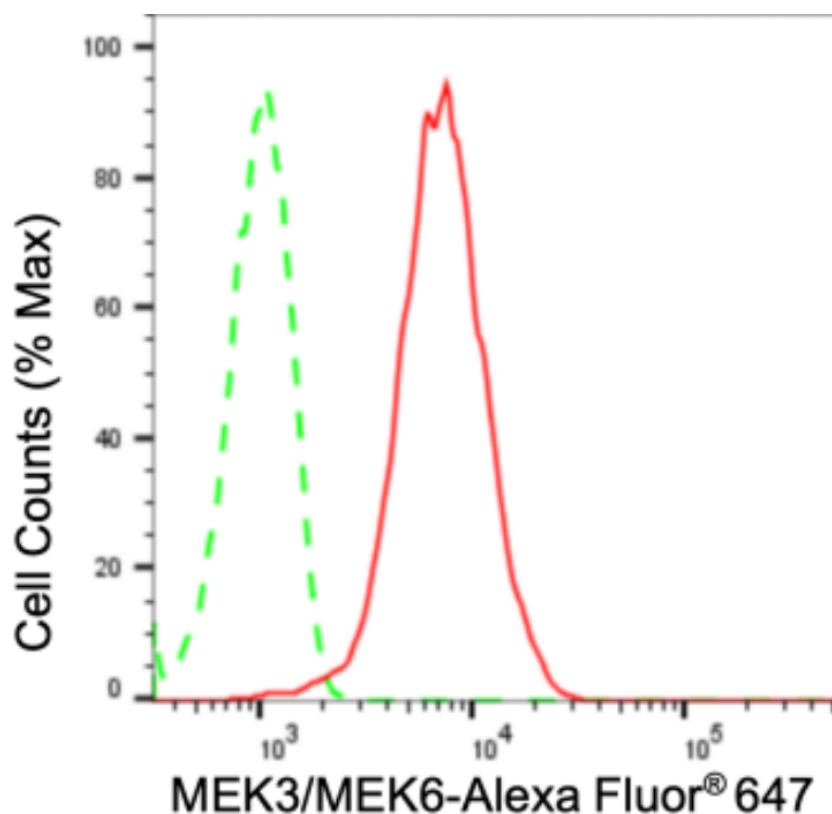
Western Blotting (WB): 1:1,000-1:5,000

Flow Cytometry (FCM): 1:2,000

Immunocytochemistry (IC): 1:100-1:1,000

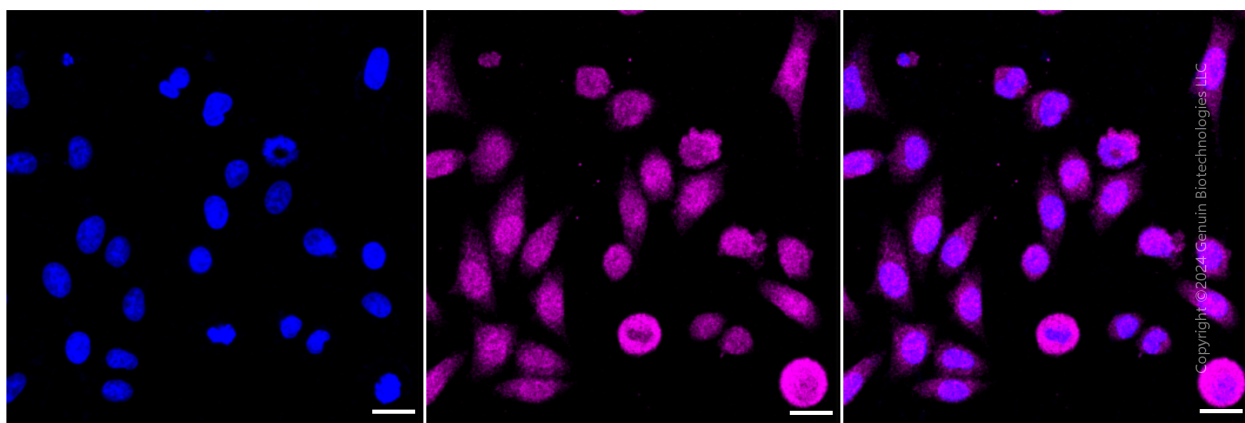
Note: This product is for research use only.

Validation Data



Copyright ©2024 Genuin Biotechnologies LLC

Flow cytometric analysis of MEK3/MEK6 expression in HepG2 cells using MEK3/MEK6 antibody (Cat#2325, 1:2,000). Green, isotype control; red, MEK3/MEK6.



Copyright ©2024 Genuin Biotechnologies LLC

Immunocytochemical staining of HepG2 cells with anti-MEK3/MEK6 antibody (Cat#2325,

SUPPORT

SUPPORT@GENUINBIOTECH.COM
TEL: +1-540-855-7041

ORDERS

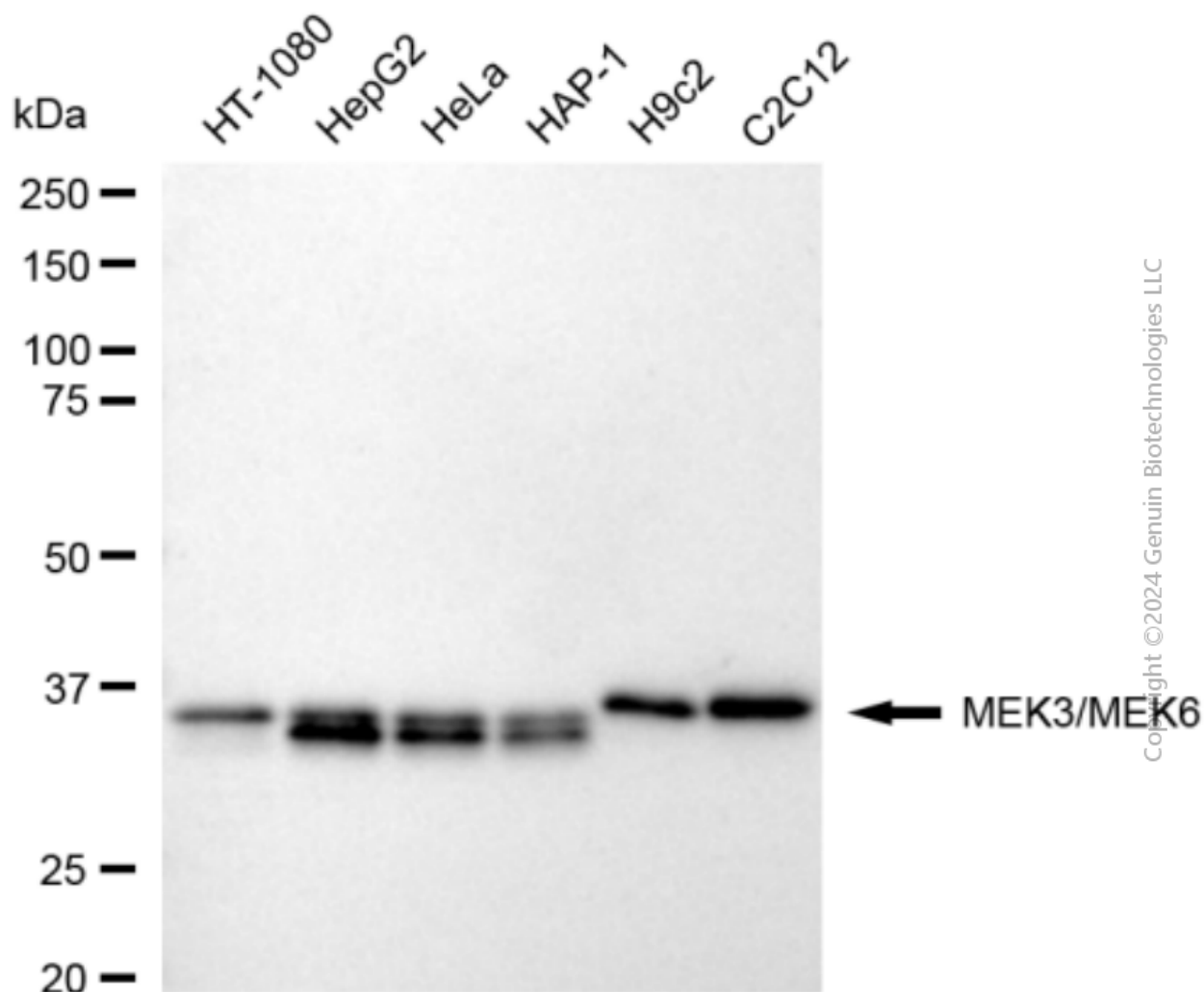
SALES@GENUINBIOTECH.COM
FAX: +1-540-855-7041

WWW.GENUINBIOTECH.COM

Anti-MAP2K3/ MAP2K6 Recombinant Rabbit Monoclonal Antibody

PAGE 3

1:1,000). Nuclei were stained blue with DAPI; MEK3/MEK6 was stained magenta with Alexa Fluor® 647. Images were taken using Leica stellaris 5. Protein abundance based on laser Intensity and smart gain: Medium. Scale bar: 20 μ m.



Western blotting analysis using anti-MEK3/MEK6 antibody (Cat#2325). Total cell lysates (30 μ g) from various cell lines were loaded and separated by SDS-PAGE. The blot was incubated with anti-MEK3/MEK6 antibody (Cat#2325, 1:5,000) and HRP-conjugated goat anti-rabbit secondary antibody (Cat#201, 1:20,000) respectively. Image was developed using FeQ™ ECL Substrate Kit (Cat#226).

SUPPORT

SUPPORT@GENUINBIOTECH.COM
TEL: +1-540-855-7041

ORDERS

SALES@GENUINBIOTECH.COM
FAX: +1-540-855-7041

WWW.GENUINBIOTECH.COM