

Catalog #: 2336

Aliases

Nuclear Factor Of Activated T Cells 2; NFAT1; NFATp; Nuclear Factor Of Activated T-Cells, Cytoplasmic, Calcineurin-Dependent 2; Nuclear Factor Of Activated T-Cells, Cytoplasmic 2; NFAT Pre-Existing Subunit; NF-ATc2; NF-ATP; Nuclear Factor Of Activated T-Cells, Preexisting Component; NFAT Transcription Complex, Preexisting Component; Preexisting Nuclear Factor Of Activated T-Cells 2; Nuclear Factor Of Activated T-Cells 2; T Cell Transcription Factor NFAT1; T-Cell Transcription Factor NFAT1; NFATc2; NF-ATp; JCOSL; NFATP

Background

Gene Name: NFATC2

NCBI Gene Entry: [4773](#)

UniProt Entry: [Q13469](#)

Application Information

Molecular Weight: Predicted, 100 kDa; observed, 100 kDa

Clonality: Rabbit monoclonal antibody

Clone ID: 24GB360

Species Reactivity: Human, rat

Applications Tested: Western blotting (WB), flow cytometry (FCM), immunocytochemistry (IC)

Immunogen

A synthesized peptide derived from human NFAT1

Isotype

Rabbit IgG

Storage Buffer

Supplied in PBS (pH 7.4) containing 50% glycerol, and 0.02% sodium azide.

Storage

Store at -20 °C for one year.

Recommended Dilutions

Western Blotting (WB): 1:1,000-1:5,000

Flow Cytometry (FCM): 1:2,000

Immunocytochemistry (IC): 1:100-1:1,000

SUPPORT

SUPPORT@GENUINBIOTECH.COM
TEL: +1-540-855-7041

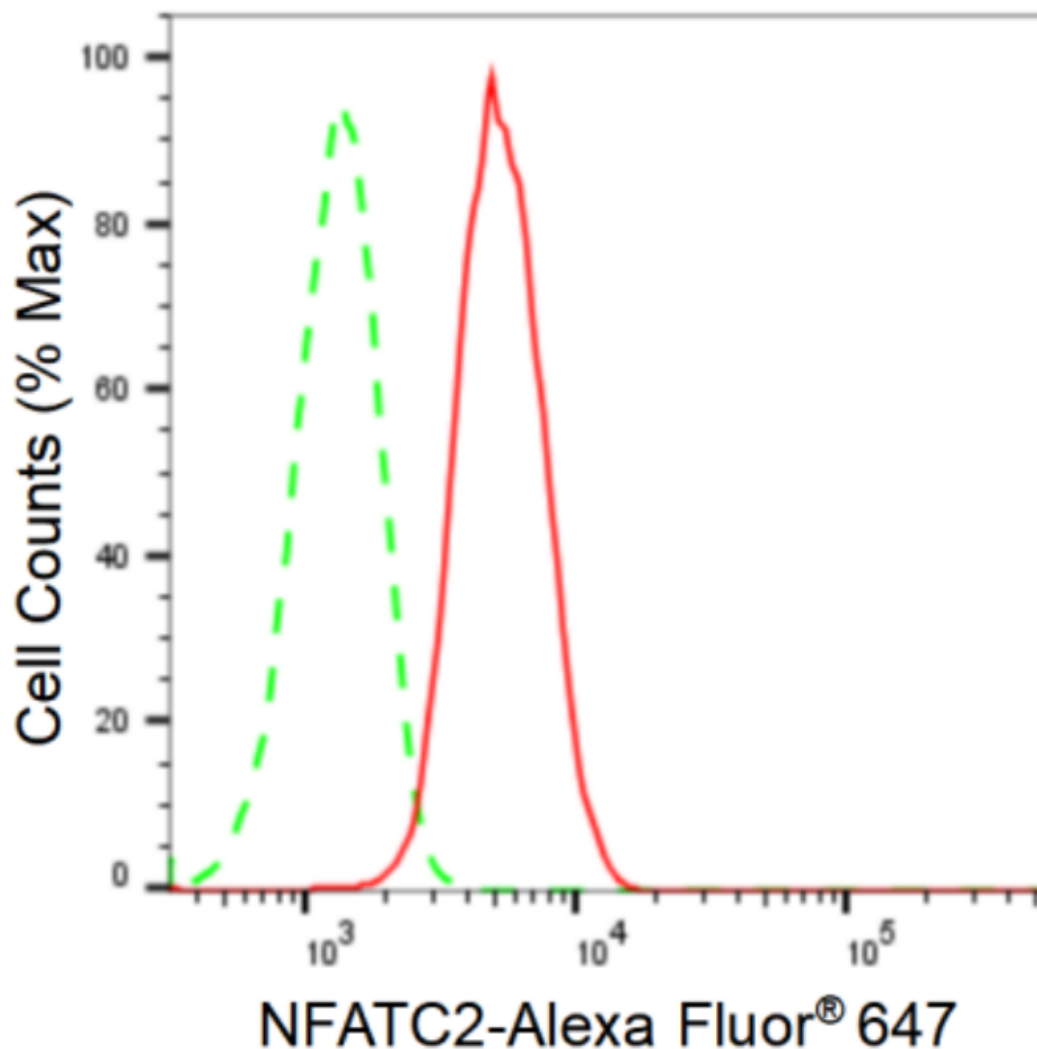
ORDERS

SALES@GENUINBIOTECH.COM
FAX: +1-540-855-7041

WWW.GENUINBIOTECH.COM

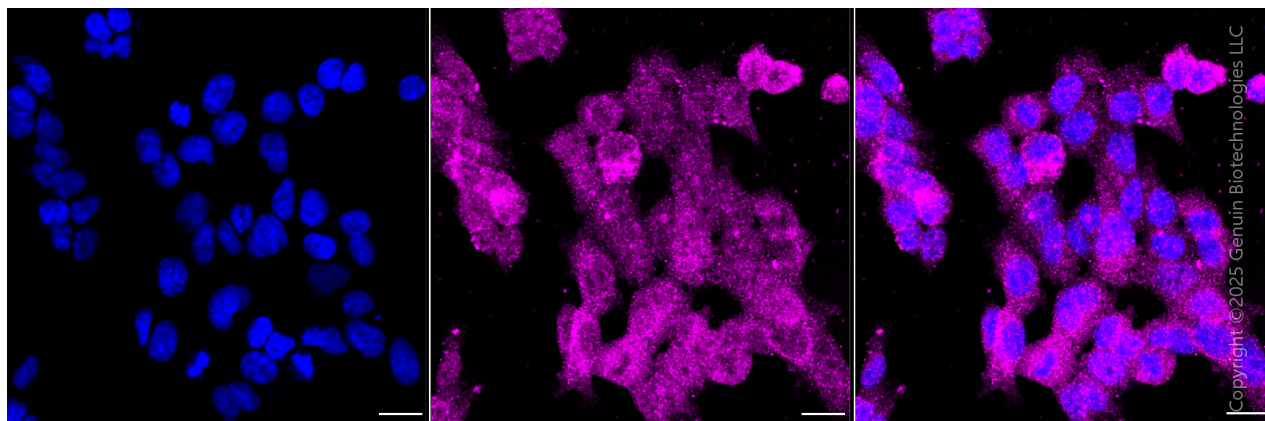
Note: This product is for research use only.

Validation Data

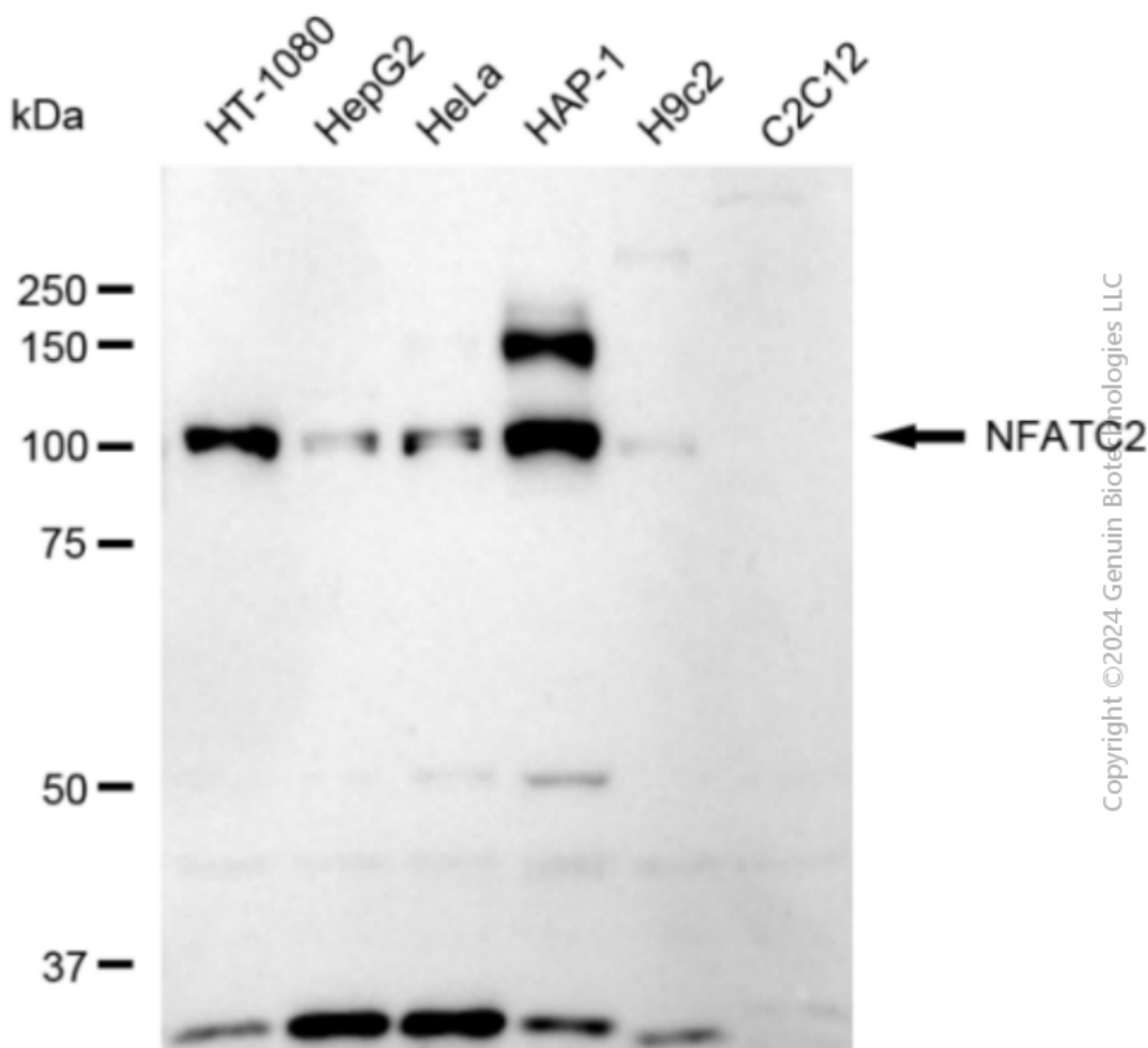


Copyright ©2024 Genuin Biotechnologies LLC

Flow cytometric analysis of NFATC2 expression in HAP-1 cells using anti-NFATC2 antibody (Cat#2336, 1:2,000). Green, isotype control; red, NFATC2.



Immunocytochemical staining of HAP1 cells with anti-NFATC2 antibody (Cat#2336, 1:1,000) . Nuclei were stained blue with DAPI; NFATC2 was stained magenta with Alexa Fluor® 647. Images were taken using Leica stellaris 5. Protein abundance based on laser Intensity and smart gain: Medium. Scale bar, 20 μ m.



Copyright ©2024 Genuin Biotechnologies LLC

Western blotting analysis using anti-NFATC2 antibody (Cat#2336). Total cell lysates (30 µg) from various cell lines were loaded and separated by SDS-PAGE. The blot was incubated with anti-NFATC2 antibody (Cat#2336, 1:5,000) and HRP-conjugated goat anti-rabbit secondary antibody (Cat#201, 1:20,000) respectively. Image was developed using FeQ™ ECL Substrate Kit (Cat#226).